

# Street Paving for Westport with Incidental SWS Improvements to serve **SILVERTON ADDITION - PHASE IV**

Westport from the west line of Lot 23, Block F, west to the west line of Kentucky Ln.  
 Kap from the south line of Westport, south to the south line of the plat  
 Kentucky Ln. from the north line of Westport north to the south line of Willoughby  
 Willoughby and Willoughby Cir. from the west line of the plat, east to and including the cul-de-sac  
 Kentucky Ct. from the east line of Kentucky Ln. east to and including the cul-de-sac

## CITY OF WICHITA, KANSAS

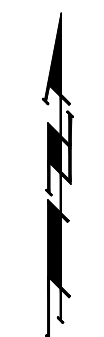
James L. Armour, P.E. City Engineer

Project Number

472-84462

O.C.A. Number

766254



Scale: 1" = 150'

### Benchmarks

135th St. W. & 13th St. N.  
 City of Wichita Disc adjacent to the  
 corner of intersection, 30.00± S. of  
 E of 13th St. N. 35.00± W. of E of  
 135th St. W.  
 Elev. = 1355.65 MSL (NGVD 29)

"□" Cut in top of curb north side  
 of Westport adjacent to the  
 southeast corner of Lot 30, Block D,  
 Silverton Addition.  
 Elev. = 1364.44 MSL (NGVD 29)

"□" Cut in curb inlet top at the  
 west end of Bellick Ct. adjacent to  
 Lot 10 & Lot 11, Block D, Silverton  
 Addition.  
 Elev. = 1364.12 MSL (NGVD 29)

### GENERAL NOTES:

- Contractor will be required to provide notice to utility companies a minimum of forty-eight (48) hours prior to any excavation, as follows:  

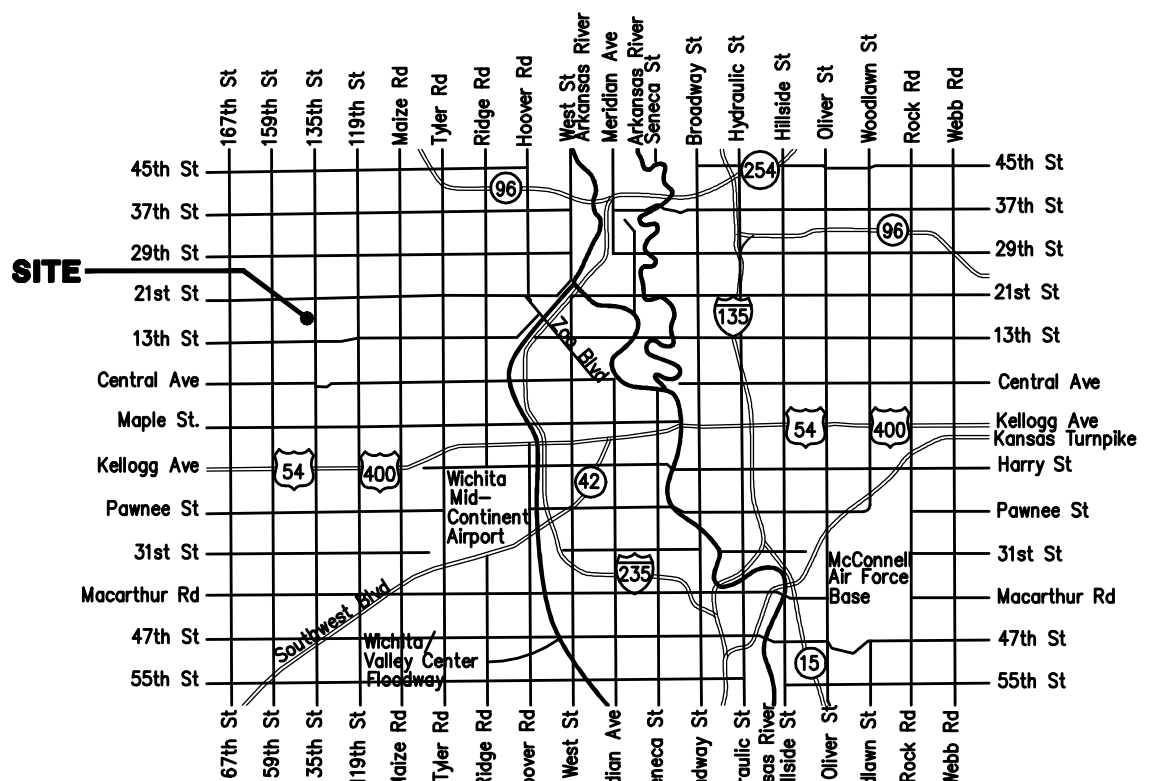
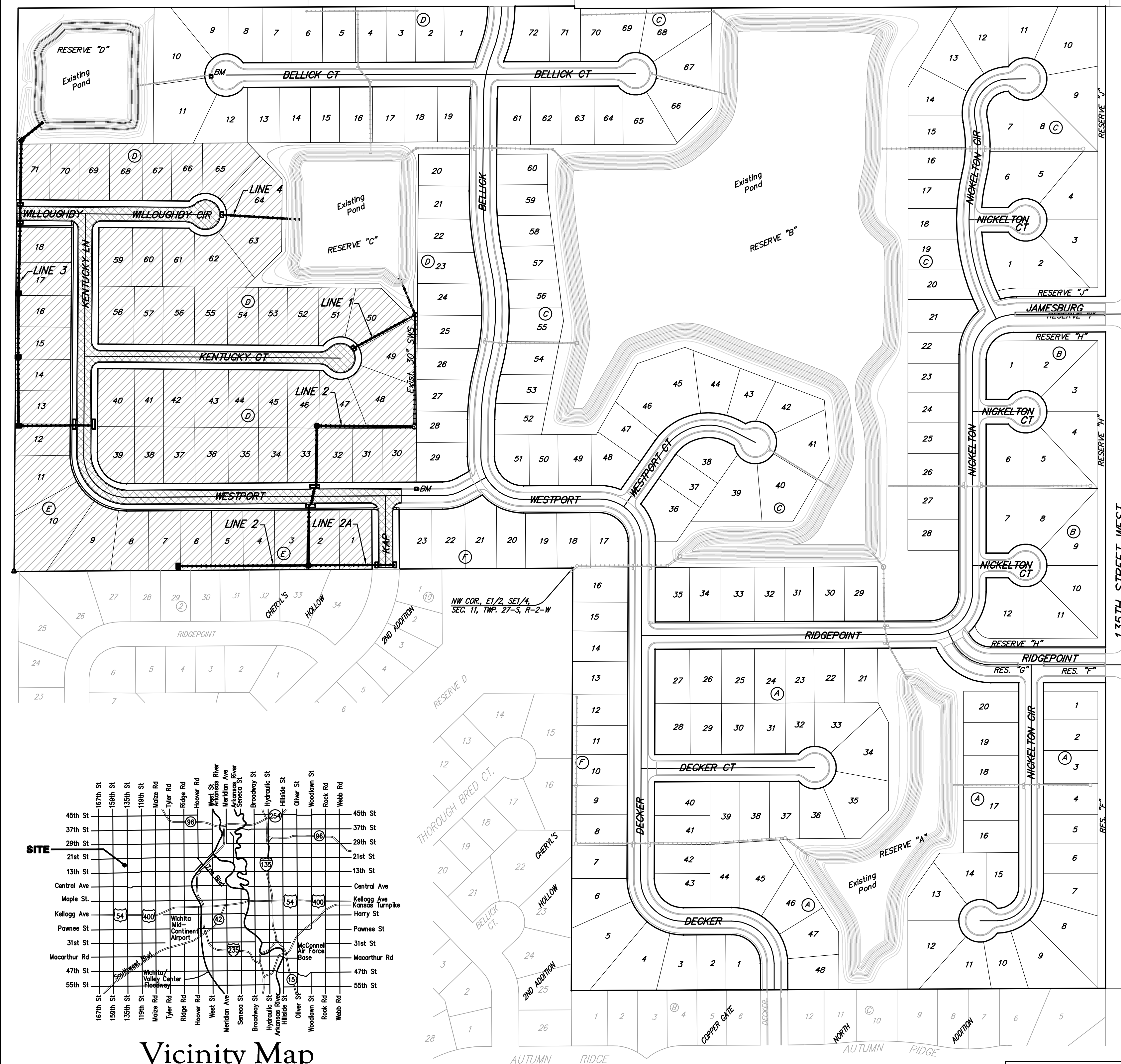
Kansas One-Call	687-2470
-----------------	----------

The Contractor must notify the following in case of an emergency:

Cox Communications	262-4270
Kansas Gas Service	1-888-482-4950
Westar Energy	383-8650
Aquila Energy	1-800-303-0357
AT&T	268-2245
City of Wichita Water Dept.	268-4563
City of Wichita Sewer Maint.	268-4024
City of Wichita Storm Sewer Maint.	268-4090
City of Wichita Traffic Maint.	268-4034
Conaco Phillips Pipeline Co.	1-877-267-2290
Southern Star Pipeline Co.	529-6600
Kinder-Morgan Pipeline Co.	1-888-844-5658
- Utility service lines, poles, valve boxes, meters, and etcetera are to be adjusted as necessary by others prior to construction unless the plans specifically call for their adjustment by the Contractor or unless the plans specifically identify a utility to be adjusted by its owner during construction. Existing utilities and their location, as shown on the plans, represent the best information obtainable for design. The Contractor will be required to work around existing utilities within the right-of-way which do not conflict with proposed construction.
- Rubble from the removal of miscellaneous structures and excess excavation which is to be wasted shall be disposed of on sites to be provided by the Contractor. These sites shall be approved by the Engineer as to suitability, appearance and site location. Locations, in the opinion of the Engineer, that will leave an unsightly appearance will not be approved. All disposal sites must be approved by the Kansas Department of Health and Environment. Material either stockpiled or disposed of in a flood plain would require a Kansas State Board of Agriculture permit. Any material dumped in waters of the United States or wetlands is subject to U.S. Corps. of Engineers permitting regulations. Any material buried or stockpiled beyond approved construction limits would require additional archaeological investigations unless buried in a previously approved borrow location.
- Trees and shrubs in public right-of-way which are in direct conflict with proposed new construction shall be removed by the Contractor with the Engineer's approval. Trees and shrubs which are not in direct conflict with proposed new construction shall be saved and protected from damage.
- The Contractor shall give all property owners and/or tenants of developed property abutting the construction of this project a minimum of ten (10) days notice prior to start of construction.
- The Contractor shall be responsible for preserving property irons. The Contractor will be required to re-establish any property irons which are damaged or destroyed by his construction operations. Such irons shall be re-established by a licensed land surveyor in accordance with state laws.
- All excess excavation shall remain on-site and shall be spread evenly on the lots outside of easements & R/W's
- All existing and proposed erosion control measures including silt fencing, erosion control mat, straw bales, inlet barriers, and const. entrance shall be maintained throughout construction by the contractor and until project is accepted by the City of Wichita. The on-site engineer shall complete weekly reports on the status of erosion control measures. The Contractor shall be required to comply with maintenance and/or replacement of erosion control measures as determined by the on-site Engineer until project is accepted by City of Wichita.
- All areas disturbed during construction shall be seeded at 300 lbs./acre with Rye Grass immediately following construction in that area. Contractor shall prepare ground per City Specifications.
- A sawcut of at least one-half the depth of existing surface courses or one-fourth the depth of the existing total pavement thickness shall be provided at locations where proposed construction abuts the existing surface course or pavement for which partial removal of that surface or pavement is required. Sawed joint to facilitate removal within three (3) feet of existing joints will not be permitted and for such instances the limits of removal shall extend to the existing joint. Such saw cuts will not be paid for directly and this cost shall be considered as subsidiary to the removal of the surface or pavement.
- The Contractor shall adjust valve boxes as necessary to match proposed grade. Cost to be included in bid item, "Site Restoration."
- Cross Sections reflect proposed grades after mass grading. Mass grading as-built topo was not available at time of street project finalization. Contractor of this project shall satisfy himself with the earthwork quantities as bid for "Excavation", "Compacted Fill", and "Easement Grading" prior to bidding. No additional payments or change orders for earthwork will be accepted.
- The developer for this project is Paul E. Kelsey and may be reached at (316) 722-1077

### Sheet Index

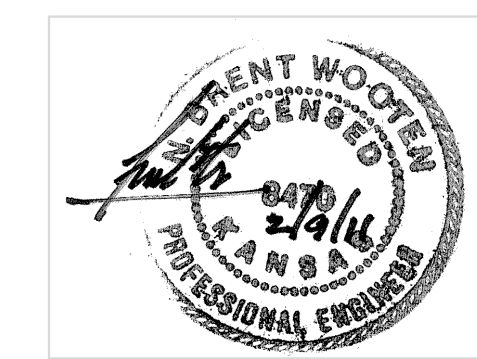
Title Sheet	1
35' Pavement Detail	2
29' Pavement Detail	3
Sign Detail	4
Miscellaneous Details	5
Westport/Kentucky Ln.	6-8
Willoughby/Willoughby Cir.	9
Kentucky Ct.	10-11
Kap	12
SWS Line 1	13
SWS Line 2 & Line 2A	14-16
SWS Line 3	17-18
SWS Line 4	19
Type 1A Inlet Detail	20
Curb Inlet Pavement Underdrain Detail	21
Precast Conc. Manhole Detail	22
Manhole/Inlet Frame & Cover Detail	23
Single/Double Drop Inlet Detail	24
Erosion Control/ESmt. Grading Plan	25
Erosion Control BMP Details	26-30
Coordinate Sheet	31-32
Earthwork Cross Sections	33-40
Copy of Plat	41-42



Vicinity Map

Benefit District   
 Proposed Streets 

EARTH WORK TOTALS (UNADJUSTED)			
	Excavation	Compacted Fill	Loose Fill
Street R/W's	2,053	126	34
Easement Grading (for information only)	217	-	1,030
<b>TOTAL PROJECT LENGTH</b>			
2,570 L.F. = 0.49 Miles			



**Baughman**  
 Baughman Company, P.A. 315 Ella St. Wichita, KS 67211 P 316-262-7271 F 316-262-0145  
 ENGINEERING | SURVEYING | PLANNING | LANDSCAPE ARCHITECTURE