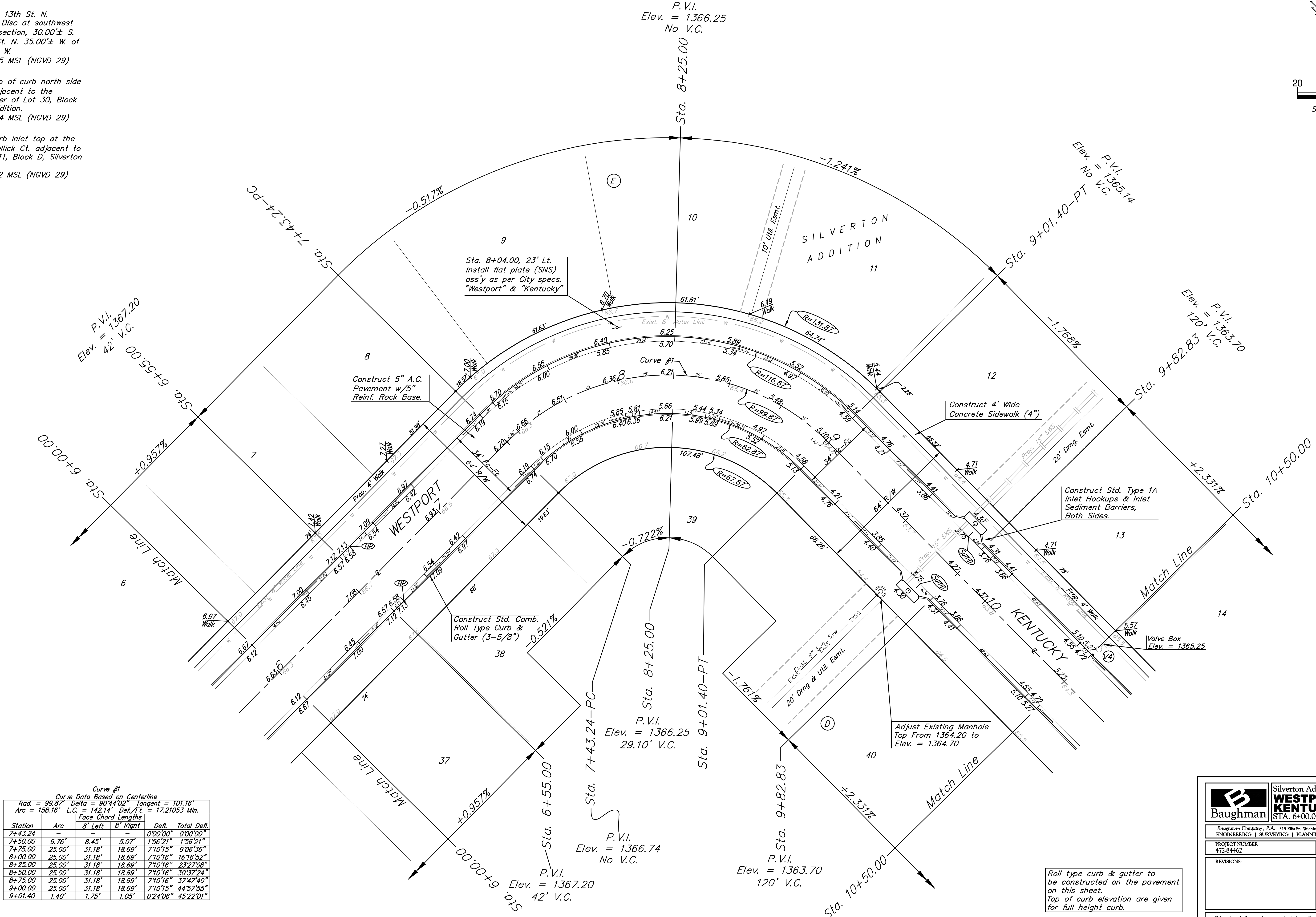
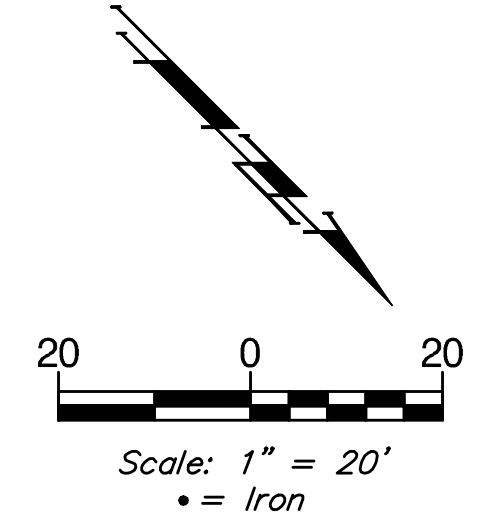


BENCHMARKS:
 135th St. W. & 13th St. N.
 City of Wichita Disc at southwest
 corner of intersection, 30.00± S.
 of C of 13th St. N. 35.00± W. of
 C of 135th St. W.
 Elev. = 1355.65 MSL (NGVD 29)

"□" Cut in top of curb north side
 of Westport adjacent to the
 southeast corner of Lot 30, Block
 D, Silverton Addition.
 Elev. = 1364.44 MSL (NGVD 29)

"□" Cut in curb inlet top at the
 west end of Bellick Ct. adjacent to
 Lot 10 & Lot 11, Block D, Silverton
 Addition.
 Elev. = 1364.12 MSL (NGVD 29)



Curve #1
 Curve Data Based on Centerline
 Rad. = 99.87' Delta = 90°44'02" Tangent = 101.16'
 Arc = 158.16' L.C. = 142.14' Def./Ft. = 17.21053 Min.

Station	Arc	Face Chord Lengths		Defl.	Total Defl.
		8' Left	8' Right		
7+43.24	-	-	-	00'00"	00'00"
7+50.00	6.76'	8.45'	5.07'	1'56"21"	1'56"21"
7+75.00	25.00'	31.18'	18.69'	7'10"15"	9'06"36"
8+00.00	25.00'	31.18'	18.69'	7'10"16"	16'16"52"
8+25.00	25.00'	31.18'	18.69'	7'10"16"	23'27"08"
8+50.00	25.00'	31.18'	18.69'	7'10"16"	30'37"24"
8+75.00	25.00'	31.18'	18.69'	7'10"16"	37'47"40"
9+00.00	25.00'	31.18'	18.69'	7'10"15"	44'57"55"
9+01.40	1.40'	1.75'	1.05'	0'24"06"	45'22"01"

Roll type curb & gutter to
 be constructed on the pavement
 on this sheet.
 Top of curb elevation are given
 for full height curb.

		Silverton Addition - Phase 4 WESTPORT & KENTUCKY LN. STA. 6+00.00 TO STA. 10+50.00	
		Baughman Company, P.A. 315 Ellis St. Wichita, KS 67211 P 316-262-7771 F 316-262-0149 ENGINEERING SURVEYING PLANNING LANDSCAPE ARCHITECTURE	
PROJECT NUMBER 47284462	DESIGN JAK APPROVED NBW	DRAWN GRF/TMS DATE 2/07/11	REVISIONS:
SCALE Noted SHEET		7 OF 42	