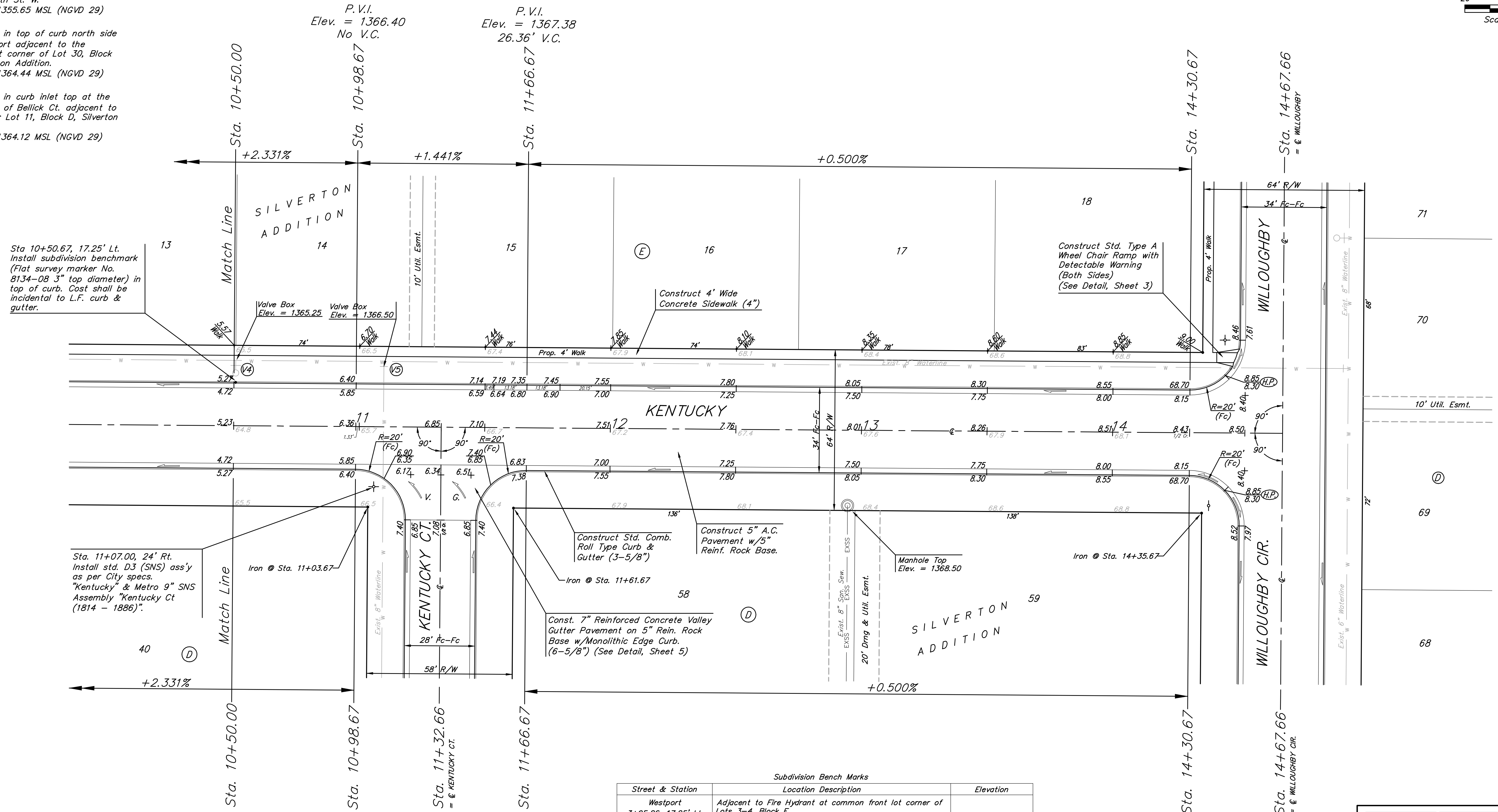
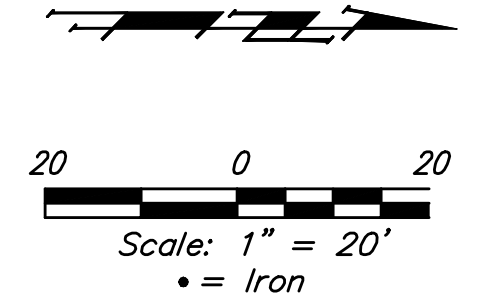


BENCHMARKS:
 135th St. W. & 13th St. N.
 City of Wichita Disc at southwest
 corner of intersection, 30.00± S.
 of C of 13th St. N. 35.00± W. of
 C of 135th St. W.
 Elev. = 1355.65 MSL (NGVD 29)

"□" Cut in top of curb north side
 of Westport adjacent to the
 southeast corner of Lot 30, Block
 D, Silverton Addition.
 Elev. = 1364.44 MSL (NGVD 29)

"□" Cut in curb inlet top at the
 west end of Bellick Ct. adjacent to
 Lot 10 & Lot 11, Block D, Silverton
 Addition.
 Elev. = 1364.12 MSL (NGVD 29)



Subdivision Bench Marks		
Street & Station	Location Description	Elevation
Westport 3+95.26, 17.25' Lt.	Adjacent to Fire Hydrant at common front lot corner of Lots 3-4, Block E.	
Kentucky Lane 10+50.67, 17.25' Lt.	Adjacent to Fire Hydrant at common front lot corner of Lots 13-14, Block E.	
Willoughby 1+52.17, 17.25' Lt.	Adjacent to Fire Hydrant at common front lot corner of Lots 69-70, Block D.	
Kentucky Ct. 4+78.68, 14.25' Rt.	Adjacent to Fire Hydrant at common front lot corner of Lots 45-46, Block D.	

Roll type curb & gutter to be constructed on the pavement on this sheet.
 Top of curb elevation are given for full height curb.

Baughman Engineering & Surveying | Planning | Landscape Architecture

Silverton Addition - Phase 4
KENTUCKY LN.
 STA. 10+50.00 TO STA. 14+67.67

PROJECT NUMBER: 47284462
 DESIGN: JAK
 DRAWN: GRF/TMS
 APPROVED: NBW
 DATE: 2/07/11
 SCALE: Noted
 SHEET: 8 OF 42

REVISIONS: