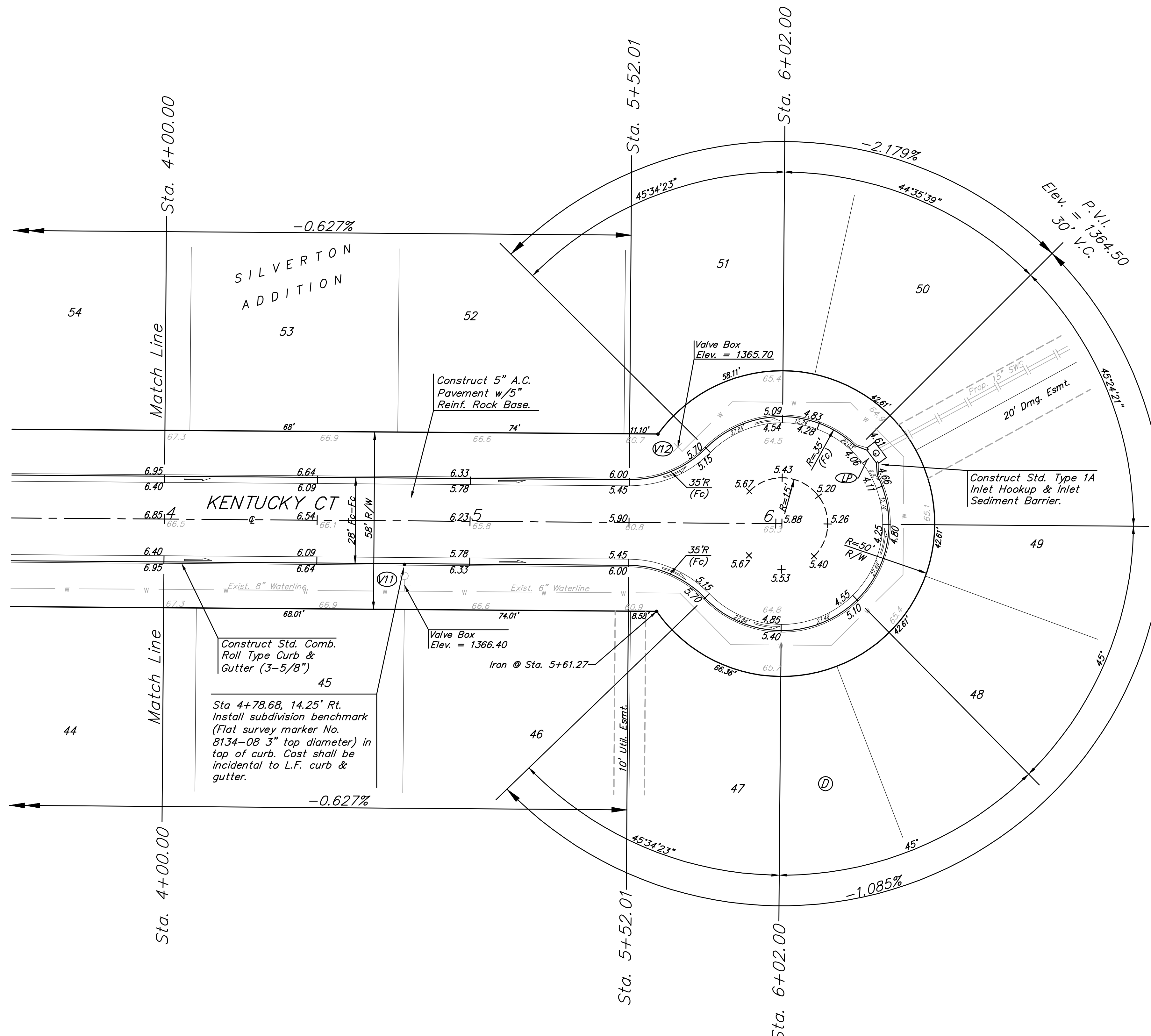
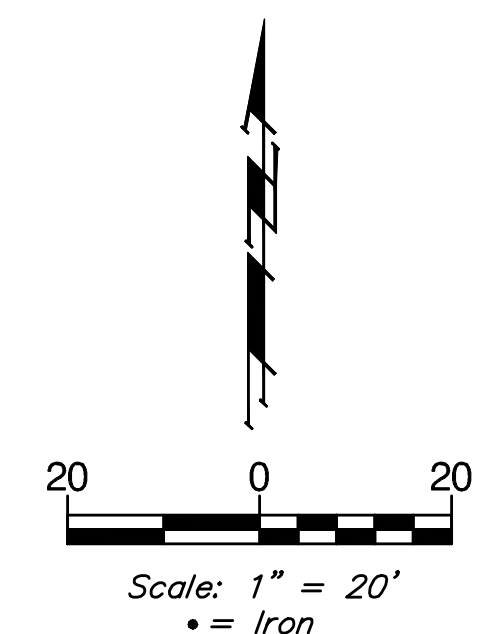


BENCHMARKS:
 135th St. W. & 13th St. N.
 City of Wichita Disc at southwest
 corner of intersection, 30.00± S.
 of C of 13th St. N. 35.00± W. of
 C of 135th St. W.
 Elev. = 1355.65 MSL (NGVD 29)

"□" Cut in top of curb north side
 of Westport adjacent to the
 southeast corner of Lot 30, Block
 D, Silverton Addition.
 Elev. = 1364.44 MSL (NGVD 29)

"□" Cut in curb inlet top at the
 west end of Bellick Ct. adjacent to
 Lot 10 & Lot 11, Block D, Silverton
 Addition.
 Elev. = 1364.12 MSL (NGVD 29)



Construct Std. Comb.
 Roll Type Curb &
 Gutter (3-5/8")

Sta 4+78.68, 14.25' Rt.
 Install subdivision benchmark
 (Flat survey marker No.
 8134-08 3" top diameter)
 in top of curb. Cost shall be
 incidental to L.F. curb &
 gutter.

Valve Box
 Elev. = 1366.40

Iron @ Sta. 5+61.27

Construct 5" A.C.
 Pavement w/5"
 Reinf. Rock Base.

Construct Std. Type 1A
 Inlet Hookup & Inlet
 Sediment Barrier.

Roll type curb & gutter to
 be constructed on the pavement
 on this sheet.
 Top of curb elevation are given
 for full height curb.

	Silverton Addition - Phase 4 KENTUCKY CT STA. 4+00.00 TO STA. 6+02.00	
	<small>Baughman Company, P.A. 315 Ellis St. Wichita, KS 67211 P 316343-7771 F 3162634149 ENGINEERING SURVEYING PLANNING LANDSCAPE ARCHITECTURE</small>	
PROJECT NUMBER 47284462	DESIGN JAK	DRAWN GRF/TMS
REVISIONS:	APPROVED NBW	DATE 2/07/11
SCALE Noted		SHEET 11 OF 42