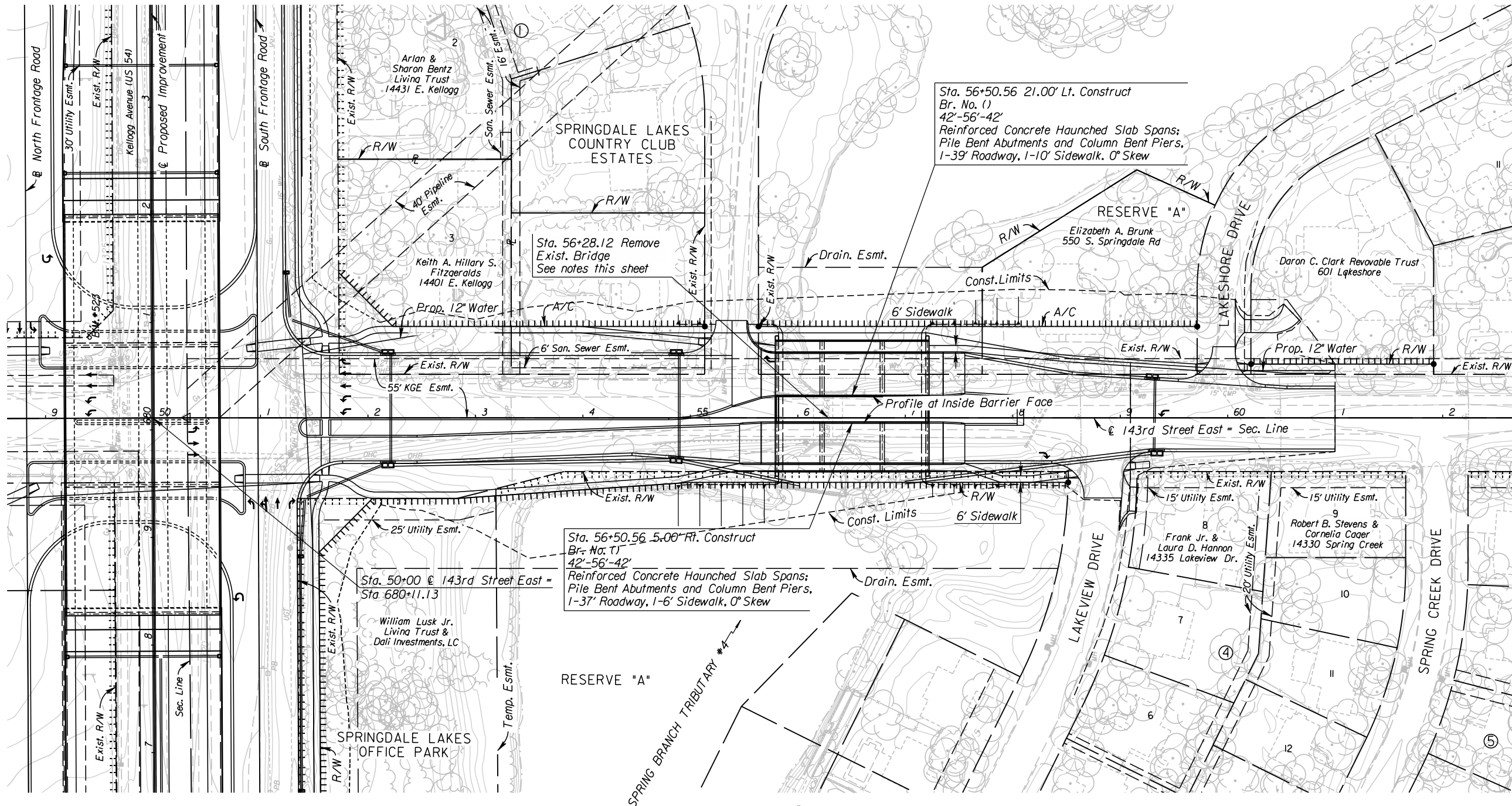
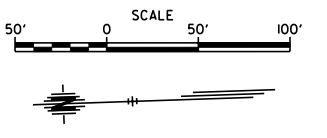
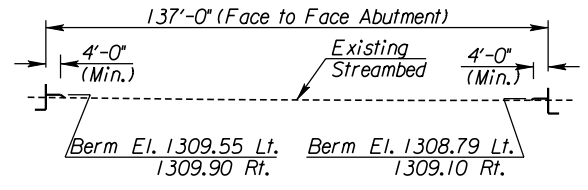


STATE	PROJECT NO.	YEAR	SHEET NO.	TOTAL SHEETS
KANSAS	472 84614	.	209	534

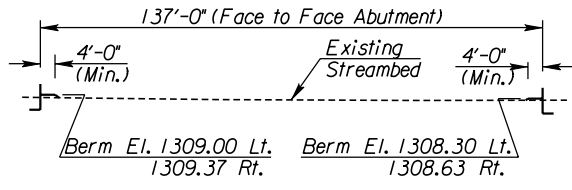


REMOVAL OF EXISTING STRUCTURE
 The Contractor shall remove the existing bridge (K.D.O.T. No. XXXXX) consisting of 3-9'x6' RCB. All material removed shall become the property of the Contractor and shall be removed from the project site by the Contractor. Remove all portions of the substructure (pilings, footings, etc.) at least 3' below the existing streambed. All labor and work is included in the bid item "Removal of Existing Structures", Lump Sum.

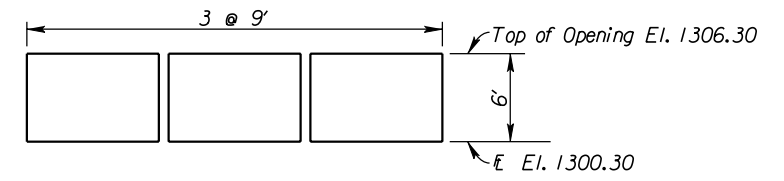
- UTILITIES**
- Cable
 - Gas₁
 - Gas₂
 - Gas₅
 - Power
 - Sanitary Sewer
 - Storm Water Sewer
 - Telephone
 - Traffic Signal
 - Water
 - Cox Communications
 - Kansas Gas Service
 - Southern Star Pipeline
 - Coffeyville Resources
 - Westar
 - Wichita Water & Sewer
 - Wichita Water & Sewer
 - AT&T
 - City of Wichita
 - Wichita Water & Sewer



CHANNEL SECTION @ SB 143RD ST. SOUTH BRIDGE
 (Looking Downstream) (Along @ 143rd St.)



CHANNEL SECTION @ NB 143RD ST. SOUTH BRIDGE
 (Looking Downstream) (Along @ 143rd St.)



EXISTING R.C.B. WATERWAY OPENING
 (Looking Downstream) (Normal to @ Channel)
 Waterway Opening = 690 Sq. Ft.

See Sh. No's. 102-130 for SWS Plans.
 See Sh. No's. 136-139 for San. Sewer Plans.
 See Sh. No's. 140-162 for Water Plans.

CITY OF WICHITA
 SB & NB 143RD STREET EAST OVER
 SPRING BRANCH TRIBUTARY #4
 CONTOUR MAP
 BR. NO. STA. 56+50.56
 BR. NO. STA. 56+50.56

1/17/20 AM
 2/21/2011
 T:\357666\Cadd\Sheets\Structures\Bridges\143S\EK243SC.TM.dgn
 SURV. - PLOT CADD DES. - DR. - TR. - APP. - CKD.