

STATE	PROJECT NO.	YEAR	SHEET NO.	TOTAL SHEETS
KANSAS	472 84614	:	25	534

Raymond Oil Company, Inc

Sta. 734+51.76, 62.54' Lt. Begin  
MSE Retaining Wall P Begin  
MSE Retaining Wall Q  
See Sh. No's. 177 & 178

Sta. 734+58.26, 61.25' Lt. Begin  
Concrete Safety Barrier Type II (Special)  
See Sh. No's.

Sta. 734+58.26 Begin  
Concrete Safety Barrier Type IV (Special)  
See Sh. No's.

Temp. Esmt.=30' Private Utility Esmt.

Prop. 16" Water

Prop. 10" San. Sewer

2735 Exist. R/W

MSE Retaining Wall Q

Concrete Safety Barrier Type II (Special)

Sec. Line

Concrete Safety Barrier Type IV (Special)

Concrete Safety Barrier Type II (Special)

MSE Retaining Wall R

South Frontage Road

Prop. 16" Water

R/W

Temp. Esmt.

Sta. 734+58.26, 61.25' Rt. Begin  
Concrete Safety Barrier Type II (Special)  
See Sh. No's.

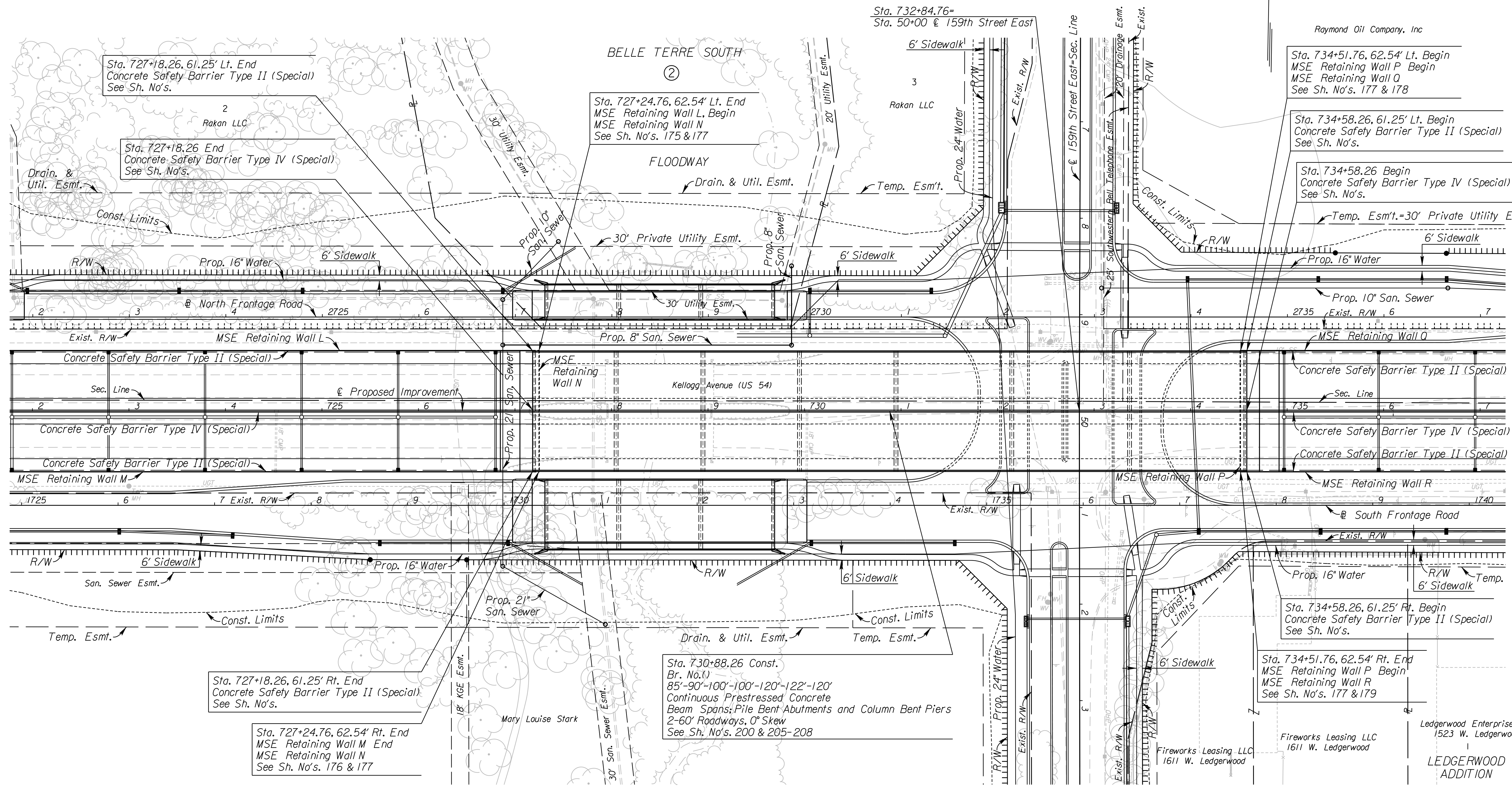
Sta. 734+51.76, 62.54' Rt. End  
MSE Retaining Wall P Begin  
MSE Retaining Wall R  
See Sh. No's. 177 & 179

Fireworks Leasing LLC  
1611 W. Ledgerwood

Ledgerwood Enterprises Inc  
1523 W. Ledgerwood

See Sh. No's. 102-130 for SWS Plans.  
See Sh. No's. 136-139 for San. Sewer Plans.  
See Sh. No's. 140-162 for Water Plans.

CITY OF WICHITA  
EAST KELLOGG  
PLAN  
STA. 722+00 TO STA. 737+00



BELLE TERRE SOUTH

②

Sta. 727+24.76, 62.54' Lt. End  
MSE Retaining Wall L, Begin  
MSE Retaining Wall N  
See Sh. No's. 175 & 177

FLOODWAY

Drain. & Util. Esmt.

Temp. Esmt.

30' Private Utility Esmt.

6' Sidewalk

30' Utility Esmt.

Prop. 8" San. Sewer

MSE Retaining Wall N

Kellogg Avenue (US 54)

730

735

730

735

730

735

730

735

730

735

730

735

730

735

730

735

730

Sta. 730+88.26 Const.  
Br. No. ( )  
85'-90'-100'-100'-120'-122'-120'  
Continuous Prestressed Concrete  
Beam Spans; Pile Bent Abutments and Column Bent Piers  
2-60' Roadways, 0° Skew  
See Sh. No's. 200 & 205-208

Sta. 727+18.26, 61.25' Rt. End  
Concrete Safety Barrier Type II (Special)  
See Sh. No's.

Sta. 727+24.76, 62.54' Rt. End  
MSE Retaining Wall M End  
MSE Retaining Wall N  
See Sh. No's. 176 & 177

- UTILITIES
- Cable
  - Gas
  - Power
  - Sanitary Sewer
  - Storm Water Sewer
  - Telephone
  - Traffic Signal
  - Water
  - Cox Communications
  - Kansas Gas Service
  - Westar
  - Wichita Water & Sewer
  - Wichita Water & Sewer
  - AT&T
  - City of Wichita
  - Wichita Water & Sewer

I:\02+55 AM  
 2/25/2011  
 T:\35766A\Cadd\Sheets\Roadway\EK2ML\PLN08.dgn  
 SURV. PLOT CADD DES. TR. CKD. APP.