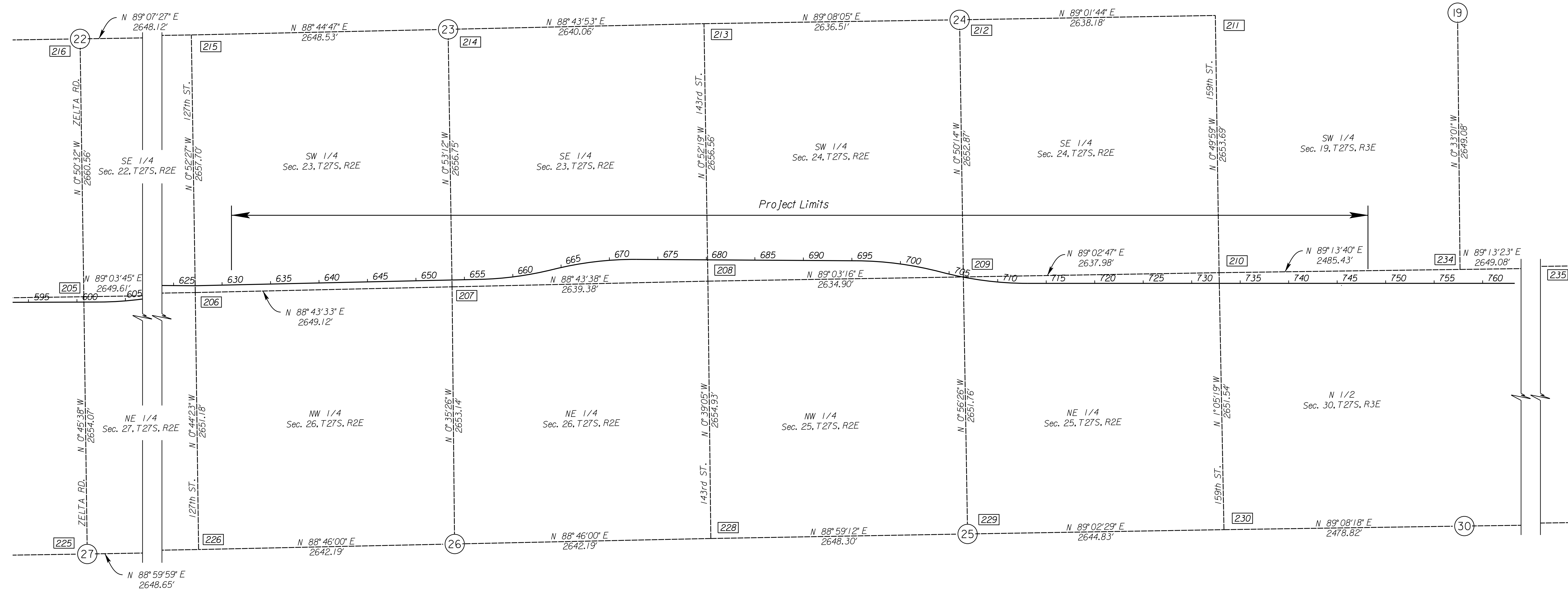
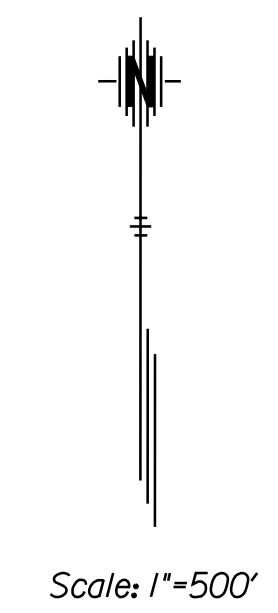


STATE	PROJECT NO.	YEAR	SHEET NO.	TOTAL SHEETS
KANSAS	472 84614	:	75	534

SEC/COR NO.	QUARTER CORNER LOCATION	COORDINATES		CORNER DESCRIPTION	STATION	OFFSET (FT)	ANGLE	TIE	DISTANCE (FT)	DIRECTION	TIE DESCRIPTION
		NORTHING	EASTING								
230	W 1/4 Cor. Sec. 30, T27S, R3E	1681478.9457	1702372.0728	Metal Capped Rebar	732+84.76 159th St. 76+41.32	2641.32 Rt. 0.00 Lt.	89°55'49" SE	R1	--	W	Line of tree line and fence
								R2	36.70	WNW	Nail in top of fence post
								R3	70.15	SSW	Nail in top of fence post
								R4	68.40	SE	Nail in cap in top of fence post
								R5	5.00	E	East edge of pavement
234	S 1/4 Cor. Sec. 19, T27S, R3E	1684163.4968	1704806.9027	Chiseled Cross on Concrete Paving	757+70.16	0.48 Rt.	90°28'06" SE	R1	--	S	Line of tree line
								R2	104.30	S	Nail and washer in light pole
								R3	108.05	NE	Chiseled cross cut on median curb
								R4	144.50	SW	Street sign post
								R5	90.60	NW	PK nail in high line pole
235	SW Cor. Sec. 20, T27S, R3E	1684199.4228	1707455.7424	*5 Rebar Garber Cap in Casing							



Note: Distances shown are from Section Corner to Section Corner.

CITY OF WICHITA
SECTION CORNERS

11:28:46 AM
2/9/2011
T:\35766A\Cadd\Sheets\General\K2SECCOR02.dgn
SURV. PLOT CADD DES. TR. CKD. APP.