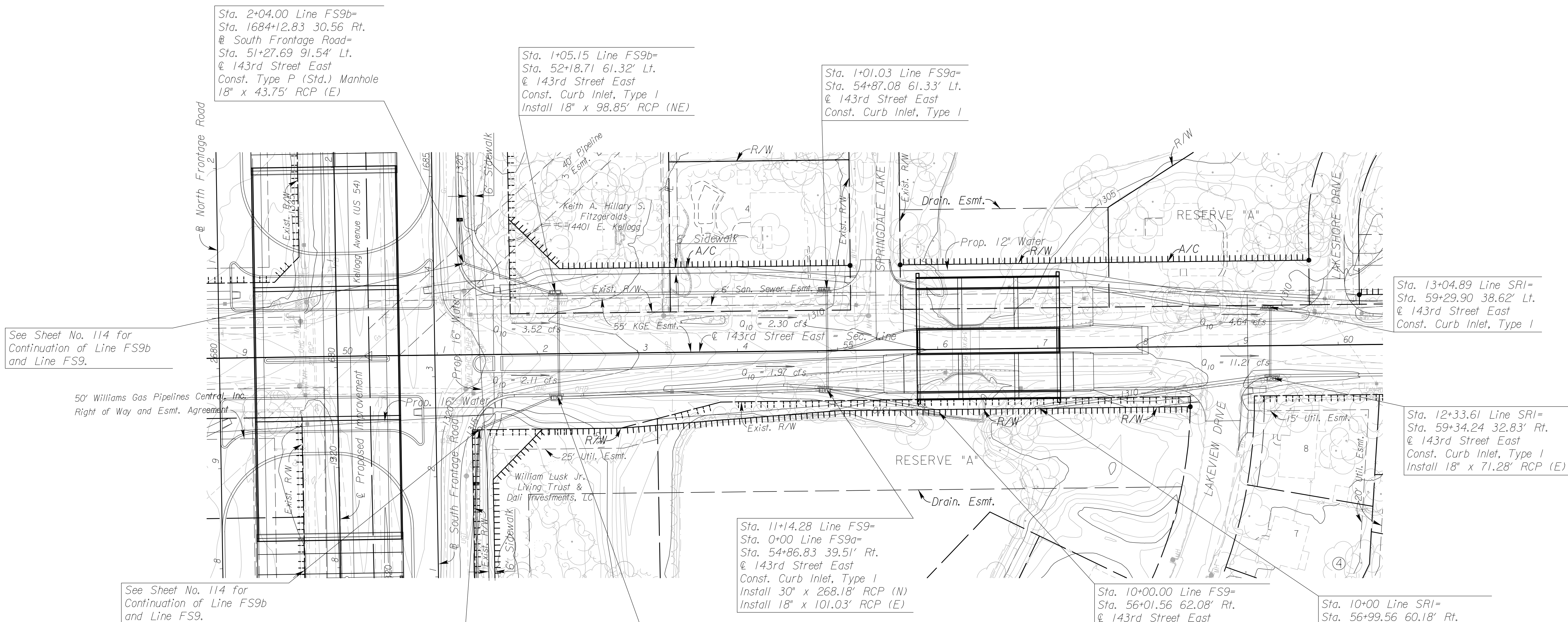
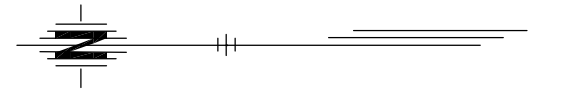


STATE	PROJECT NO.	YEAR	SHEET NO.	TOTAL SHEETS
KANSAS	472 84614	.	128	534



Sta. 2+04.00 Line FS9b=  
Sta. 1684+12.83 30.56 Rt.  
@ South Frontage Road=  
Sta. 51+27.69 91.54' Lt.  
@ 143rd Street East  
Const. Type P (Std.) Manhole  
18" x 43.75' RCP (E)

Sta. 1+05.15 Line FS9b=  
Sta. 52+18.71 61.32' Lt.  
@ 143rd Street East  
Const. Curb Inlet, Type 1  
Install 18" x 98.85' RCP (NE)

Sta. 1+01.03 Line FS9a=  
Sta. 54+87.08 61.33' Lt.  
@ 143rd Street East  
Const. Curb Inlet, Type 1

See Sheet No. 114 for  
Continuation of Line FS9b  
and Line FS9.

Sta. 13+04.89 Line SRI=  
Sta. 59+29.90 38.62' Lt.  
@ 143rd Street East  
Const. Curb Inlet, Type 1

Sta. 12+33.61 Line SRI=  
Sta. 59+34.24 32.83' Rt.  
@ 143rd Street East  
Const. Curb Inlet, Type 1  
Install 18" x 71.28' RCP (E)

50' Williams Gas Pipelines Central, Inc.  
Right of Way and Esmt. Agreement

See Sheet No. 114 for  
Continuation of Line FS9b  
and Line FS9.

Sta. 11+14.28 Line FS9=  
Sta. 0+00 Line FS9a=  
Sta. 54+86.83 39.51' Rt.  
@ 143rd Street East  
Const. Curb Inlet, Type 1  
Install 30" x 268.18' RCP (N)  
Install 18" x 101.03' RCP (E)

Sta. 10+00.00 Line FS9=  
Sta. 56+01.56 62.08' Rt.  
@ 143rd Street East  
Const. 30" Headwall  
Install 30" x 114.28' RCP (NE)

Sta. 10+00 Line SRI=  
Sta. 56+99.56 60.18' Rt.  
@ 143rd Street East  
Const. 30" Headwall  
Install 30" x 233.62' RCP (S)

Sta. 14+82.09 Line FS9=  
Sta. 14+68.41 Line FS9=  
Sta. 1682+47.21 43.53' Rt.  
@ South Frontage Road=  
Sta. 51+41.52 74.10' Rt.  
@ 143rd Street East  
Type P (Std.) Manhole  
18" x 54.95' RCP (W)

Sta. 13+82.46 Line FS9=  
Sta. 0+00 Line FS9b=  
Sta. 52+18.71 43.82' Rt.  
@ 143rd Street East  
Const. Curb Inlet, Type 1  
Install 18" x 85.95' RCP (NW)  
Install 18" x 105.15' RCP (E)

- UTILITIES**
- Cable Cox Communications
  - Gas1 Kansas Gas Service
  - Gas2 Southern Star Pipeline
  - Gas3 Coffeyville Resources
  - Power Westar
  - Sanitary Sewer Wichita Water & Sewer
  - Storm Water Sewer Wichita Water & Sewer
  - Telephone AT&T
  - Traffic Signal City of Wichita
  - Water Wichita Water & Sewer

$Q_{10} = x.xx$  cfs - DESIGN YEAR FLOW PER INLET  
See Sh. No's. 136-139 for San. Sewer Plans.  
See Sh. No's. 140-162 for Water Plans.

**CITY OF WICHITA**  
**143RD STREET EAST**  
**STORM WATER SEWER PLAN**  
**STA. 50+00 TO STA. 60+00**

2:45 PM  
 2/18/2011  
 J:\CIVIL\07432\DWG\SWSEK2\ML\_PLAN\K243SWPL02.DWG  
 SURV. - PLOT CADD DES. - DR. - TR. - CKD. - APP.