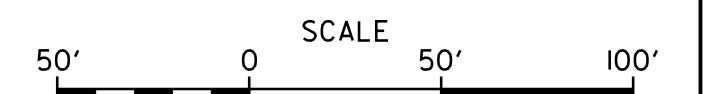


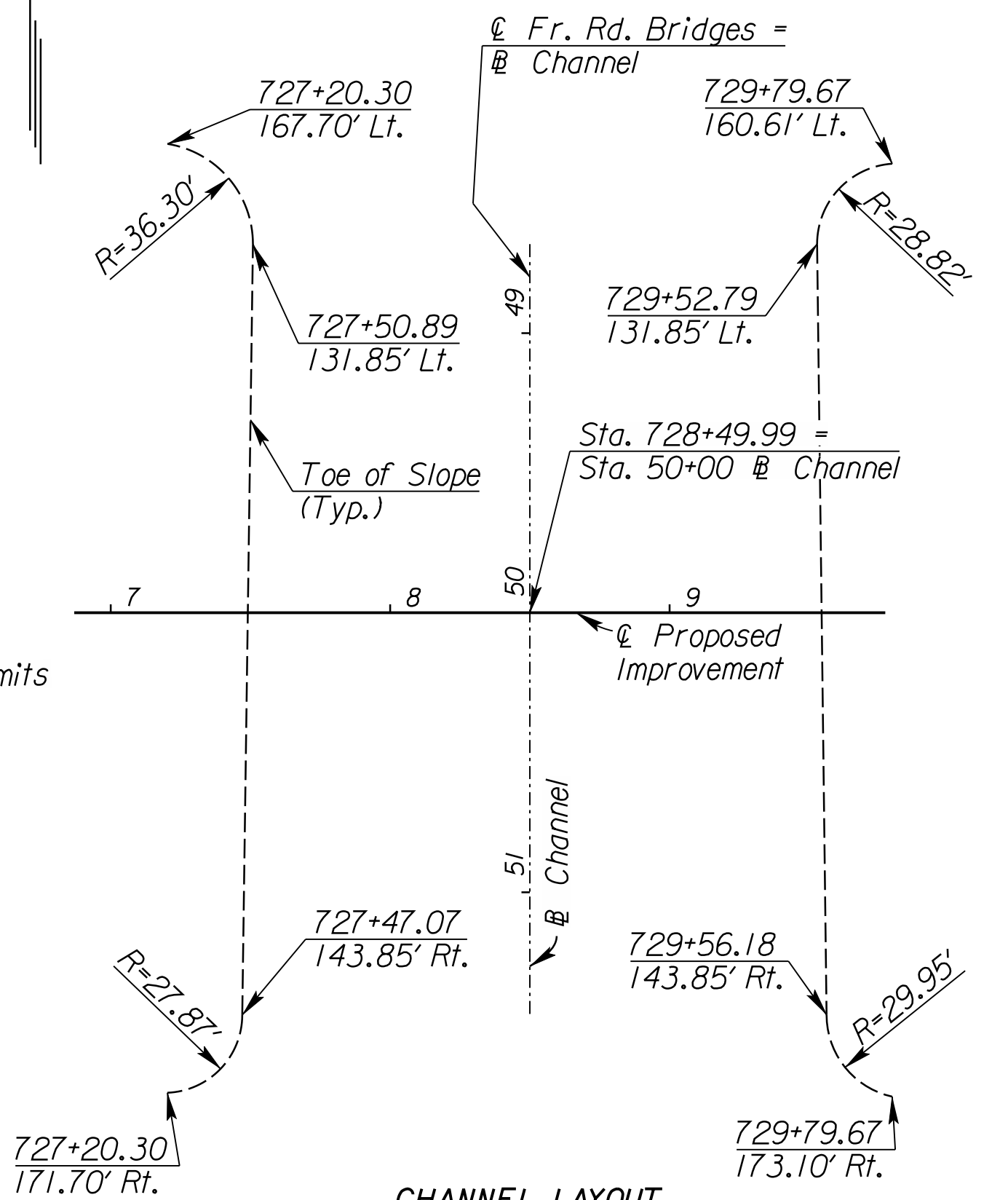
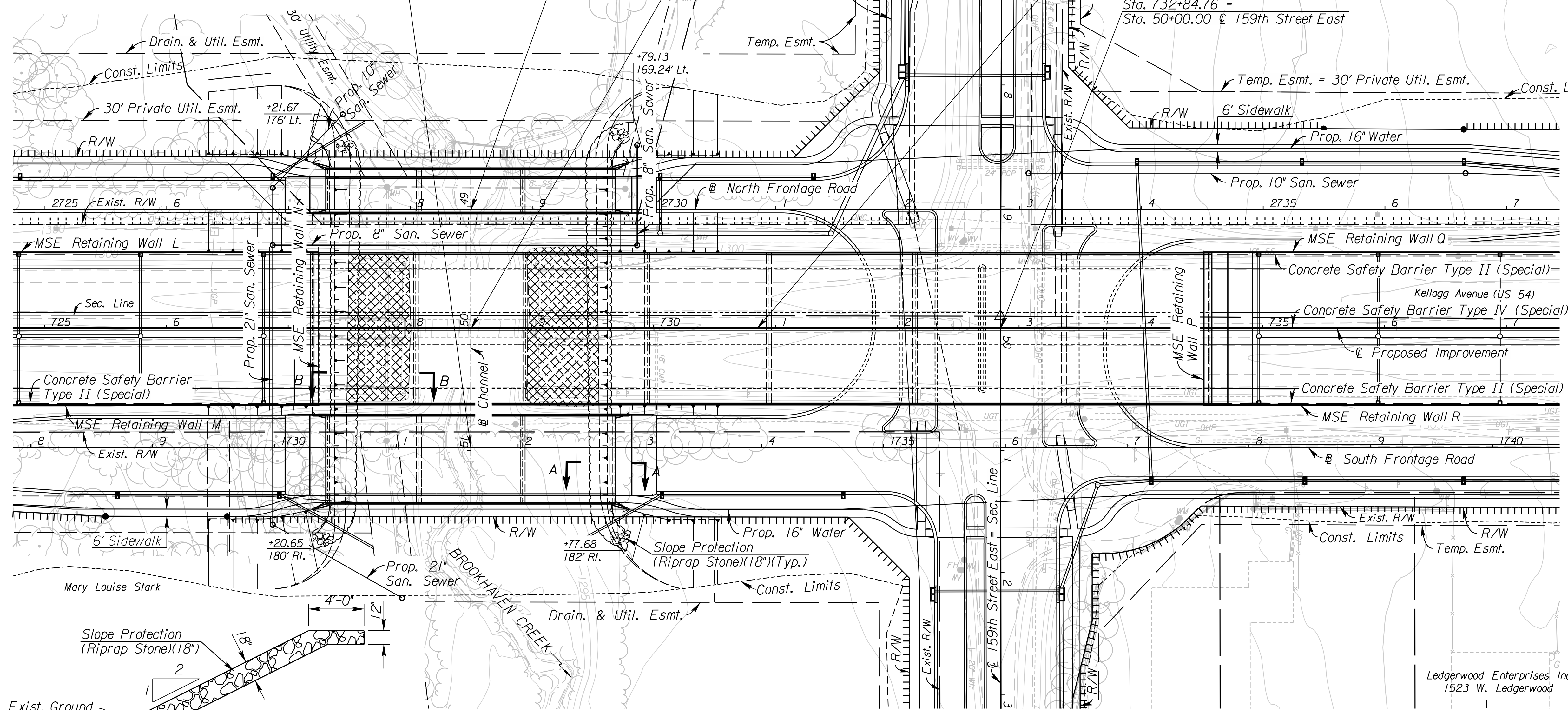
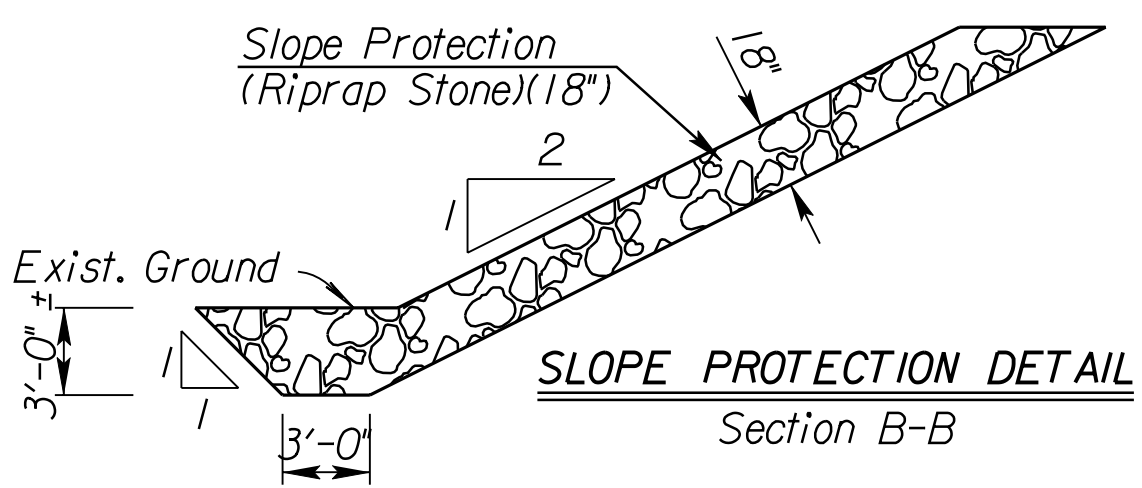
STATE	PROJECT NO.	YEAR	SHEET NO.	TOTAL SHEETS
KANSAS	472 84614	.	200	534



Sta. 1731+61.25 Construct
Br. No. (1)
75'-85'-75'
Continuous Prestressed Concrete Beam Spans;
Pile Bent Abutments and Column Bent Piers,
1-64' Roadway, 1-6' Sidewalk, 0° Skew

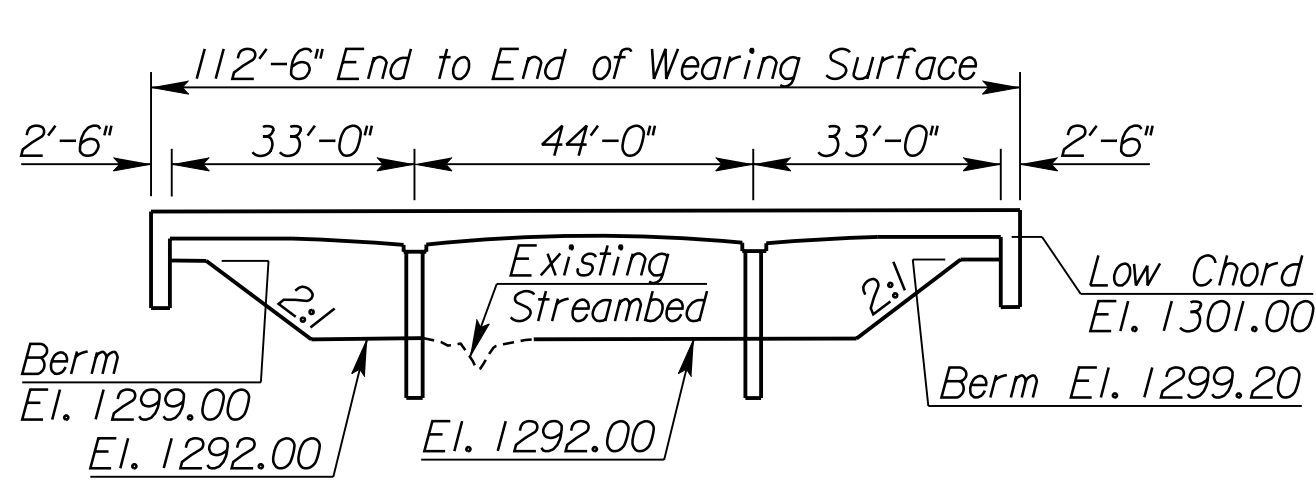
Sta. 2728+49.61 Construct
Br. No. (1)
75'-85'-75'
Continuous Prestressed Concrete Beam Spans;
Pile Bent Abutments and Column Bent Piers,
1-28' Roadway, 1-6' Sidewalk, 0° Skew

Sta. 730+88.26 Construct
Br. No. (1)
85'-90'-100'-100'-120'-122'-120'
Continuous Prestressed Concrete Beam Spans;
Pile Bent Abutments and Column Bent Piers,
2-60' Roadways, 0° Skew

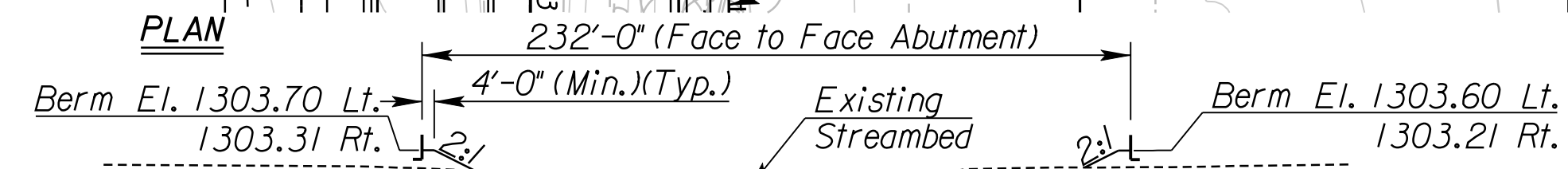
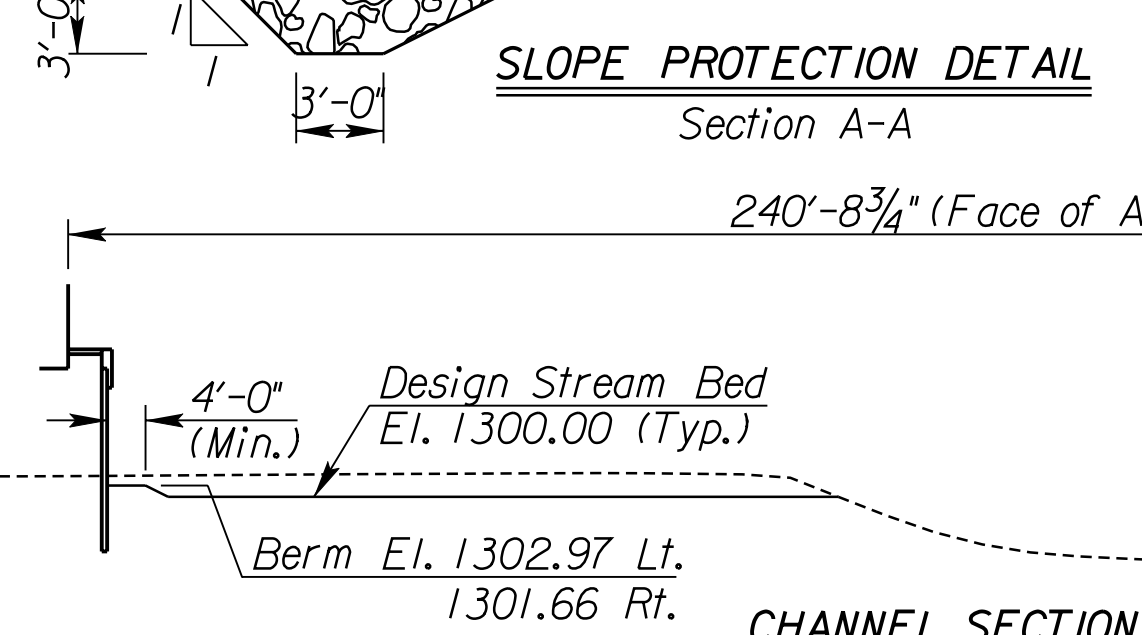


CHANNEL LAYOUT
(Stations/Offsets from @ Proposed Improvement)

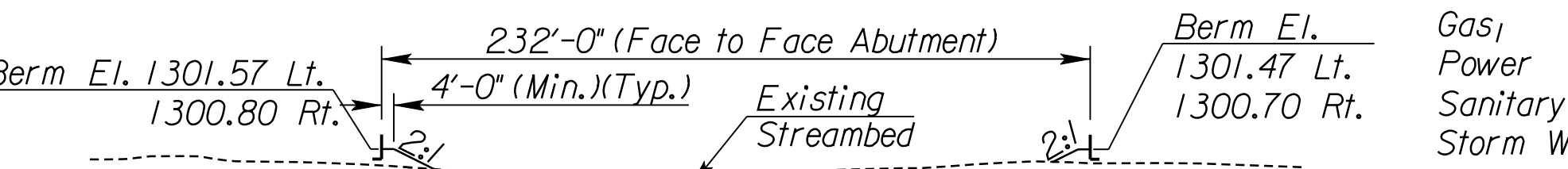
REMOVAL OF EXISTING STRUCTURE
The Contractor shall remove the existing bridge (K.D.O.T. No. XXXXX) consisting of 2-41' Roadways.
All material removed shall become the property of the Contractor and shall be removed from the project site by the Contractor. Remove all portions of the substructure (piling, footings, etc.) at least 3' below the existing streambed.
All labor and work is included in the bid item "Removal of Existing Structures", Lump Sum.



EXISTING EAST KELLOGG HAUNCH SLAB WATERWAY OPENING
(Looking Upstream) (Normal to @ Channel)
Waterway Opening = 829 Sq. Ft.



CHANNEL SECTION @ NORTH FR. RD. BRIDGE
(Looking Upstream) (Normal to @ Channel)



CHANNEL SECTION @ SOUTH FR. RD. BRIDGE
(Looking Upstream) (Normal to @ Channel)

- UTILITIES**
- Cable
 - Gas
 - Power
 - Sanitary Sewer
 - Storm Water Sewer
 - Telephone
 - Traffic Signal
 - Water
- Cox Communications
Kansas Gas Service
Westar
Wichita Water & Sewer
Wichita Water & Sewer
AT&T
City of Wichita
Wichita Water & Sewer

See Sh. No's. 102-130 for SWS Plans.
See Sh. No's. 136-139 for San. Sewer Plans.
See Sh. No's. 140-162 for Water Plans.

CITY OF WICHITA

EAST KELLOGG & FRONTAGE ROADS
OVER BROOKHAVEN CREEK & 159TH STREET EAST

BR. NO.	CONTOUR MAP	STA. 2728+49.61
BR. NO.		STA. 730+88.26
BR. NO.		STA. 1731+61.25

I:\0139 AM 2/25/2011 1:35:16 PM Cadd\Sheets\Structures\Bridges\159\EK259C1M.dgn
 SURV. PLOT CADD DES. DR. TR. APP. CKD.