

# STREET IMPROVEMENTS

**Mascot, from the south line of Lot 1, Block 1, North Elementary School Addition, to 33rd St. N;  
33rd St. N., from the west line of Arkansas Ave. to the west line of Lot 1, Carl Barbee Addition;**

**PROJECT NO. 472-84909  
O.C.A. #766256**

## GENERAL NOTES

- Contractor will be required to provide a minimum advance notice of seventy-two (72) hours to utility companies prior to starting any excavation as follows:  

Kansas One-Call	687-2470
-----------------	----------
- The Contractor must notify the following in case of an emergency:  

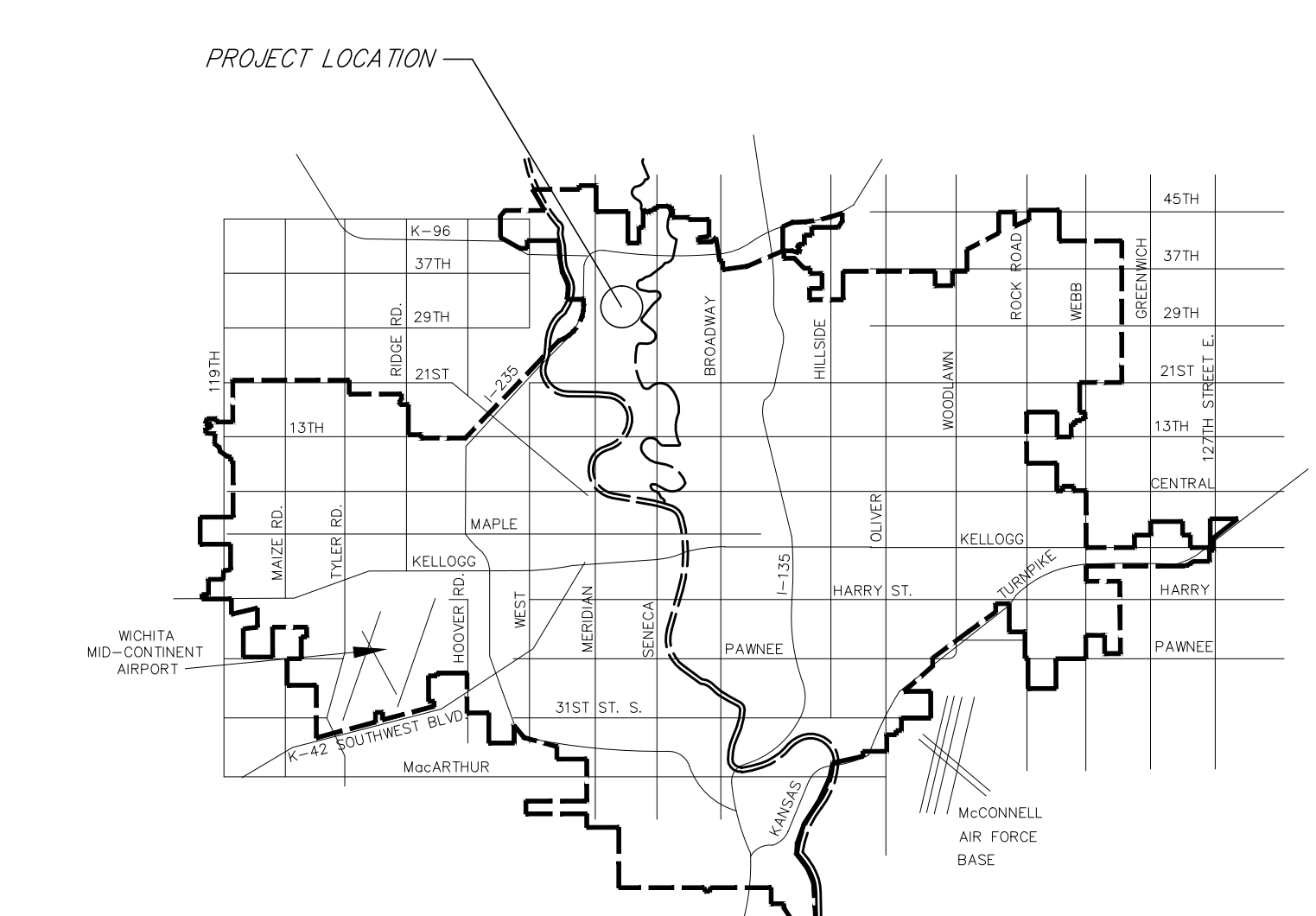
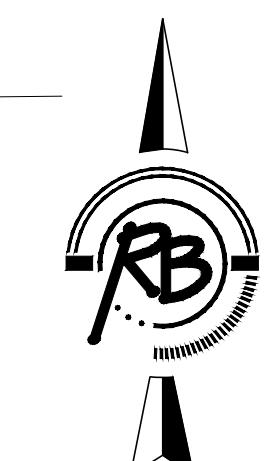
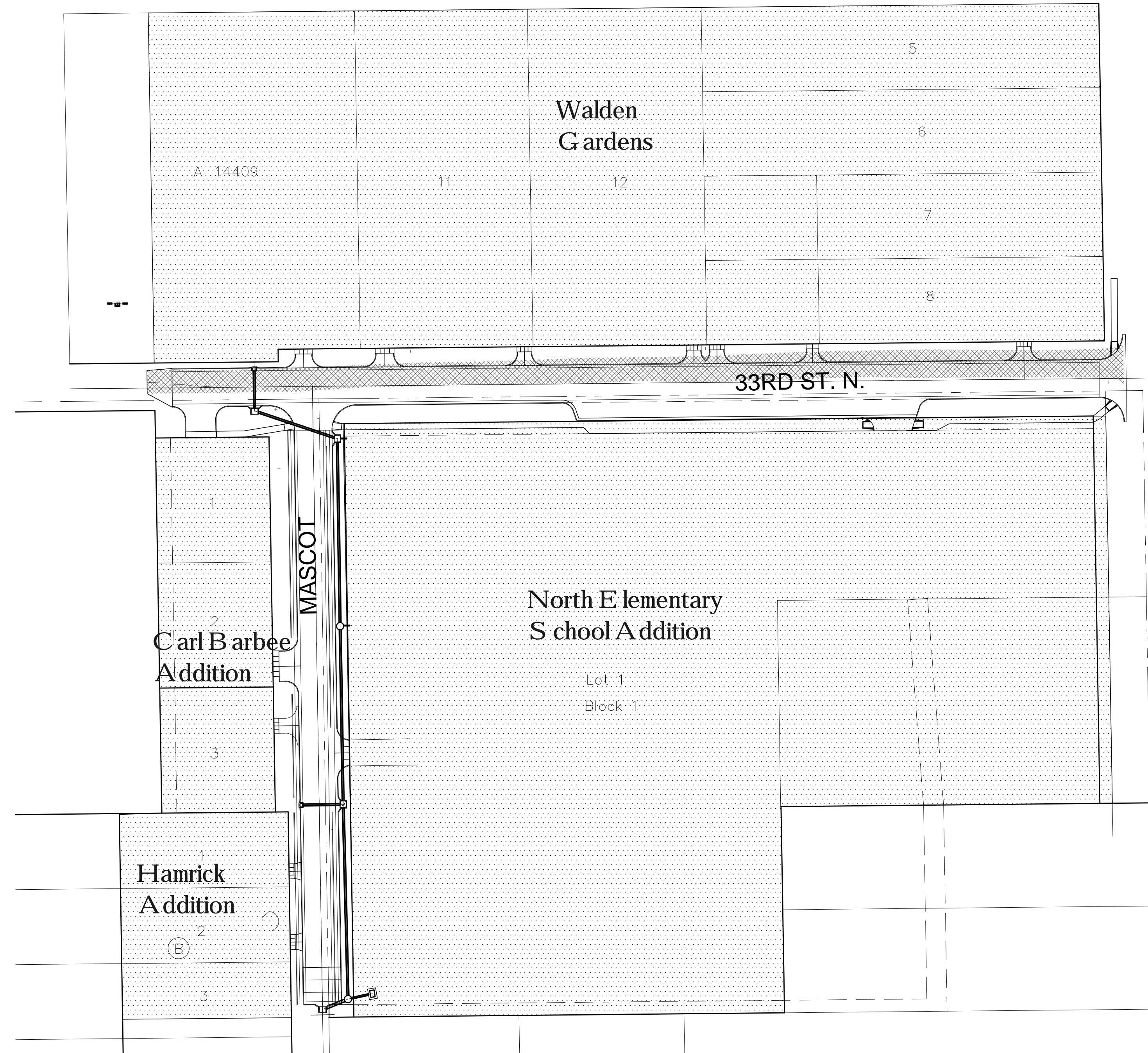
Cox Communications	260-7204
Kansas Gas Service	832-3126
Westar	383-8600
Black Hills Energy	1-800-303-0357
AT&T	1-800-286-8313
City of Wichita Water Utilities	262-6000
- Existing utilities and their location, as shown on the plans, represent the best information obtainable for design. Location information has been obtained from the various utility companies and is either from company record drawings or company-provided field locations. The Contractor will be required to work around existing utilities within the right-of-way which do not conflict with proposed construction.
- A saw cut of the full depth of existing surface courses or pavement thickness shall be provided at locations where proposed construction abuts an existing surface course or pavement for which partial removal of that surface or pavement is required, except when such saw cuts are within three (3) feet of an existing joint the limits of removal shall be extended to the existing joint.
- Rubble from the removal of miscellaneous structures and excess excavation which is to be wasted shall be disposed of on sites to be provided by the Contractor. These sites shall be approved by the Engineer as to suitability, appearance and site location. Locations that, in the opinion of the Engineer, will leave an unsightly appearance will not be approved.
- All disposal sites must be approved by the Kansas Department of Health and Environment. Material either stockpiled or disposed of in a flood plain would require a Kansas State Board of Agriculture permit. Any material dumped in waters of the United States or wetlands is subject to U.S. Corps permitting regulations. Any material buried or stockpiled beyond approved of Engineers construction limits would require additional archeological investigations unless buried in a previously approved borrow location.
- This project is to be constructed in accordance with City of Wichita Standard Specifications for the Construction of City Projects, and Policy on Construction of Infrastructure by Private Contract.
- No work shall begin on this project before bonds are submitted to the City of Wichita, and the project inspector has been notified.
- The Contractor shall submit a traffic control plan, to be approved by the Engineer prior to any work.
- This project is to be constructed as part of a larger building site. A Storm Water Prevention Plan and Erosion Control Plans have been developed for that project, and the Contractor shall perform all work in accordance with those plans.
- All existing sidewalks along 33rd Street North in conflict with this project are to be removed by the North Elementary School project. Existing Chainlink fence on the East side of Mascot is to be removed by the North Elementary School project.

## BENCHMARK

BENCH MARK: CHISELED SQUARE ON THE TOP OF CURB AT THE SOUTH CURB RETURN AT THE SOUTHEAST CORNER OF 33RD ST. N. AND ARKANSAS AVE. ELEVATION = 1317.54 (NAVD88)

## INDEX

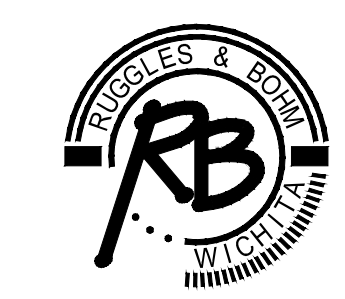
- TITLE SHEET
- 3. TYPICAL PAVEMENT SECTIONS
- CONCRETE PAVEMENT DETAILS
- VALLEY GUTTER DETAILS
- STANDARD DRIVEWAY ENTRANCE DETAILS
- WHEELCHAIR RAMP DETAILS
- SIGNAGE
- 33RD ST. N.
- MASCOT
- INTERSECTION DETAILS
- 14-15. STORM WATER SEWER PLAN/PROFILE
- DROP INLET DETAIL
- TYPE 1-A CURB INLET DETAILS
- TYPE 2 CURB INLET DETAILS
- EROSION CONTROL PLAN
- EROSION CONTROL DETAILS
- PAVING AND STORM WATER SEWER BUBBLE MAP
- CROSS SECTIONS



VICINITY MAP

**IMPROVEMENT DISTRICT**

**CITY OF WICHITA, KANSAS  
JAMES ARMOUR, P.E. - CITY ENGINEER**



**Ruggles & Bohm, P.A.**  
Engineering, Surveying, Land Planning  
924 North Main (316) 264-8008  
Wichita, Kansas 67203 (316) 264-4621 fax  
www.rbkansas.com E-mail: info@rbkansas.com  
RB Project 35917