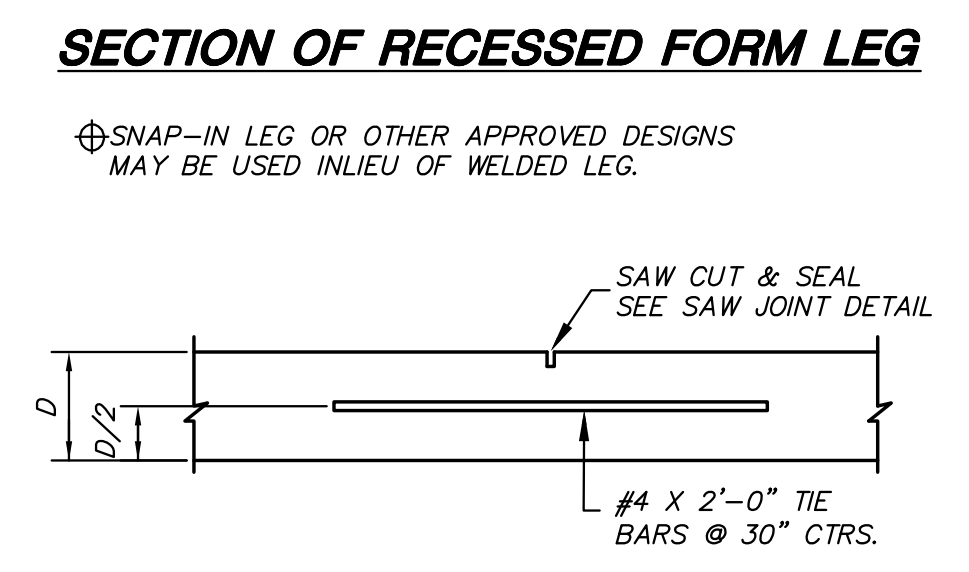
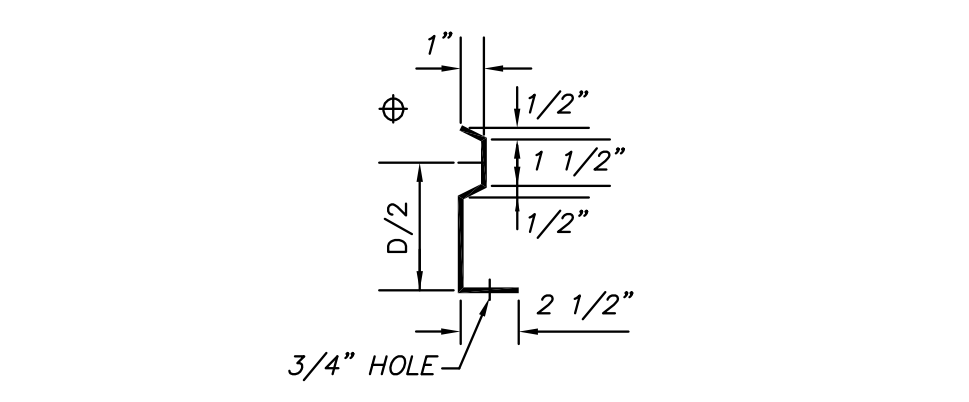
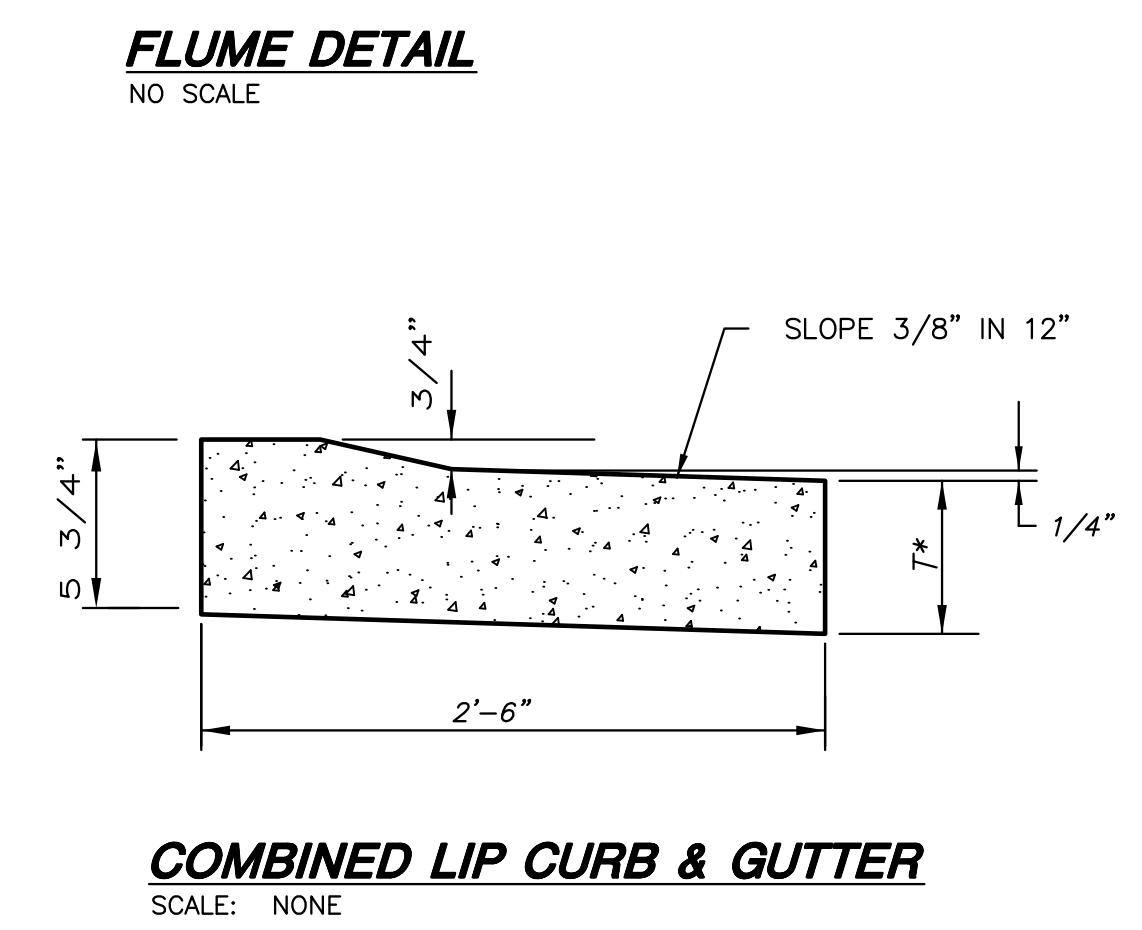
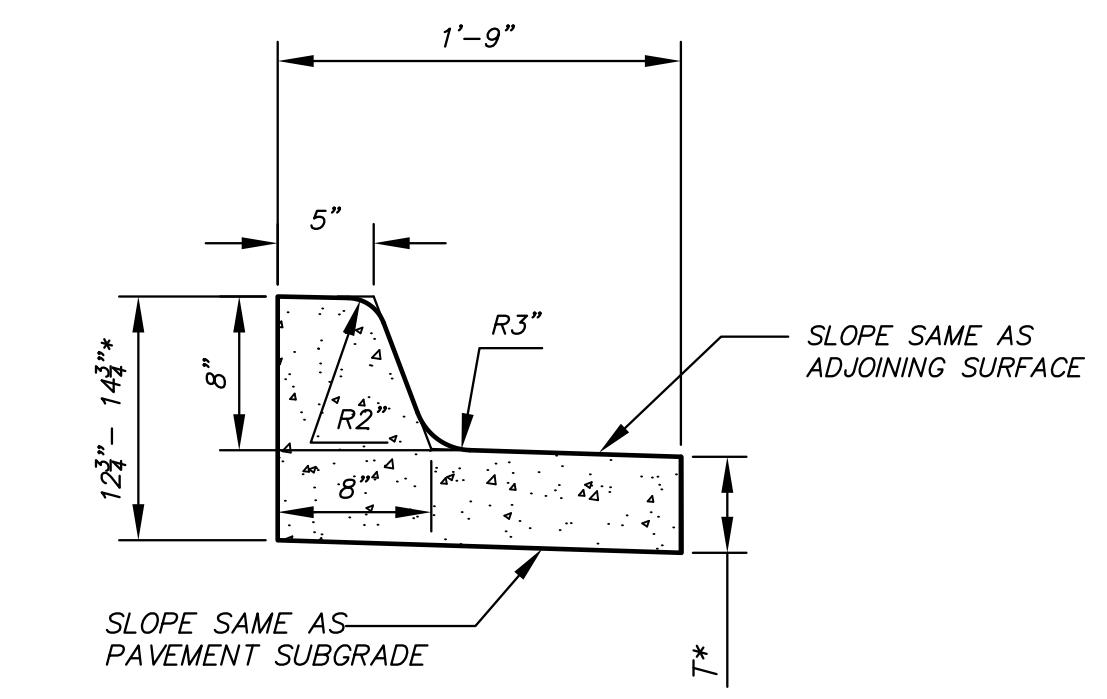
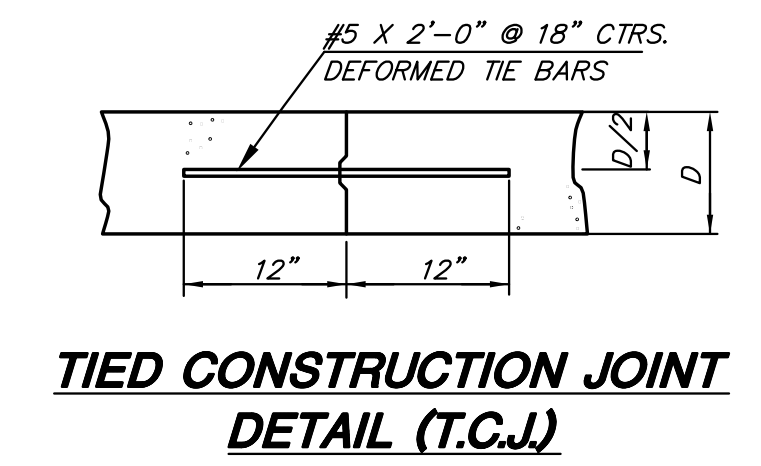
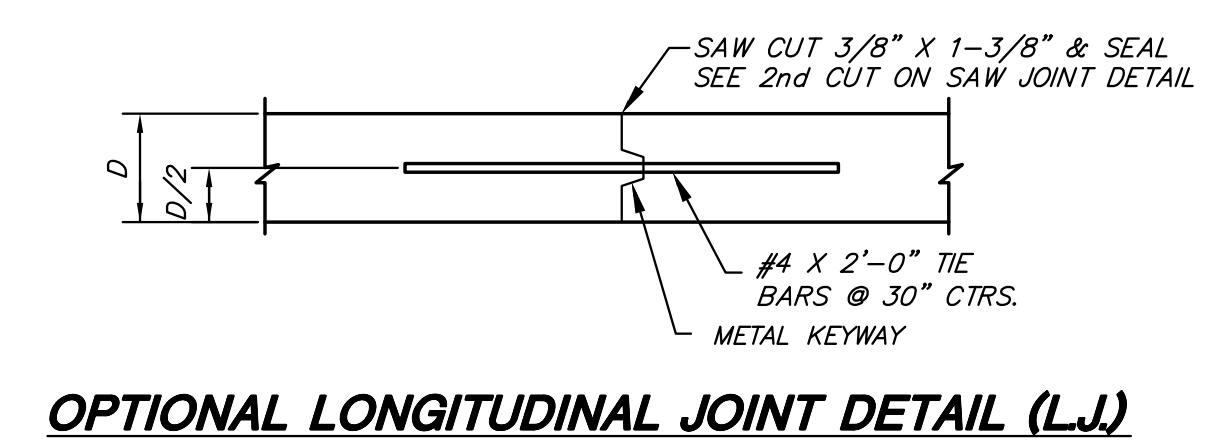
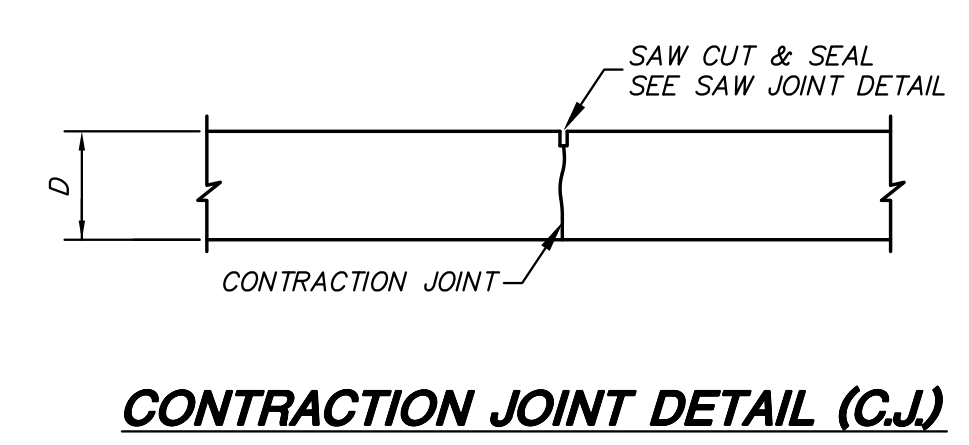
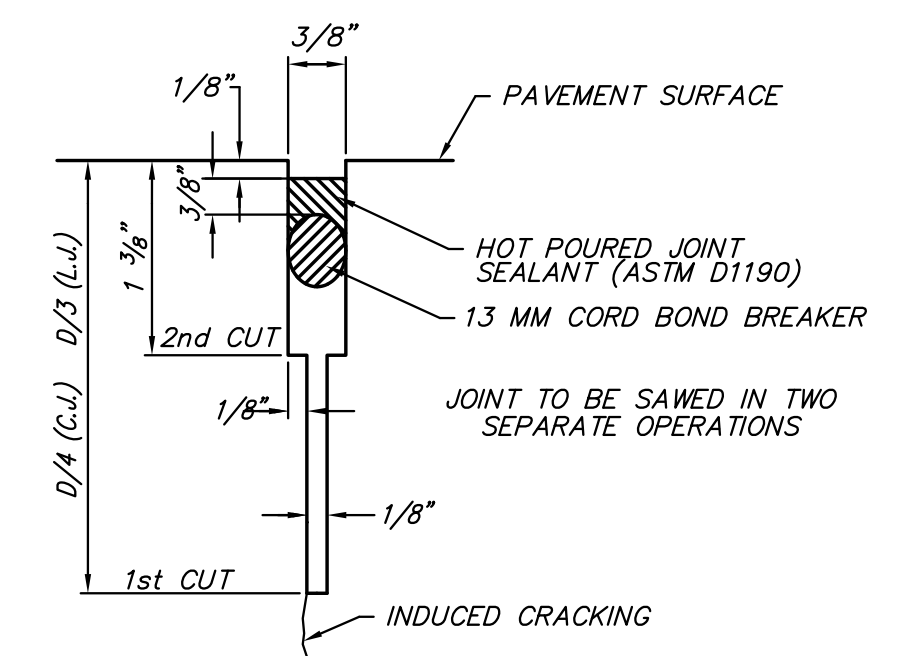
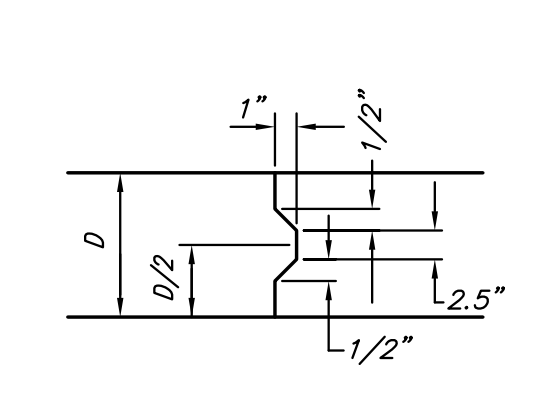


COMBINED CURB & GUTTER (3 5/8")
(ROLL CURB) TYPE 2



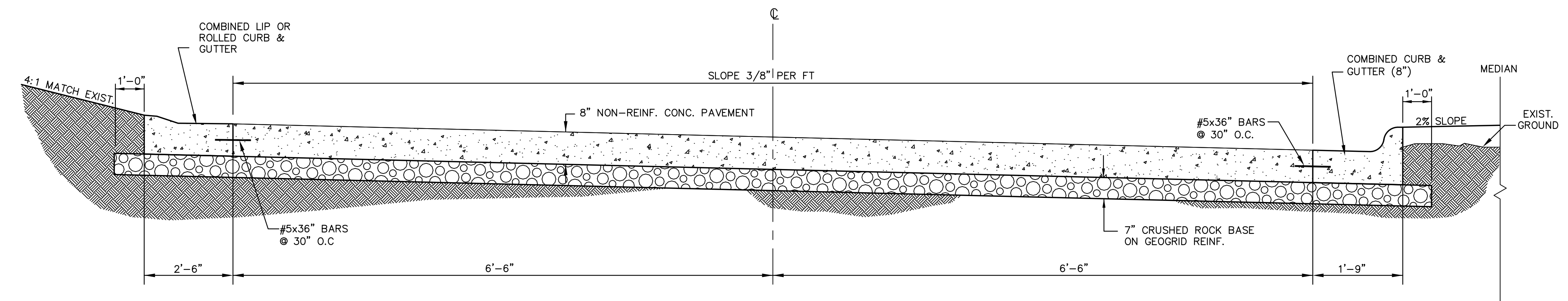
CONCRETE PAVEMENT PATCH DETAIL
BID ITEM "CONC. BASE 5" REMOVED/REPLACED"



T* = THICKNESS OF CURB TO ADJUST WITH PAVEMENT THICKNESS

GENERAL NOTE

1. COMBINED CURB AND GUTTER OR GUTTER ADJOINING CONCRETE PAVEMENT MAY, AT THE CONTRACTOR'S OPTION, BE POURED EITHER MONOLITHICALLY OR SEPARATELY, USING EITHER THE MIX USED IN THE CONCRETE PAVEMENT OR CLASS "A" CONCRETE (AE). THE COMBINED CURB AND GUTTER OR GUTTER SHALL HAVE THE SAME SECTION AS SHOWN ON THE PLANS. IF POURED MONOLITHICALLY, DOWEL BARS MAY BE OMITTED FROM THE COMBINED CURB AND GUTTER OR GUTTER, BUT THE WIRE MESH SHALL BE EXTENDED TO 6" OR LESS FROM THE BACK OF THE CURB OR GUTTER. PAVEMENT JOINTS SHALL BE CONTINUED THROUGH CURB OR GUTTER AND NO OTHER PLANES OF WEAKNESS WILL BE REQUIRED. JOINTS IN THE COMBINED CURB AND GUTTER OR GUTTER ARE TO BE FILLED WITH THE SAME MATERIAL AS USED FOR THE PAVEMENT JOINTS.
2. EXPANSION JOINTS IN THE COMBINED CURB AND GUTTER ARE TO BE PLACED OPPOSITE EXPANSION JOINTS IN THE PAVEMENT.
3. WHERE COMBINED CURB AND GUTTER OR GUTTER DOES NOT ABUT CONCRETE PAVEMENT OR CONCRETE BASE COURSE, OMIT TIE BARS AND LONGITUDINAL CONSTRUCTION JOINT AND PLACE A 1" PREMOULDED EXPANSION JOINT FILLER (NONEXTRUDING, TYPE B) CUT TO THE DIMENSIONS OF THE COMBINED CURB AND GUTTER OR GUTTER, AT A SPACING NOT TO EXCEED 250' AND AT THE ENDS OF CURB RETURNS. WHERE COMBINED CURB AND GUTTER OR GUTTER IS ADJACENT TO BITUMINOUS CONSTRUCTION, PLANES OF WEAKNESS SHALL BE CONSTRUCTED AT 20' INTERVALS.
4. A 4' LENGTH OF TRANSITION FROM NORMAL GUTTER SECTION TO THE TAPERED GUTTER SECTION SHALL BE USED AT THE ENDS OF EACH RUN OF GUTTER EXCEPT WHERE THE GUTTER ABUTS A CURB, SUCH AS AT THE END OF A BRIDGE. INLETS SHALL BE LOCATED SO AS NOT TO FALL WITHIN THIS TRANSITION SECTION.
5. WHERE PRESSURE RELIEF JOINT (URETHANE FOAM) IS PLACED ACROSS THE PAVEMENT, AND GUTTER OR CURB AND GUTTER IS CONTINUED ON FOR MORE THAN 10', USE TYPE B, NONEXTRUDING, JOINT FILLER THROUGH GUTTER SECTION, SHAPED TO FIT GUTTER OR CURB AND GUTTER. MATERIAL MAY BE SOLID TYPE B, APPROXIMATELY 4" THICK, OR OTHER THICKNESS PIECES (TYPE B), BONDED TOGETHER WITH COLD MASTIC OR OTHER MATERIAL, AS APPROVED BY THE ENGINEER.
6. FOR EXPANSION JOINT TREATMENT WHERE COMBINED CURB AND GUTTER OR GUTTER ABUTS A BRIDGE WING ON A U TYPE ABUTMENT SEE BRIDGE DRAWINGS.
7. LONGITUDINAL JOINTS SHALL BE SAWS AND SEALED WITH JOINT SEALANT. SEE SPECIAL PROVISIONS FOR TYPE.
8. CONTRACTOR SHALL SUBMIT A CONCRETE PAVEMENT JOINTING PLAN FOR THE BUS DROP-OFF PAVEMENT FOR APPROVAL PRIOR TO CONSTRUCTION.
9. WWF 6"x12" w4xw4 WIRE MESH SHALL BE INSTALLED IN ALL NON-RECTANGULAR PANELS, ALL RECTANGULAR PANELS HAVING A WIDTH-TO-LENGTH RATIO OF 1:1.33 AND IN PANELS WITH VALLEY GUTTER RUNNING THROUGH THEM.



NOTE: CONTRACTOR TO SUBMIT JOINT DETAIL PLAN FOR REVIEW.

PAV. DTLS.
SHEET TITLE
472-84976
PROJECT NUMBER

MKEC MKEC MKEC
DESIGNED DRAWN CHECKED

ISSUED
March 2011
REVISED

SHEET NO.
12 of 21

PLOTTED: Thursday, March 03, 2011 @ 01:56PM

J:\CIVIL\08603\DWG\PAV\BUS TURNAROUND\SHEETS\08603-DTL-2.DWG