

PERIMETER ROAD IMPROVEMENTS
BOTANICA - THE WICHITA GARDENS

S. PAV. PLAN

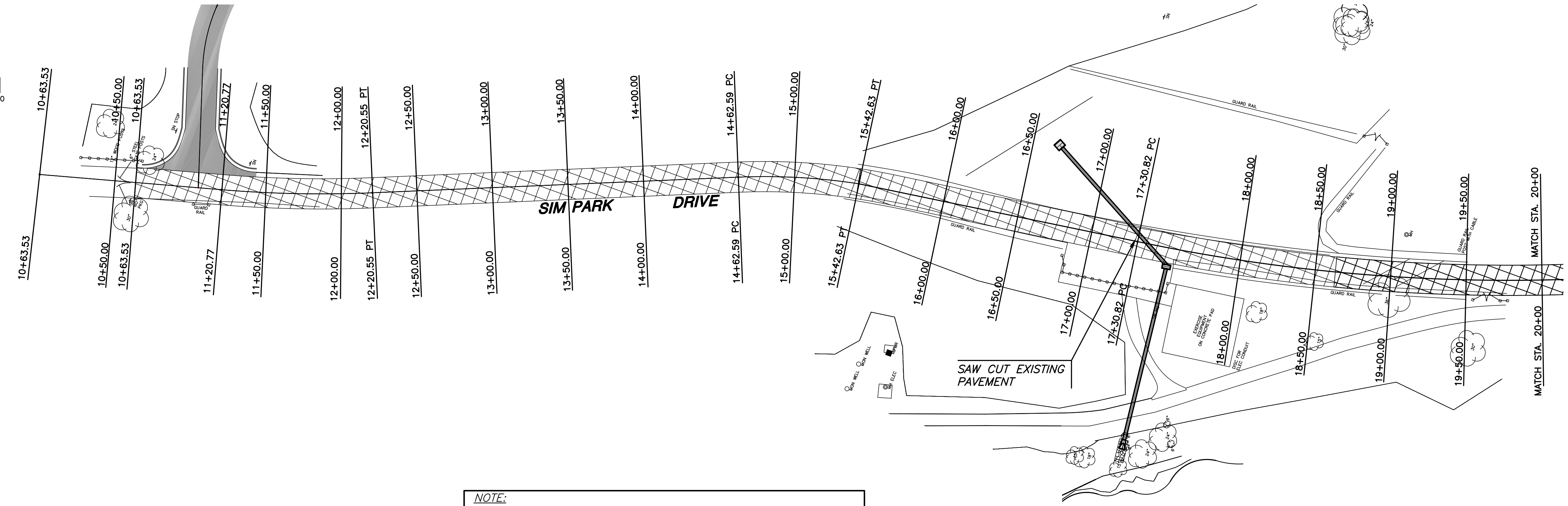
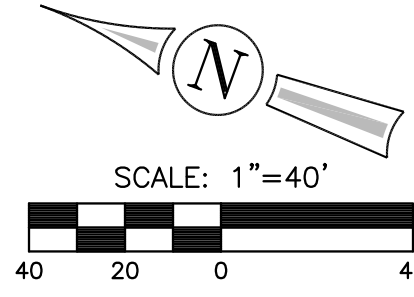
SHEET TITLE
472-84976
PROJECT NUMBER

DFL KKL/DM, JRA
DESIGNED DRAWN CHECKED

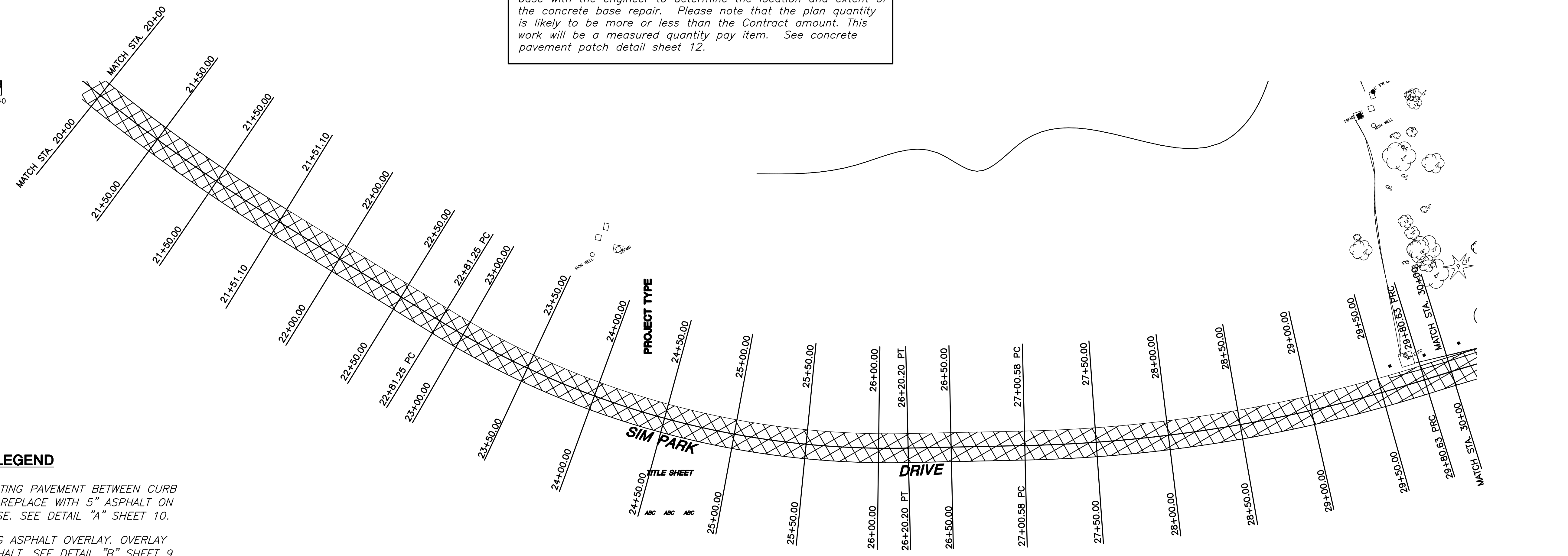
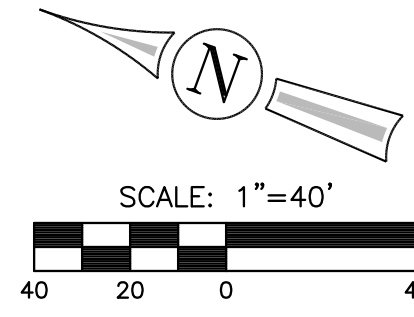
ISSUED
March 2011

REVISED

SHEET NO.
8 of 21



NOTE:
The Contract includes 300 s.y. of "Concrete Base 5", Remove and Replace" along Sim Park Drive. After removal of the overlaying asphalt, the contractor shall inspect the concrete base with the engineer to determine the location and extent of the concrete base repair. Please note that the plan quantity is likely to be more or less than the Contract amount. This work will be a measured quantity pay item. See concrete pavement patch detail sheet 12.



LEGEND

- REMOVE EXISTING PAVEMENT BETWEEN CURB & GUTTERS. REPLACE WITH 5" ASPHALT ON 5" ROCK BASE. SEE DETAIL "A" SHEET 10.
- MILL EXISTING ASPHALT OVERLAY. OVERLAY WITH 4" ASPHALT. SEE DETAIL "B" SHEET 9.