

PERIMETER ROAD IMPROVEMENTS
BOTANICA - THE WICHITA GARDENS

DEMOLITION PLAN

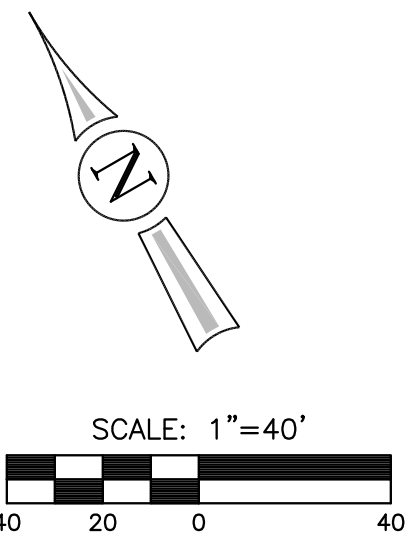
SHEET TITLE
472-84976
PROJECT NUMBER

DFL / DM / JRA
DESIGNED / DRAWN / CHECKED

ISSUED
March 2011

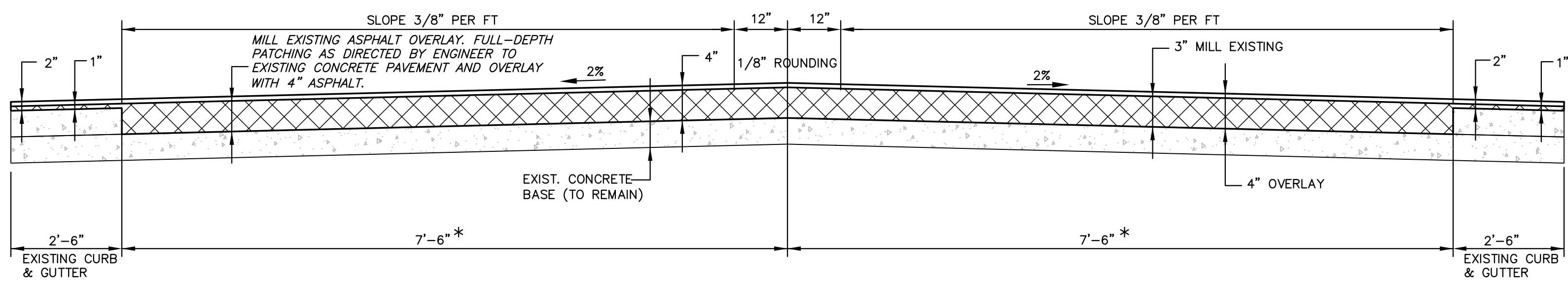
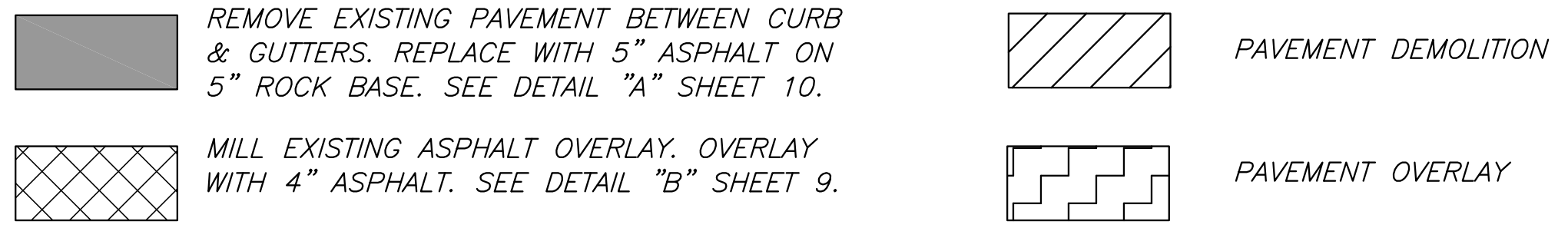
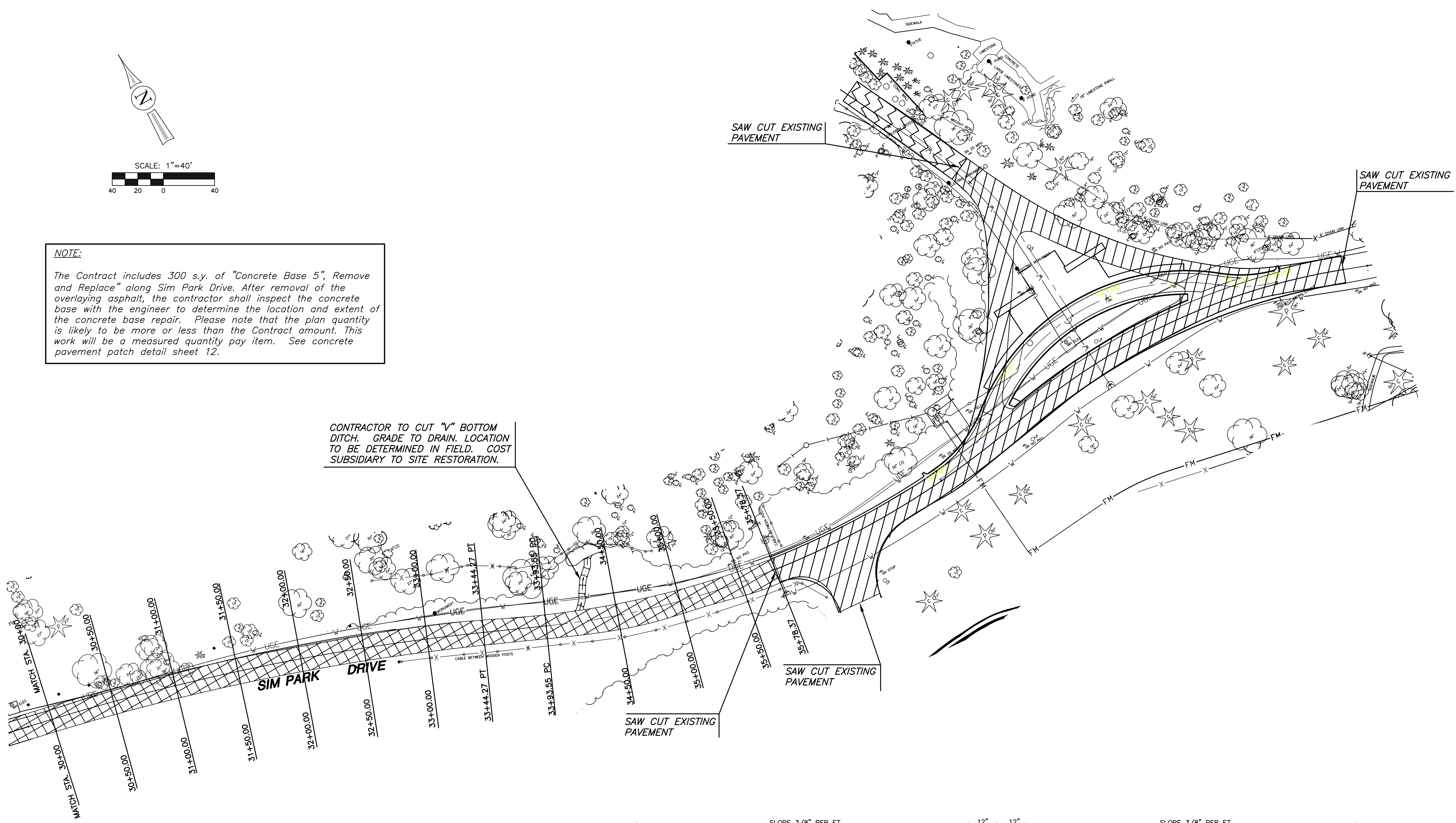
REVISED

SHEET NO.



NOTE:
The Contract includes 300 s.y. of "Concrete Base 5", Remove and Replace" along Sim Park Drive. After removal of the overlying asphalt, the contractor shall inspect the concrete base with the engineer to determine the location and extent of the concrete base repair. Please note that the plan quantity is likely to be more or less than the Contract amount. This work will be a measured quantity pay item. See concrete pavement patch detail sheet 12.

CONTRACTOR TO CUT "V" BOTTOM DITCH. GRADE TO DRAIN. LOCATION TO BE DETERMINED IN FIELD. COST SUBSIDIARY TO SITE RESTORATION.



DETAIL "B"
MILL EXISTING ASPHALT OVERLAY.
FROM STA. 10+63.53 TO STA. 35+87.37

PLOTTED: Thursday, March 03, 2011 @ 11:42AM

J:\CIVIL\08603\DWG\PAV\BUS TURNAROUND\SHEETS\08603_LEB.DWG