

PLAZA HARDSCAPE AND FENCING IMPROVEMENTS

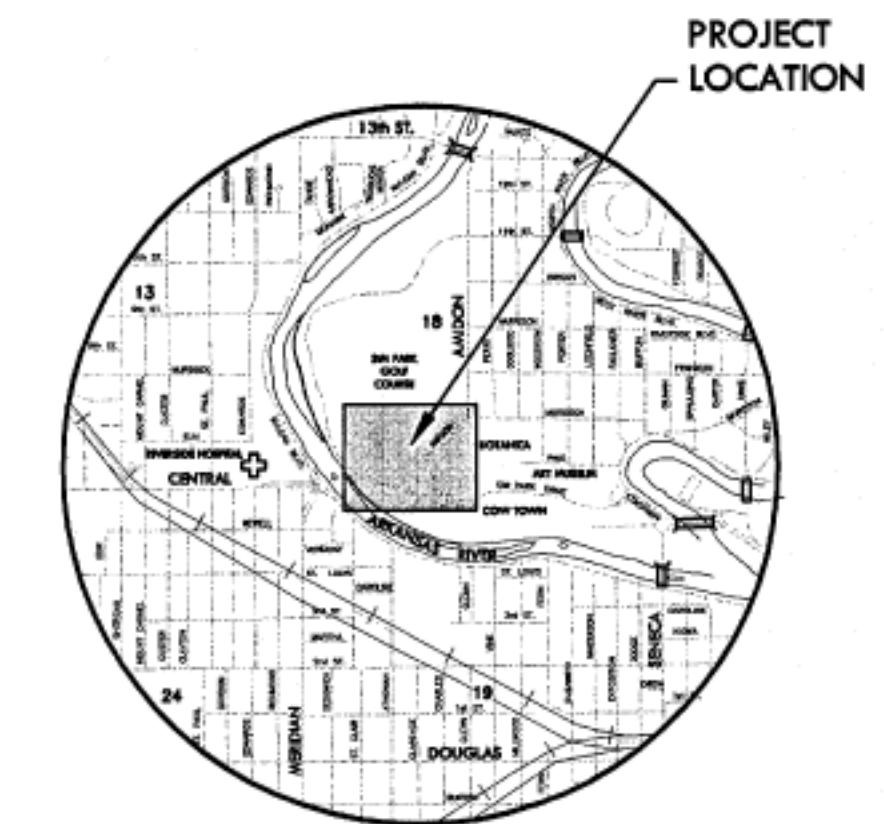
FOR
BOTANICA - THE WICHITA GARDENS

PROJECT NO. 472-84977

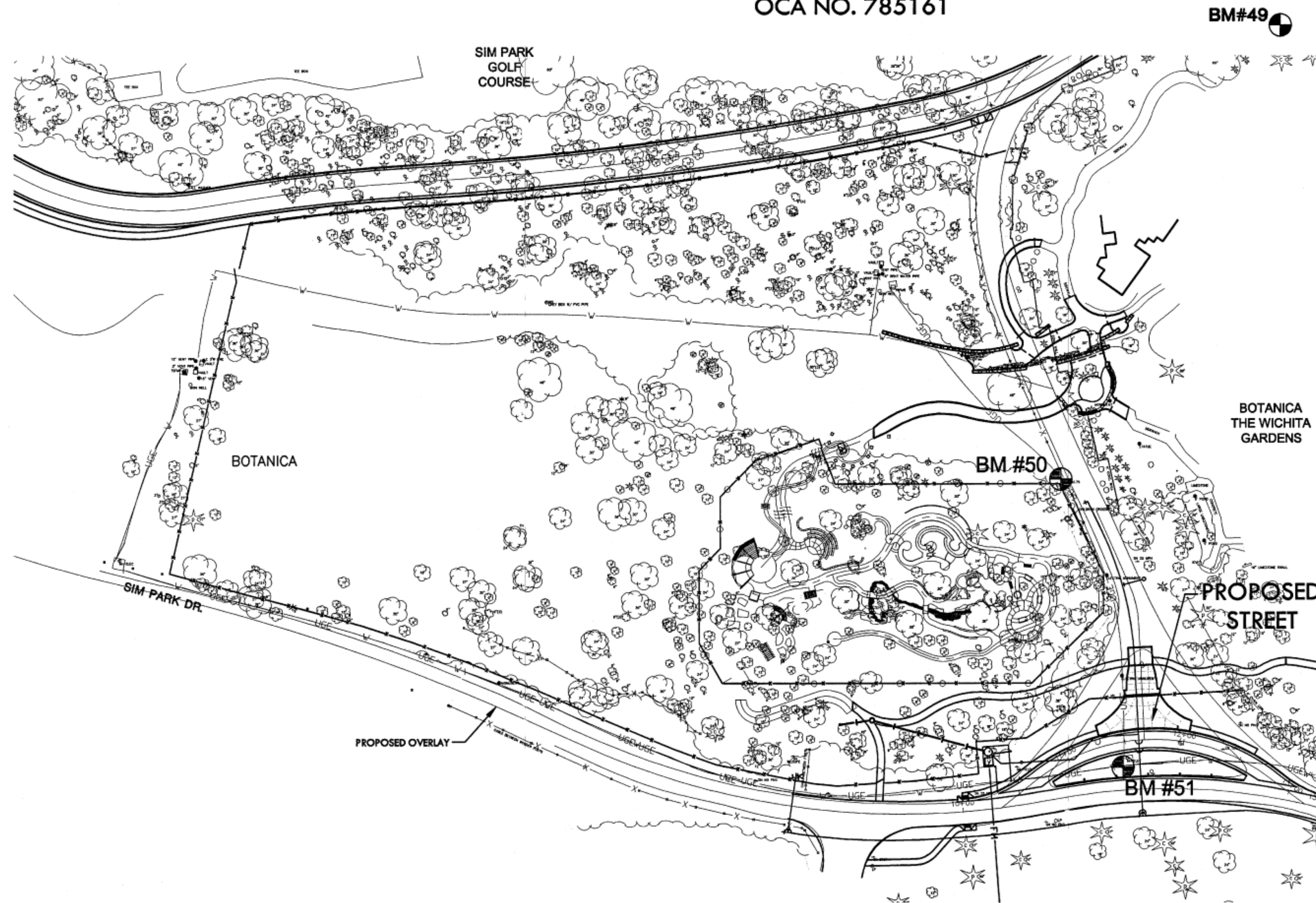
THE CITY OF WICHITA, KANSAS
JAMES L. ARMOUR, P.E. - CITY ENGINEER

OCA NO. 785161

MKEC
ENGINEERING
CONSULTANTS, INC.
411 N. WEBB ROAD
WICHITA, K.S. 67206
316 - 684 - 9600



VICINITY MAP

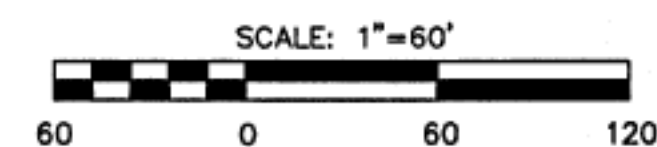


INDEX TO DRAWINGS

SHEET NO.	DESCRIPTION
1	TITLE SHEET
2	GENERAL NOTES
3	EXISTING CONDITIONS
4	DEMOLITION PLAN
5	DROP OFF DIMENSION PLAN
6	SIDEWALK DIMENSION PLAN
7	PLAZA DIMENSION PLAN
8	FENCE DIMENSION PLAN
9	DROP OFF GRADING PLAN
10	SIDEWALK GRADING PLAN
11	PLAZA GRADING PLAN
12-16	BMP DETAILS
17	IRRIGATION PLAN
18-21	DETAILS

BENCHMARKS

- BM #49** CHISELED "X" ON TOP OF NORTH CURB OF MURDOCK, 21.0' NORTH OF CENTERLINE MURDOCK AND 61.3' EAST OF CENTERLINE AMIDON. ELEV. = 1303.04 NGVD 88
- BM #50** BRASS DISC SET IN A CONCRETE POST, 6' WEST OF THE BACK OF THE WEST CURB OF AMIDON, 280' +/- NNW OF THE CENTER OF SIM PARK DRIVE, 42.9' SSE OF HORIZONTAL CONTROL POINT #13. ELEV. = 1303.75 NGVD 88
- BM #51** CHISELED SQUARE ON SOUTHWEST CORNER OF CONCRETE VAULT IN ISLAND AT INTERSECTION OF SIM PARK DRIVE AND AMIDON, 9' NORTH OF THE BACK OF THE NORTH CURB OF SIM PARK DRIVE, 64' EAST OF THE WEST END OF THE ISLAND AND 24' WNW OF A LIGHT POLE. ELEV. = 1302.17



PLAZA HARDSCAPE AND FENCING IMPROVEMENTS BOTANICA - THE WICHITA GARDENS

TITLE SHEET

SHEET TITLE
472-84977
PROJECT NUMBER

BJH | JLB | JAG
DESIGNED DRAWN CHECKED

ISSUED
MARCH 8, 2011

REVISED

SHEET NO.
1 of 21