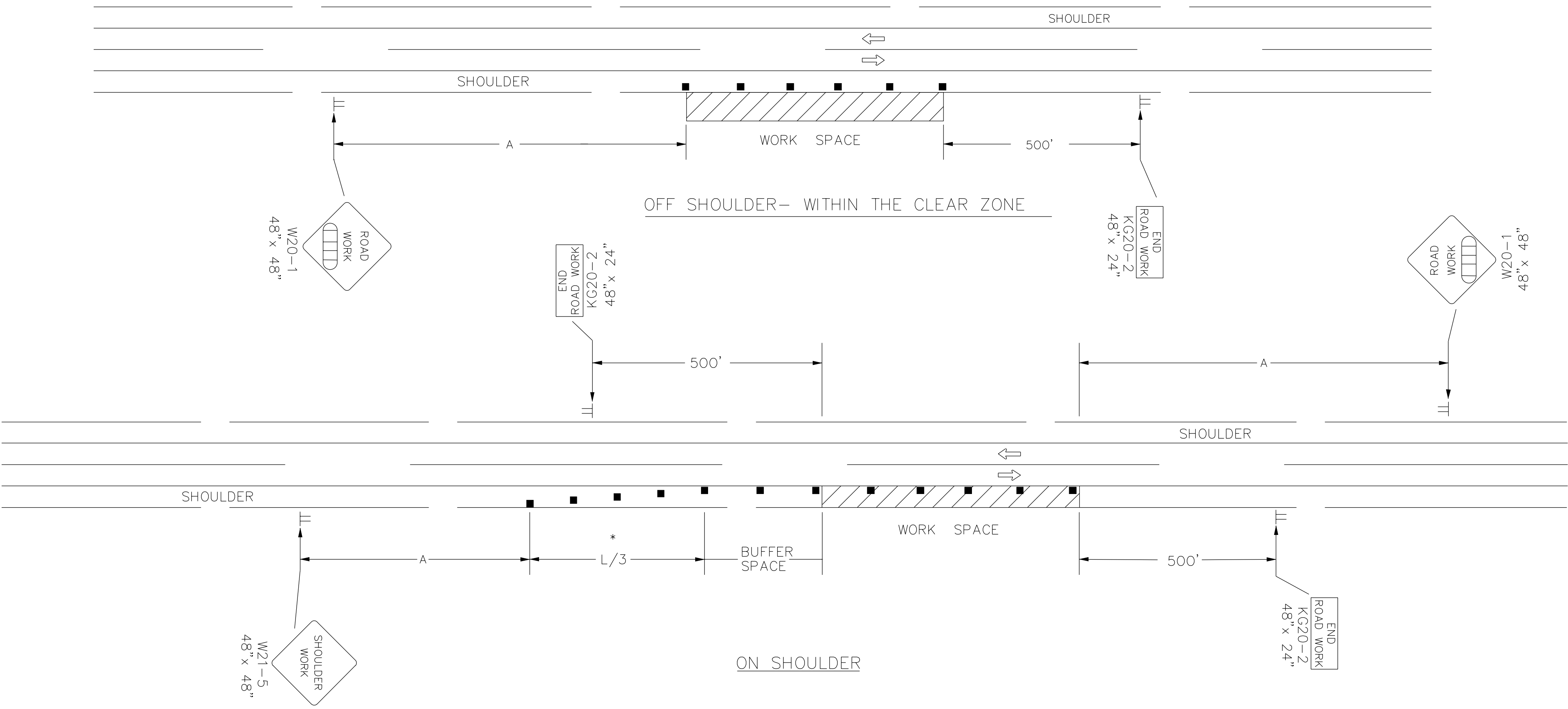


STATE	PROJECT NO.	YEAR	SHEET NO.	TOTAL SHEETS
KANSAS				

DATE	APPR
DESCRIPTION	MARK

REFER TO STD. TE710 FOR ADDITIONAL INFORMATION ON TEMPORARY TRAFFIC CONTROL SIGNS AND SIGN SPACING.
 REFER TO STD. TE702 FOR INFORMATION ON TAPERS AND CHANNELIZING DEVICES.
 REFER TO STD. TE700 FOR LENGTH OF BUFFER SPACE.

NOTE:
 NO TRAFFIC CONTROL IS REQUIRED IF THE WORK SPACE IS LOCATED OUTSIDE OF THE CLEAR ZONE.
 FOR OPERATIONS OF 60 MINUTES OR LESS, ALL SIGNS AND CHANNELIZING DEVICES MAY BE ELIMINATED IF A VEHICLE WITH HIGH-INTENSITY ROTATING, FLASHING, OSCILLATING, OR STROBE LIGHTS IS USED.



WHEN CONCRETE BARRIER SYSTEM IS USED, PORTABLE CHANNELIZING DEVICES ARE NOT NEEDED ALONG THE TANGENT BARRIER SECTION. DELINEATION ON THE BARRIER SYSTEM IS STILL REQUIRED. SEE RD622.

* OMIT TAPER IF PAVED SHOULDER IS LESS THAN 8' WIDE.

■ Channelizing Device
 □□□□ AHEAD, 1500 FT, OR 1 MILE

NO.	DATE	REVISIONS	BY	APP'D
3	8-8-07	G20-2 CHANGED TO KG20-2	M.B.	A.A.A.
2	12-29-05	UPDATED END ROAD WORK SIGN DESIGNATION	M.B.	A.A.A.
1	11-19-03	CHANGED BORDER	B.H.	S.A.B.

DESIGNED BY: Lary J. Sample, P.E.	DATE: 2011/Feb./02
DWN BY: Staff	CKD BY: RLW
APP BY: LIS	
FILE NAME: 28_TRAFFIC CONTROL DETAILS AND NOTES.dgn	
AMEC PROJ. NO. 5-6150-0001	
TRAFFIC CONTROL DETAILS AND NOTES	
C-504	
SHEET 28 OF 28	

Levee "C" Freesboard Remediation (Station 1560+00 to K-96)
 Improvements For the WICHITA-VALLEY CENTER LOCAL FLOOD PROTECTION PROJECT
 WICHITA, KANSAS

PREPARED FOR
THE CITY OF WICHITA, KANSAS
 465 N. Main
 Wichita, KS 67202



ameco
 AMEC Earth & Environmental, Inc.
 1129 SW Wensmaker
 Topeka, Kansas 66604
 Phone: (785) 272-6830
 Fax: (785) 272-6878

