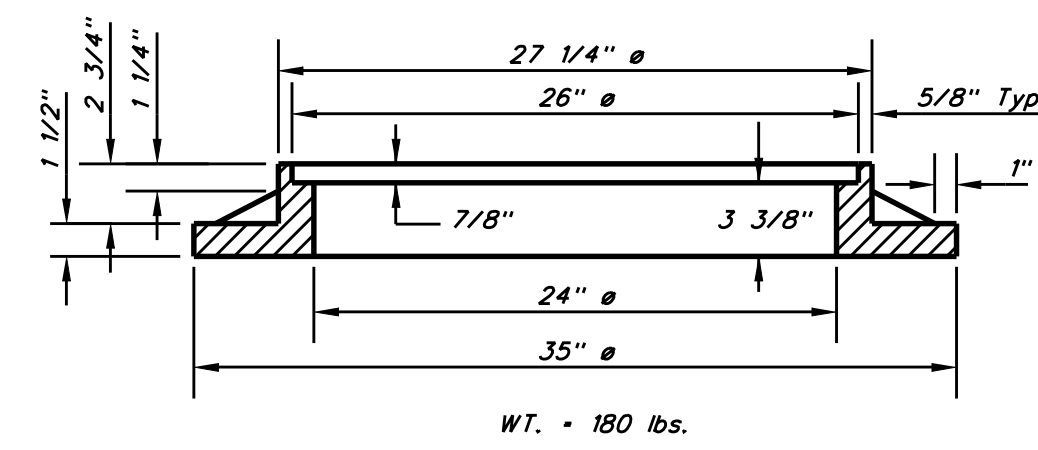
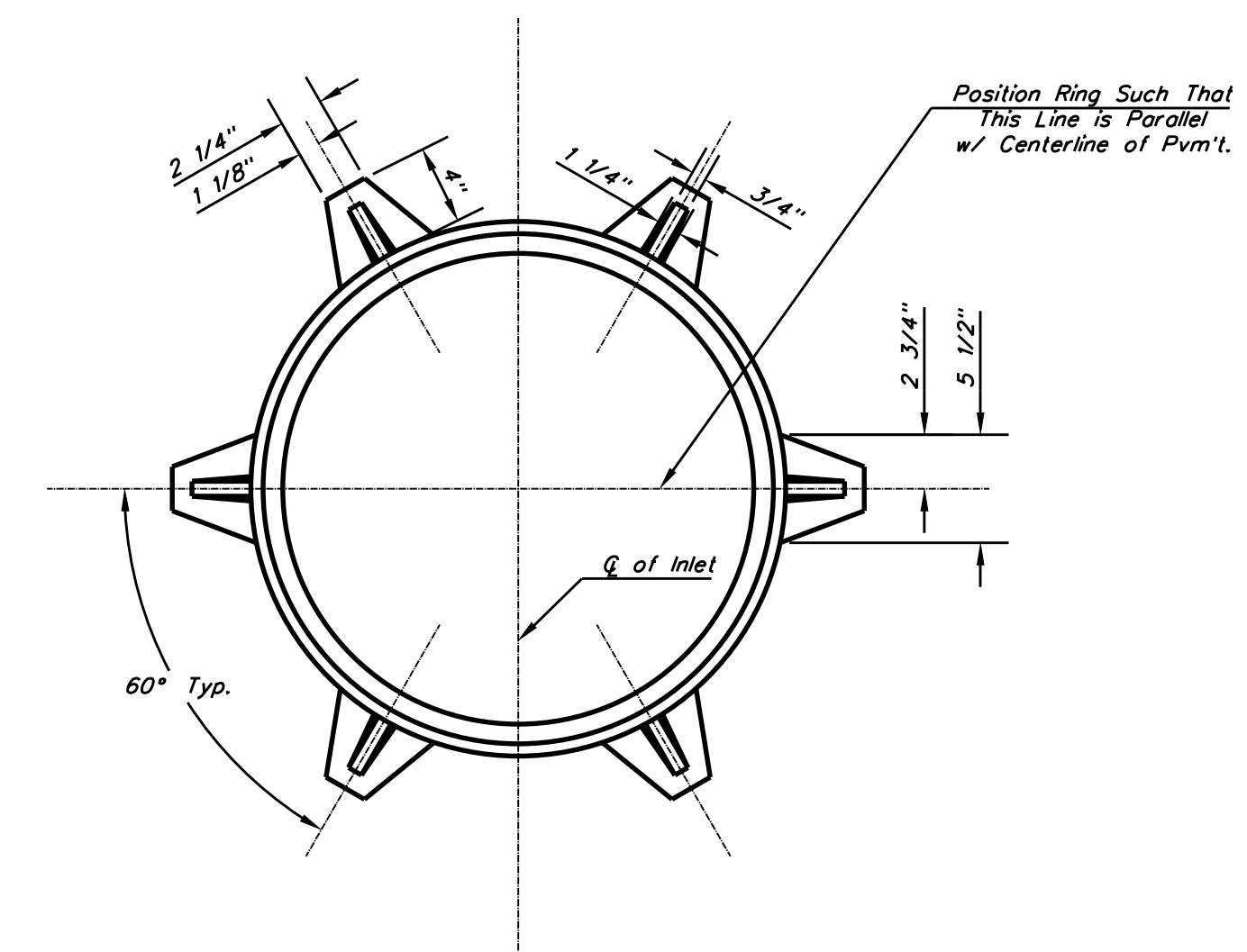
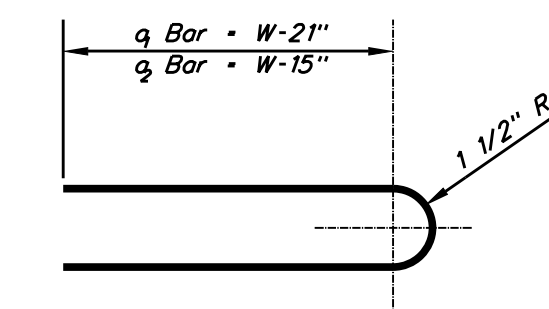


SECTION A-A



MANHOLE RING AND COVER

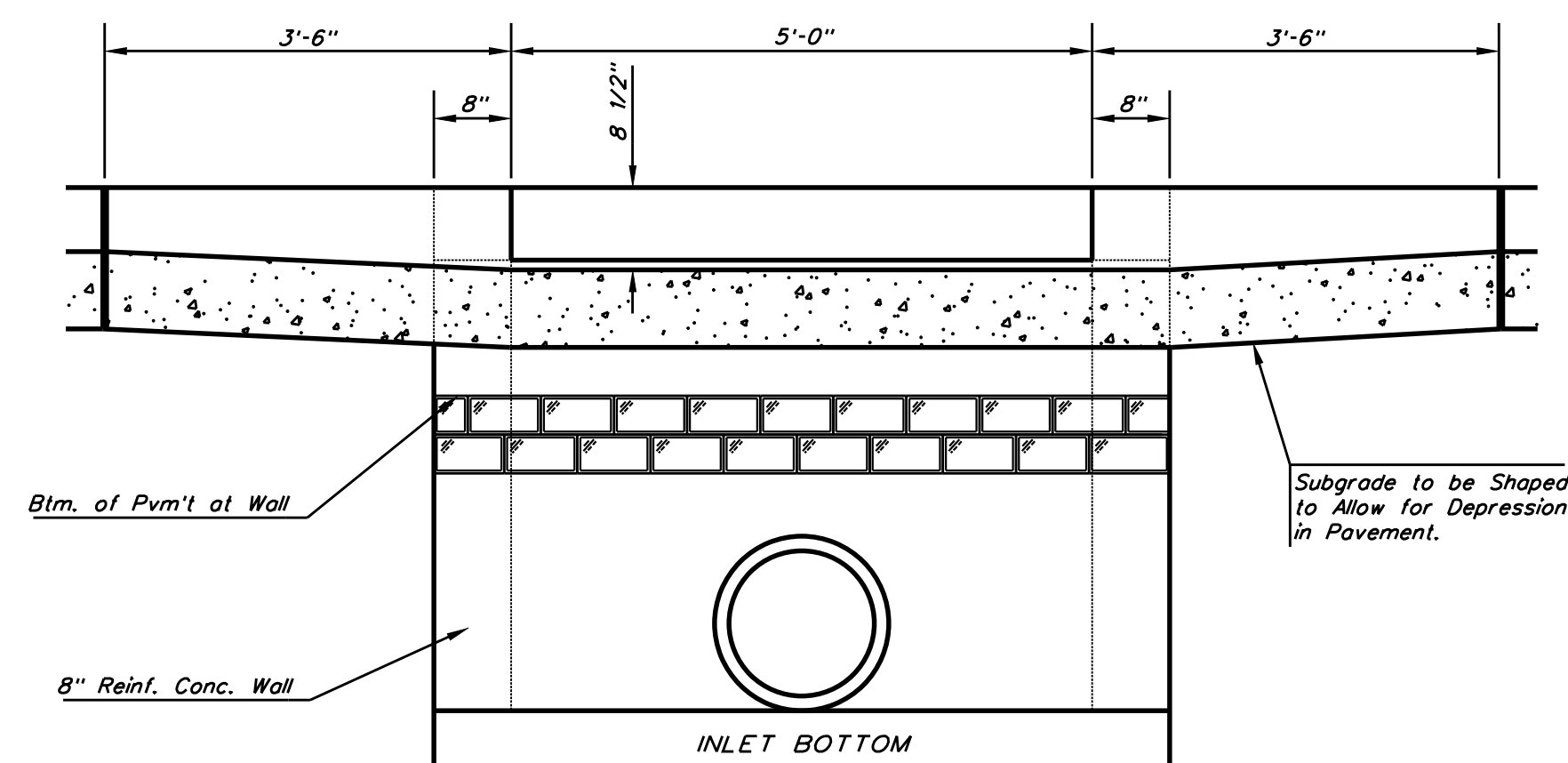
\*See City of Wichita Standard Manhole Ring and Cover Detail Sheet for Cover Details to Be Used With Inlet Frame.



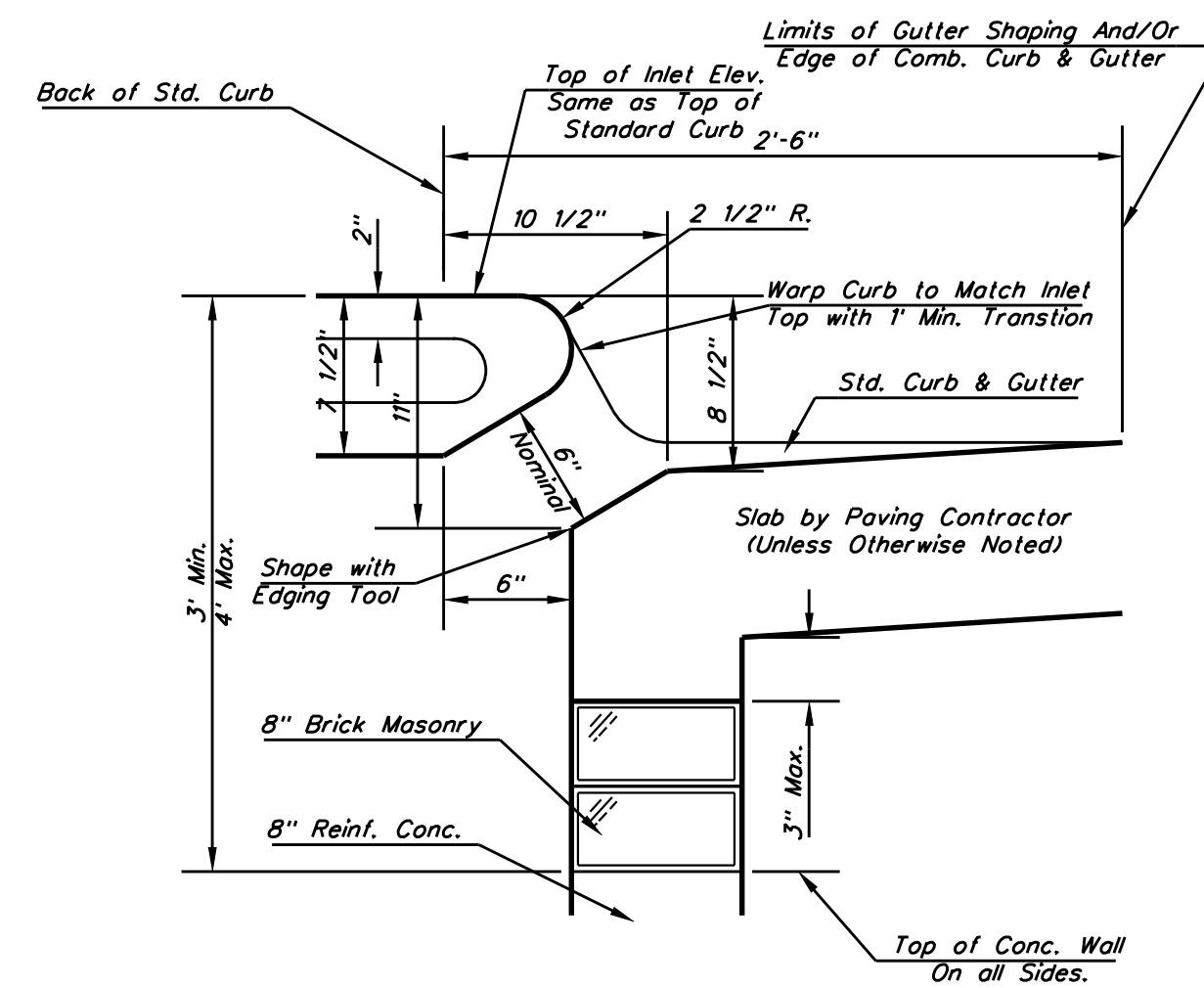
BENDING DIAGRAM

GENERAL NOTES

- Concrete tops to be installed on thin mortar cushion to insure full support along brick walls. Concrete tops may be cast in place or precast. Concrete used for inlet construction shall be concrete pavement mix.
- Contractor shall have the option of constructing 8" brick masonry walls between the concrete inlet base and top on this inlet when W=5'-0" and H=7'-0" or less.
- Inlet invert shall be shaped with 8 sack sand mix concrete to create flow channels and to increase hydraulic efficiency such that the inlet will be self cleaning between all inlet and/or outlet pipes.
- The ends of all pipes installed in inlets shall be cut off flush with the inside face of the inlet wall.



SECTION C-C



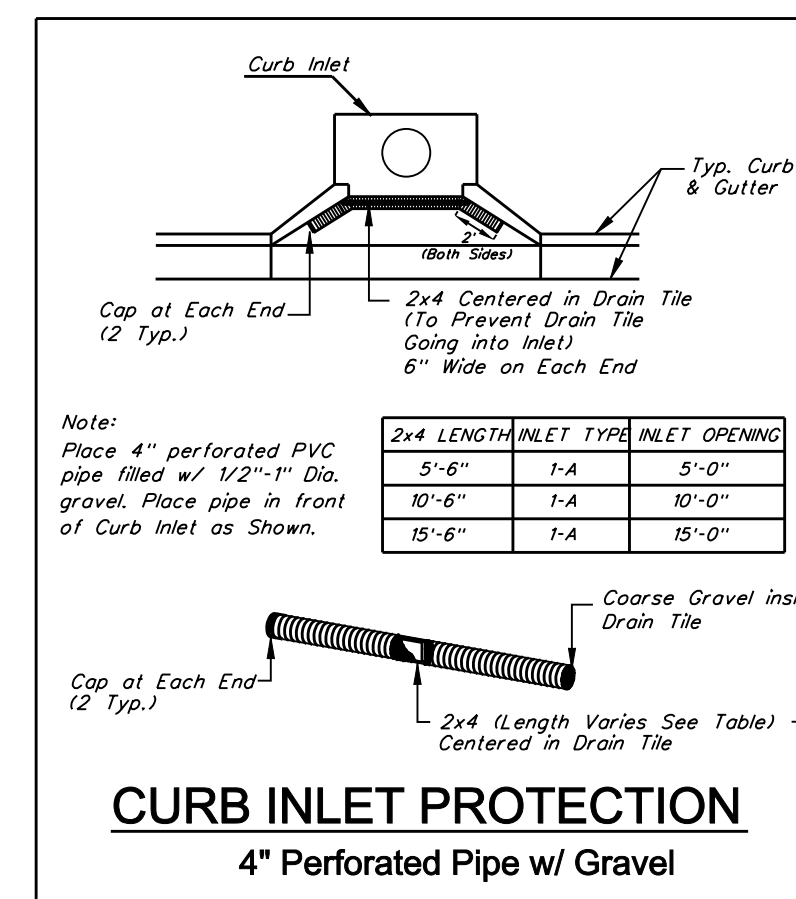
SECTION B-B

STEEL SCHEDULE

BAR	b <sub>2</sub>									WT. Lbs.	
	a <sub>1</sub>	a <sub>2</sub>	a <sub>3</sub>	W-4'-4"	W-5'-4"	W-6'-4"	W-7'-4"	W-8'-4"	b <sub>2</sub>		b <sub>3</sub>
NUMBER	4	4	2	1	3	5	7	9	6	1	1
SIZE	#4	#4	#4	#4	#4	#4	#4	#4	#4	#4	#6
LENGTH	W-3'-0"	5'-7"	6'-7"	4'-0"	6'-1"	-	-	-	1'-9"	6'-2"	4'-8"
	W-4'-0"	7'-7"	8'-7"	5'-0"	6'-1"	-	-	-	1'-9"	6'-2"	4'-8"
	W-5'-0"	9'-7"	10'-7"	6'-0"	6'-1"	-	-	-	1'-9"	6'-2"	4'-8"
	W-6'-0"	11'-7"	12'-7"	7'-0"	6'-1"	-	-	-	1'-9"	6'-2"	4'-8"
	W-7'-0"	13'-7"	14'-7"	8'-0"	6'-1"	-	-	-	1'-9"	6'-2"	4'-8"

Note: a<sub>3</sub> Bars to be Placed Approx. 2" Below Top of Inlet Cover.

W	PRE-CAST TOP SIZE	PIPE SIZE	CUL. YD. CONC.
3'-0"	3'-8" 6'-4" 7 1/2"	21" & SMALLER	0.38±
4'-0"	4'-8" 6'-4" 7 1/2"	24" & 30"	0.51±
5'-0"	5'-8" 6'-4" 7 1/2"	36" & 42"	0.64±
6'-0"	6'-8" 6'-4" 7 1/2"	48" & 54"	0.77±
7'-0"	7'-8" 6'-4" 7 1/2"	60" & 66"	0.90±



CURB INLET PROTECTION  
4" Perforated Pipe w/ Gravel

REV. 5-9-06



**STANDARD TYPE 1 CURB INLET 5'-0" OPENING**

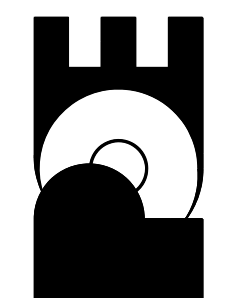
CITY ENGINEER  
**JAMES L. ARMOUR, P.E., L.S.**  
 ACTING

PROJECT NUMBER: XXX-XXXXX  
 OCA NUMBER: XXXXXX  
 DATE: MM/YY

CITY ENGINEER'S OFFICE  
 CITY HALL SEVENTH FLOOR  
 455 NORTH MAIN STREET  
 WICHITA, KANSAS 67202-1620  
 (316) 268-4501  
 (316) 268-4114 FAX

DESIGN: ABC  
 DRAWN: DEF  
 SHEET: X OF X

POE & ASSOCIATES OF KANSAS, INC.  
 CONSULTING ENGINEERS  
 5940 E. Central, Suite 200a Wichita, KS 67208-4242  
 Phone 316/695-4114 # FAX 316/695-4444



FINAL

Designed By: BLB  
 Drawn By: ELS  
 Drawing: 463-PPS14-Curb Inlet Details.dgn  
 Date: April 27, 2010

No.	Date	By	Approved	Revision