

PHASE 1 PAVING PLANS
GREENWICH OFFICE PARK SECOND ADDITION
 AND
BERKELEY SQUARE FIRST ADDITION

ADDITIONS TO THE CITY OF WICHITA
 SEDGWICK COUNTY, KANSAS
 JAMES L. ARMOUR, P.E. - CITY ENGINEER

PROJECT NO. 472-84959
 OCA 766263

PAVING CHESTERFIELD: FROM THE NORTH LINE OF 13th
 STREET TO 330' NORTH OF THE NORTH LINE OF 13th STREET

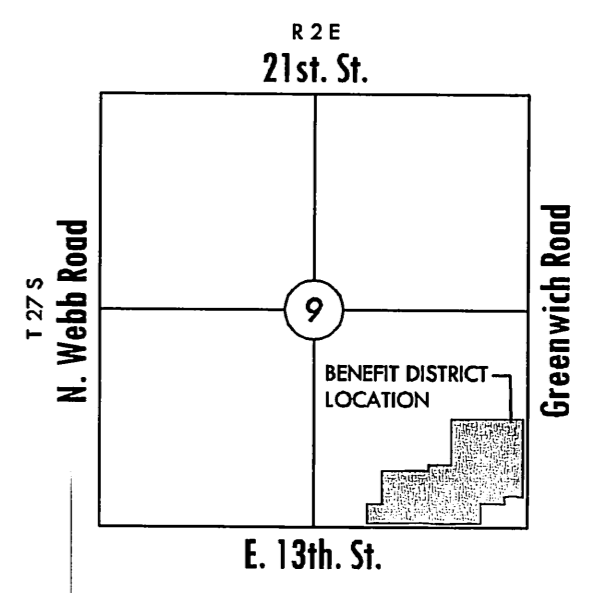
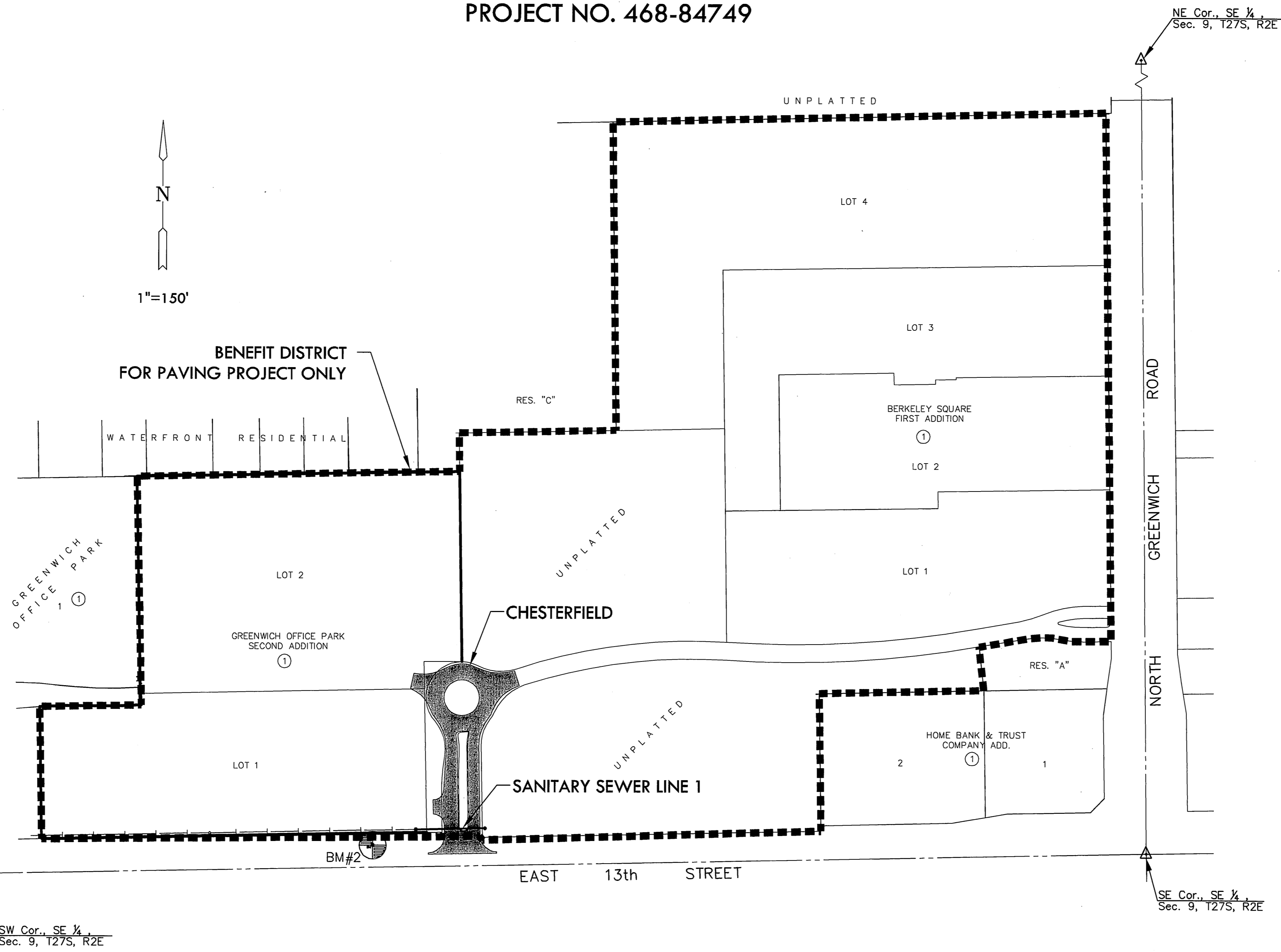
INCLUDING
 SANITARY SEWER PLANS

SANITARY SEWER LATERAL 58, MAIN 24, WIS

PROJECT NO. 468-84749

GENERAL NOTES

1. UNLESS SHOWN OR STATED OTHERWISE ON THESE DRAWINGS, MATERIALS AND CONSTRUCTION SHALL BE IN ACCORDANCE WITH CITY OF WICHITA CONCRETE PAVEMENT AND ASPHALTIC CONCRETE PAVEMENT SPECIFICATIONS.
2. CONTRACTOR WILL BE REQUIRED TO PROVIDE A MINIMUM ADVANCE NOTICE OF SEVENTY-TWO (72) HOURS TO UTILITY COMPANIES PRIOR TO STARTING ANY EXCAVATION AS FOLLOWS:
 KANSAS ONE-CALL 1-800-344-7233
 OR 687-2470 (LOCAL WICHITA)
 THE CONTRACTOR MUST NOTIFY THE FOLLOWING IN CASE OF AN EMERGENCY:
 SBC (TELEPHONE) 800-870-8390
 COX COMMUNICATIONS (CABLE) 262-0661
 WESTAR (ELECTRIC) 383-8600
 KANSAS GAS SERVICE (GAS) 832-3101
 CITY OF WICHITA WATER & SEWER MAINT. 262-6000
 BLACK HILLS ENERGY (GAS) 800-303-0357
3. THE CONTRACTOR SHALL BE RESPONSIBLE FOR PRESERVING PROPERTY IRONS. THE CONTRACTOR WILL BE REQUIRED TO RE-ESTABLISH ANY PROPERTY IRONS WHICH ARE DAMAGED OR DESTROYED BY HIS CONSTRUCTION OPERATIONS. SUCH IRONS SHALL BE RE-ESTABLISHED BY A LICENSED LAND SURVEYOR IN ACCORDANCE WITH STATE LAWS.
4. EXISTING UTILITIES AND THEIR LOCATIONS, AS SHOWN ON THE PLANS, REPRESENT THE BEST INFORMATION OBTAINABLE FOR DESIGN. LOCATION INFORMATION HAS BEEN OBTAINED FROM THE VARIOUS UTILITY COMPANIES AND IS EITHER FROM COMPANY RECORD DRAWINGS OR COMPANY PROVIDED FIELD LOCATIONS. THE PLAN LOCATIONS SHOWN ARE NOT GUARANTEED. ADDITIONAL EXISTING UTILITIES MAY ALSO BE ENCOUNTERED.
5. RUBBLE FROM THE REMOVAL OF MISCELLANEOUS STRUCTURES AND EXCESS EXCAVATION WHICH IS TO BE WASTED SHALL BE DISPOSED OF ON SITES TO BE PROVIDED BY THE CONTRACTOR. THESE SITES SHALL BE APPROVED BY THE ENGINEER AS TO SUITABILITY, APPEARANCE AND SITE LOCATION. LOCATIONS THAT, IN THE OPINION OF THE ENGINEER, WILL LEAVE AN UNSIGHTLY APPEARANCE WILL NOT BE APPROVED. ALL DISPOSAL SITES MUST BE APPROVED BY THE KANSAS DEPARTMENT OF HEALTH AND FLOOD PLAIN WOULD REQUIRE A KANSAS STATE BOARD OF AGRICULTURE PERMIT. ANY MATERIAL DUMPED IN WATERS OF THE UNITED STATES OR WETLANDS IS SUBJECT TO U.S. CORPS OF ENGINEERS PERMITTING REGULATIONS. ANY MATERIAL BURIED OR STOCKPILED BEYOND APPROVED CONSTRUCTION LIMITS WOULD REQUIRE ADDITIONAL ARCHAEOLOGICAL INVESTIGATIONS UNLESS BURIED IN A PREVIOUSLY APPROVED BORROW LOCATION.
6. THIS PROJECT INCLUDES A CERTAIN AMOUNT OF ROLL TYPE CURB CONSTRUCTION. ROLL CURBS SHALL BE DEPRESSED THROUGH ALL DRIVEWAY OPENINGS WHEN SUCH DRIVES ARE CONSTRUCTED AS A PART OF THE PROJECT. NO MORE THAN 2 DRIVES 20 FEET IN WIDTH OR EQUIVALENT COMBINATIONS THEREOF ARE TO BE CONSTRUCTED WITH THIS PROJECT.
7. TRANSITION CURB FROM FULL HEIGHT COMBINATION CURB AND GUTTER TO ROLL TYPE COMBINATION CURB AND GUTTER IS TO BE PAID AS BID FOR LINEAL FEET COMBINED CURB AND GUTTER (3 5/8" ROLL).
8. A SAW CUT OF AT LEAST ONE-HALF THE DEPTH OF THE EXISTING SURFACE COURSES OR ONE-FOURTH THE DEPTH OF THE EXISTING TOTAL PAVEMENT THICKNESS SHALL BE PROVIDED AT LOCATIONS WHERE PROPOSED CONSTRUCTION ABUTS AN EXISTING SURFACE OR PAVEMENT FOR WHICH PARTIAL REMOVAL OF THAT SURFACE OR PAVEMENT IS REQUIRED. SAW JOINT TO FACILITATE REMOVAL WITHIN THREE (3) FEET OF EXISTING JOINTS WILL NOT BE PERMITTED AND FOR SUCH INSTANCES THE LIMITS OF REMOVAL SHALL EXTEND TO THE EXISTING JOINT. SUCH SAW CUTS WILL NOT BE PAID FOR DIRECTLY AND THIS COST SHALL BE CONSIDERED AS SUBSIDIARY TO THE REMOVAL OF SURFACE OR PAVEMENT.
9. CONTRACTOR SHALL RESEED AND MULCH ALL DISTURBED AREAS. COST SHALL BE CONSIDERED SUBSIDIARY TO SITE RESTORATION.
10. DEVELOPER/OWNER FOR THIS PROJECT IS:
 LEGEND SENIOR LIVING
 150 N MARKET
 WICHITA, KANSAS, 67202
 CONTACT - GEORGE E. LAHAM, MANAGER
 316-292-3950



INDEX TO DRAWINGS

SHEET NO.	DESCRIPTION
1	TITLE SHEET
2-9	DETAILS
10-11	CHESTERFIELD
12	ROUNDBOUT DIMENSIONS
13	SANITARY SEWER
14	MANHOLE DETAILS
15	BUBBLE MAP
16	EROSION CONTROL
17-21	BMP DETAILS
22-24	CROSS SECTIONS
25-26	PLATS

BENCHMARKS

- BM#1 Chiseled square on top of curb at north end of 2nd island north of 13th St. N. on Veranda, 461' north of 13th St. and centerline Veranda.
 Elev.=1387.03 NAVD 88
- BM#2 Railroad spike in north side of power pole, 930' east of centerline Veranda and 39' north of centerline 13th St. N.
 Elev.=1399.01 NAVD 88

EARTHWORK SUMMARY

EXCAVATION	700 C.Y.
COMPACTED FILL (95% Density)	300 C.Y.

NOTE:
 CONTRACTOR IS RESPONSIBLE FOR
 WASTING EXCESS MATERIAL OFFSITE.

MKEC
 ENGINEERING
 CONSULTANTS, INC.
 411 N. WEBB ROAD
 WICHITA, KS. 67206
 316-684-9600

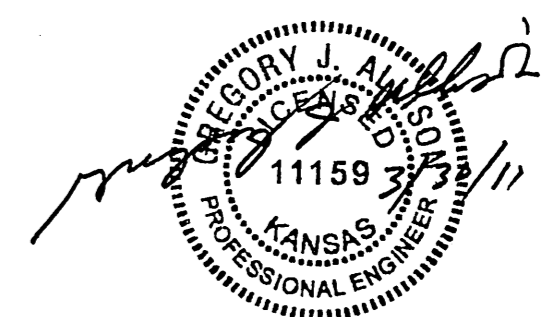
PHASE 1 PAVING PLANS
**GREENWICH OFFICE PARK SECOND
 ADDITION**
BERKELEY SQUARE FIRST ADDITION

TITLE SHEET
 SHEET TITLE
 472-84959
 468-84749
 PROJECT NUMBERS

DFL | KKL | DFL
 DESIGNED | DRAWN | CHECKED

ISSUED
 March 2011
 REVISED

SHEET NO.
 1 of 26



PLOTTED: Wednesday, March 30, 2011 @ 09:37AM

J:\PROJECTS\2010\10356 - REGENT PARK - ALF - 1001060356\CAD\CIVIL\PAV\COM\10356_ET.DWG