

GENERAL NOTES

Handrails shall be galvanized in accordance with either A.S.T.M. A123 or A153 Specifications as applicable.

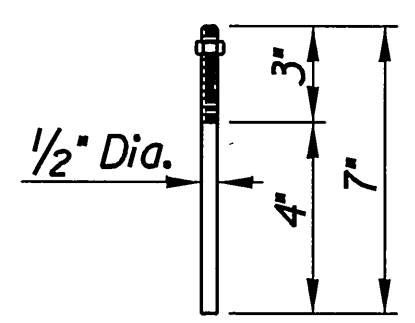
All nuts, washers and bolts shall be stainless steel.

Structural Tubing shall conform to A500 Gr. B Specifications. Plates, bars and angles shall conform to ASTM A709 Gr. 36 Specifications.

Material and construction shall conform to the structural welding code A.W.S. D1.1-01.

Shop details must be submitted and approved by the Engineer.

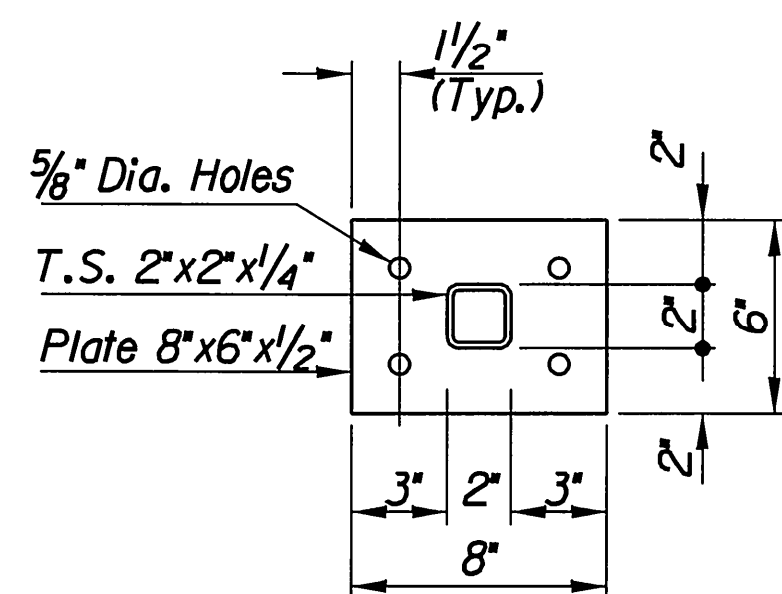
The costs of all materials and incidentals required to furnish, fabricate and install the handrail shall be included in the lump sum price bid for "Pedestrian Handrail".



Galvanized (ASTM A153)

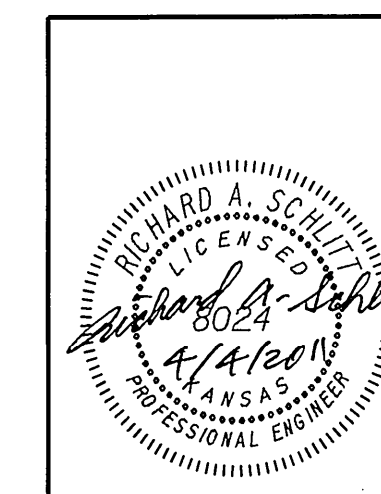
(May substitute expandable anchor bolts when approved by the Engineer)

ANCHOR BOLT



TYPE B BASE PLATE
(4 Required)

Plotted By: \$\$USERNAME\$\$ Plotted: \$\$\$SYTIME\$\$\$
File: \$\$\$DGN\$PEC\$\$\$



No.	Revision	By	Date
PEDESTRIAN HANDRAIL DETAILS			
JAMES L. ARMOUR, P.E. - CITY ENGINEER CITY OF WICHITA PROJECT NO. 468-84741			
PEC PROFESSIONAL ENGINEERING CONSULTANTS, P.A. 303 SOUTH TOPEKA WICHITA, KS 67202 316-262-2691 www.pec1.com			
Designed by	R.A.S., R.J.M.	Job No.	35-04274-5-042
Drawn by	C.P., W.L.L.	Date	APRIL 2011
			Sht. 13 of 13