

WL No. 1, Bl. Sta. 35+77.28, 20' Lt. =
 WL No. 1, Sta. 26+51.60
 1 - 8" DI CL MJ Tee
 1 - 8" Valve Assembly (S)
 Top of Valve Box = Match Existing
 13' - 8" DI CL Pipe (S)
 1 - 8" 90° DI CL MJ Bend (Rotated)
 5' - 8" DI CL Pipe (W)
 1 - 8" 90° DI CL MJ Bend (Rotated)
 Connect to Existing 8" PVC Pipe (S)
 1 - 8" MJ Cap (N)

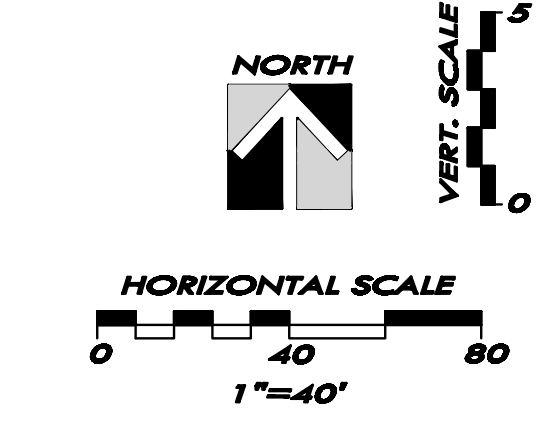
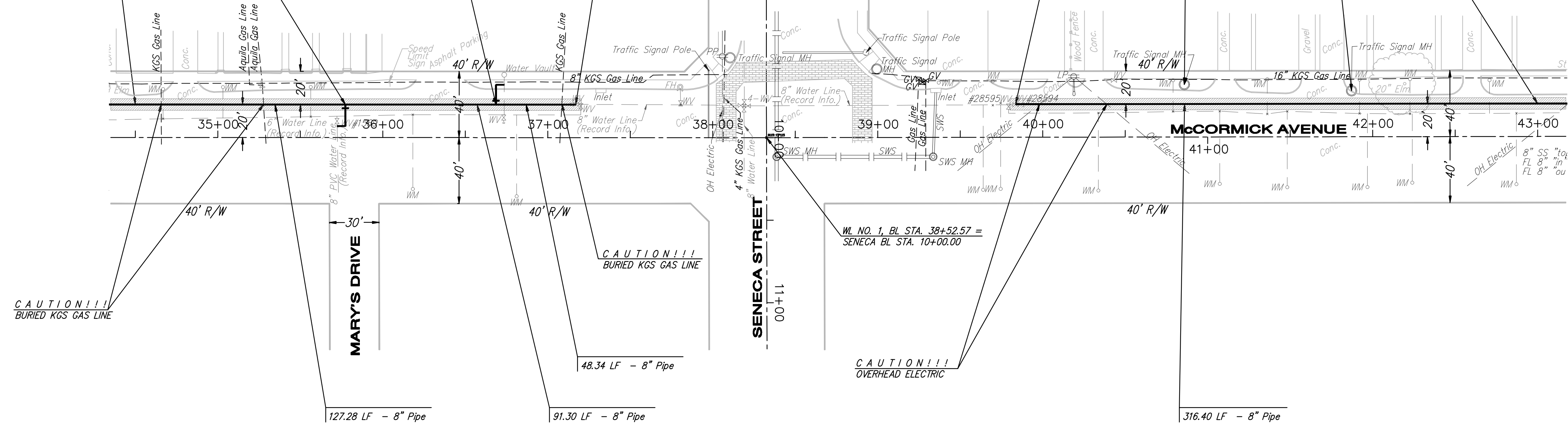
WL No. 1, Bl. Sta. 36+68.58, 20' Lt. =
 WL No. 1 Sta. 27+42.90
 1 - 2" Service Outlet Assembly (N)
 12.00 - 2" Pipe (N)
 1 - 2" 90° Bend (Rotated)
 5.00 - 2" Pipe (E)
 1 - 2" 90° Bend (Rotated)
 Connect to Existing 2" PVC (N)
 1 - 2" Cap (S)

WL No. 1, Bl. Sta. 37+16.92, 20' Lt. =
 WL No. 1, Sta. 27+91.24
 Existing Water Line
 Remove Existing 2" Blowoff Assembly
 Connect to Existing 8" Pipe
 Provide Couplers and Adapters as Required
 1 - 6" MJ Plug (S) in Existing Valve

WL No. 1, Bl. Sta. 39+83.60, 20' Lt. =
 WL No. 1, Sta. 30+57.93
 Existing Water Line
 Remove Existing 8" Cap
 Connect to Existing 8" Pipe
 Provide Couplers and Adapters as Required
 1 - 2" IPT Plug in Existing Valve (S)

WL No. 1, Bl. Sta. 43+00, 20' Lt. =
 WL No. 1 Sta. 33+74.32
 Match Line, See Sheet 8 for Continuation.

WL No. 1, Bl. Sta. 34+50, 20' Lt. =
 WL No. 1, Sta. 25+24.32
 Match Line, See Sheet 6 for Continuation.



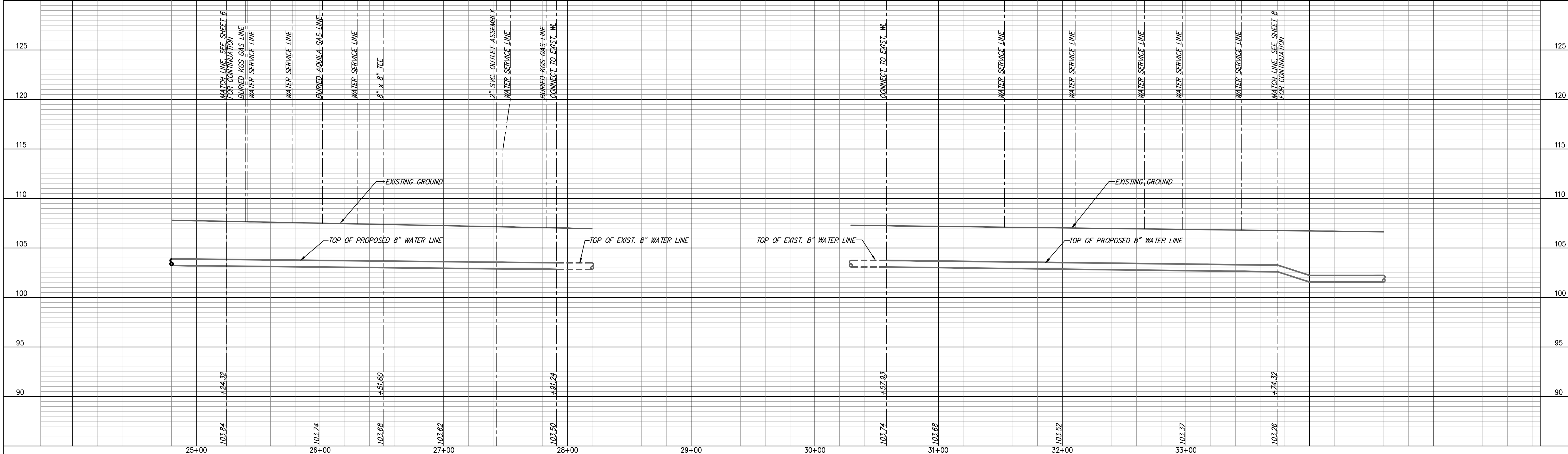
LEGEND

| | |
|---|------------------------|
| ⊕ | UTILITY POLE |
| ⊙ | LIGHT POLE |
| ⊥ | DEAD MAN |
| ⊙ | WATER METER |
| ⊕ | WATER VALVE |
| ⊕ | GAS VALVE |
| ⊙ | SANITARY SEWER MANHOLE |
| ⊙ | STORM SEWER MANHOLE |

- NOTES:
- UNLESS OTHERWISE INDICATED, DIMENSIONS ARE MEASURED TO CENTERLINE OF FITTINGS IN PLAN VIEW AND TOP OF PIPE IN PROFILE VIEW.
 - WL NO. 1 BASELINE = CENTERLINE OF MCCORMICK AVENUE RIGHT-OF-WAY.
 - REFER TO SHEET 2, NOTE NO. 8, FOR DIRECTIONAL DRILLING REQUIREMENTS.

WATER LINE NO. 1

REMOVE & REPLACE CONCRETE PAVEMENT IN KIND, THIS SHEET = 590 LF



WATER LINE NO. 1
 PLAN AND PROFILE

McCormicks Water Main Replacement

City of Wichita, Sedgwick County, Kansas

| PROJECT NO. | DATE | BY | REVISIONS |
|-------------|---------|-----|-----------|
| 06-228 | 2-15-07 | DMS | |
| | | DAS | |
| | | GRY | |
| | | | |

YOUNG & ASSOCIATES, P.A.
 Civil and Environmental Engineers
 100 S. Georigle, Derby, KS 67037
 Tele: (316)788-2552 Fax: (316)788-4408 Email: young@yandemah.com