

WL No. 1, BL Sta. 43+00, 20' Lt. =
 WL No. 1, Sta. 33+74.32
 Match Line, See Sheet 7 for Continuation.

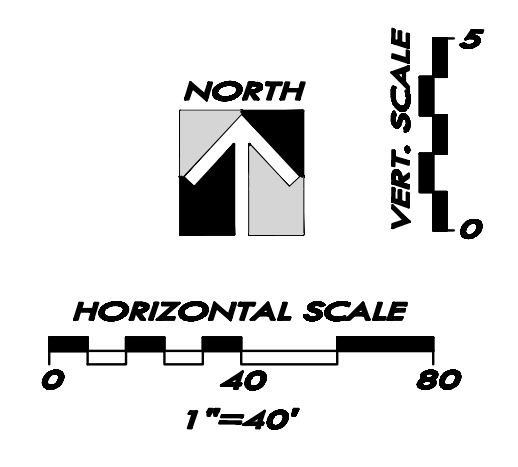
CAUTION !!!
 Overhead Electric

CAUTION !!!
 Buried KGS GAS LINE

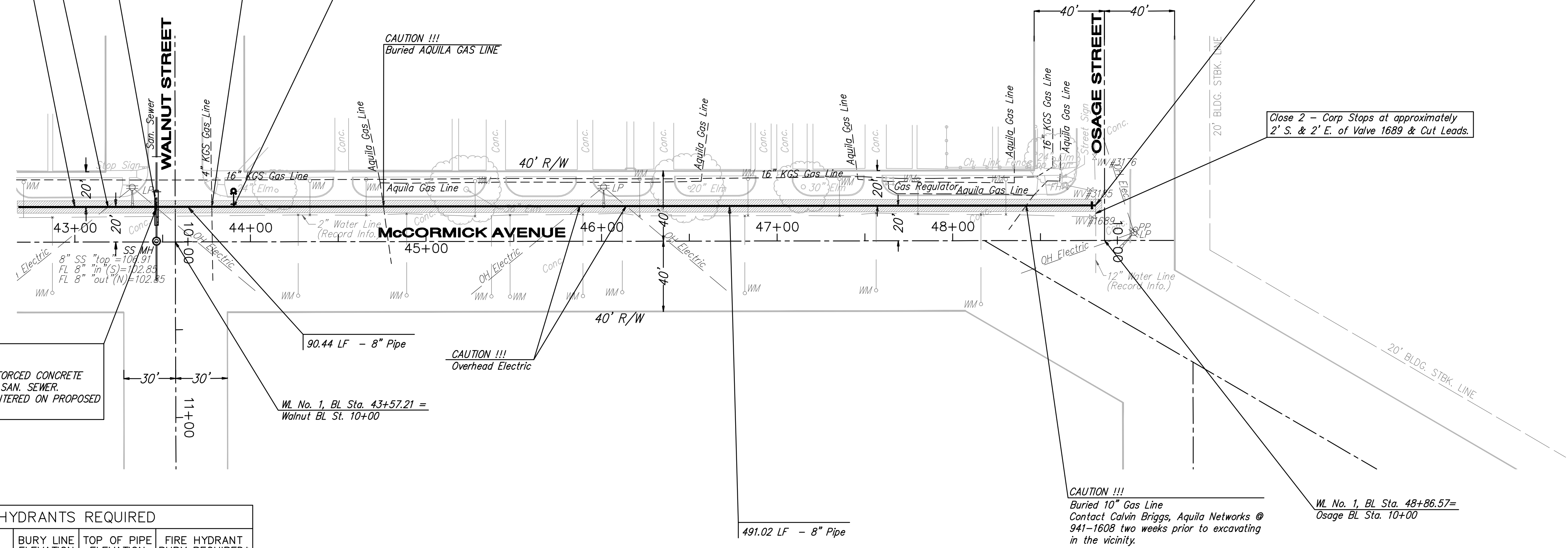
CAUTION !!!
 Overhead Electric

WL No. 1, BL Sta. 43+90.44, 20' Lt. =
 WL No. 1 Sta. 34+64.77
 1 - Fire Hydrant Assembly
 L = 9'
 Top of Valve Box Elev. = Match Exist.
 FH Bury Elev. = 107.00

WL No. 1, BL Sta. 48+81.46, 20' Lt. =
 WL No. 1, Sta. 39+55.78.
 Existing 12" Water Line
 1 - 12" x 8" Tapping Sleeve
 1 - 12" Tapping Valve
 1 - 6" Valve Box
 (To be furnished and set by
 City of Wichita Water Department)



- LEGEND**
- ⊕ PP UTILITY POLE
 - ⊕ LP LIGHT POLE
 - ↓ DM DEAD MAN
 - ⊙ WM WATER METER
 - ⊗ WV WATER VALVE
 - ⊗ GV GAS VALVE
 - ⊙ SS MH SANITARY SEWER MANHOLE
 - ⊙ SWS MH STORM SEWER MANHOLE



CAUTION!!!
 8" SANITARY SEWER
 CONSTRUCT 20 LF REINFORCED CONCRETE
 ENCASEMENT ON EXIST. SAN. SEWER.
 ENCASEMENT TO BE CENTERED ON PROPOSED
 8" WATER LINE.

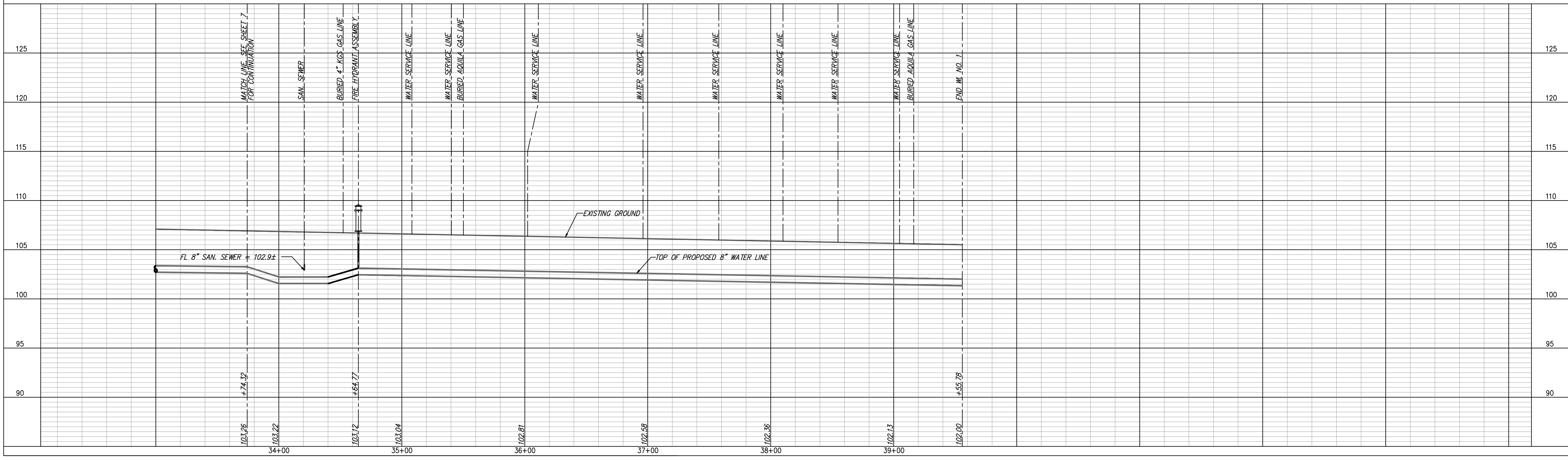
FIRE HYDRANTS REQUIRED			
STATION	BURY LINE ELEVATION	TOP OF PIPE ELEVATION	FIRE HYDRANT BURY REQUIRED*
WL NO. 1, STA. 34+64.77	107.00	103.12	4.5'

(FOR FIRE HYDRANT ASSEMBLY, SEE DETAIL, SHEET 27)

- NOTES:**
- UNLESS OTHERWISE INDICATED, DIMENSIONS ARE MEASURED TO CENTERLINE OF FITTINGS IN PLAN VIEW AND TOP OF PIPE IN PROFILE VIEW.
 - WL NO. 1 BASELINE = CENTERLINE OF MCCORMICK AVENUE RIGHT-OF-WAY.
 - REFER TO SHEET 2, NOTE NO. 8, FOR DIRECTIONAL DRILLING REQUIREMENTS.

WATER LINE NO. 1

REMOVE & REPLACE CONCRETE PAVEMENT IN KIND, THIS SHEET = 585 LF



**WATER LINE NO. 1
 PLAN AND PROFILE**

McCormicks Water Main Replacement

City of Wichita, Sedgwick County, Kansas

PROJECT NO.	DATE	DESIGNED	CHECKED	APPROVED
06-228	2-15-07	DMS	DAS	CRY

YOUNG & ASSOCIATES, P.A.
 Civil and Environmental Engineers
 100 S. Georgia, Derby, KS 67037
 tele: (316) 788-2552 fax: (316) 788-4408 email: young@yandemah.com

Copyright 2006, by Young & Associates, P.A., all rights reserved. Prepared in the United States of America. This drawing is the property of Young & Associates, P.A. and may not be reproduced in any form without the specific written permission of Young & Associates, P.A. This plan and design is the exclusive property of Young & Associates, P.A. The liability of the engineer or engineer-in-charge shall not constitute a subcontract.