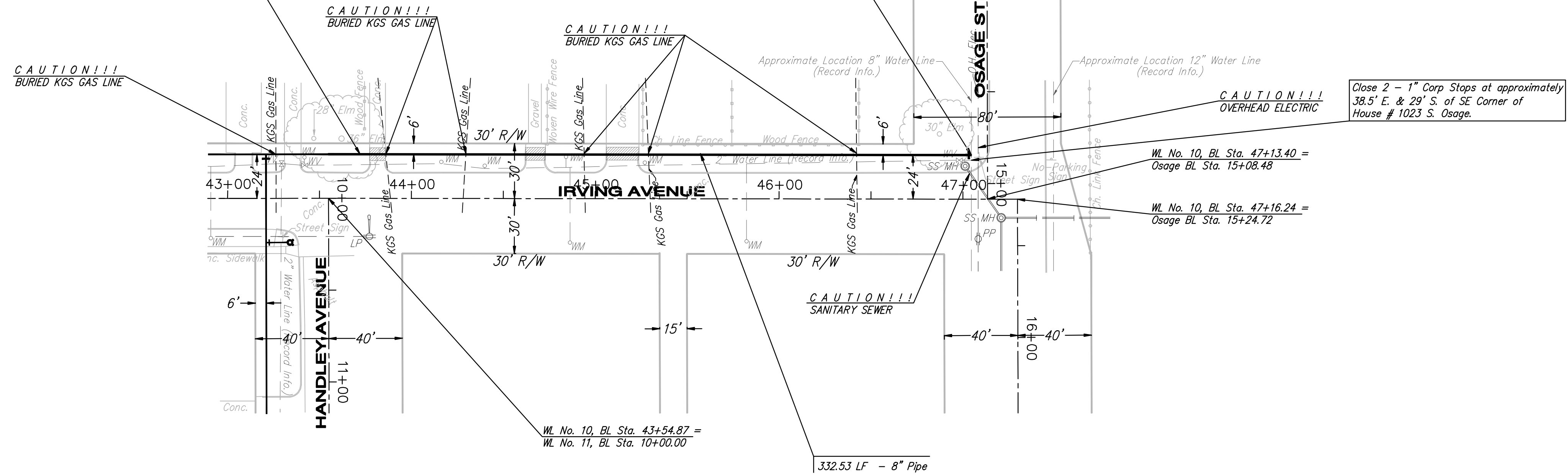
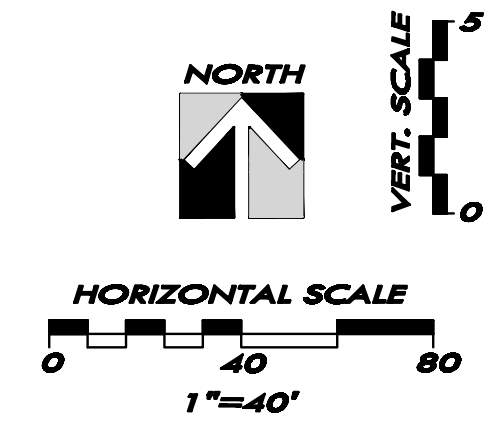


WL No. 10, BL Sta. 43+72.05, 24' Lt. =
 WL No. 10, Sta. 8+00
 Match Line, See Sheet 24 for Continuation.

WL No. 10, BL Sta. 47+04.59, 24.00' Lt. =
 WL No. 10, Sta. 11+32.53
 Existing 8" Water Line
 1 - 8" x 8" Tapping Sleeve
 1 - 8" Tapping Valve
 1 - 6" Valve Box
 (To be furnished and set by City of Wichita
 Water Department)
 Top of Valve Box = Match Existing



LEGEND

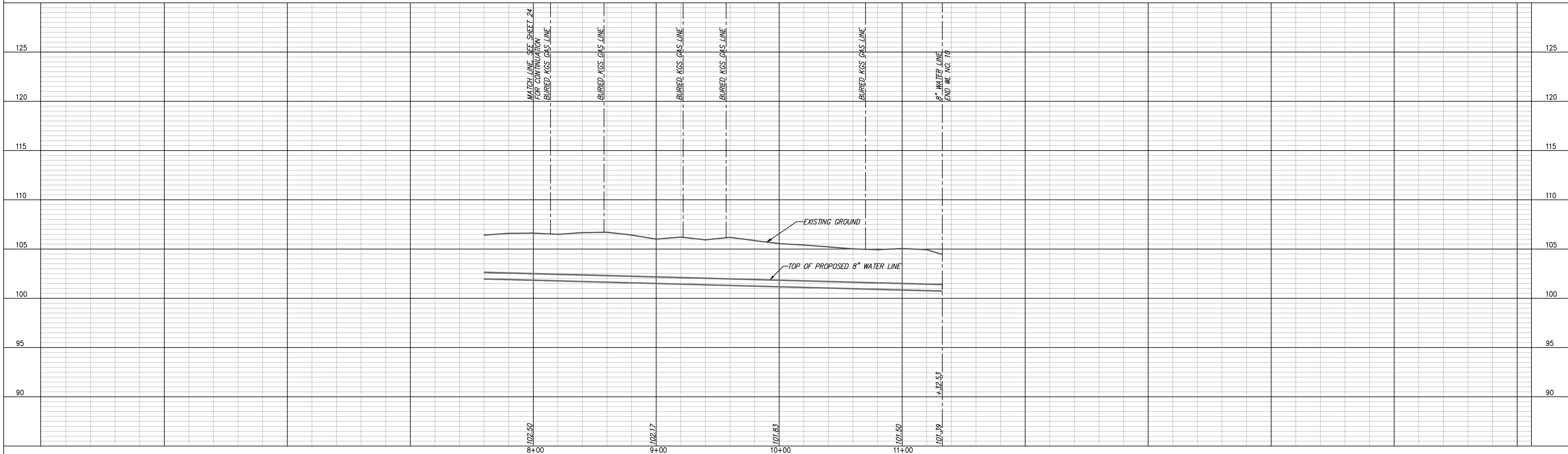
⊕	UTILITY POLE
⊙	LIGHT POLE
↓	DEAD MAN
⊙	WATER METER
⊗	WATER VALVE
⊗	GAS VALVE
⊙	SANITARY SEWER MANHOLE
⊙	STORM SEWER MANHOLE

NOTES:

- UNLESS OTHERWISE INDICATED, DIMENSIONS ARE MEASURED TO CENTERLINE OF FITTINGS IN PLAN VIEW AND TOP OF PIPE IN PROFILE VIEW.
- WL NO. 10 BASELINE = CENTERLINE OF IRVING AVENUE RIGHT-OF-WAY.
- REFER TO SHEET 2, NOTE NO. 8, FOR DIRECTIONAL DRILLING REQUIREMENTS.

WATER LINE NO. 10

REMOVE & REPLACE CONCRETE DRIVE IN KIND, THIS SHEET = 37 LF



WATER LINE NO. 10
 PLAN AND PROFILE

McCormicks Water Main Replacement

City of Wichita, Sedgwick County, Kansas

PROJECT NO.	DATE	BY	REVISIONS
06-228	2-15-07	DMS	

YOUNG & ASSOCIATES, P.A.
 Civil and Environmental Engineers
 100 S. Geologie, Derby, KS 67037
 Tele: (316) 788-2552 Fax: (316) 788-4408 Email: young@yandem.com

Copyright 2006, by Young & Associates, P.A., all rights reserved. Prepared in the United States of America. This drawing is the property of Young & Associates, P.A. and may not be reproduced in any form without the specific written permission of Young & Associates, P.A. The accuracy of the original or copies thereof does not constitute a warranty.