

**UTILITIES**

AT&T, Wichita Central Unit  
154 N. Broadway Ave. Rm 210  
Wichita, Ks. 67202  
John Fagan (316) 268-2102

City of Goddard  
118 N. Main St.  
Goddard, Ks. 67052  
Dept. of Public Works  
Justin Givens (316) 794-2441

Cox Communications  
901 George Washington Blvd.  
Wichita, Ks. 67211  
Marc Henderson (316) 260-7745

Kansas Gas Service  
1021 E. 26th St. N.  
Wichita, Ks. 67219  
Jim Coe (316) 832-3126

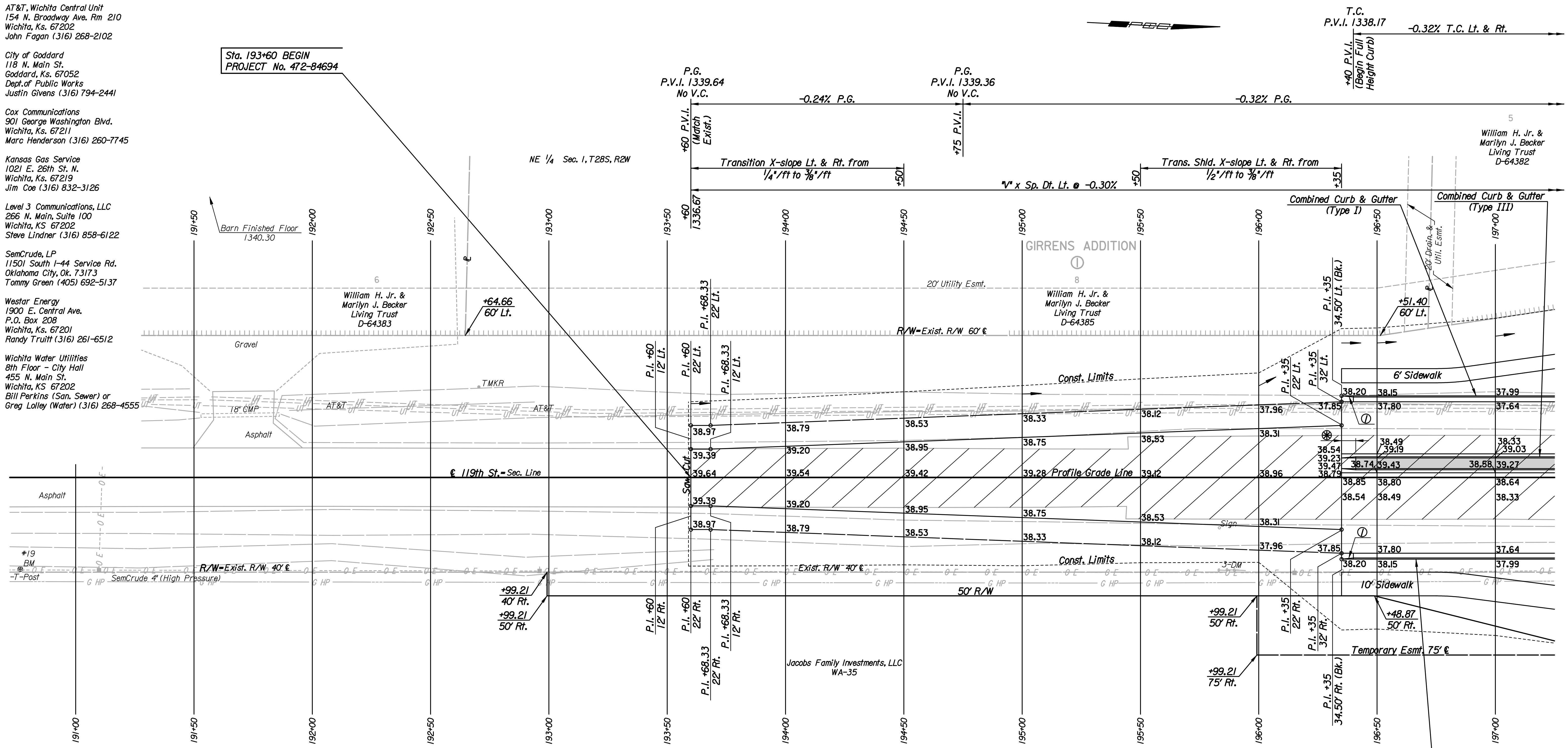
Level 3 Communications, LLC  
266 N. Main, Suite 100  
Wichita, KS 67202  
Steve Lindner (316) 858-6122

SemCrude, LP  
11501 South I-44 Service Rd.  
Oklahoma City, Ok. 73173  
Tommy Green (405) 692-5137

Westar Energy  
1900 E. Central Ave.  
P.O. Box 208  
Wichita, Ks. 67201  
Randy Truitt (316) 261-6512

Wichita Water Utilities  
8th Floor - City Hall  
455 N. Main St.  
Wichita, KS 67202  
Bill Perkins (San. Sewer) or  
Greg Lalley (Water) (316) 268-4555

Sta. 193+60 BEGIN  
PROJECT No. 472-84694



REMOVAL OF EXISTING STRUCTURES *		
STATION	SIDE	ITEM
195+83	Rt.	Sign

\* For Information Only

Note: Elevations shown along Curb and Gutter are to High Edge and Top of Curb.

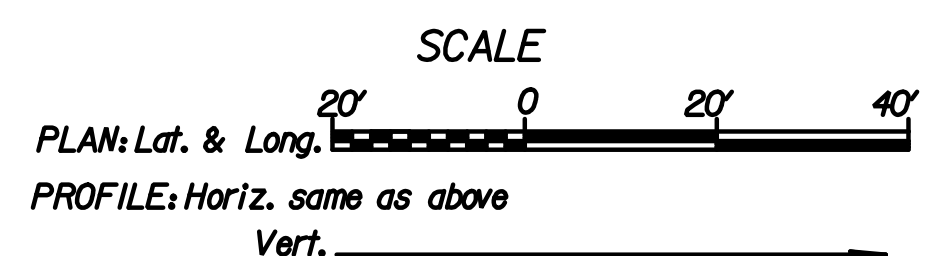
**LEGEND**

Pavement Removal

**Utilities**

Gas SemCrude, LP  
Power Westar Energy  
Telephone AT&T

- ① 5' transition from Combined Curb & Gutter (Type I) to no curb.
- ⊗ 6' transition from Combined Curb & Gutter (Type III) to no curb.

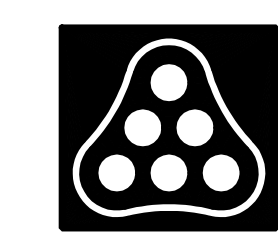


- E 1/4 Cor. Sec. 1, T28S, R2W
- Found 3/4" IP 8"± below Surface
  - N 1,669,542.7123 E 1,607,699.3116
  - Center Traveled Way 119th
  - Chiseled \*\* in top center S end Culvert
  - Chiseled \*\* in top center N end Culvert
  - Center Field Entrance to W
  - 7, 3 Nails in S face Power Pole

1.00'± W  
34.76' WNW  
45.66' NW  
23.00'± N  
38.59' E

BM\*19 Set Chiseled \*\* W end N side of Median Island at Pawnee E of 119th  
82.11' Rt. @ Sta. 199+94.90 Elev. = 1337.77

BM\*19 Set \*\* Post Adjacent to Drive, House #2525  
S. 119th St. W. and 37'± E of center 119th  
38.70' Rt. @ Sta. 190+76.59 Elev. = 1339.55



No.	Revision	By	Date
119TH ST. <b>PLAN</b> STA. 191+00 TO STA. 197+00 JAMES L. ARMOUR, P.E. - CITY ENGINEER CITY OF WICHITA PROJECT NO. 472-84694			
<b>Professional Engineering Consultants, P.A.</b> 303 S. TOPEKA - WICHITA, KANSAS 67202 316-262-2691 • FAX 316-262-3003			
Designed by	JPS	Job No.	08208
Drawn by	SVB	Date	Sept., 2010
			Sheet 5 of 149

Plotted By: svb Date: 1/20/2011 11:41:10 AM  
 FILE: I:\2008\08208\Plan\08208-PL191.dgn