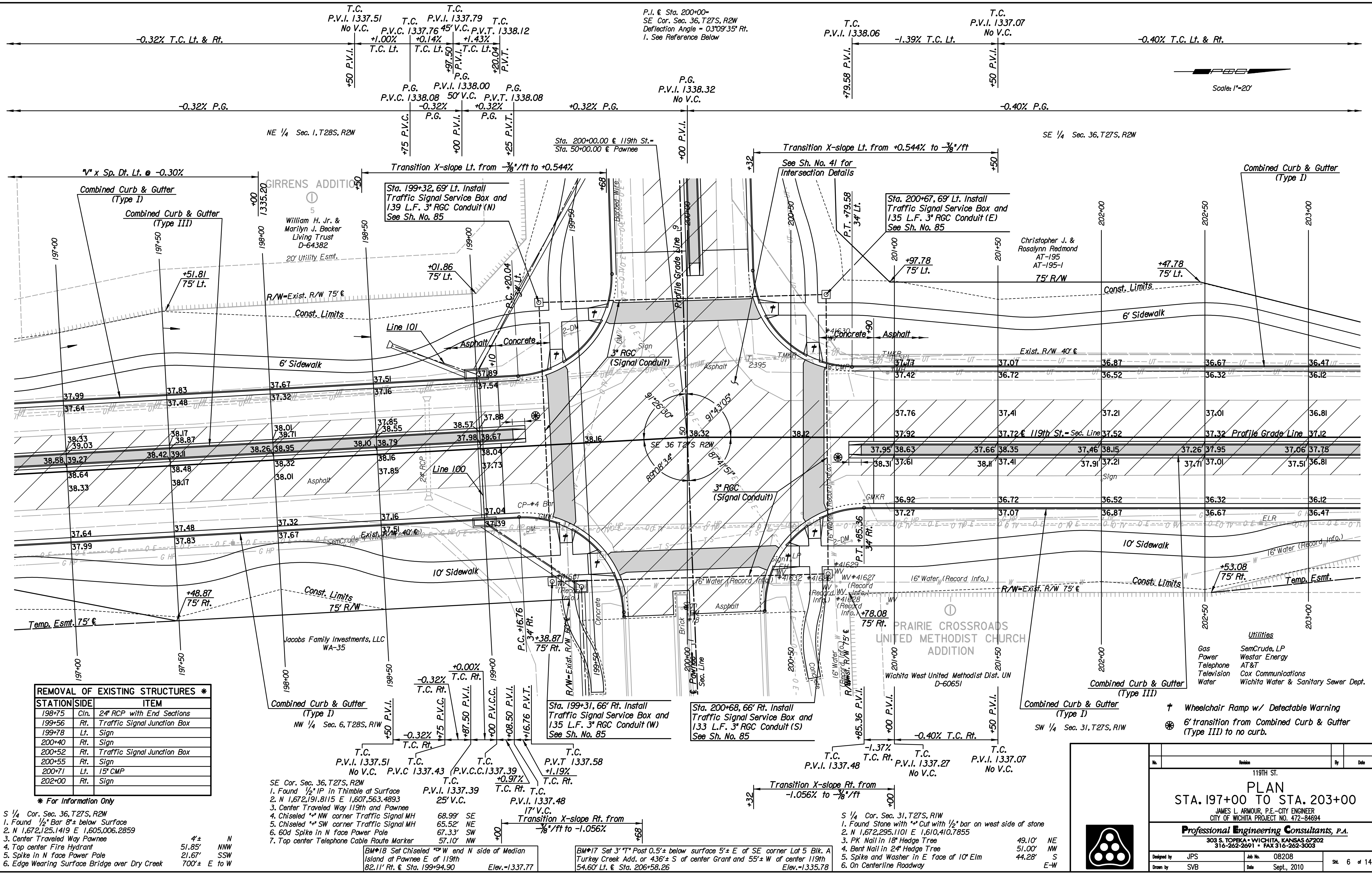


Plotted By: svb Date: 1/20/2011 11:19:27 AM
 FILE: I:\2008\08208\Plan\08208-PL197.dgn



REMOVAL OF EXISTING STRUCTURES *	
STATION/SIDE	ITEM
198+75	Cln. 24" RCP with End Sections
199+56	Rt. Traffic Signal Junction Box
199+78	Lt. Sign
200+40	Rt. Sign
200+52	Rt. Traffic Signal Junction Box
200+55	Lt. Sign
200+71	Lt. 15" CMP
202+00	Rt. Sign

- * For Information Only
- S 1/4 Cor. Sec. 36, T27S, R2W
 1. Found 1/2" Bar 8" below Surface
 2. N 1,672,125,1419 E 1,605,006,2859
 3. Center Traveled Way Pawnee
 4. Top center Fire Hydrant
 5. Spike in N face Power Pole
 6. Edge Wearing Surface Bridge over Dry Creek
- 4± N
 51.85' NNW
 21.67' SSW
 700± E to W

- SE Cor. Sec. 36, T27S, R2W
 1. Found 1/2" IP in Thimble at Surface
 2. N 1,672,191,8115 E 1,607,563,4893
 3. Center Traveled Way 119th and Pawnee
 4. Chiseled ** NW corner Traffic Signal MH
 5. Chiseled ** SW corner Traffic Signal MH
 6. 60d Spike in N face Power Pole
 7. Top center Telephone Cable Route Marker
- 68.99' SE
 65.52' NE
 67.33' SW
 57.10' NW
- BM*18 Set Chiseled ** W end N side of Median Island at Pawnee E of 119th
 82.11' Rt. @ Sta. 199+94.90 Elev.=1337.77

- SE 1/4 Cor. Sec. 31, T27S, R1W
 1. Found Stone with ** Cut with 1/2" bar on west side of stone
 2. N 1,672,295,1101 E 1,610,410,7855
 3. PK Nail in 18" Hedge Tree
 4. Bent Nail in 24" Hedge Tree
 5. Spike and Washer in E face of 10" Elm
 6. On Centerline Roadway
- 49.10' NE
 51.00' NW
 44.28' S
 E-W
- BM*17 Set 3" ** Post 0.5' below surface 5'± E of SE corner Lot 5 Blk. A Turkey Creek Add. or 436'± S of center Grant and 55'± W of center 119th
 54.60' Lt. @ Sta. 206+58.26 Elev.=1335.78

119TH ST.
PLAN
 STA. 197+00 TO STA. 203+00

JAMES L. ARMOUR, P.E.—CITY ENGINEER
 CITY OF WICHITA PROJECT NO. 472-84894

Professional Engineering Consultants, P.A.
 303 S. TOPKA • WICHITA, KANSAS 67202
 316-262-2691 • FAX 316-262-3003

Designed by: JPS Job No.: 08208
 Drawn by: SVB Date: Sept., 2010 Sh. 6 of 149