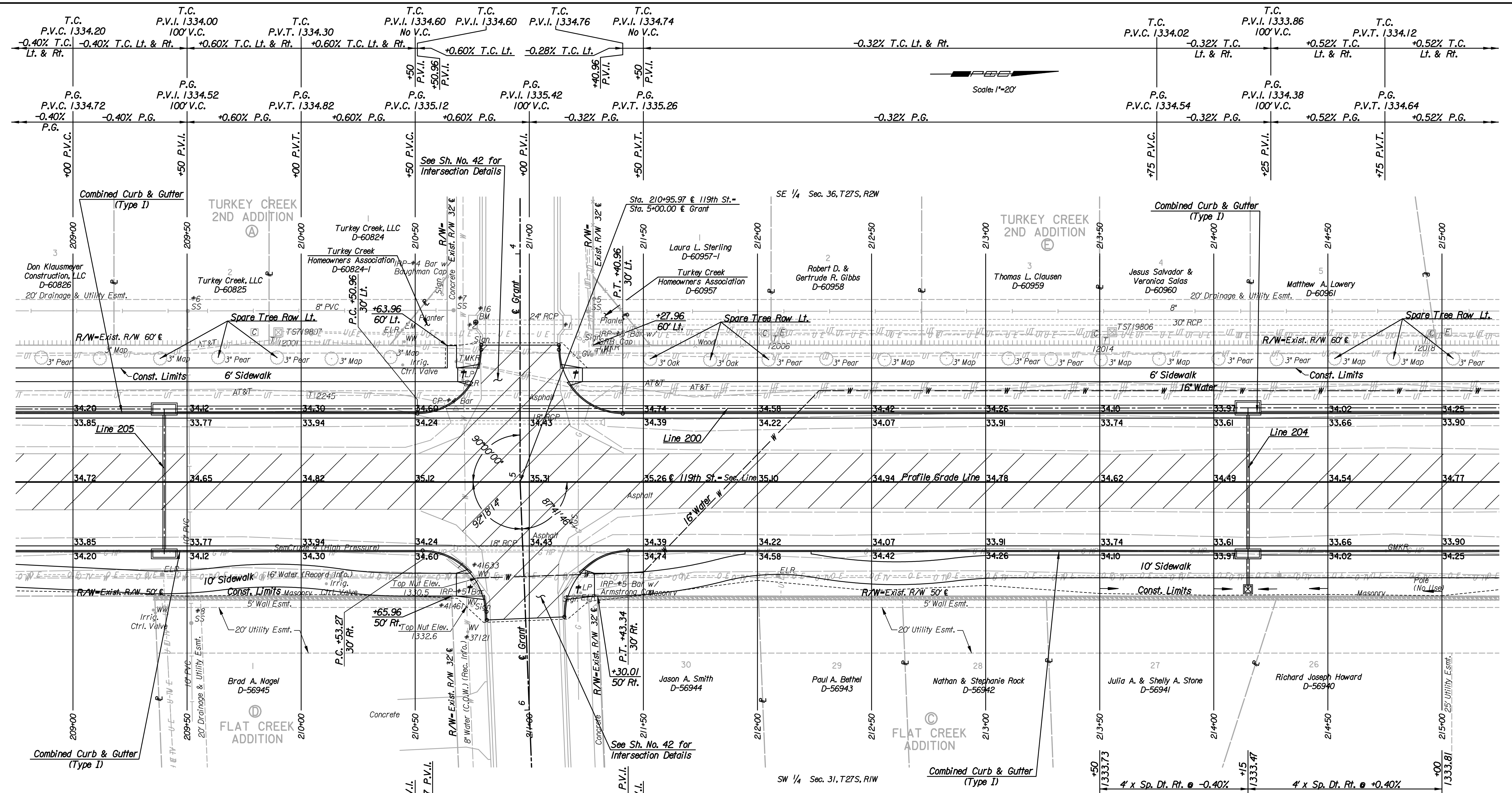


Plotted By: svb Date: 1/20/2011
 FILE: I:\2008\08208\Plan\08208-PL209.dgn



REMOVAL OF EXISTING STRUCTURES *		
STATION	SIDE	ITEM
210+75	Lt.	Sign
210+75	Rt.	Sign
210+95	Lt.	18" RCP with End Sections
210+97	Rt.	18" RCP with End Sections
211+19	Rt.	Sign
214+87	Rt.	Pole

* For Information Only

BM#16 Set Chiseled "M" Top center front of Storm Sewer Curb Inlet at SW corner of 119th and Grant 70.07' Lt. & Sta. 210+76.55 Elev. = 1335.98

BM#15 Set Chiseled "M" Top Headwall S side of Drive 45'± N of center of Drive, House #2138, 32'± E of center 119th 30.81' Rt. & Sta. 216+37.68 Elev. = 1334.31

- Utilities
- Gas: Kansas Gas Service
 - Gas: SemCrude, LP
 - Power: Westar Energy
 - Sanitary Sewer: Wichita Water & Sanitary Sewer Dept.
 - Telephone: AT&T
 - Television: Cox Communications
 - Water: Wichita Water & Sanitary Sewer Dept.

† Wheelchair Ramp w/ Detectable Warning

No.	Revision	By	Date

119TH ST.
PLAN
 STA. 209+00 TO STA. 215+00
 JAMES L. ARMOUR, P.E. - CITY ENGINEER
 CITY OF WICHITA PROJECT NO. 472-84694

Professional Engineering Consultants, P.A.
 303 S. TOPEKA - WICHITA, KANSAS 67202
 316-262-2691 • FAX 316-262-3003

Designed by	JPS	Job No.	08208
Drawn by	SVB	Date	Sept., 2010

Sheet 8 of 149