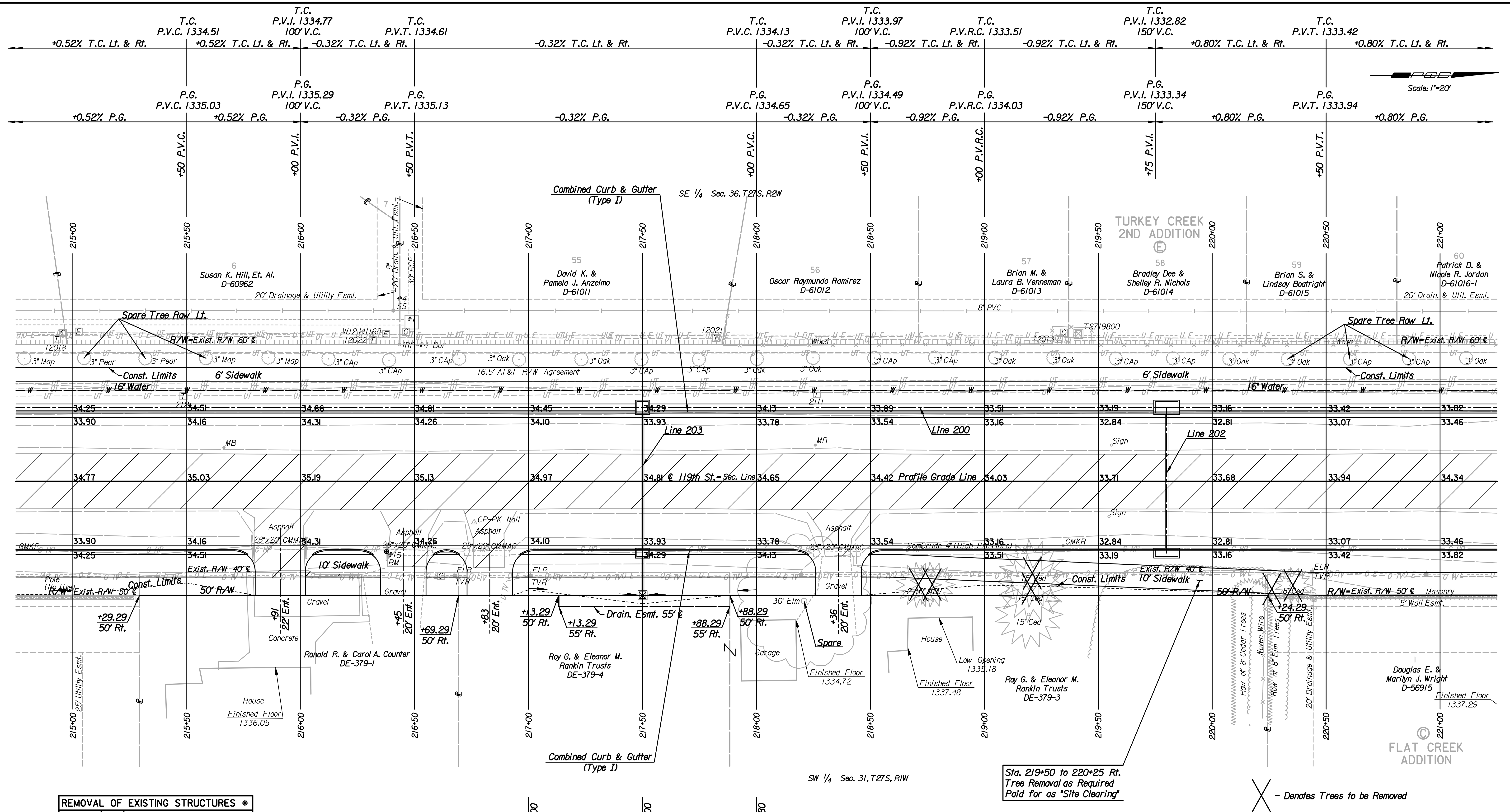


4:20:27 PM
 Date: 1/20/2011
 FILE: I:\2008\08208\Plan\08208-PL215.dgn



STATION	SIDE	ITEM
215+91	Rt.	28"x20" CMMAC with Headwalls
216+48	Rt.	28"x20" CMMAC with Headwall
216+82	Rt.	28"x20" CMMAC
218+35	Rt.	28"x20" CMMAC
219+55	Rt.	Sign
219+56	Lf.	Sign
220+23	Rt.	9 LF of Woven Wire Fence (East)

* For Information Only

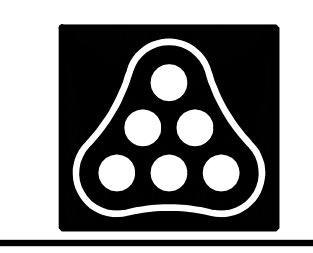
BM*15 Set Chiseled "Top Headwall S side of Drive 45'± N of center of Drive, House #2138, 32'± E of center 119th 30.81' Rt. & Sta. 216+37.68 Elev. = 1334.31

BM*14 Set Chiseled "Top Back of Curb N side of Jewell, 100'± E of center 119th 104.10' Rt. & Sta. 222+08.28 Elev. = 1334.56

- Utilities
- Gas: SemCrude, LP
 - Power: Westar Energy
 - Sanitary Sewer: Wichita Water & Sanitary Sewer Dept.
 - Telephone: AT&T
 - Television: Cox Communications

Sta. 219+50 to 220+25 Rt. Tree Removal as Required Paid for as "Site Clearing"

X - Denotes Trees to be Removed



No.	Revision	By	Date
119TH ST.			
PLAN			
STA. 215+00 TO STA. 221+00			
JAMES L. ARMOUR, P.E. - CITY ENGINEER CITY OF WICHITA PROJECT NO. 472-84894			
Professional Engineering Consultants, P.A.			
303 S. TOPEKA - WICHITA, KANSAS 67202 316-262-2691 • FAX 316-262-3003			
Designed by	JPS	Job No.	08208
Drawn by	SVB	Date	Sept., 2010
			Sheet
			9 of 149