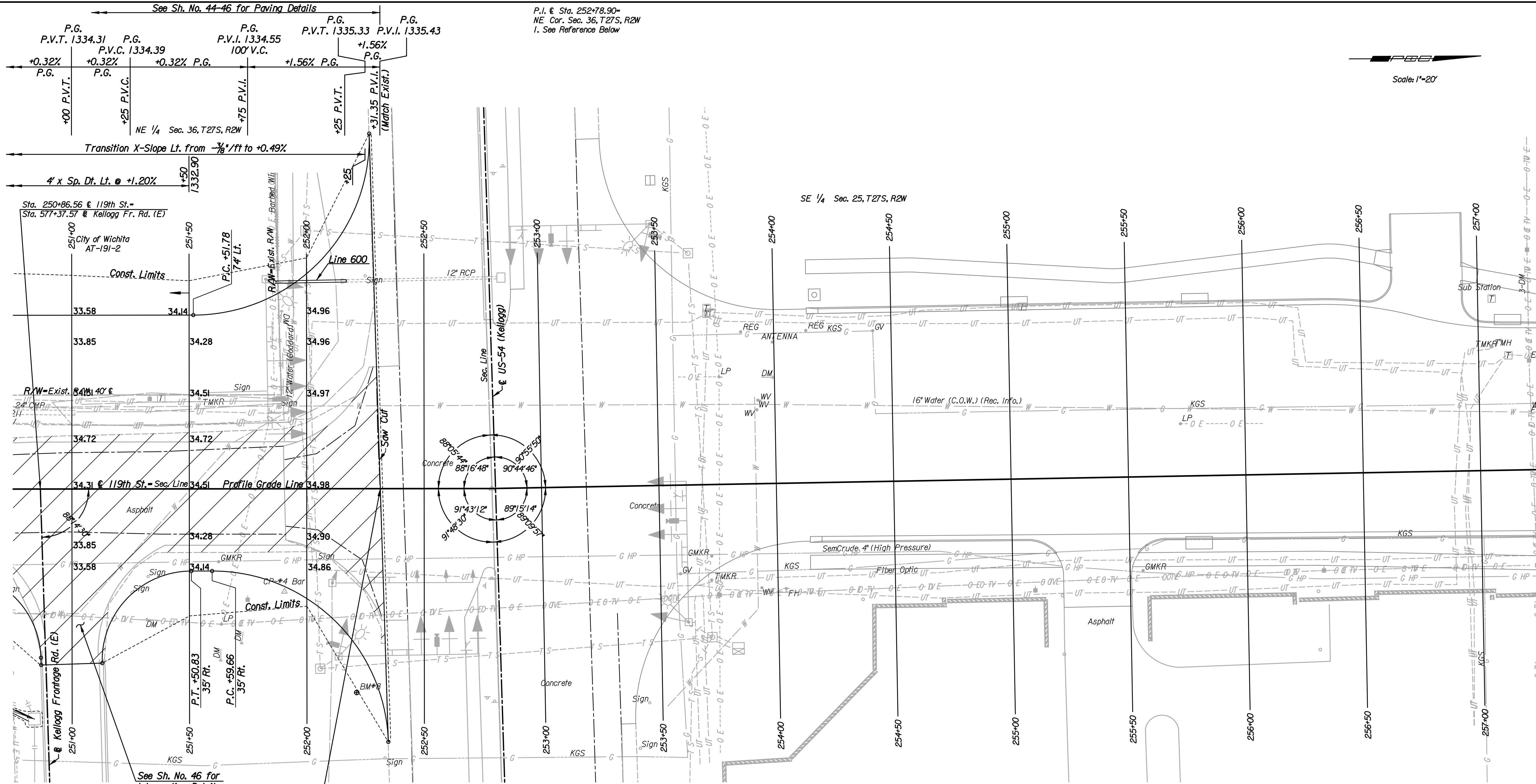


P.I. @ Sta. 252+78.90 =
NE Cor. Sec. 36, T27S, R2W
1. See Reference Below

Scale: 1"=20'



REMOVAL OF EXISTING STRUCTURES *		
STATION	SIDE	ITEM
251+26	Rt.	Sign
251+32	Rt.	Sign
251+70	Lt.	Sign
251+89	Lt.	Sign
251+89	Lt.	62 LF Barbed Wire Fence
252+04	Rt.	Sign
252+17	Lt.	12" RC End Section
252+25	Lt.	Sign

* For Information Only
Datum Benchmark:
BM*8 Found C.O.W. Disc SE Corner 119th St. and Kellogg, 85' E of center 119th St., 22.8' N to S edge E. Bd. driving lane Kellogg, formerly BM*20 from Prev. Proj. No. 54-87 K-6657-01 86.80' Rt. @ Sta. 252+21.21 Elev. = 1333.52

- Utilities
- Gas: SemCrude, LP; Kansas Gas Service
 - Power: Westar Energy
 - Telephone: AT&T
 - Television: Cox Communications
 - Water: City of Goddard; Wichita Water & Sanitary Sewer Dept.

† Wheelchair Ramp w/ Detectable Warning

- N 1/4 Cor. Sec. 36, T27S, R2W
- Found #5 Rebar in Thimble
 - N 1,677,391.3590 E 1,604,971.8330
 - Centerline of Turnaround
 - N edge of E Bd. Shoulder
 - SW corner of Inlet
 - N Pole of Billboard

- 0.50' W
- 1.00' S
- 92.40' ENE
- 89.80' SSW

Sta. 252+31.35 END
PROJECT No. 472-84694

See Sh. No. 46 for Intersection Details

10:06:12 AM
Date: 1/21/2011
Plotted By: svb
FILE: I:\2008\08208\Plan\08208-PL251.dgn

119TH ST.		By	Date
PLAN STA. 251+00 TO STA. 257+00 JAMES L. ARMOUR, P.E. - CITY ENGINEER CITY OF WICHITA PROJECT NO. 472-84694			
Professional Engineering Consultants, P.A. 303 S. TOPEKA - WICHITA, KANSAS 67202 316-262-2691 • FAX 316-262-3003			
Designed by	JPS	Job No.	08208
Drawn by	SVB	Date	Sept., 2010
			Sh. 15 of 149