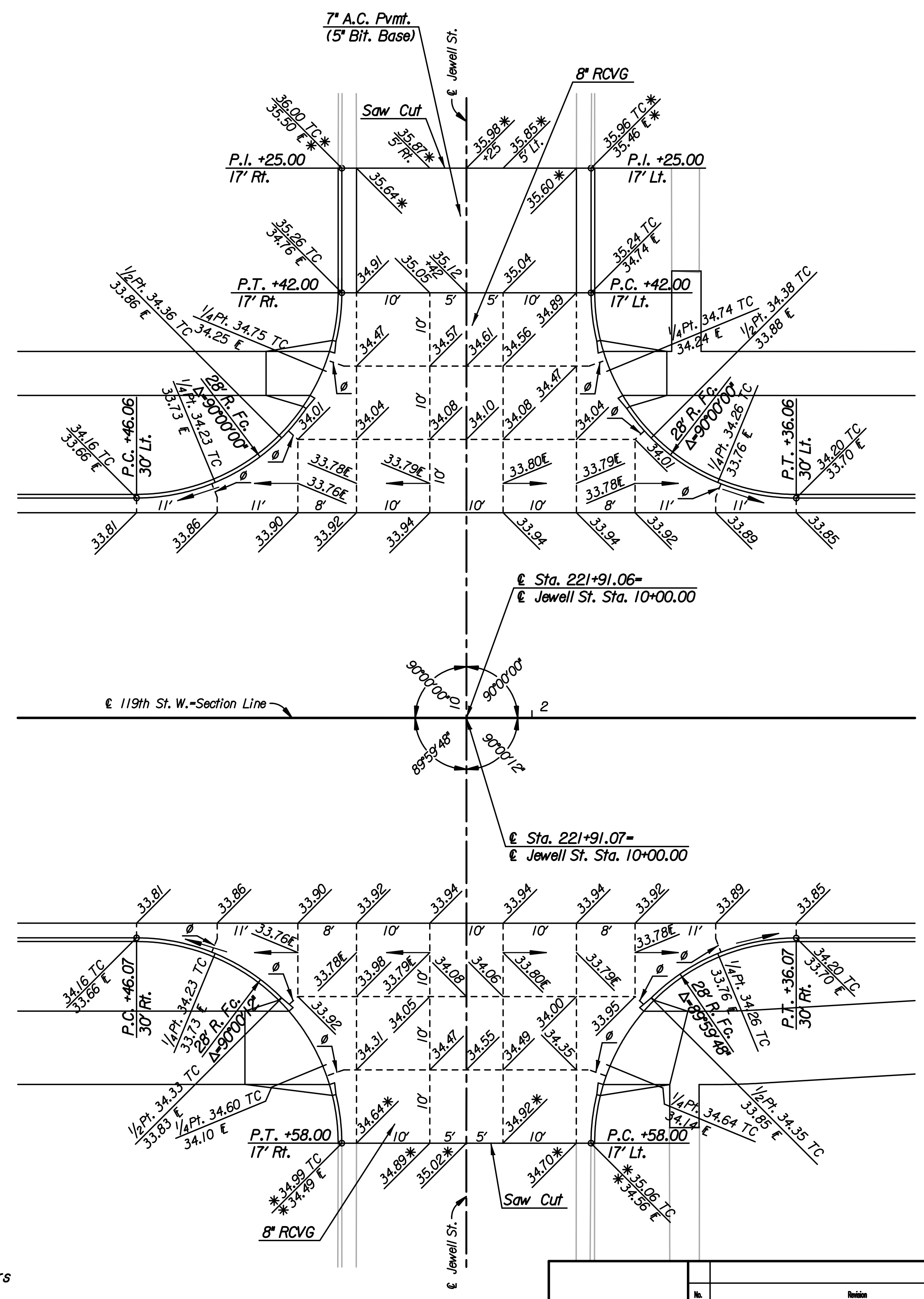
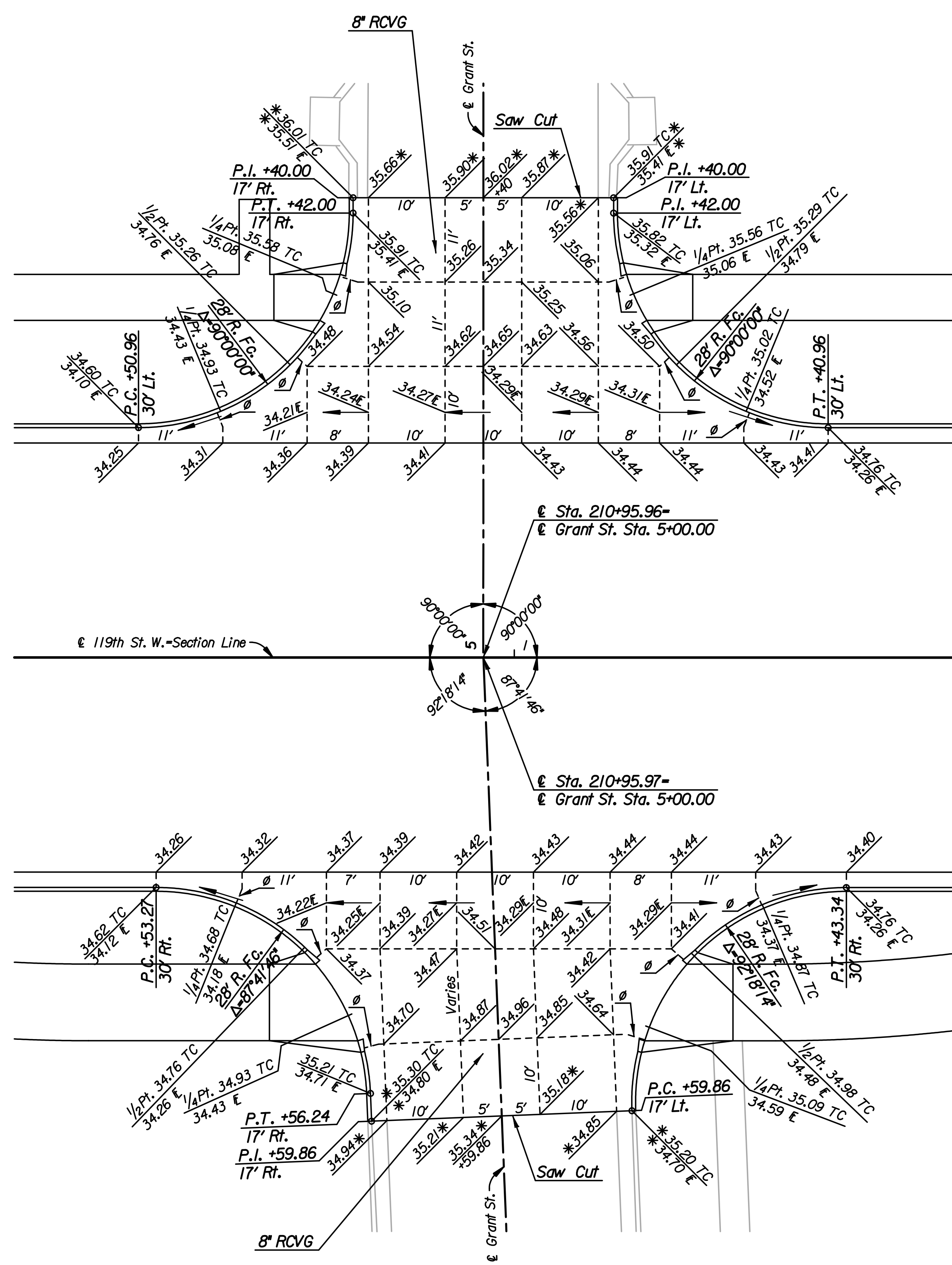


Plotted By: svb Date: 1/21/2011 3:36:58 PM
 FILE: I:\2008\Intersections\08208-Grant&Jewell.dgn



- LEGEND**
- * Match Existing
 - Ø Omit Dowels or Tie Bars
 - Contraction Joint (C.J.)

See Sh. No. 49 for Valley Gutter Details.

Revision		By	Date
119TH ST. INTERSECTION DETAILS 119TH ST. W. AND GRANT ST. 119TH ST. W. AND JEWELL ST. JAMES L. ARMOUR, P.E. - CITY ENGINEER CITY OF WICHITA PROJECT NO. 472-84694			
Professional Engineering Consultants, P.A. 303 S. TOPEKA - WICHITA, KANSAS 67202 316-262-2691 • FAX 316-262-3003			
Designed by	JPS	Job No.	08208
Drawn by	DRP	Date	Sept., 2010
			Sht. 42 of 149