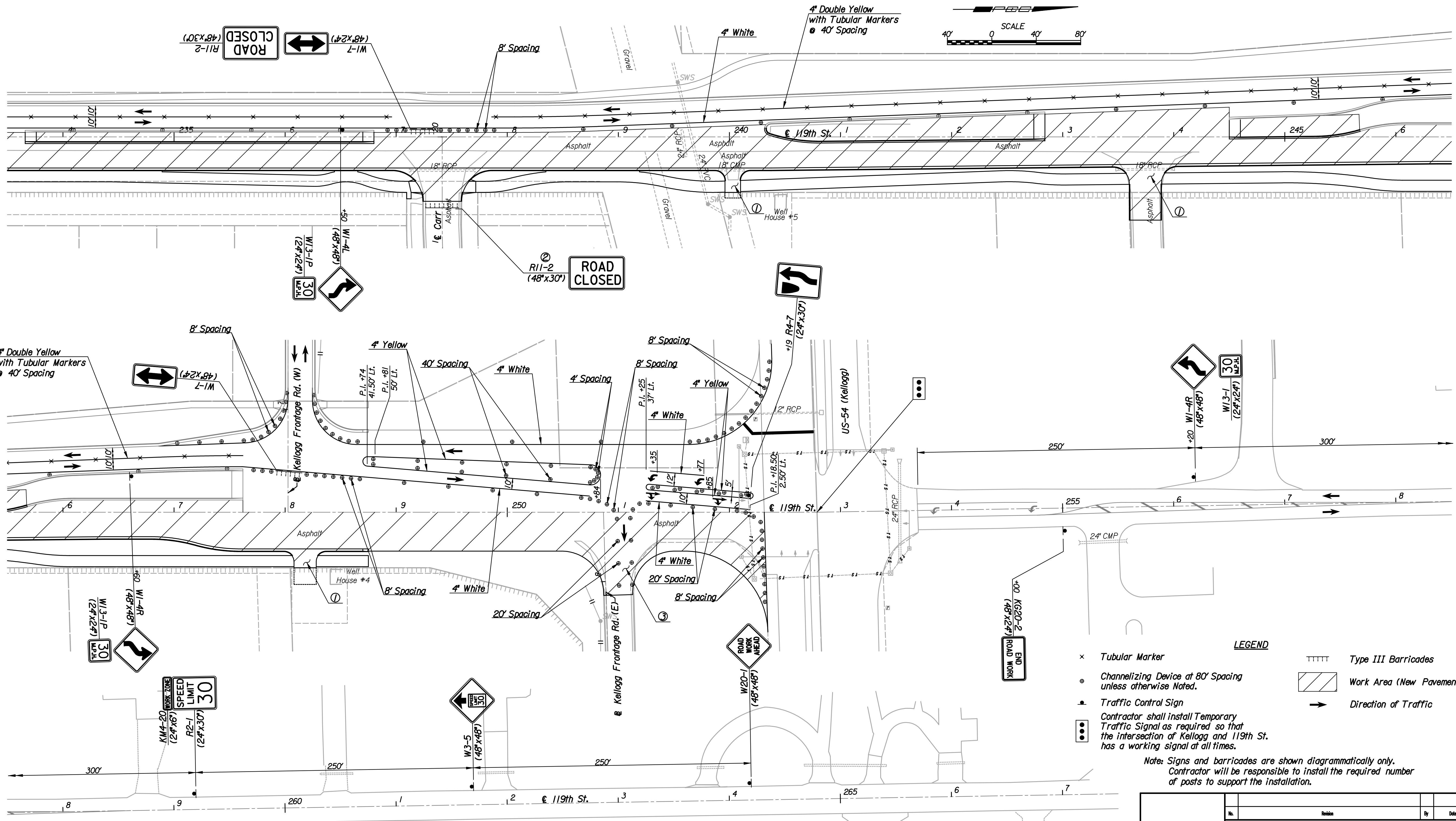


Plotted By: svb Date: 1/25/2011 10:51:49 AM  
 FILE: I:\2008\08208\Traffic Control\08208-TC Stage 3 234.dgn



- LEGEND**
- × Tubular Marker
  - ⊙ Channelizing Device at 80' Spacing unless otherwise Noted.
  - Traffic Control Sign
  - ⊙ Contractor shall install Temporary Traffic Signal as required so that the intersection of Kellogg and 119th St. has a working signal at all times.
  - TTTTT Type III Barricades
  - ▨ Work Area (New Pavement)
  - Direction of Traffic

Note: Signs and barricades are shown diagrammatically only. Contractor will be responsible to install the required number of posts to support the installation.

Note: Utilities are not shown on Traffic Control Plans. The Contractor is responsible for verification as to type and location of underground utilities as may be necessary to avoid damage thereto. The Contractor is responsible for repairing any damage to underground utilities.

- ① Provide temporary all weather access to entrance at all times during construction.
- ② Contractor to provide access to neighborhood at all times via Dora and/or Carr. Intersection work to be completed and opened to traffic as soon as possible. For traffic control when sideroad is open See Sh. No. 108. Additional traffic control required is Subsidiary.
- ③ Construct entrance half at a time. Provide traffic control per MUTCD (Latest Edition). Maintain all weather access at all times during construction. Additional traffic control required is Subsidiary.

No.	Revision	By	Date
119TH ST.			
<b>TRAFFIC CONTROL PLAN</b>			
STAGE 3 - STA. 234+00 TO STA. 267+00			
JAMES L. ARMOUR, P.E.-CITY ENGINEER CITY OF WICHITA PROJECT NO. 472-84694			
<b>Professional Engineering Consultants, P.A.</b>			
303 S. TOPEKA • WICHITA, KANSAS 67202 316-262-2691 • FAX 316-262-3003			
Designed by	JPS	Job No.	08208
Drawn by	SVB	Date	Sept., 2010
			Sh. 104 of 149