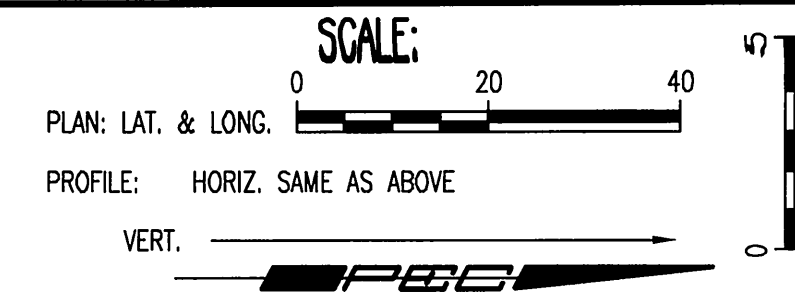


DATE	BY	CHECKED	CHECKED
PLAN			

DATE	BY	CHECKED	CHECKED
PROFILE			

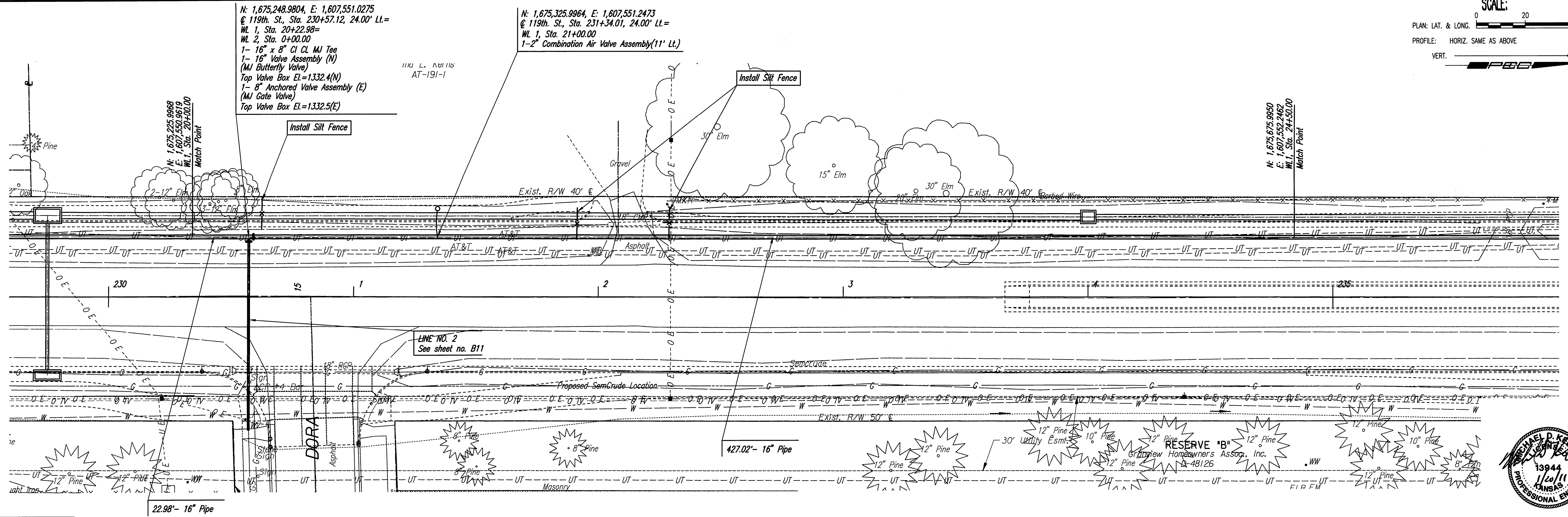
Saved 01-19-2011 8:42:11 AM by TDS
 Plot Scale: 1:20 01-19-2011 9:13:10 AM by JED.D. SCRIEPIER
 C:\2008\08208\001\08208-001-09.MXD



N: 1,675,248.9804, E: 1,607,551.0275
 @ 119th St., Sta. 230+57.12, 24.00' Lt.=
 WL 1, Sta. 20+22.98=
 WL 2, Sta. 0+00.00
 1- 16" x 8" CI Cl. MJ Tee
 1- 16" Valve Assembly (N)
 (MJ Butterfly Valve)
 Top Valve Box El.=1332.4(N)
 1- 8" Anchored Valve Assembly (E)
 (MJ Gate Valve)
 Top Valve Box El.=1332.5(E)

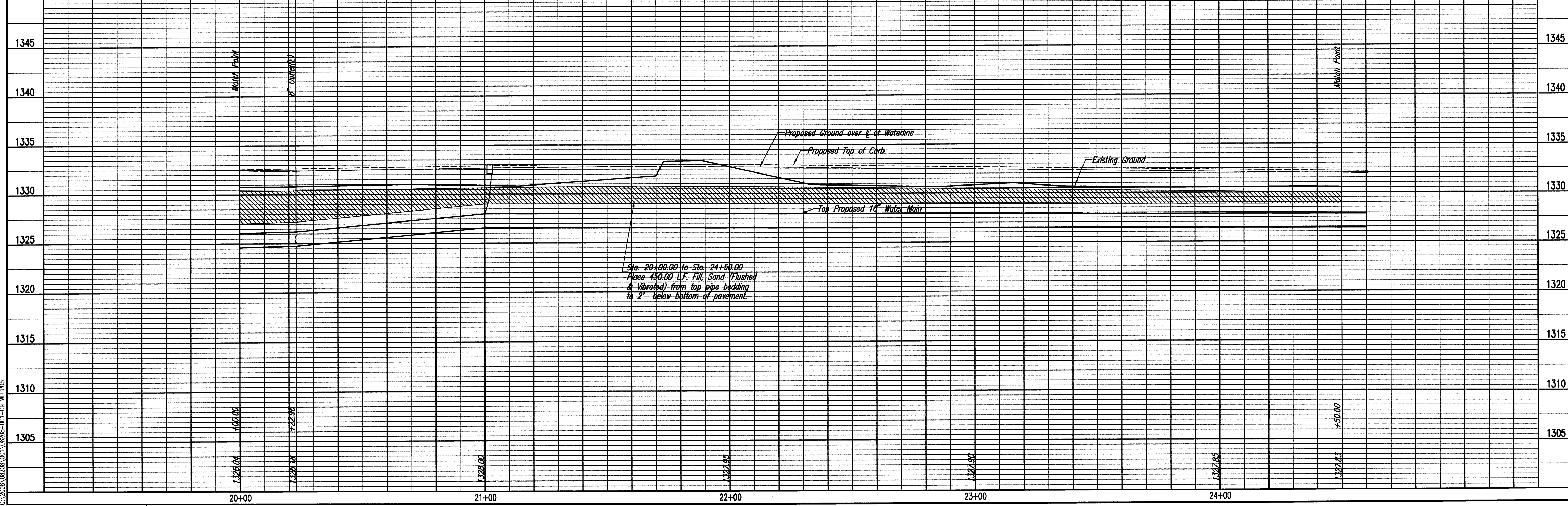
N: 1,675,325.9964, E: 1,607,551.2473
 @ 119th St., Sta. 231+34.01, 24.00' Lt.=
 WL 1, Sta. 21+00.00
 1- 2" Combination Air Valve Assembly(11' Lt.)

N: 1,675,675.9950
 E: 1,607,552.2462
 WL 1, Sta. 24+50.00
 Match Point



Unless noted otherwise, elevations shown are top of pipe

WATERLINE NO. 1



119th Street West
 WATERLINE IMPROVEMENTS
WATERLINE NO. 1

Professional Engineering Consultants, P.A.
 203 S. TOPEKA • WICHITA, KANSAS 67202
 316-262-2691 • FAX 316-262-3003

Designed By: MDK
 Drawn By: TDS
 Job No. 35-08208-001
 Date: April 2010

JAMES L. ARMOUR, P.E. - CITY ENGINEER
 CITY OF WICHITA PROJECT NO. 448-448-90507

Sheet 89 of 15