

LATERAL 5, MAIN 2, NORTHWEST INTERCEPTOR SEWER

to serve

PEARSON COMMERCIAL ADDITION

LOTS 1,4,5,6 & 7, BLOCK 1,

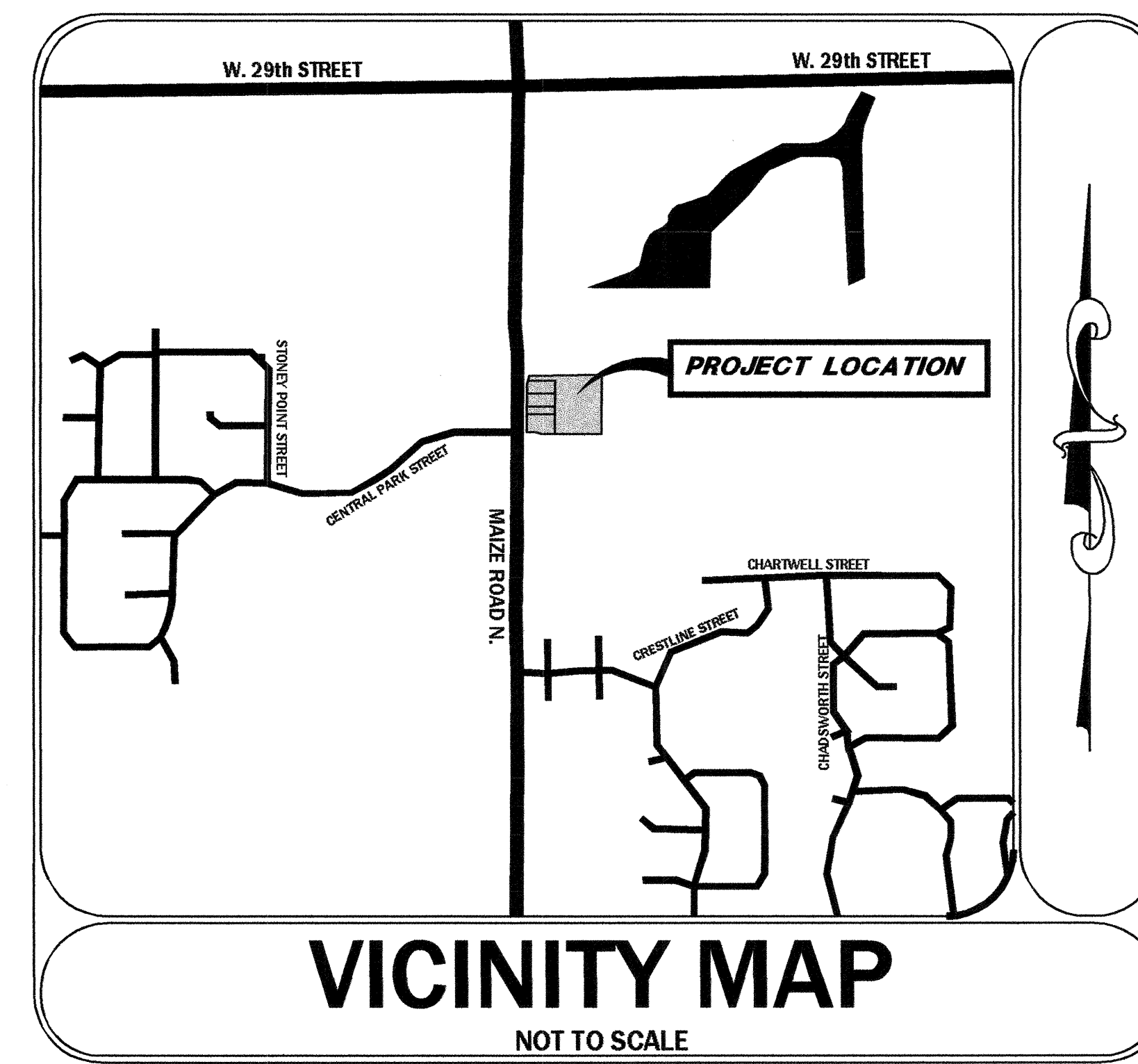
CITY OF WICHITA, KANSAS

James Armour, P.E. City Engineer

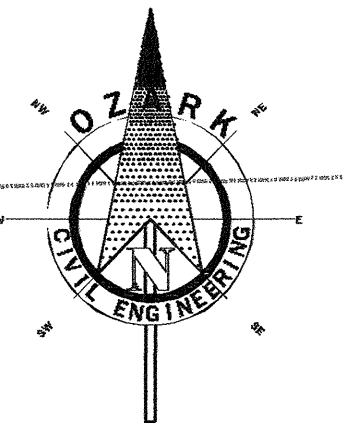
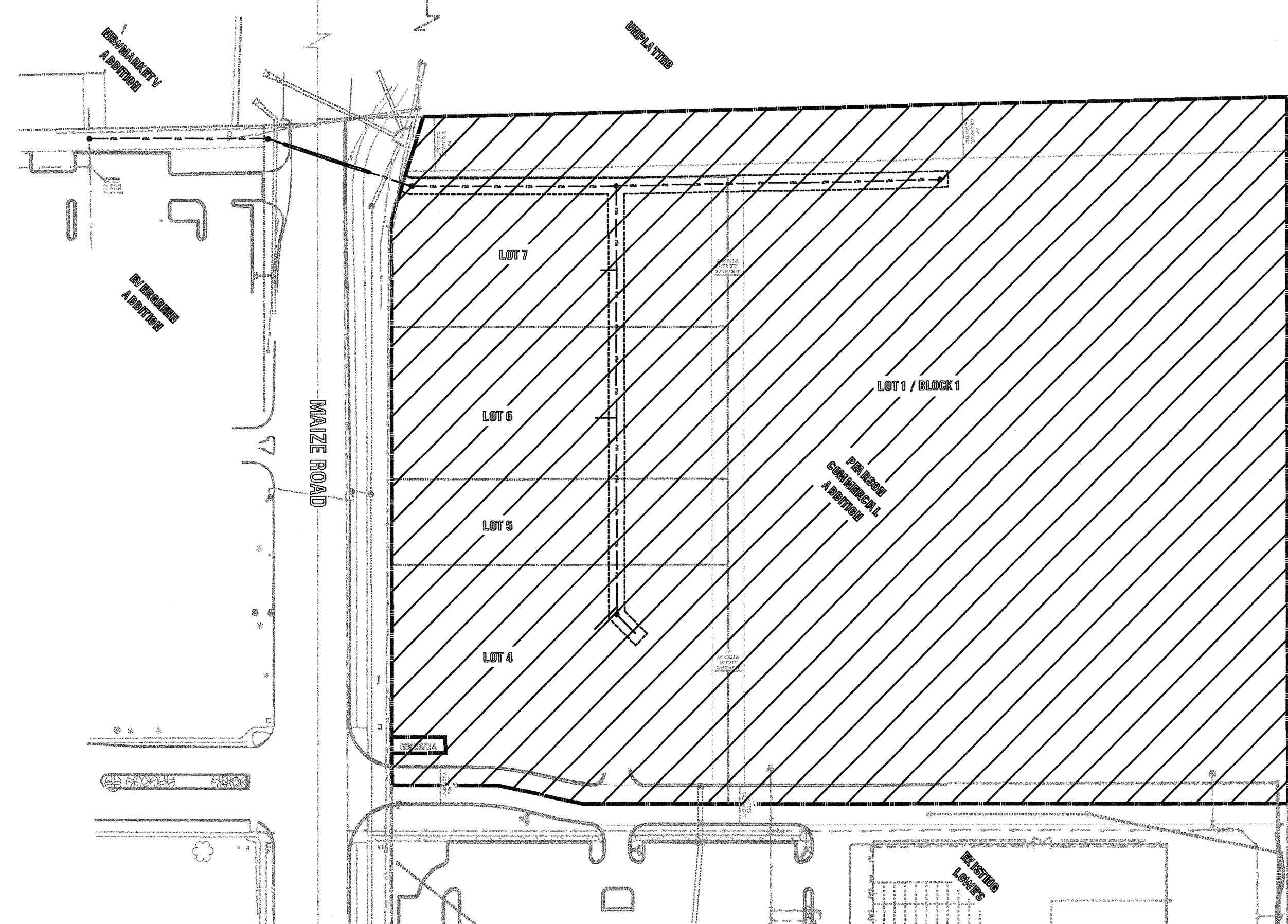
Project # 468-84688 / O.C.A. # 744316

SITE BENCHMARK
 SQUARE CUT ON TOP OF CURB AT NOSE OF ISLAND IN CENTER OF W. CENTRAL PARK STREET ON WEST SIDE OF N. MAIZE ROAD.
 ELEVATION = 1351.84

DRAWING INDEX	DATE	DESCRIPTION
1.0	01/05/2011	COVER SHEET
2.0	01/05/2011	SS LINE "A" - STA: 0+00 TO STA: 4+50
3.0	01/05/2011	SS LINE "A" - STA: 4+50 TO STA: 8+25
4.0	01/05/2011	SANITARY SEWER LINE "B"
5.0	01/05/2011	DETAIL SHEET
6.0	01/05/2011	CITY DETAILS - SANITARY SEWER MANHOLE
7.0	01/05/2011	CITY DETAILS
8.0	01/05/2011	CITY DETAILS - SOIL EROSION BMPs
9.0	01/05/2011	CITY DETAILS - SOIL EROSION BMPs
10.0	01/05/2011	CITY DETAILS - SOIL EROSION BMPs
11.0	01/05/2011	CITY DETAILS - SOIL EROSION BMPs
12.0	8/22/2007	PEARSON COMMERCIAL ADDITION



WBCarter - Contractor
 J. Terhune - City of Wichita, Field Project Engineer
 L. Wilson - City of Wichita, Inspector
 As-built
 Release Date:
 pdf: APRos 4/7/2011



- ### GENERAL NOTES
- Contractor will be required to provide notice to utility companies a minimum of forty-eight (48) hours prior to any excavation, as follows:
 Kansas One-Call 687-2470
 The Contractor must notify the following in case of an emergency:
 Cox Communications 262-4270
 Kansas Gas Service 1-888-482-4950
 Westar Energy 383-9550
 Black Hills Energy 1-800-303-0357
 AT&T 268-2245
 City of Wichita Water Dept. 268-4563
 City of Wichita Sewer Maint. 268-4024
 City of Wichita Storm Sewer Maint. 268-4090
 City of Wichita Traffic Maint. 268-4034
 - Utility service lines, poles, valve boxes, meters, and etoeters are to be adjusted as necessary by others prior to construction unless the plans specifically call for their adjustment by the Contractor or unless the plans specifically identify a utility to be adjusted by its owner during construction. Existing utilities and their location, as shown on the plans, represent the best information obtainable for design. The Contractor will be required to work around existing utilities within the right-of-way which do not conflict with proposed construction.
 - Rubble from the removal of miscellaneous structures and excess excavation which is to be wasted shall be disposed of on sites to be provided by the Contractor. These sites shall be approved by the Engineer as to suitability, appearance and site location. Locations, in the opinion of the Engineer, that will leave an unsightly appearance will not be approved. All disposal sites must be approved by the Kansas Department of Health and Environment. Material either stockpiled or disposed of in a flood plain would require a Kansas State Board of Agriculture permit. Any material dumped in waters of the United States or wetlands is subject to U.S. Corps. of Engineers permitting regulations. Any material buried or stockpiled beyond approved construction limits would require additional archaeological investigations unless buried in a previously approved borrow location.
 - Trees and shrubs in public right-of-way which are in direct conflict with proposed new construction shall be removed by the Contractor. Trees and shrubs which are not in direct conflict with proposed new construction shall be saved and protected from damage.
 - The Contractor shall give all property owners and/or tenants of developed property abutting the construction of this project a minimum of ten (10) days notice prior to start of construction.
 - The Contractor shall be responsible for preserving property irons which are damaged or destroyed by his construction operations. Such irons shall be re-established by a licensed land surveyor in accordance with state laws.
 - All existing and proposed erosion control measures including silt fencing, erosion control mat, straw bales, inlet barriers, and const. entrance shall be maintained throughout construction by the contractor and until project is accepted by the City of Wichita. The on-site engineer shall complete weekly reports on the status of erosion control measures. The contractor shall be required to comply with maintenance and/or replacement of erosion control measures as determined by the on-site engineer until project is accepted by City of Wichita. Maintenance and/or replacement of erosion control measures to be paid by L.S. bid item "Site Clearing & Restoration."
 - The Contractor shall be responsible for maintaining continuous flow of sewage through construction. Contractor's proposed method for maintaining sewage flow shall be approved by the Engineer. Cost of maintaining flow of sewage through construction will not be paid for directly and this cost shall be considered as subsidiary to the other pay items of work.
 - Contractor shall grade around exposed manholes at a 1:1 slope. Manholes set lower than existing grade shall have a 9" berm constructed around manhole to prevent infiltration into sanitary sewer system. Cost of dirt, labor, equipment, etc. to be incidental to cost of manhole. Easements shall be graded with the Street Paving project.
 - Following construction, all disturbed areas shall be regraded and restored to preconstruction grades. Any excess earth remaining from excavation shall be spread or stockpiled on-site at a location to be determined by the engineer.
 - All areas disturbed during construction shall be seeded at 300 lbs./acre with Rye Grass immediately following construction in that area. Contractor shall prepare ground per City of Wichita Specifications. All costs associated with seeding shall be included in bid item "Project Seeding"
 - The developer for this project is Brad Saville - (316) 262-2442

BY	
DATE	
DESCRIPTION	
 1/5/11	
 Civil Engineering Inc. Bentonville • Kansas City	
COVER SHEET	SEWER IMPROVEMENT PLANS FOR THE CITY OF WICHITA
DRAWN BY: JON	APPV. BY: SM
DWG. NAME: 10-0998 SSSP	DATE: 01/05/2011
JOB NO: 10-0998	SHEET NO:
EAST OF MAIZE RD AND SOUTH OF 29TH ST N. WICHITA, KANSAS 1.0	

q:\10-0998 city of wichita ls c maize and 29th st\dwg\final\10-0998 sssp.dwg - Plotted on 1/5/2011 2:33:52 PM @ a scale of 1:1 to pdf-exchange 4.0.pc3 by Scott Meese