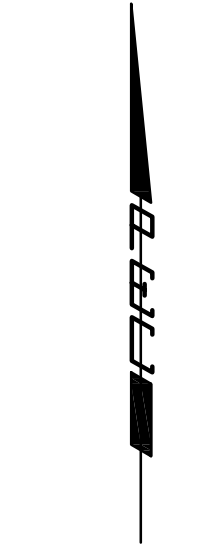


# HAMPTON SQUARE

AN ADDITION TO WICHITA, SEDGWICK COUNTY, KANSAS

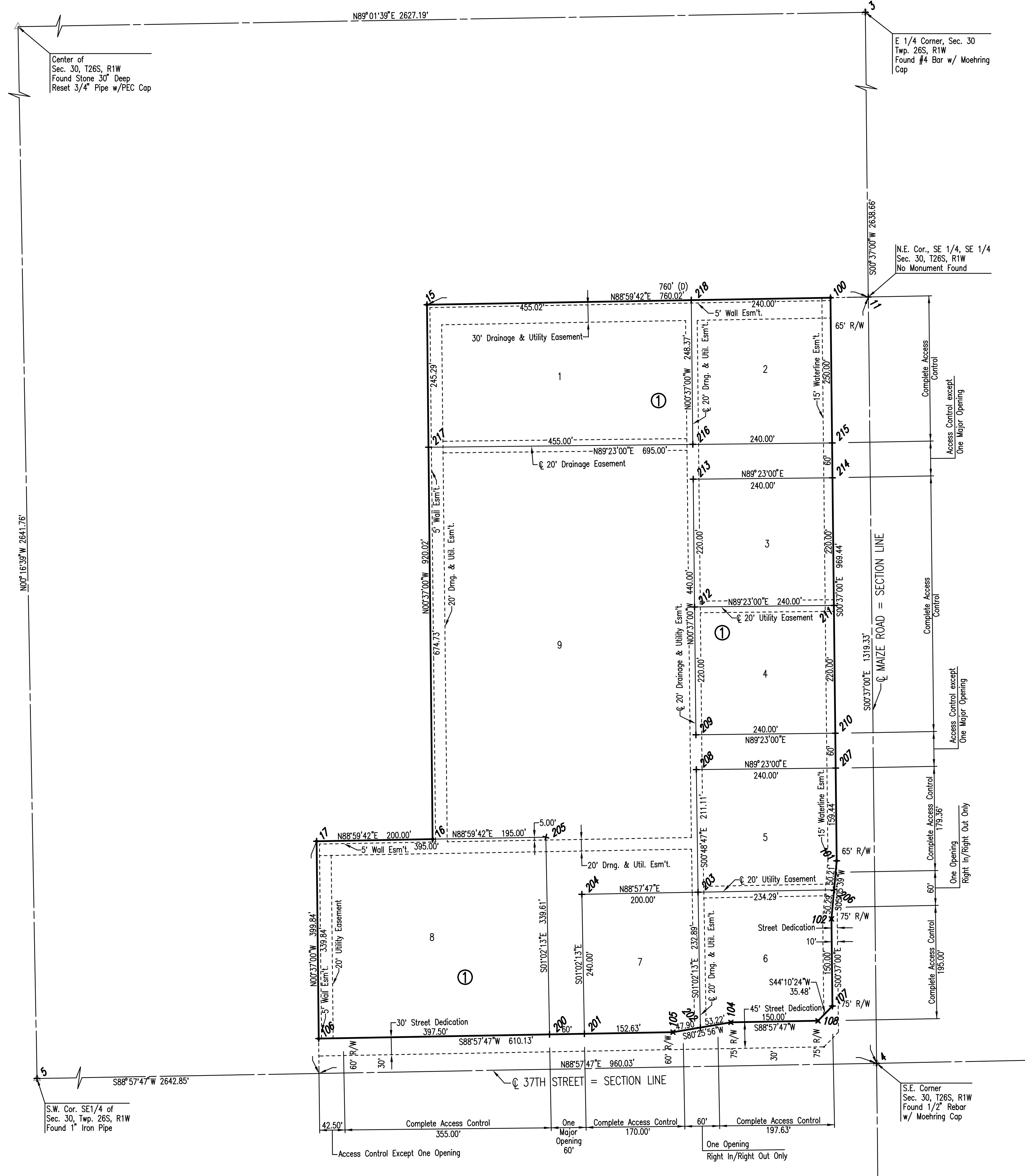


SCALE: 1"=100'

• = 1/2" REBAR WITH PEC CAP UNLESS OTHERWISE NOTED

COORDINATE LIST		
POINT	NORTH	EAST
3	12,596.6309	10,048.4767
4	9,958.1248	10,076.8706
5	9,910.2996	7,434.4567
11	11,277.3779	10,062.6737
15	11,264.0492	9,302.7730
16	10,344.0813	9,312.6731
17	10,340.5738	9,112.6993
100	11,276.2380	9,997.6822
101	10,306.8569	10,008.1140
102	10,206.7551	9,999.1907
104	10,028.5984	9,826.1024
105	10,011.7913	9,726.3903
106	10,000.7502	9,116.3563
107	10,056.7638	10,000.8048
108	10,031.3128	9,976.0779
200	10,007.9435	9,513.7934
201	10,009.0292	9,573.7836
202	10,019.7525	9,773.6223
203	10,252.6092	9,769.4078
204	10,248.9899	9,569.4405
205	10,347.5013	9,507.6478
206	10,256.8488	10,003.6562
207	10,466.2849	10,006.3984
208	10,463.7023	9,766.4122
209	10,523.6988	9,765.7666
210	10,526.2814	10,005.7527
211	10,746.2686	10,003.3853
212	10,743.6861	9,763.3992
213	10,963.6733	9,761.0319
214	10,966.2559	10,001.0180
215	11,026.2524	10,000.3723
216	11,023.6699	9,760.3862
217	11,018.7737	9,305.4126
218	11,272.0289	9,757.7136

+ 108 = COORDINATE POINT NO.



Center of  
Sec. 30, T26S, R1W  
Found Stone 30" Deep  
Reset 3/4" Pipe w/PEC Cap

E 1/4 Corner, Sec. 30  
Twp. 26S, R1W  
Found #4 Bar w/ Moehring  
Cap

N.E. Cor., SE 1/4, SE 1/4  
Sec. 30, T26S, R1W  
No Monument Found

S.W. Cor. SE1/4 of  
Sec. 30, Twp. 26S, R1W  
Found 1" Iron Pipe

S.E. Corner  
Sec. 30, T26S, R1W  
Found 1/2" Rebar  
w/ Moehring Cap

DSNR: MDK OPER. ILS SCALE: 1"=100.00  
G:\2004\04171\004\Plot02\_07-30-2004\_03:04:52 pm

No.	Revision	By	Date
CITY OF WICHITA, KANSAS JAMES L. ARMOUR, P.E. - ACTING CITY ENGINEER PRAIRIE POINTE WATER SUPPLY LINE  <b>PLAT</b> CITY OF WICHITA PROJECT NO. 448-89949 <b>Professional Engineering Consultants, P.A.</b> 303 S. TOPEKA • WICHITA, KANSAS 67202 316-262-2691 • FAX 316-262-3003			
Designed by	MDK	Job No.	04171-004
Drawn by		Date	May 2002
			Sht. 8 of 12