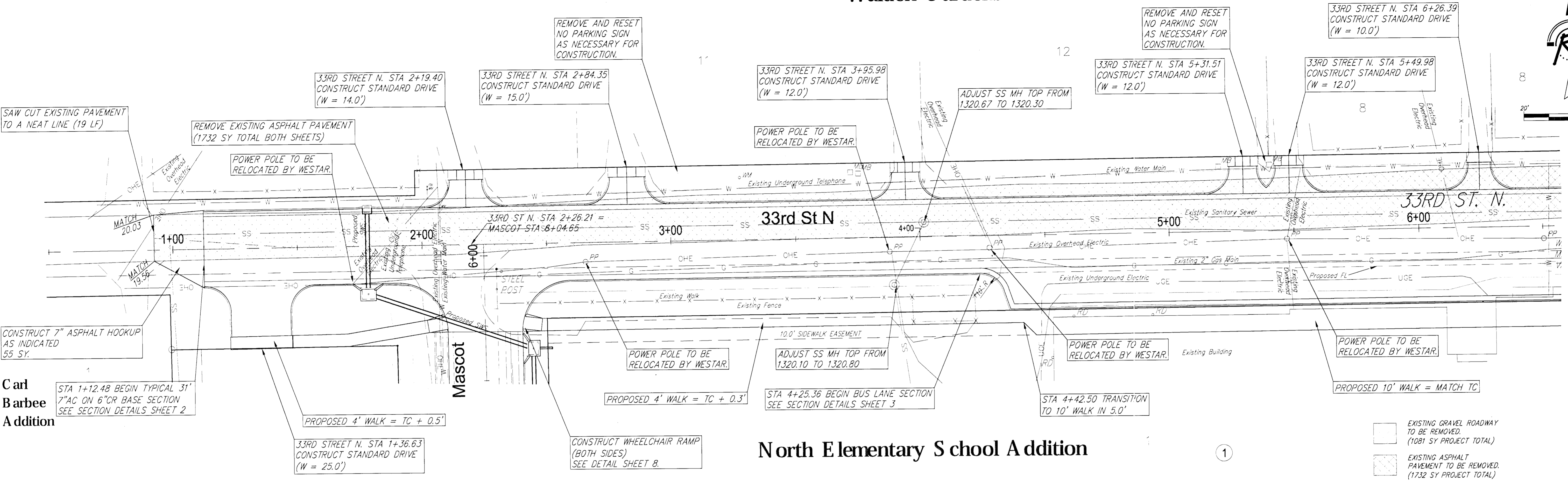
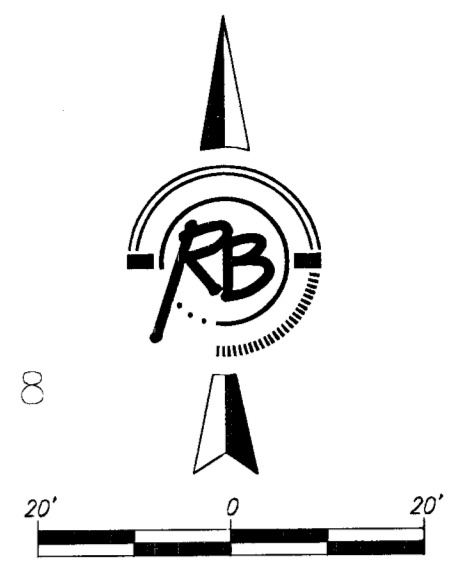


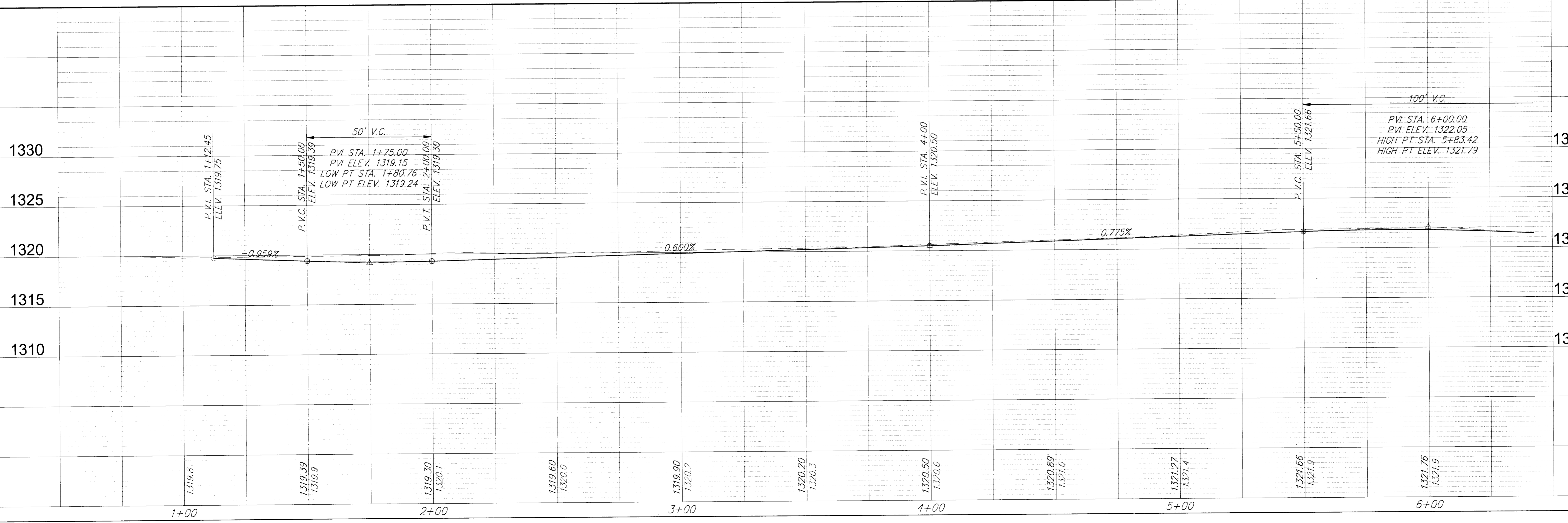
Walden Gardens



North Elementary School Addition

Carl Barbee Addition
 STA 1+12.48 BEGIN TYPICAL 31' 7" AC ON 6" OR BASE SECTION
 SEE SECTION DETAILS SHEET 2

- EXISTING GRAVEL ROADWAY TO BE REMOVED. (1081 SY PROJECT TOTAL)
- EXISTING ASPHALT PAVEMENT TO BE REMOVED. (1732 SY PROJECT TOTAL)



Ruggles & Bohm P.A.
 Engineering, Surveying, Land Planning
 1115 S. Kansas Ave., Suite 100
 Wichita, Kansas 67202
 Phone: 316.261.4477
 Email: info@rugglesandbohm.com

REVISION	DATE	BY	CHKD
REVIEW	June 4, 2010		
DATE			

PAVING IMPROVEMENTS
33rd Street North
WICHITA, KANSAS

PROJECT NUMBER: 472-84901
 DRAWING FILE: 33RD P-PT
 ENGINEERING BASE: 33RD P-PT