

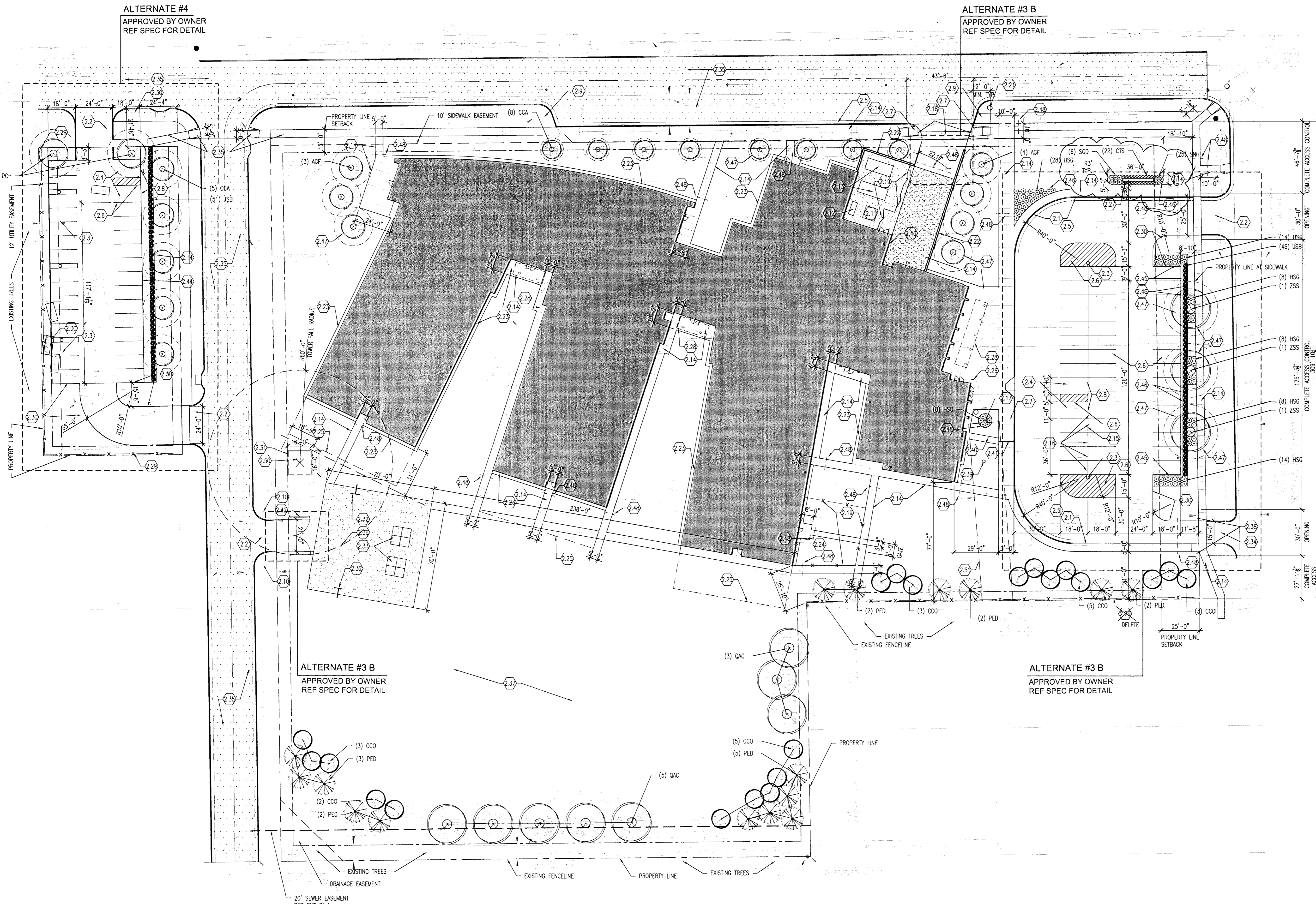
GENERAL NOTES

- A. CONTRACTOR TO VERIFY EXISTING SITE CONDITIONS.
- B. REFER TO C2.1 FOR UTILITY PLAN.
- C. REFER TO C1.2 FOR GRADING PLAN.
- D. REFER TO C1.2 FOR EROSION CONTROL PLAN.
- E. REFER TO C10.1 FOR SURVEY.
- F. ALL DIMENSIONS ARE TO BACK OF CURB UNLESS OTHERWISE NOTED.
- G. PROVIDE SUPPORT FOR CHILLER PIPING AT 10'-0" O.C. MAX. REF. MECHANICAL DRAWINGS AND 8/A65.1.
- H. EXTENT OF CONSTRUCTION SHALL BE THE PROPERTY LINE. SIDEWALK IMPROVEMENTS ALONG EAST PROPERTY LINE TO BE INCLUDED IN WORK. SIDEWALKS ADJACENT TO NORTH PROPERTY LINE TO BE PART OF CITY PETITION. REF. CIVIL DRAWINGS.

KEYED NOTES

- 21 CONCRETE CURB AND GUTTER - REF. 8/A62.1
- 22 CONSTRUCT DRIVE AND APPROACH PER CITY OF WICHITA REGULATIONS
- 23 LIGHT POLE AND BASE - REF. ELECTRICAL AND 18/A62.1
- 24 HANDCAP STALL - REF. 23/A62.1
- 25 PAINT CURB YELLOW AT STUDENT DROP OFF AND BUS LOADING.
- 26 PAINTED ISLAND AND STALL - REF. 10/A62.1
- 27 CONCRETE WHEELCHAIR CURB RAMP W/ TRUNCATED WARNING STRIP - REF. 5, 6, & 7/A62.1
- 28 ACCESSIBLE F.C. SIGN - REF. 11/A62.1
- 29 BUS LOADING SIGN - REF. 13/A62.1
- 210 FIRE LANE SIGN - REF. 12/A62.1
- 211 TRANSFORMER W/ CONCRETE PAD - REF. MECH. AND 17/A62.1
- 212 GENERATOR W/ CONCRETE PAD - REF. ELECT. AND 3/A63.1
- 213 CHILLER W/ CONCRETE PAD - REF. MECH. AND 3/A63.1
- 214 4" CONCRETE SIDEWALK - REF. 1/A62.1
- 215 "RESERVED FOR PRINCIPAL" SIGN - REF. 15/A62.1
- 216 "RESERVED FOR VISITOR" SIGN - REF. 14/A62.1
- 217 FLAGPOLE - REF. 20/A62.1
- 218 6" CONCRETE SIDEWALK AT ACCESS ROAD CROSSING - REF. 1/A62.1
- 219 4" TALL CHAINLINK FENCE W/ 3'-0" WIDE GATE - REF. SPEC.
- 220 7' TALL CHAINLINK FENCE W/ (3) 4'-0" PAIR OF GATES - REF. SPEC.
- 221 FIRE HYDRANT - REF. CIVIL DRAWINGS
- 222 10'-0" TALL MASONRY SCREEN WALL - REF. 6, 7, & 8/A64.1
- 223 2'-0" WIDE CONTINUOUS CONCRETE MOW STRIP AT BUILDING PERIMETER, TYP. - REF. SECTIONS
- 224 PRE-K PLAYGROUND EQUIPMENT - BY OWNER
- 225 FUTURE EXPANSION
- 226 FOOT SCRAPER - REF. 24/A62.1
- 227 MONUMENT SIGN - REF. 13 & 14/A64.1
- 228 PRECAST CONCRETE PANEL CANOPY - ALT #5 SA & 59 - REF. ELEVATIONS AND SECTIONS
- 229 6' TALL WOOD SCREEN FENCE - REF. CITY OF WICHITA STANDARD
REDUCE FENCE HEIGHT FROM 6' TO 3' AT THE POINT 20' FROM EAST AND NORTH PROPERTY LINES SURROUNDING THE WEST PARKING LOT.
- 230 EDGE OF ASPHALT PAVING - REF. 9/A62.1
- 231 10' TALL CHAINLINK FENCE W/GATE - REF. SPEC.
- 232 BASKETBALL BACKSTOPS - BY OWNER
- 233 PLAY MARKINGS - PAINT ON CONCRETE
- 234 EXIT/RIGHT TURN ONLY DRIVE - CONSTRUCT PER CITY STANDARDS
- 235 STREET AND SIDEWALK IMPROVEMENTS AND BUS LOADING ZONE BY CITY PETITION - N.I.C. - REF. CIVIL
- 236 FIRE DEPARTMENT TURN AROUND
- 237 PLAYGROUND AREA, BY OWNER
- 238 RIGHT TURN ONLY AND DO NOT ENTER SIGNS - REF. SPEC.
- 239 NEW SANITARY MANHOLE - REF. CIVIL
- 240 CONCRETE SWALE - REF. NOTES ON 23/A62.1 FOR DETAIL
- 241 SIDEWALK FLUME - REF. 23/A62.1
- 242 PIPE GATE W/ CHAIN AND LOCK - REF. 25/A62.1
- 243 FIRE DEPARTMENT CONNECTION - REF. MECH & CIVIL
- 244 CONCRETE AND ASPHALT EDGE TRANSITION - REF. 22/A62.1
- 245 18" WIDE x 6" DEPTH GRAVEL STRIP - 1/2" DIA. WASHED GRAVEL - N.I.C.
- 246 INSTALL 5/8" CURV-RITE ALUMINUM LANDSCAPE EDGING - REF. SPEC. - N.I.C.
- 247 TYPICAL TREE PLANTING - REF. SPEC. - N.I.C.
- 248 6" PVC IRRIGATION SLEEVE - COORD. WITH IRRIGATION CONTRACTOR - N.I.C.
- 249 BERMUDAGRASS SEED MIX - REF. SPEC.
- 250 MICROWAVE TOWER BASE - REF. X/A62.1 & STRUCT.
- 251 REVISED 20' SANITARY SEWER EASEMENT - REF. C2.3

- LIGHT DUTY ASPHALT PAVING
5" TOTAL THICKNESS
REF. SPEC FOR BASE PREPARATION
- MEDIUM DUTY ASPHALT PAVING
7" TOTAL THICKNESS
REF. SPEC FOR BASE PREPARATION
- LIGHT DUTY CONCRETE PAVING
5" TOTAL THICKNESS
PROVIDE 1 LAYER 6X6 W4.0XW4.0 WWF AT CENTER OF SLAB
REF. SPEC FOR BASE PREPARATION
- MEDIUM DUTY CONCRETE PAVING
6" TOTAL THICKNESS
PROVIDE 1 LAYER 6X6 W4.0XW4.0 WWF AT CENTER OF SLAB
REF. SPEC FOR BASE PREPARATION
- NEW STREET CONSTRUCTION - N.I.C.
NEW BUS LOADING ZONE - N.I.C.



LANDSCAPE PLANT SCHEDULE - N.I.C.

Qty	Key	Botanical Name	Common Name	Size	Specification
Trees					
12	AGF	Acer ginnala 'Flame'	'Flame' Amur Maple	6' - 7' HT.	Multi-trunk / B&B
8	QAC	Quercus acutissima	Sawtooth Oak	2" Cal.	B&B
16	PED	Pinus edulis	Pinon Pine	6' - 7' HT.	B&B
21	CCC	Cercis canadensis 'Oklahoma'	Oklahoma Redbud	1-1/2" Cal.	B&B
9	CCA	Cercis canadensis 'Aba'	Eastern Whitebud Redbud	1-1/2" Cal.	B&B
3	ZSS	Zelkova serrata 'Schmidtow'	Wireless Zelkova	1-1/2" Cal.	B&B
2	PCH	Pistachia chinensis	Chinese Pistache	1-1/2" Cal.	B&B
47 Total Trees					
Shrubs, Grasses & Perennials					
22	GTS	Coneopsis x 'tequila Sunrise'	'tequila Sunrise' Tickseed	1 Gal	Container
92	HSG	Hemerocallis 'Sherwood Gladiator'	'Sherwood Gladiator' Daylily	1 Gal	Container
97	JSB	Juniperus sabinna 'New Blue'	'New Blue' Tamarix Juniper	3 Gal	Container
25	SNH	Marcus Meadow Sage	Salvia nemorosa 'Hoeunonarc'	1 Gal	Container
311 Total Shrubs, Grasses & Perennials					

Note: In case of a discrepancy between the Plant Schedule and the Plans, the Plans shall govern.

LANDSCAPE ORDINANCE CALCULATIONS

SCHOOL SITE
LANDSCAPE REQUIRED (METHOD #2):
909 TOTAL LF OF STREET FRONTAGE
156 PERPENDICULAR DISTANCE
744 ADJUSTED STREET FRONTAGE
x10 REQ. SQ. FT. FACTOR
7,440 TOTAL SQ. FT. LANDSCAPE REQUIRED
31,478 TOTAL SQ. FT. LANDSCAPE SHOWN

SHADE TREES REQUIRED: 7,440 SF / 500 = 15 SHADE TREES
SHADE TREES SHOWN: 7 SHADE TREES + 22 ORNAMENTAL TREES

PARKING STALLS REQUIRED: 67 STALLS, 4 SHADE TREES
EAST PARKING LOT
PARKING STALLS SHOWN: 44 STALLS, 3 ORNAMENTAL TREES

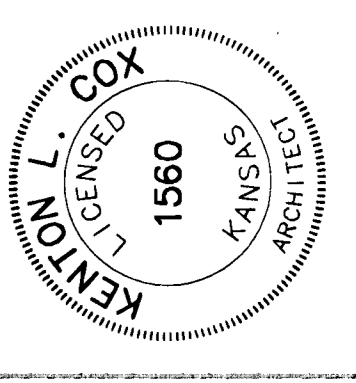
ALTERNATE WEST LOT
PARKING STALLS SHOWN: 30 STALLS, 2 SHADE TREES + 5 ORN. TREES

ADDITIONAL REQUIRED BUFFER WITH NO SCREENING
SOUTH PROPERTY LINE OF SITE
632 SOUTH PROPERTY FRONTAGE
x20 REQ. TREES/LINEAL FOOTAGE
32 TOTAL TREES REQ.

24 SHADE/EVERGREEN TREES SHOWN
21 ORNAMENTAL TREES SHOWN = 10 SHADE TREES
34 TOTAL TREES SHOWN



SCHAEFER JOHNSON COX FREY ARCHITECTURE
Emphatic Center
257 N. Broadway
Wichita, Kansas
67202-2317
Phone: 316.261.8833
Fax: 316.261.8835
www.sjcf.com
architecture@sjcf.com



RUGGLES & BOHM, P.A.
CIVIL ENGINEERS
K.E. MILLER ENGINEERS
CIVIL ENGINEERS
DUDLEY WILLIAMS & ASSOCIATES, P.A.
STRUCTURAL ENGINEERS
MIDWEST ENGINEERING, INC.
MECHANICAL ENGINEERS
JOHNSON ENGINEERING
ELECTRICAL ENGINEERS

NORTH ELEMENTARY SCHOOL
UNIFIED SCHOOL DISTRICT #259
3361 NORTH ARKANSAS AVE.
WICHITA, KANSAS 67204
BID NUMBER 10 - 25016

© 2009
Schaefer Johnson Cox Frey & Associates, P.A.
All rights reserved.
These drawings and their contents, including, but not limited to, all concepts, designs, & data are the exclusive property of Schaefer Johnson Cox Frey (SJC), and may not be used or reproduced in any way without the express consent of SJC.

Revisions

△	14 MAY 2010	
△		
△	CCI RESP. #3	
△	CM-36	
△	CM-54	

Project Number
SJCF 3043.00
US259-19-25016

Date
7 APRIL 2010

SITE PLAN

1:30
C21.1R3

