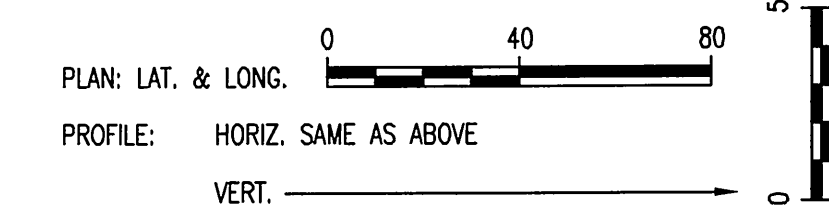


SCALE:



WL NO 1 - CURVE DATA
 $\Delta=28^{\circ}5'37''$ Rt $D=21^{\circ}42'10.6''$ $R=264.00'$ $L=129.45'$ $T=66.05'$ $E=8.14'$
 CURVE DATA BASED ON \odot RADIUS $\Delta/2=14^{\circ}2'48.5''$

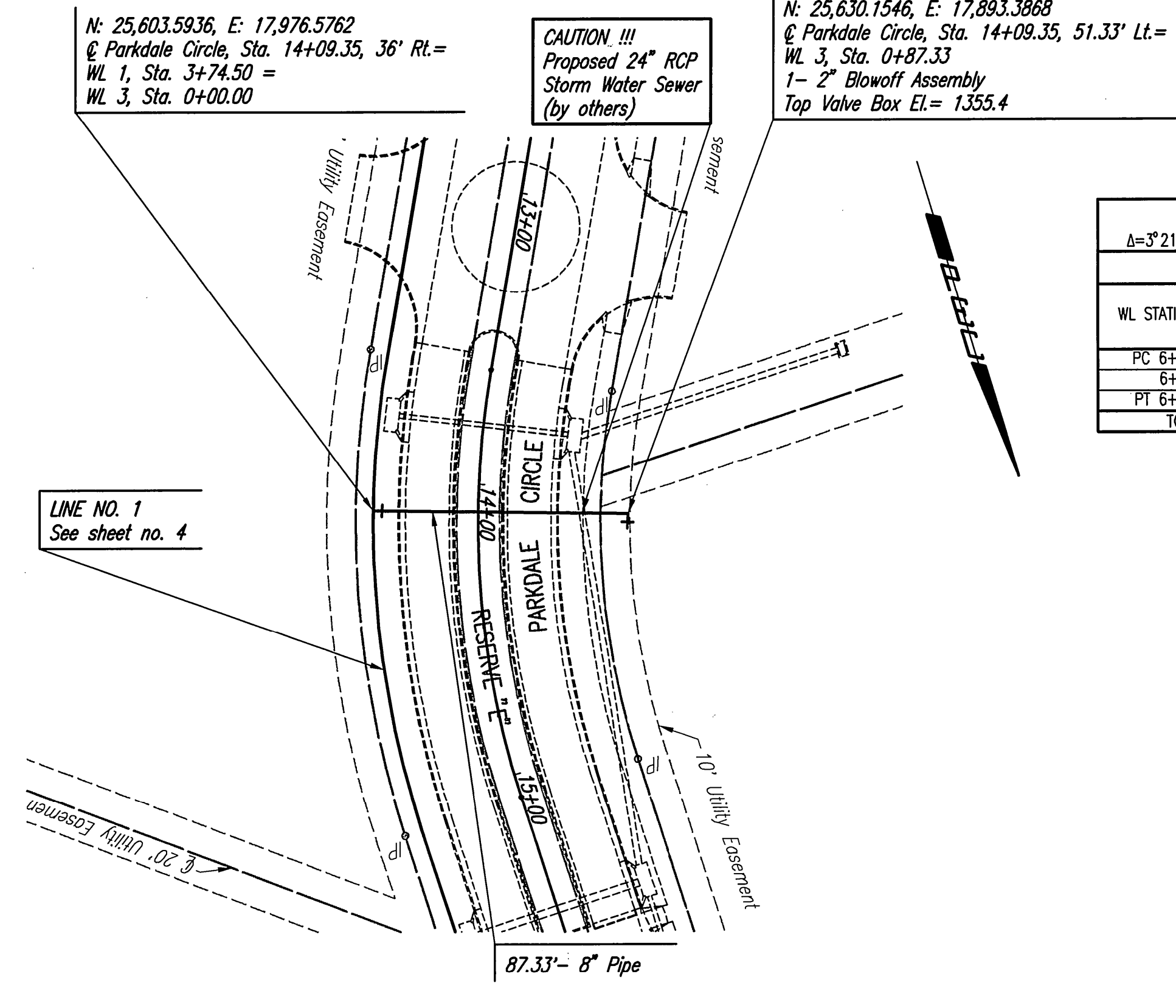
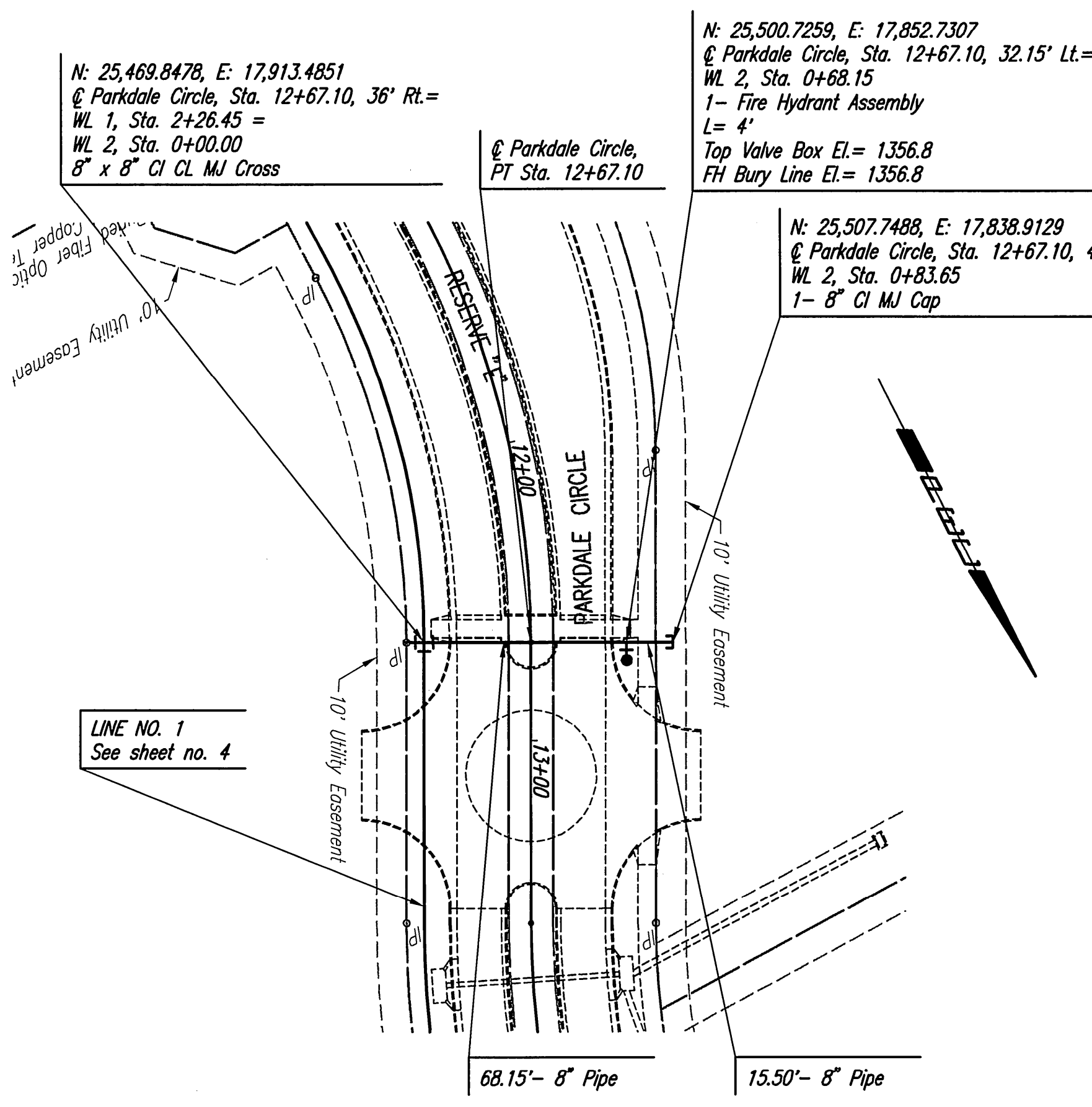
WL STATION	WL ARC LENGTH	CHORD LENGTH ON 6' OFFSET Right	DEFLECTION ANGLE	TOTAL DEFLECTION
PC 0+97.00			0°00'00.0"	0°00'00.0"
1+00.00	3.00'	2.93'	0°19'32.0"	0°19'32.0"
1+25.00	25.00'	24.42'	2°42'46.3"	0°30'218.3"
1+50.00	25.00'	24.42'	2°42'46.3"	0°45'04.6"
1+75.00	25.00'	24.42'	2°42'46.3"	0°59'51.0"
2+00.00	25.00'	24.42'	2°42'46.3"	1°14'37.3"
2+25.00	25.00'	24.42'	2°42'46.3"	1°29'23.6"
PT 2+26.45	1.45'	1.42'	0°09'26.4"	1°44'10.0"
TOTAL	L=129.45'	Defl./ft.= 6.510884 min.		

WL NO 1 - CURVE DATA
 $\Delta=28^{\circ}5'37.3''$ Lt $D=17^{\circ}3'8.3''$ $R=336.00'$ $L=164.75'$ $T=84.07'$ $E=10.36'$
 CURVE DATA BASED ON \odot RADIUS $\Delta/2=14^{\circ}2'48.7''$

WL STATION	WL ARC LENGTH	CHORD LENGTH ON 6' OFFSET Right	DEFLECTION ANGLE	TOTAL DEFLECTION
PC 3+20.34			0°00'00.0"	0°00'00.0"
3+25.00	4.66'	4.74'	0°23'50.3"	0°23'50.3"
3+50.00	25.00'	25.44'	2°07'53.5"	0°23'43.9"
3+74.50	24.50'	24.93'	2°05'20.1"	0°43'70.4"
3+75.00	0.50'	0.51'	0°02'33.5"	0°43'37.4"
4+00.00	25.00'	25.44'	2°07'53.5"	0°63'31.0"
4+25.00	25.00'	25.44'	2°07'53.5"	0°83'24.5"
4+50.00	25.00'	25.44'	2°07'53.5"	1°03'18.1"
4+75.00	25.00'	25.44'	2°07'53.5"	1°23'11.6"
PT 4+85.09	10.09'	10.27'	0°51'37.0"	1°42'48.7"
TOTAL	L=164.75'	Defl./ft.= 5.115685 min.		

WL CURVE DATA
 $\Delta=3^{\circ}21'39''$ Lt $D=10^{\circ}50'28.3''$ $R=528.5'$ $L=31.00'$ $T=15.5'$ $E=.230'$
 CURVE DATA BASED ON \odot RADIUS $\Delta/2=1^{\circ}40'49.4''$

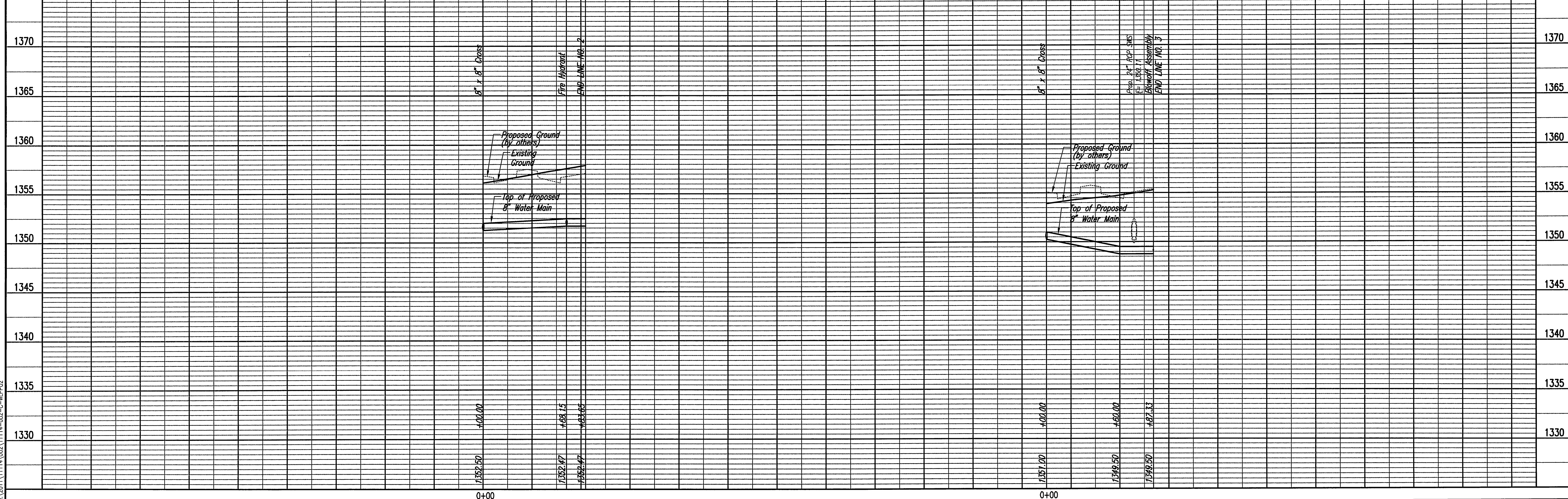
WL STATION	WL ARC LENGTH	CHORD LENGTH ON 6' OFFSET Right	DEFLECTION ANGLE	TOTAL DEFLECTION
PC 6+32.74			0°00'00.0"	0°00'00.0"
6+50.00	17.26'	17.46'	0°56'08.1"	0°56'08.1"
PT 6+63.74	13.74'	13.90'	0°44'41.2"	0°44'49.4"
TOTAL	L=31.00'	Defl./ft.= 3.252362 min.		



Unless noted otherwise, elevations shown are top of pipe

WATERLINE NO. 2

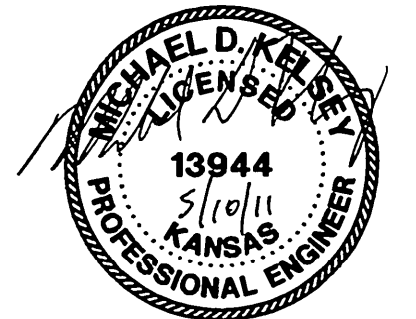
WATERLINE NO. 3



PLAN CHECKED CHECKED BY DATE

PROFILE CHECKED CHECKED BY DATE

Saved 05-09-2011 1:30:56 PM by RLL
 File Name: 140-05-09-2011 23717.dwg
 Scale: 1/4\"/>



NEWMARKET OFFICE 2ND - PHASE 1
 WATERLINE IMPROVEMENTS
WATERLINE NO. 2 AND NO. 3
 JAMES L. ARMOUR, P.E. - CITY ENGINEER
 CITY OF WICHITA PROJECT NO. 448-90523

PROFESSIONAL ENGINEERING CONSULTANTS, P.A.
 303 SOUTH TOPEKA WICHITA, KS 67202
 316-262-2881 www.pec.com

PEC
 Designated By: MDX
 Drawn By: CSL
 Job No.: 35-11114-002-042
 Date: JANUARY 2011

Sheet 5 of 11