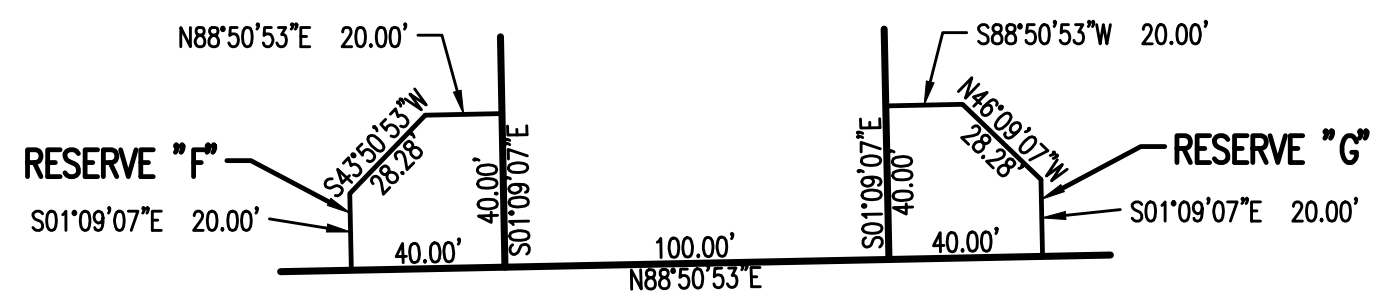
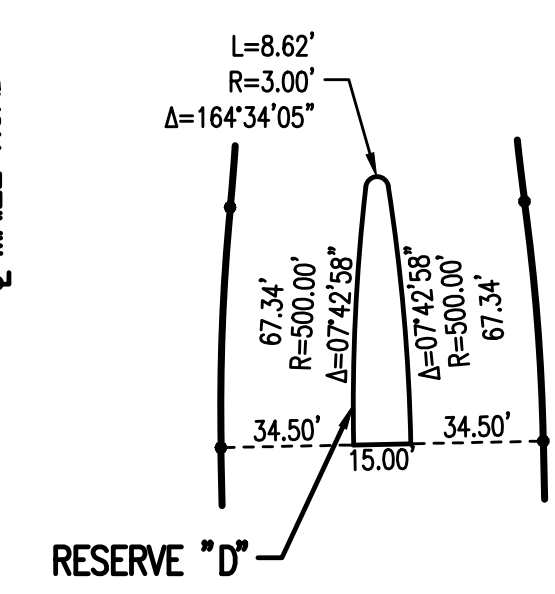
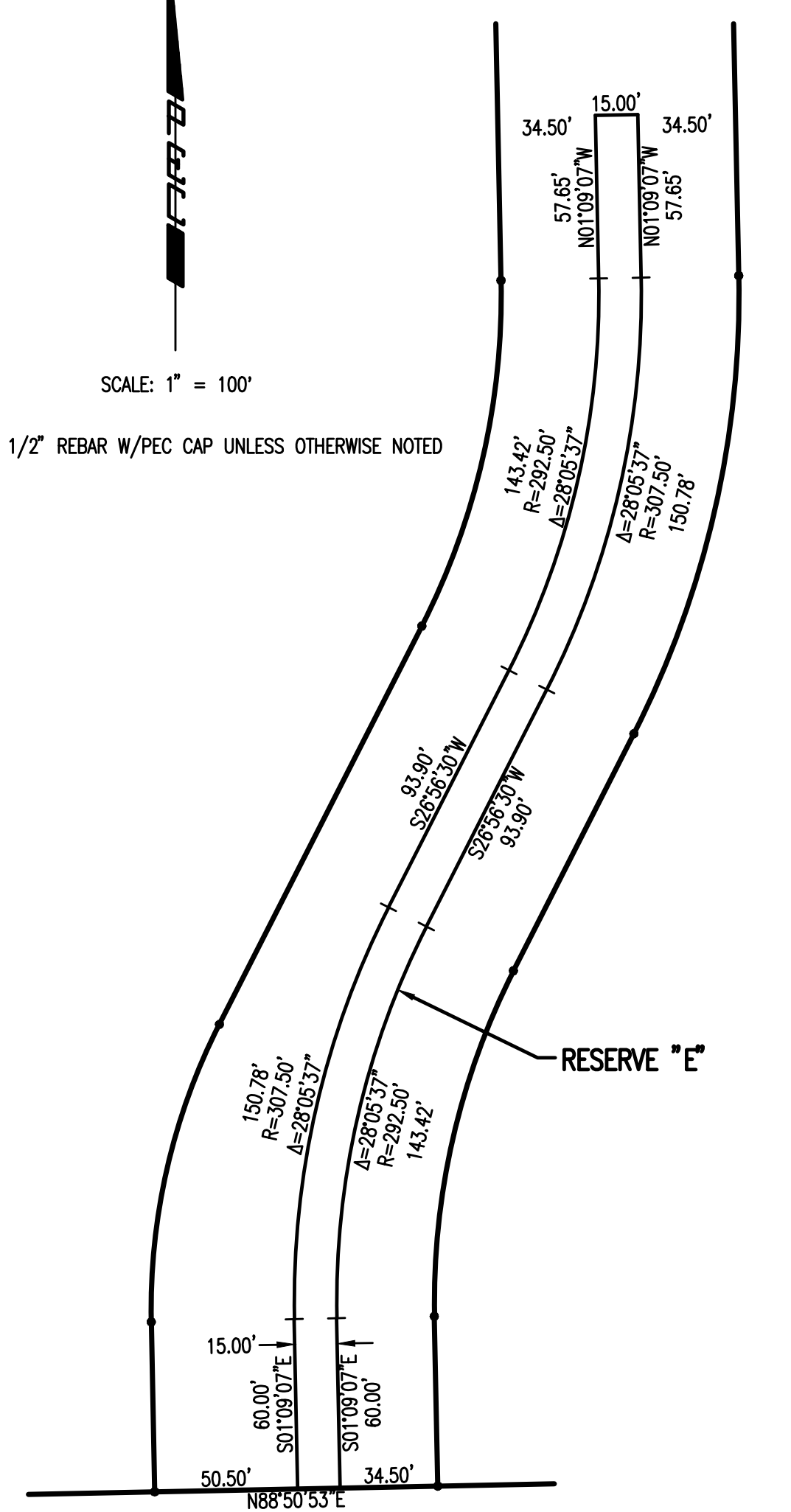
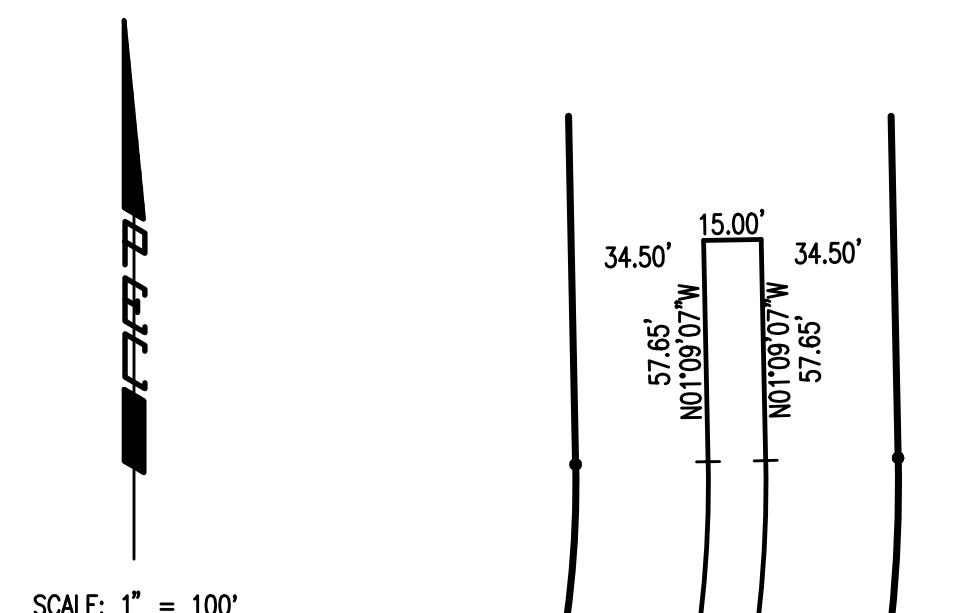
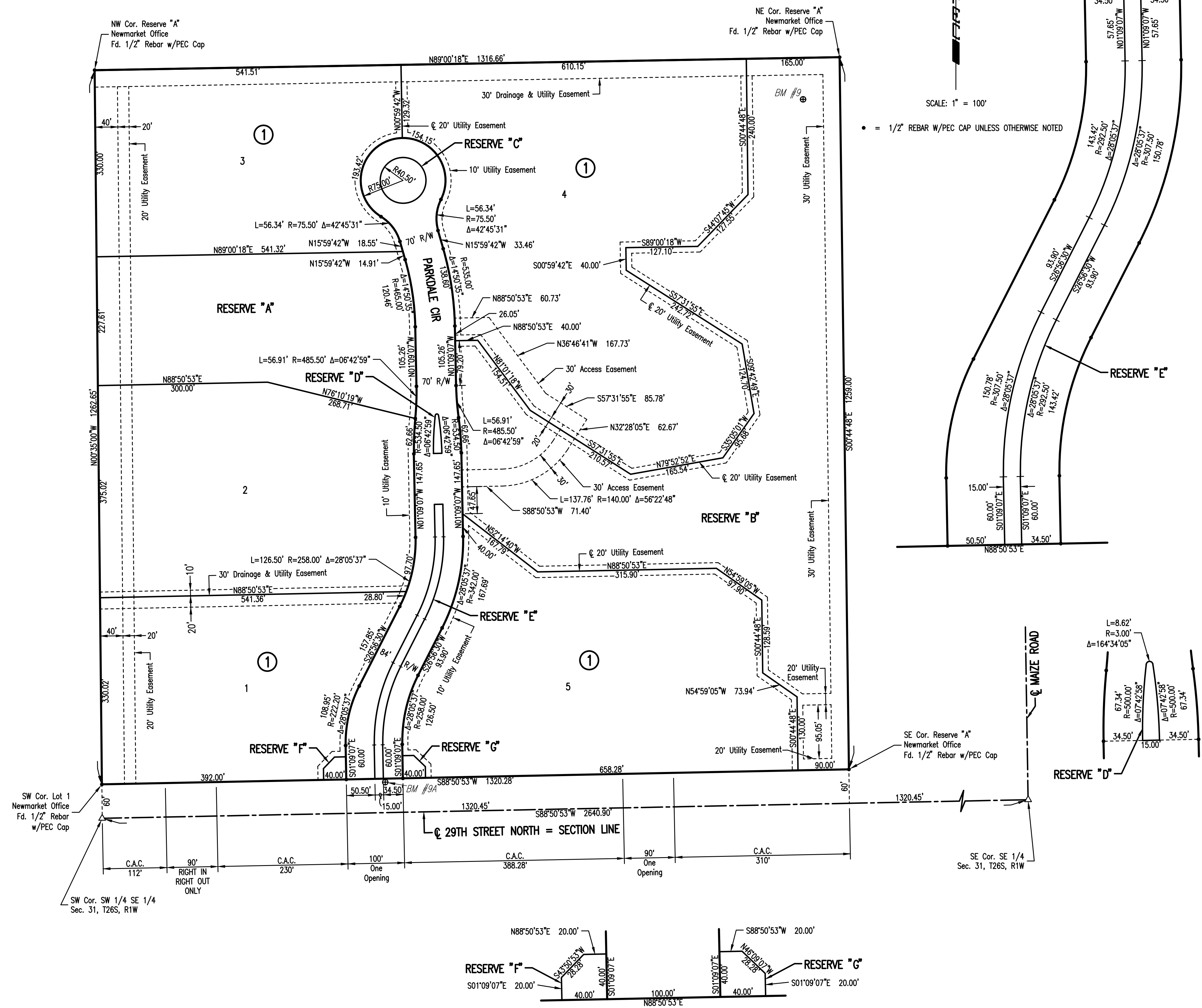


NEWMARKET OFFICE 2ND

AN ADDITION TO WICHITA, SEDGWICK COUNTY, KANSAS



Sowed 05-09-2011 1:33:18 PM by REJ
 Plot Scale 1:100 05-10-2011 10:21:55 AM by REJ
 CR 2011\1114\002\1114-002-C-Plot

No.	Revision	By	Date
NEWMARKET OFFICE 2ND - PHASE 1 WATERLINE IMPROVEMENTS PLAT JAMES L. ARMOUR, P.E. - CITY ENGINEER CITY OF WICHITA PROJECT NO. 448-90523			
PEC PROFESSIONAL ENGINEERING CONSULTANTS, P.A. 303 SOUTH TOPEKA WICHITA, KS 67202 316-262-2891 www.pec1.com			
Designed by	MDK	Job No.	35-1114-002
Drawn by	CSL	Date	JANUARY 2011
			Sht. 6 of 11