

Lat. 511, Southwest Interceptor, SANITARY SEWER IMPROVEMENTS

to serve

KOKER ADDITION

CITY OF WICHITA, KANSAS

James L. Armour, P.E. City Engineer

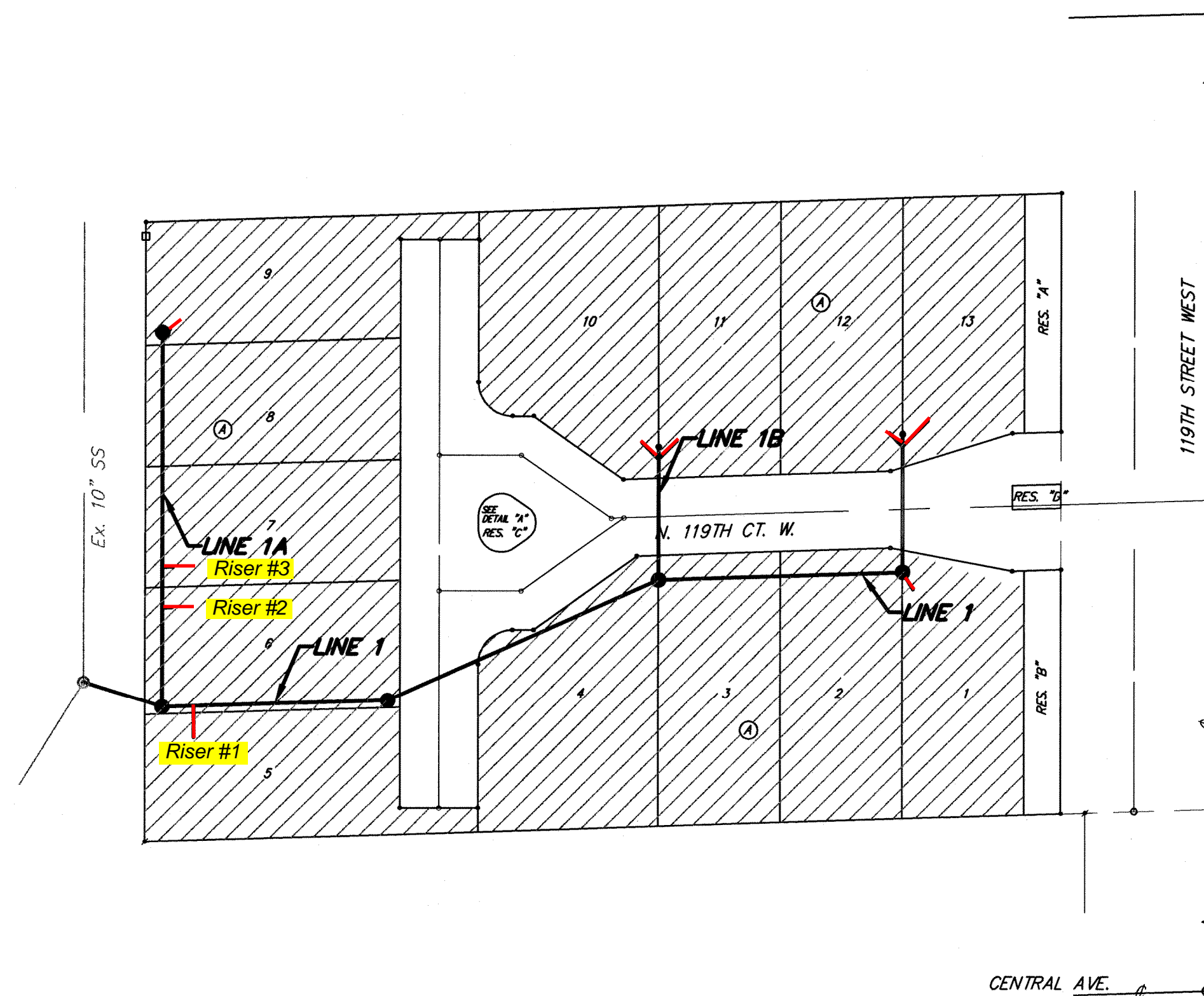
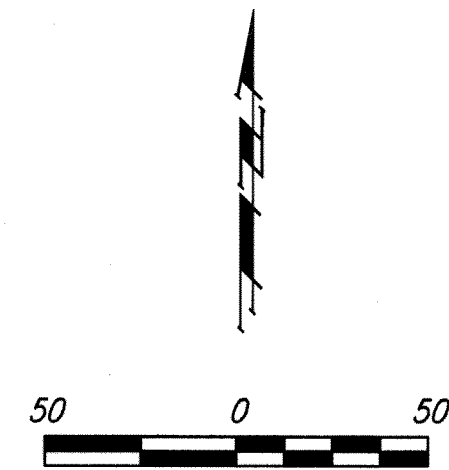
Project Number

468-84145

O.C.A. Number

744315

Nowak Construction - Contractor
K. Kerns - City of Wichita, Field Project Engr.
S. Cody - City of Wichita, Inspector
Stubs and Risers
As-built
Release Date: 12/18/2010
pdf: APROSas 6/2/2011



GENERAL NOTES:

- Contractor will be required to provide notice to utility companies a minimum of twenty-four (24) hours prior to any excavation, as follows:

Kansas One-Call 687-2470

The Contractor must notify the following in case of an emergency:

Cox Communications	262-4270
Kansas Gas Service	1-888-482-4950
Westar Energy	383-8650
Black Hills Energy	1-800-694-8989
ATT	268-2008
City of Wichita Water Dept.	268-4563
City of Wichita Sewer Maint.	268-4024
City of Wichita Storm Sewer Maint.	268-4090
City of Wichita Traffic Maint.	268-4034

- Utility service lines, poles, valve boxes, meters, and etcetera are to be adjusted as necessary by others prior to construction unless the plans specifically call for their adjustment by the Contractor or unless the plans specifically identify a utility to be adjusted by its owner during construction. Existing utilities and their location, as shown on the plans, represent the best information obtainable for design. The Contractor will be required to work around existing utilities within the right-of-way which do not conflict with proposed construction.

- Rubble from the removal of miscellaneous structures and excess excavation which is to be wasted shall be disposed of on sites to be provided by the Contractor. These sites shall be approved by the Engineer as to suitability, appearance and site location. Locations, in the opinion of the Engineer, that will leave an unsightly appearance will not be approved. All disposal sites must be approved by the Kansas Department of Health and Environment. Material either stockpiled or disposed of in a flood plain would require a Kansas State Board of Agriculture permit. Any material dumped in waters of the United States or wetlands is subject to U.S. Corps. of Engineers permitting regulations. Any material buried or stockpiled beyond approved construction limits would require additional archaeological investigations unless buried in a previously approved borrow location.

- Trees and shrubs in public right-of-way which are in direct conflict with proposed new construction shall be removed by the Contractor with the Engineer's approval. Trees and shrubs which are not in direct conflict with proposed new construction shall be saved and protected from damage.

- The Contractor shall give all property owners and/or tenants of developed property abutting the construction of this project a minimum of ten (10) days advance notice prior to start of construction.

- All Risers shall be constructed using Method "B."

- The Contractor shall be responsible for preserving property irons. The Contractor will be required to re-establish any property irons which are damaged or destroyed by his construction operations. Such irons shall be re-established by a licensed land surveyor in accordance with state laws.

- All existing and proposed erosion control measures including silt fencing, erosion control mat, straw bales, inlet barriers, and const. entrance shall be maintained throughout construction by the contractor and until project is accepted by the City of Wichita. The on-site engineer shall complete weekly reports on the status of erosion control measures. The contractor shall be required to comply with maintenance and/or replacement of erosion control measures as determined by the on-site engineer until project is accepted by City of Wichita. Maintenance and/or replacement of erosion control measures to be paid by L.S. bid item "Site Restoration."

- All excess excavation shall remain on-site and shall be stockpiled or spread at a location determined by the engineer.

- The Contractor shall be responsible for maintaining continuous flow of sewage through construction. Contractor's proposed method for maintaining sewage flow shall be approved by the Engineer. Cost of maintaining flow of sewage through construction will not be paid for directly and this cost shall be considered as subsidiary to the other pay items of work.

- When connecting to existing manhole or stub, the contractor shall reshape manhole bottom or adjust the existing stub's alignment or elevation as necessary. Cost shall be subsidiary to project.

- All areas disturbed during construction shall be seeded at 300 lbs./acre with Rye Grass immediately following construction in that area unless noted otherwise. Contractor shall prepare ground per City Specifications.

- Contractor shall grade around exposed manholes at a 1:1 slope. Manholes set lower than existing grade shall have a 9" berm constructed around manhole to prevent infiltration into sanitary sewer system. Cost of dirt, labor, equipment, etc. to be incidental to cost of manhole. Easements shall be graded with the street improvement project as part of the mass grading plan.

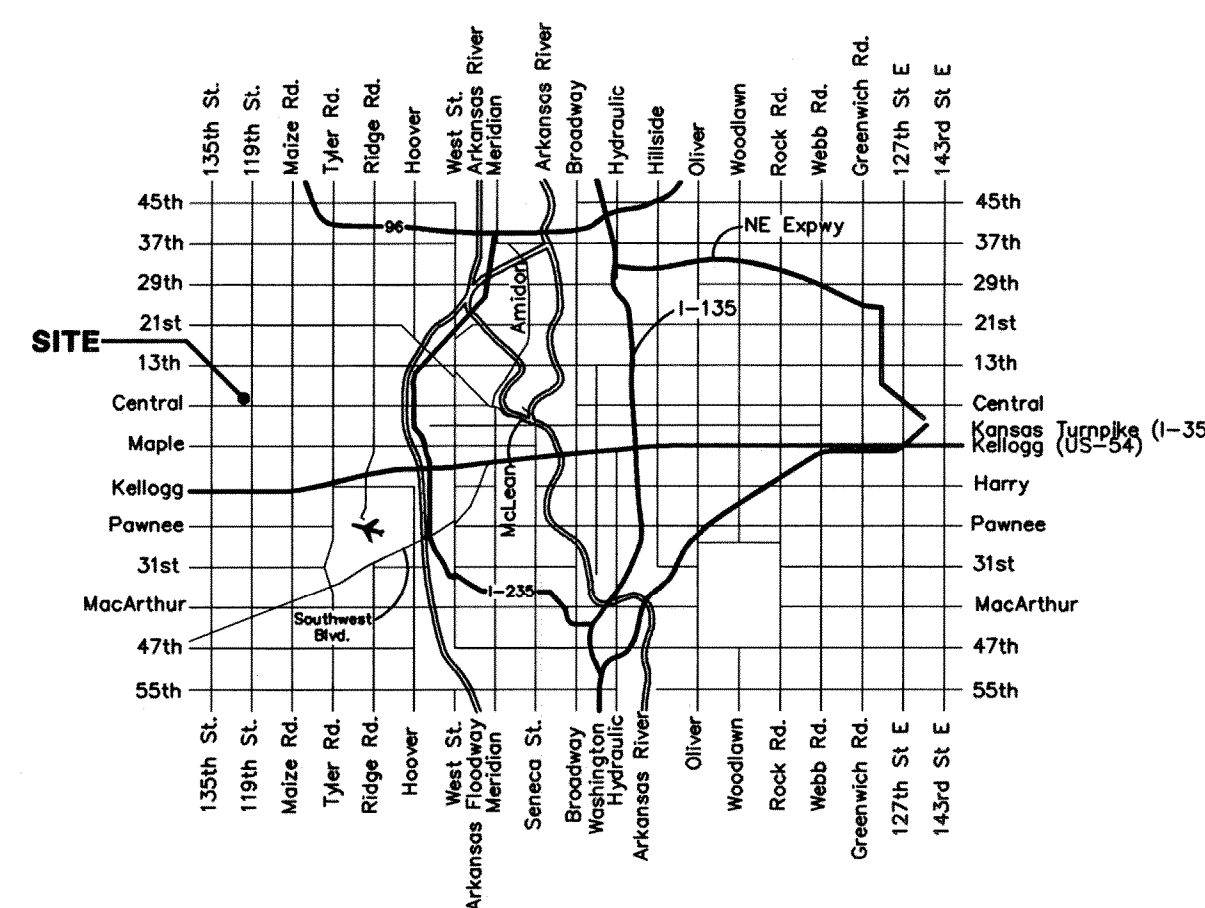
- The developer for this project is Clinton Koker, and may be reached at (316)721-2355.

Benchmarks

BM #1: COW Disc at 119th St. West & Lost Creek, 175' North of Last Creek Circle in SE corner of RCB, south end of hubguard.
Elev. = 1339.22 (NGVD29)

BM #2: "□" cut top of curb eastside of 119th adjacent to fire hydrant east of house #927.
Elev. = 1342.13 (NGVD29)

Benefit District



Vicinity Map

Sheet Index

Title Sheet	1
Line 1	2
Lines 1A & 1B	3
Standard Manhole Detail	4
Ring & Cover Detail	5
Riser Detail	6
Erosion Control Plan	7
Erosion Control Details	8-11
Cleanout Detail	12
Coordinate Sheet	13
Copy of Plat	14



Baughman Company, P.A. 315 Ellis St. Wichita, KS 67211 P 316-262-7271 F 316-262-0149
ENGINEERING | SURVEYING | PLANNING | LANDSCAPE ARCHITECTURE