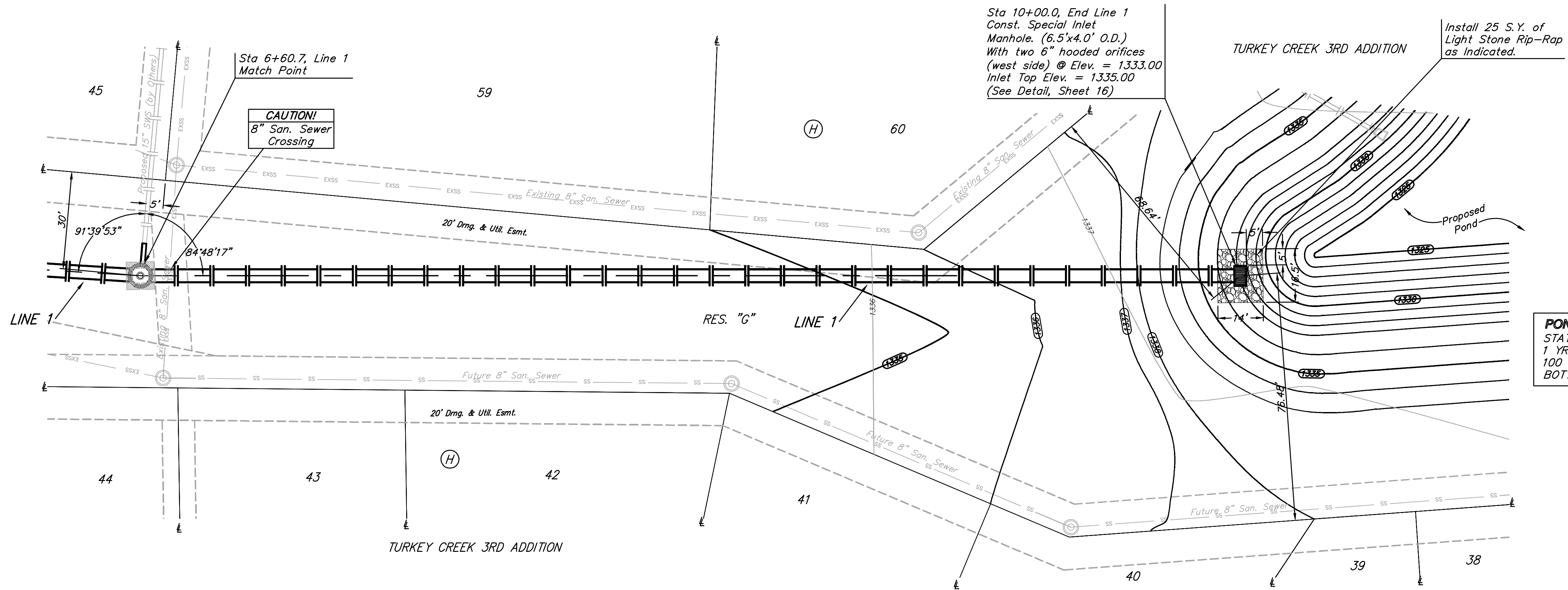
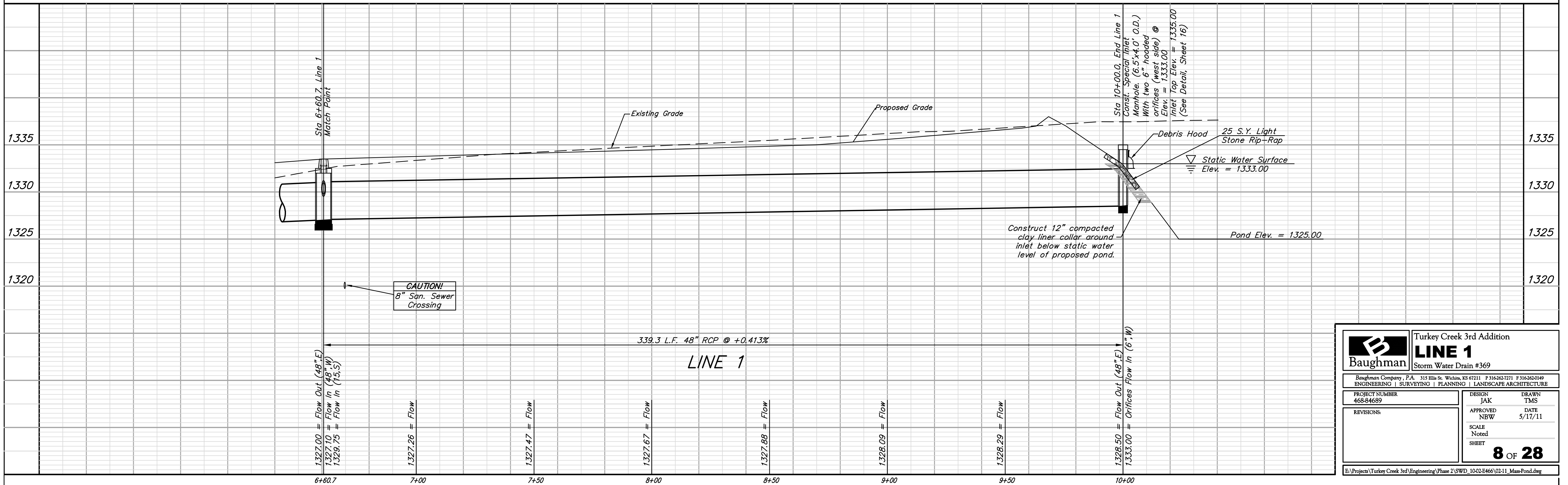


Benchmarks:  
 BM #1: 135th St. W. & Pawnee-  
 City of Wichita Benchmark Disc,  
 Northeast corner of intersection on  
 SW corner of concrete base of high  
 line pole.  
 Elev. = 1359.65 NGVD29

BM #2: City of Wichita Benchmark  
 Disc, 0.4 Mi. South of Kellogg on  
 135th St. W., west side of concrete  
 base for high line pole, west of  
 K.G.&E. Substation, 135± south of  
 railroad tracks on east side of  
 135th St. W.  
 Elev. = 1367.77 NGVD29



**POND DATA:**  
 STATIC POOL ELEVATION: 1333.0 MSL  
 1 YR D.W.S.: 1334.2  
 100 YR D.W.S.: 1337.8 MSL  
 BOTTOM ELEVATION: 1325.0 MSL



	<b>Turkey Creek 3rd Addition</b> <b>LINE 1</b> Storm Water Drain #369
	<small>Baughman Company, P.A. 315 Ellis St. Wichita, KS 67211 P 316-262-7271 F 316-262-0149          ENGINEERING   SURVEYING   PLANNING   LANDSCAPE ARCHITECTURE</small>
PROJECT NUMBER 468-84689	DESIGN JAK APPROVED NBW SCALE Noted SHEET
REVISIONS:	DRAWN TMS DATE 5/17/11
<b>8 OF 28</b>	