

Benchmarks:  
 BM #1: 135th St. W. & Pawnee-  
 City of Wichita Benchmark Disc,  
 Northeast corner of intersection on  
 SW corner of concrete base of high  
 line pole.  
 Elev. = 1359.65 NGVD29

BM #2: City of Wichita Benchmark  
 Disc, 0.4 Mi. South of Kellogg on  
 135th St. W., west side of concrete  
 base for high line pole, west of  
 k.G.&E. Substation, 135± south of  
 railroad tracks on east side of  
 135th St. W.  
 Elev. = 1367.77 NGVD29

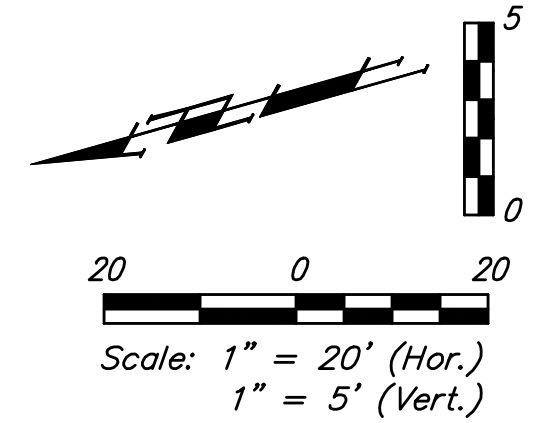
TURKEY CREEK 3RD ADDITION

\*NOTE:  
 20' Long Stub to be  
 paid as 1-36" Stub.  
 Plug and grout to be  
 incidental to cost of  
 stub

Sta 2+41.5 to Sta 2+83.8  
 Install 41.3 L.F. Flowable Fill  
 Per City Specifications.  
 Fill to Elev. 1328.95

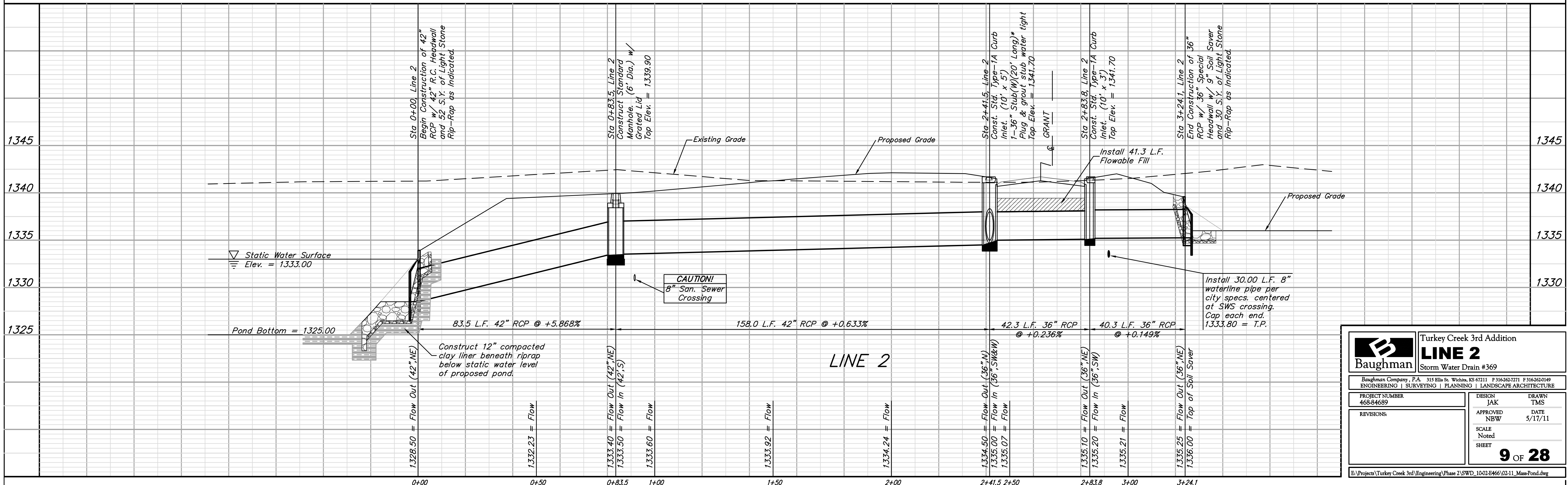
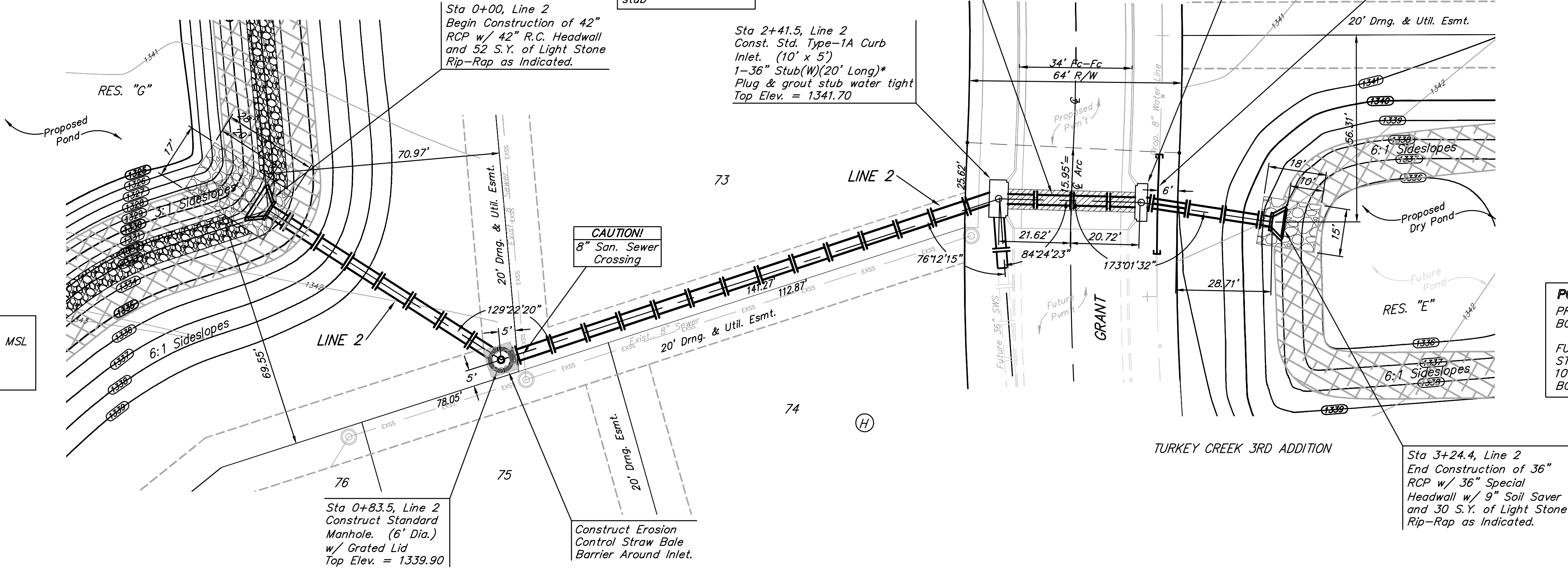
Sta 2+83.8, Line 2  
 Const. Std. Type-1A  
 Curb Inlet. (10' x 3')  
 Top Elev. = 1341.70

Install 30.00 L.F. 8"  
 waterline pipe per  
 city specs. centered  
 at SWS crossing.  
 Cap each end.  
 1333.80 = T.P.



**POND DATA:**  
 STATIC POOL ELEVATION: 1333.0 MSL  
 1 YR D.W.S.: 1334.2  
 100 YR D.W.S.: 1337.8 MSL  
 BOTTOM ELEVATION: 1325.0 MSL

**POND DATA:**  
 PROPOSED DRY DETENTION:  
 BOTTOM ELEVATION 1336.0-1337.0  
  
 FUTURE POND:  
 STATIC POOL ELEVATION: 1336.0 MSL  
 100 YR D.W.S.: 1339.2 MSL  
 BOTTOM ELEVATION: 1328.0 MSL



		<b>Turkey Creek 3rd Addition</b> <b>LINE 2</b> Storm Water Drain #369	
		<small>Baughman Company, P.A. 315 Ellis St. Wichita, KS 67211 P 316-262-7271 F 316-262-0149          ENGINEERING   SURVEYING   PLANNING   LANDSCAPE ARCHITECTURE</small>	
PROJECT NUMBER 468-84689	DESIGN JAK	DRAWN TMS	DATE 5/17/11
REVISIONS:	APPROVED NBW	SCALE Noted	SHEET <b>9 OF 28</b>
<small>E:\Projects\Turkey Creek 3rd\Engineering\Phase 2\SWD_1002E465\02-11_MassPond.dwg</small>			