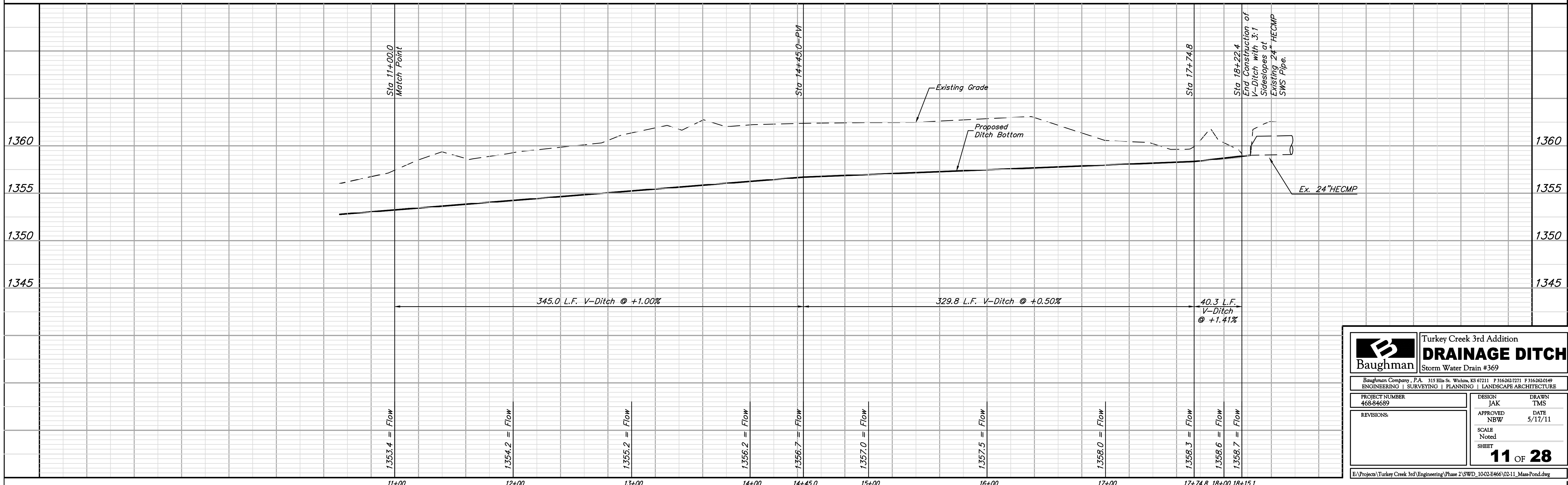
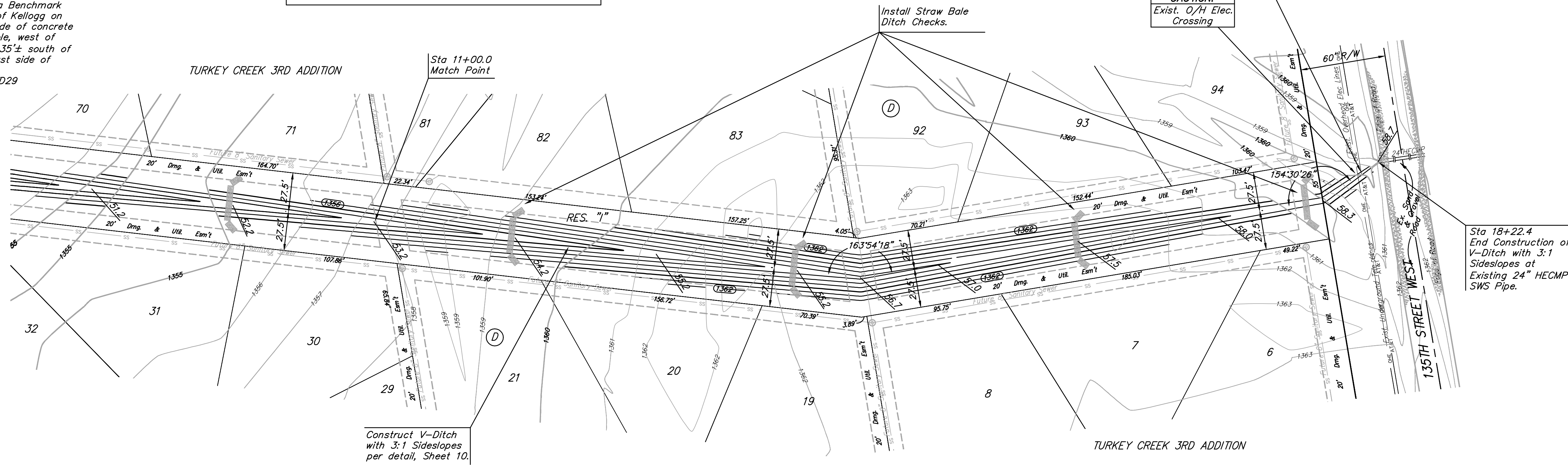
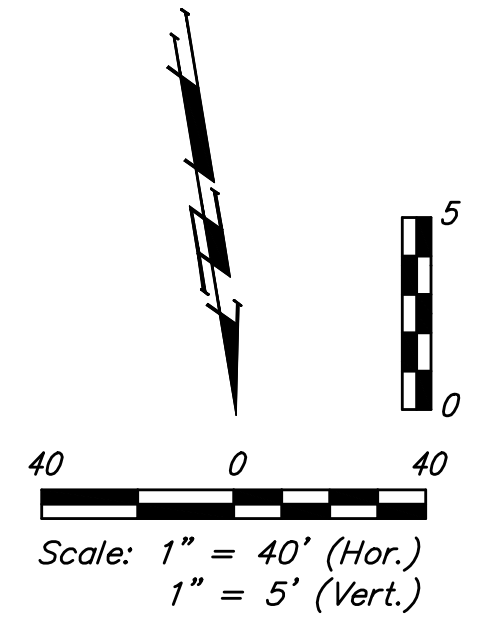


Benchmarks:
 BM #1: 135th St. W. & Pawnee-
 City of Wichita Benchmark Disc,
 Northeast corner of intersection on
 SW corner of concrete base of high
 line pole.
 Elev. = 1359.65 NGVD29

BM #2: City of Wichita Benchmark
 Disc, 0.4 Mi. South of Kellogg on
 135th St. W., west side of concrete
 base for high line pole, west of
 K.G.&E. Substation, 135± south of
 railroad tracks on east side of
 135th St. W.
 Elev. = 1367.77 NGVD29

All of Proposed Ditch shall be seeded and mulched as follows:
 (Permanent Seeding)
 SEED -- Kansas Premium Fescue Blend; 8#/1000 Sq. Ft.
 FERTILIZER -- 12-24-12 Ratio at 350 Lbs./Ac.
 MULCH -- 2 Tons Prairie Hay / Acre



		Turkey Creek 3rd Addition DRAINAGE DITCH Storm Water Drain #369	
		<small>Baughman Company, P.A. 315 Ellis St. Wichita, KS 67211 P 316-262-7271 F 316-262-0149 ENGINEERING SURVEYING PLANNING LANDSCAPE ARCHITECTURE</small>	
PROJECT NUMBER 468-84689	DESIGN JAK	DRAWN TMS	
REVISIONS:	APPROVED NBW	DATE 5/17/11	
	SCALE Noted	SHEET 11 OF 28	
<small>E:\Projects\Turkey Creek 3rd\Engineering\Phase 2\SWD_1002E466\02-11_MassPond.dwg</small>			