

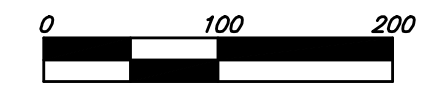
TURKEY CREEK 3RD ADDITION WICHITA, SEDGWICK COUNTY, KANSAS

BOARD OF COUNTY COMMISSIONERS
OF SEDGWICK COUNTY, KANSAS
(DOC.#/FLM-PC: 2878802)

BOARD OF COUNTY COMMISSIONERS
OF SEDGWICK COUNTY, KANSAS
(DOC.#/FLM-PC: 2878802)

BOARD OF COUNTY COMMISSIONERS
OF SEDGWICK COUNTY, KANSAS
(DOC.#/FLM-PC: 2878802)

MINIMUM BUILDING PAD ELEVATIONS FOR LOWEST OPENING TO THE STRUCTURES		ELEVATION
LOT	BLOCK	NOVD29
16-19, 21-36	A	1354.0
91-93, 106-108	A	1329.0
109-114	A	1330.0
115-117	A	1331.0
118-128	A	1333.0
129-133	A	1334.0
1-8, 13-20	F	1343.5
41-49	F	1343.0
2-9	H	1341.0
36-40	H	1341.0
60-64	H	1340.0
66-73	H	1340.0
75-77	H	1341.0

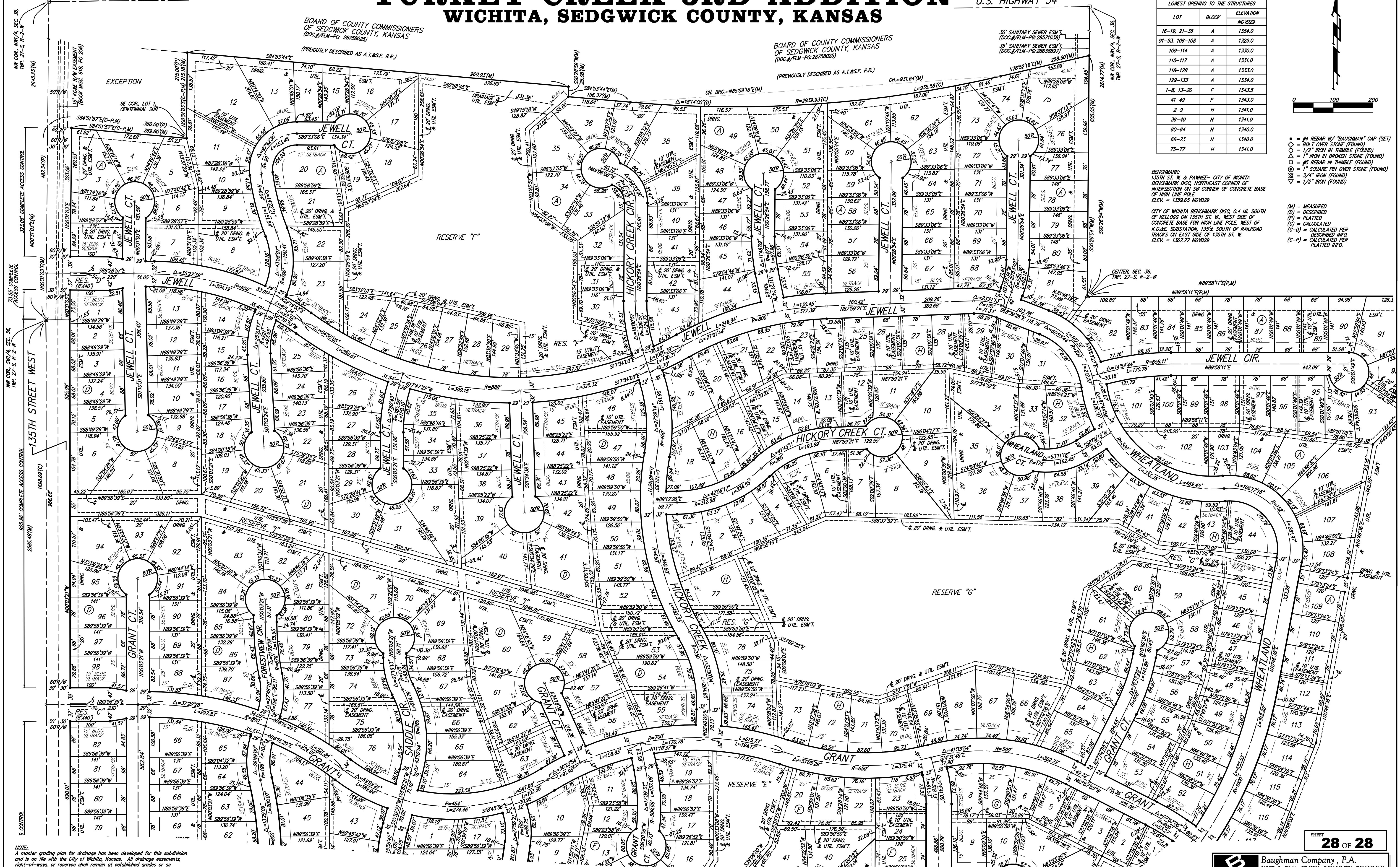


- = #4 REBAR W/ "DAUGHMAN" CAP (SET)
- = BOLT OVER STONE (FOUND)
- ◇ = 1/2" IRON N. TRIMBLE (FOUND)
- △ = 1" IRON IN BROKEN STONE (FOUND)
- ⊕ = #5 REBAR IN TRIMBLE (FOUND)
- ⊙ = 1" SQUARE PIN OVER STONE (FOUND)
- ▽ = 3/4" IRON (FOUND)
- ▽ = 1/2" IRON (FOUND)

BENCHMARK:
135TH ST. W. & PANNEE - CITY OF WICHITA
BENCHMARK DISC. NORTHEAST CORNER OF
INTERSECTION ON SW CORNER OF CONCRETE BASE
ELEV. = 1358.65 NOVD29

CITY OF WICHITA BENCHMARK DISC. 0.4 MI. SOUTH
OF KELLOGG ON 135TH ST. W., WEST SIDE OF
CONCRETE BASE FOR HIGH LINE POLE. WEST OF
K.C.R.C. SUBSTATION, 135.5' SOUTH OF RAILROAD
TRACKS ON EAST SIDE OF 135TH ST. W.
ELEV. = 1367.77 NOVD29

- (M) = MEASURED
- (D) = DESCRIBED
- (P) = PLATTED
- (C) = CALCULATED
- (C-D) = CALCULATED PER DESCRIBED INFO
- (C-P) = CALCULATED PER PLATTED INFO.



NOTE:
A master grading plan for drainage has been developed for this subdivision and is on file with the City of Wichita, Kansas. All drainage easements, right-of-ways, or reserves shall remain as established grades or as modified with the approval of the City Engineer of the City of Wichita, Kansas. No obstructions which impede the flow of this drainage system shall be allowed.