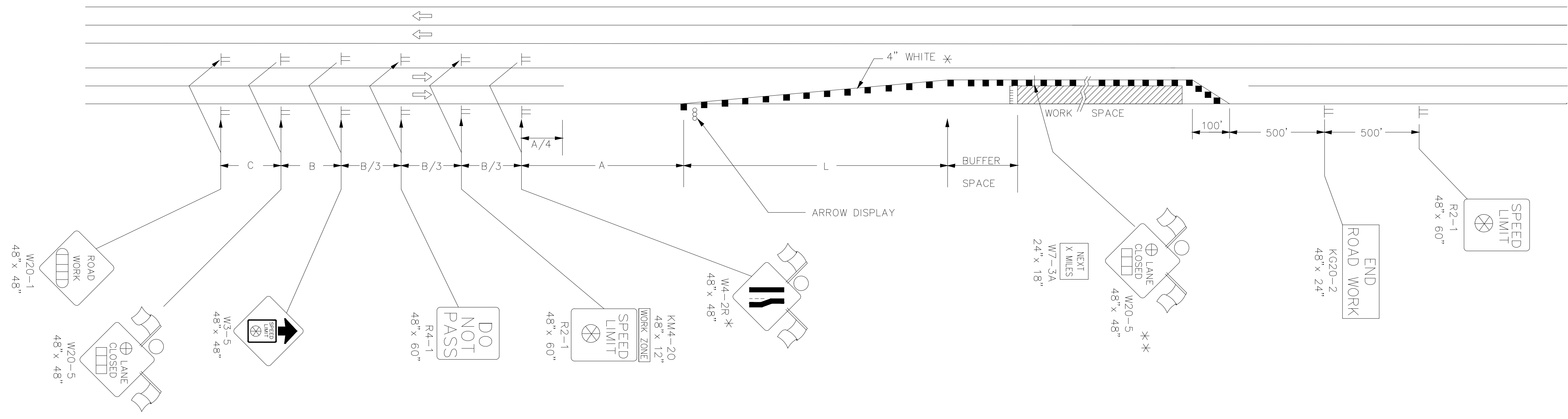


FHWA REG. NO.	STATE	PROJECT NO.	YEAR	SHEET NUMBER	TOTAL SHEETS
7	KANSAS	15-87 U-2192-01	2010	15	16

REFER TO STD. TE710 FOR ADDITIONAL INFORMATION ON TEMPORARY TRAFFIC CONTROL SIGNS AND SIGN SPACING.  
 REFER TO STD. TE704 FOR TYPE III BARRICADES.  
 REFER TO STD. TE702 FOR INFORMATION ON TAPERS AND CHANNELIZING DEVICES.  
 REFER TO STD. TE700 FOR LENGTH OF BUFFER SPACE.



LEFT-SIDE SIGNS SHALL BE OMITTED FOR A FOUR-LANE UNDIVIDED HIGHWAY.

\* FOR LEFT LANE CLOSURES USE W4-2L AND YELLOW EDGE LINE ALONG CHANNELIZING DEVICES.

\*\* THE W20-5 (LANE CLOSED) AND W7-3A (NEXT MILES) SIGNS SHOULD BE PLACED AT 2 MILE INCREMENTS ON A PROJECT OF 4 MILES OR LONGER.

- ⏏ Type III Barricades
- X Length To The Nearest Whole Mile
- Channelizing Device
- ▭ AHEAD, 1500 FT, OR 1 MILE
- ▭ AHEAD, 1000 FT, 1500 FT, OR 1/2 MILE
- ⊗ Speed To Be Determined By The Engineer
- Type "A" Low Intensity Warning Light
- ⊕ Right of Left

KANSAS DEPARTMENT OF TRANSPORTATION  
 TYPICAL TRAFFIC CONTROL  
 FOUR-LANE HIGHWAY  
 ONE LANE CLOSED

TE744

DESIGNED	APP'D	QUANTITIES	TRACED
DESIGN CK.	DETAIL CK.	QUAN. CK.	TRACE CK.