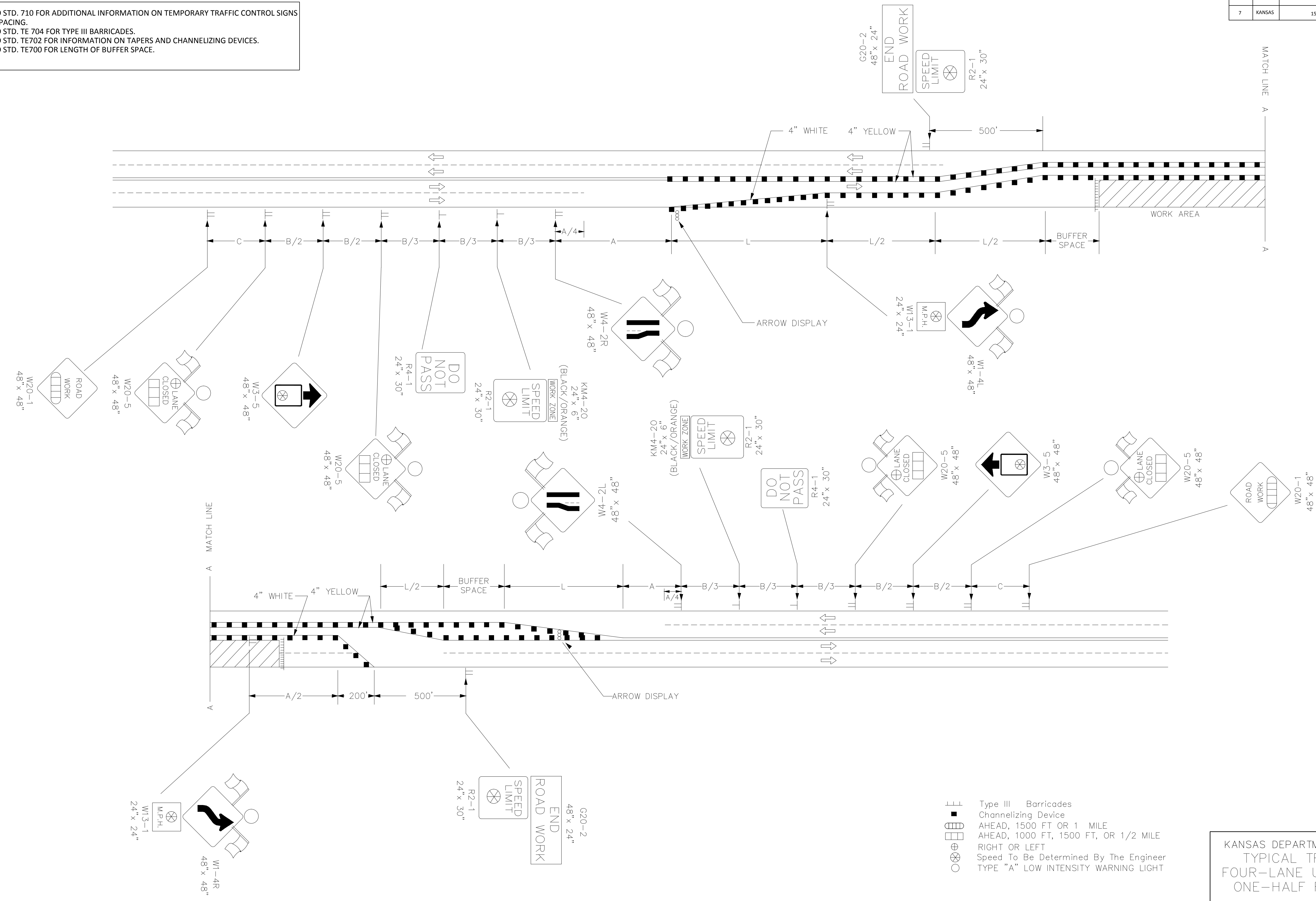


FHWA REG. NO.	STATE	PROJECT NO.	YEAR	SHEET NUMBER	TOTAL SHEETS
7	KANSAS	15-87 U-2192-01	2010	16	16

REFER TO STD. 710 FOR ADDITIONAL INFORMATION ON TEMPORARY TRAFFIC CONTROL SIGNS & SIGN SPACING.
REFER TO STD. TE 704 FOR TYPE III BARRICADES.
REFER TO STD. TE702 FOR INFORMATION ON TAPERS AND CHANNELIZING DEVICES.
REFER TO STD. TE700 FOR LENGTH OF BUFFER SPACE.



- ⊥ Type III Barricades
- Channelizing Device
- ⊕ AHEAD, 1500 FT OR 1 MILE
- ⊕ AHEAD, 1000 FT, 1500 FT, OR 1/2 MILE
- ⊕ RIGHT OR LEFT
- ⊕ Speed To Be Determined By The Engineer
- TYPE "A" LOW INTENSITY WARNING LIGHT

KANSAS DEPARTMENT OF TRANSPORTATION
TYPICAL TRAFFIC CONTROL
FOUR-LANE UNDIVIDED HIGHWAY
ONE-HALF ROADWAY CLOSED

TE748		APPD	
DESIGNED	DETAILED	QUANTITIES	TRACED
DESIGN CK.	DETAIL CK.	QUAN. CK.	TRACE CK.