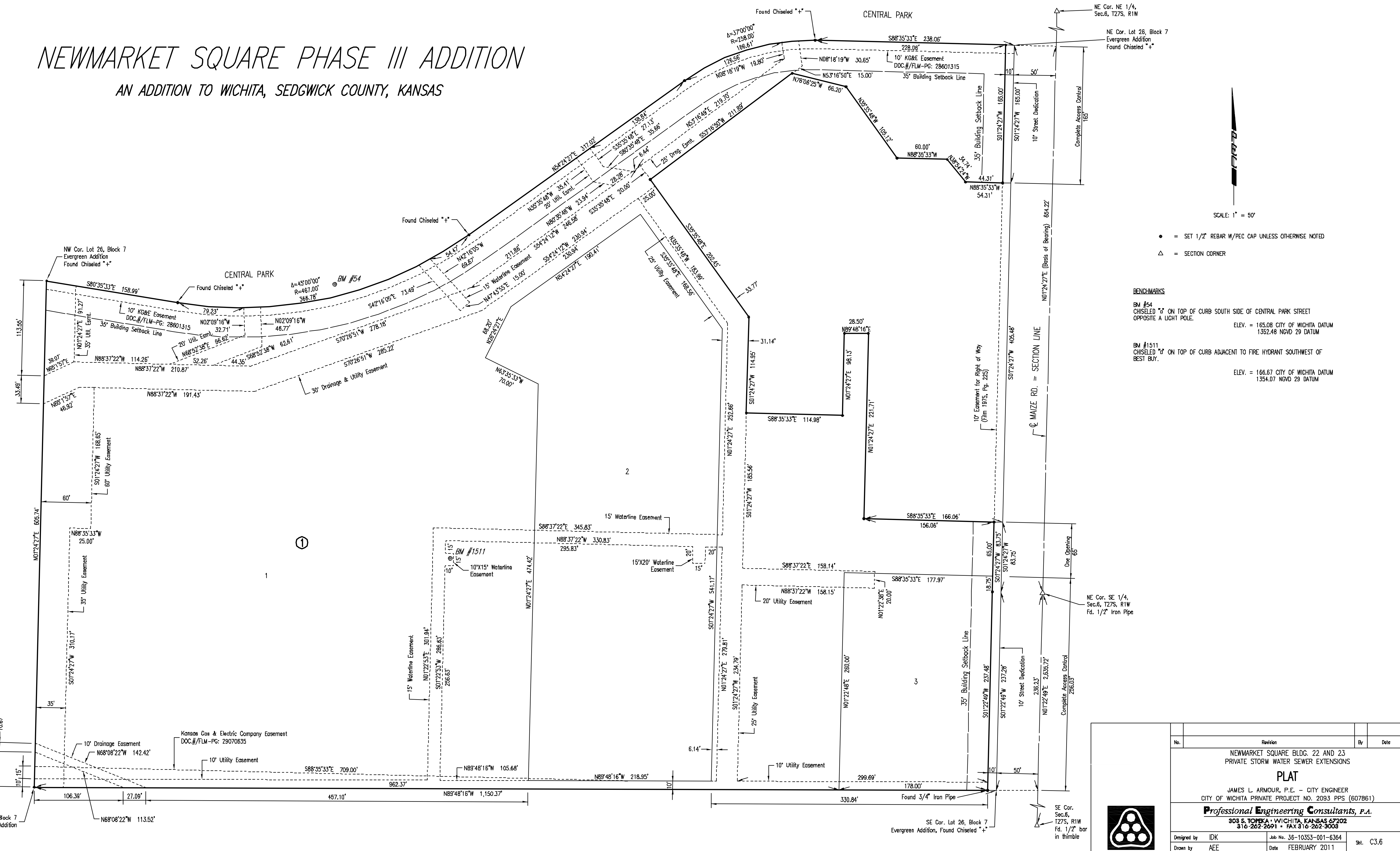


# NEWMARKET SQUARE PHASE III ADDITION

## AN ADDITION TO WICHITA, SEDGWICK COUNTY, KANSAS



SCALE: 1" = 50'

● = SET 1/2" REBAR W/PEC CAP UNLESS OTHERWISE NOTED  
 △ = SECTION CORNER

**BENCHMARKS**

BM #54  
 CHISELED "I" ON TOP OF CURB SOUTH SIDE OF CENTRAL PARK STREET  
 OPPOSITE A LIGHT POLE.  
 ELEV. = 165.08 CITY OF WICHITA DATUM  
 1352.48 NGVD 29 DATUM

BM #1511  
 CHISELED "I" ON TOP OF CURB ADJACENT TO FIRE HYDRANT SOUTHWEST OF  
 BEST BUY.  
 ELEV. = 166.67 CITY OF WICHITA DATUM  
 1354.07 NGVD 29 DATUM

NE Cor. SE 1/4,  
 Sec. 6, T27S, R1W  
 Fd. 1/2" Iron Pipe

SE Cor.  
 Sec. 6,  
 T27S, R1W  
 Fd. 1/2" bar  
 in thimble

No.	Revision	By	Date
	NEWMARKET SQUARE BLDG. 22 AND 23 PRIVATE STORM WATER SEWER EXTENSIONS		
<b>PLAT</b>			
JAMES L. ARMOUR, P.E. - CITY ENGINEER CITY OF WICHITA PRIVATE PROJECT NO. 2093 PPS (607B61)			
<b>Professional Engineering Consultants, P.A.</b> 303 S. TOPEKA - WICHITA, KANSAS 67202 316-262-2691 • FAX 316-262-3008			
Designed by	IDK	Job No. 36-10353-001-6364	Sht. C3.6
Drawn by	AEE	Date FEBRUARY 2011	

Plot Scale 1:50 02-01-2011 11:43:50 PM by AARON E. EARLEYWINE  
 Q:\2010\10353\001\PPS\10353-C3.6-PLAT