

STORM WATER DRAIN #371
to serve

STONEBRIDGE 2ND ADDITION - PH. II
STONEBRIDGE 3RD ADDITION
CITY OF WICHITA, KANSAS

James L. Armour, P.E. City Engineer

Project Number

468-84734

O.C.A. Number

751496

Benchmarks

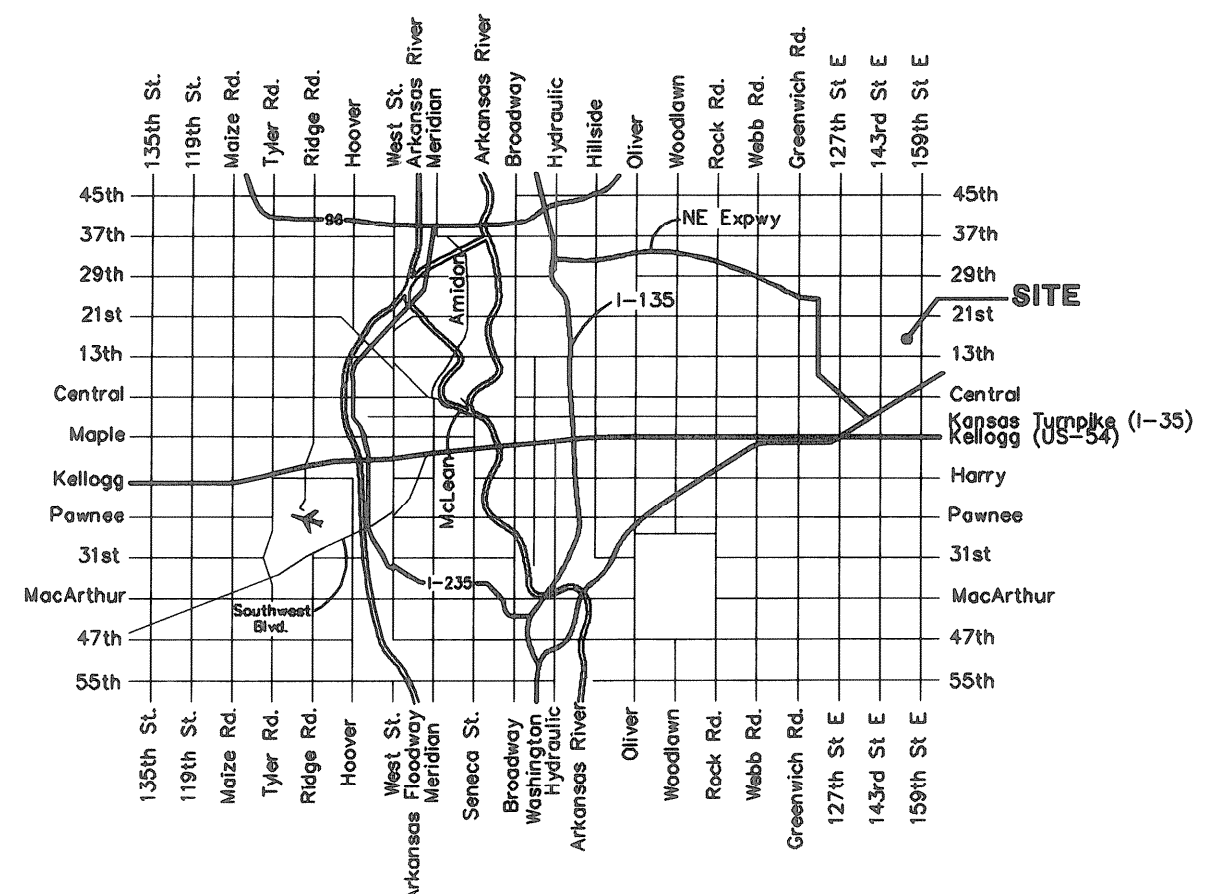
BM #1: "□" Cut on top of curb, east side of Ridgehurst, adjacent to common front lot corner of Lots 6 & 7, Block E, Stonebridge 2nd Addition.
ELEV. = 1348.51 NGVD29

BM #2: "□" Cut on top of curb, south side of Sundance, near end of pavement in front of Lot 6, Block 3, Savannah at Castle Rock Ranch 7th Addition.
ELEV. = 1347.33 NGVD29

BM #3: "□" Cut on top of hubguard at NE corner of RCBC 350' west of the east property line of Stonebridge 2nd Addition.
ELEV. = 1333.58 NGVD29

Sheet Index

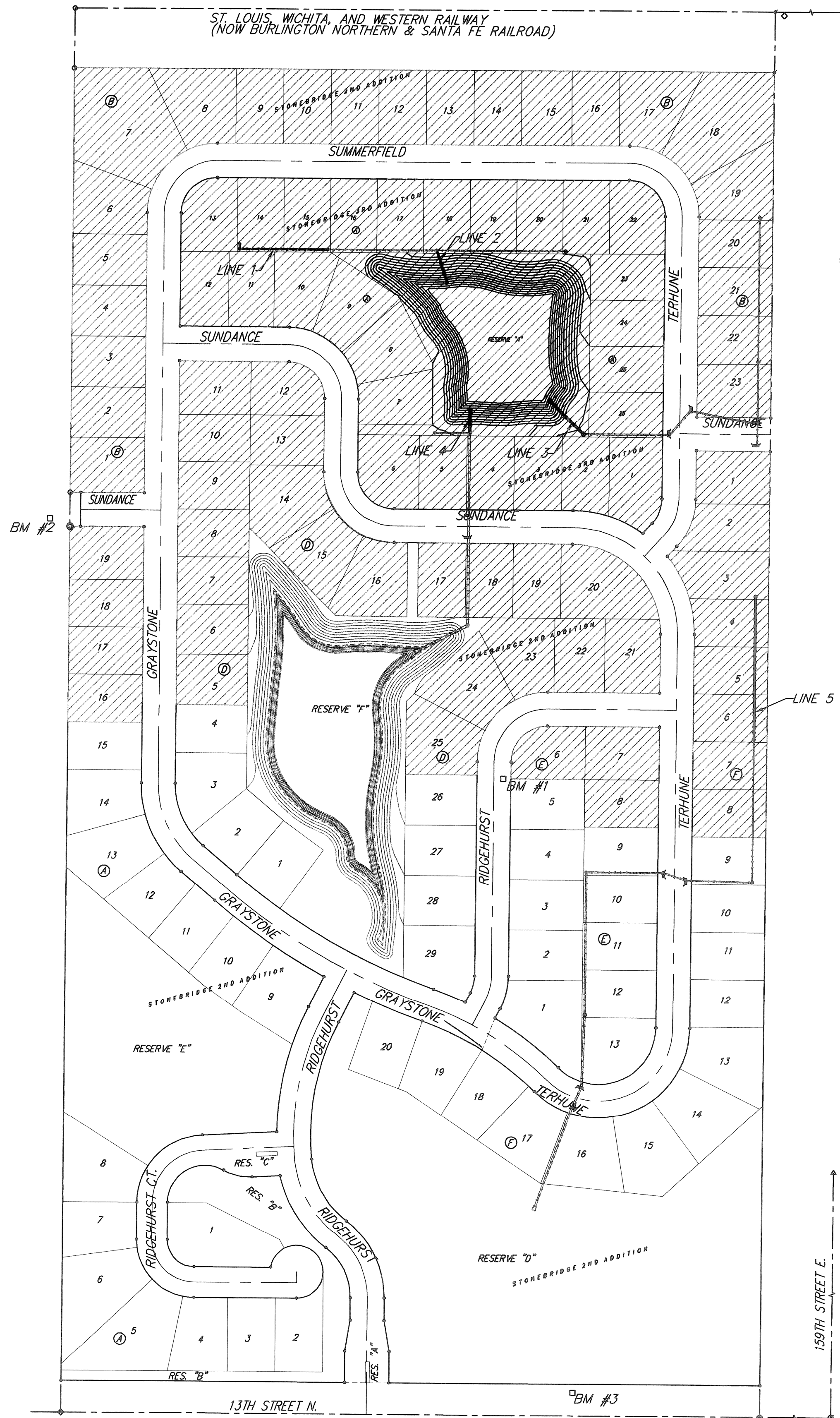
Title Sheet	1
Line 1	2
Lines 2, 3 & 4	3
Line 5	4
Pipe Abandon/Removal	5
Standard Manhole Detail	6
Ring & Cover Detail	7
Special Yard Inlet Detail	8
Std. KDOT Inlet	9
Headwall Detail	10-11
Miscellaneous Details	12
Mass Grading Detail	13
Mass Grading Plan	14
Pond Plan	15
Pond Cross Sections	16
Erosion Control BMP Details	17-20
Coordinate Sheet	21
Copy of Plat	22-23



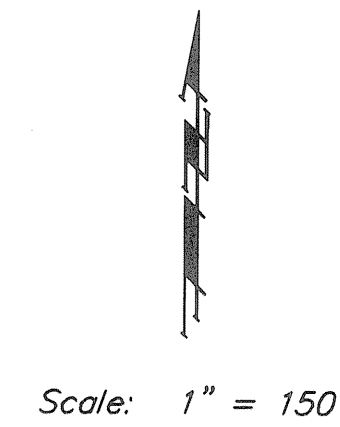
Vicinity Map



Baughman Company, P.A. 315 Ellis St. Wichita, KS 67211 P 316-262-7271 F 316-262-0149
ENGINEERING | SURVEYING | PLANNING | LANDSCAPE ARCHITECTURE



Benefit District



GENERAL NOTES:

- Contractor will be required to provide notice to utility companies a minimum of seventy-two (72) hours prior to any excavation, as follows:
Kansas One-Call 687-2470
The Contractor must notify the following in case of an emergency:
Cox Communications 262-4270
Kansas Gas Service 1-888-482-4950
Westar Energy 383-8650
Black Hills Energy 1-800-303-0357
AT&T 268-2245
City of Wichita Water Dept. 268-4563
City of Wichita Sewer Maint. 268-4024
City of Wichita Storm Sewer Maint. 268-4090
City of Wichita Traffic Maint. 268-4034
Conoco Phillips Pipeline Co. 1-877-267-2290
Southern Star Pipeline Co. 529-6600
Kinder-Morgan Pipeline Co. 1-888-844-5658
- Utility service lines, poles, valve boxes, meters, and etcetera are to be adjusted as necessary by others prior to construction unless the plans specifically call for their adjustment by the Contractor or unless the plans specifically identify a utility to be adjusted by its owner during construction. Existing utilities and their location, as shown on the plans, represent the best information obtainable for design. The Contractor will be required to work around existing utilities within the right-of-way which do not conflict with proposed construction.
- Rubble from the removal of miscellaneous structures and excess excavation which is to be wasted shall be disposed of on sites to be provided by the Contractor. These sites shall be approved by the Engineer as to suitability, appearance and site location. Locations, in the opinion of the Engineer, that will leave an unsightly appearance will not be approved. All disposal sites must be approved by the Kansas Department of Health and Environment. Material either stockpiled or disposed of in a flood plain would require a Kansas State Board of Agriculture permit. Any material dumped in waters of the United States or wetlands is subject to U.S. Corps. of Engineers permitting regulations. Any material buried or stockpiled beyond approved construction limits would require additional archaeological investigations unless buried in a previously approved borrow location.
- Trees and shrubs in public right-of-way which are in direct conflict with proposed new construction shall be removed by the Contractor with the Engineer's approval. Trees and shrubs which are not in direct conflict with proposed new construction shall be saved and protected from damage.
- The Contractor shall give all property owners and/or tenants of developed property abutting the construction of this project a minimum of ten (10) days notice prior to start of construction.
- The Contractor shall be responsible for preserving property irons. The Contractor will be required to re-establish any property irons which are damaged or destroyed by his construction operations. Such irons shall be re-established by a licensed land surveyor in accordance with state laws.
- All existing and proposed erosion control measures including silt fencing, erosion control mat, straw bales, inlet barriers, and const. entrance shall be maintained throughout construction by the contractor and until project is accepted by the City of Wichita. The on-site engineer shall complete weekly reports on the status of erosion control measures. The contractor shall be required to comply with maintenance and/or replacement of erosion control measures as determined by the on-site engineer until project is accepted by City of Wichita. Maintenance and/or replacement of erosion control measures to be paid by L.S. bid item "Maintain Existing BMP's".
- All excess excavation shall be removed from site, the cost of which shall be included in "Site Restoration".
- All areas disturbed during construction shall be seeded as indicated on Pond Plan.
- At conclusion of construction, an as-built survey will be completed by the engineer. The contractor will be required to finish and smooth grade all locations as necessary that are not within $\pm 0.1'$ of street r/w plan grade and easements or within $\pm 0.3'$ of plan grade outside of street r/w and easements. The contractor shall include all costs associated with the regrading and/or remediation in the bid item "Mass Grading."
- The developer for this project is FLKS Land Development (316) 641-3268.
- All pipes abandoned or removed shall have all open ends capped and water-tight sealed.
- Contractor to contact Baughman Company for possible off-site locations for excess excavation prior to bid.

