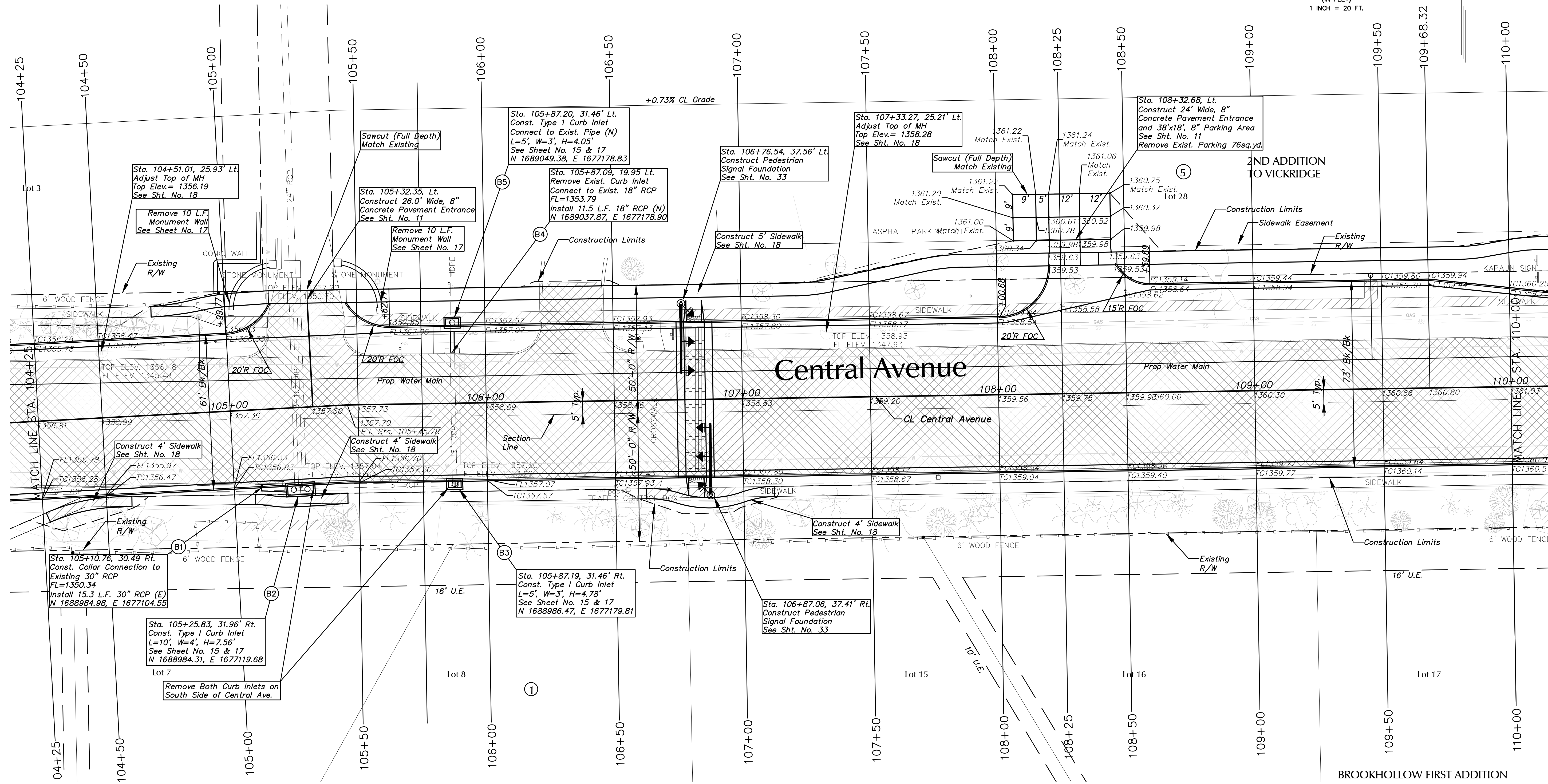
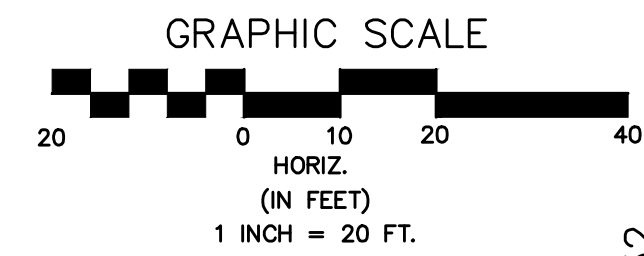


NOTE: Remove Portion of Stone Monument wall within Central Avenue R/W.
Salvage stones in good condition and stockpile on Kapaun Mt. Carmel property.
Contact Kapaun Mt. Carmel President, Michael Burrus at 316-634-0315 ext. 141 for information on where to stockpile stones.



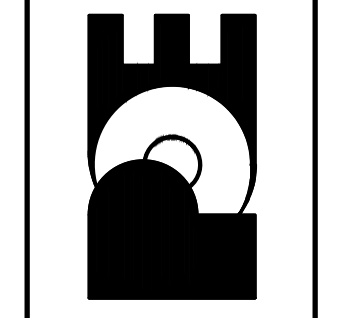
LEGEND

	Asphalt Removal
	Sidewalk Removal

No.	Date	By	Approved	Revision

CENTRAL AVENUE
ROCK ROAD TO WEBB ROAD
PAVEMENT PLAN 104+25 TO 110+00
CITY OF WICHITA, KANSAS
JAMES L. ARMOUR, P.E. - CITY ENGINEER

POE & ASSOCIATES, INC.
CONSULTING ENGINEERS
5940 E. Central, Suite 200 • Wichita, KS 67208-4242
Phone 316/685-4114 • FAX 316/685-4444



FINAL

Engineer: P. FERGUSON
Designer: P. FERGUSON/M. TUCKER
Poe Job No.: 1972
Date: MARCH 2011