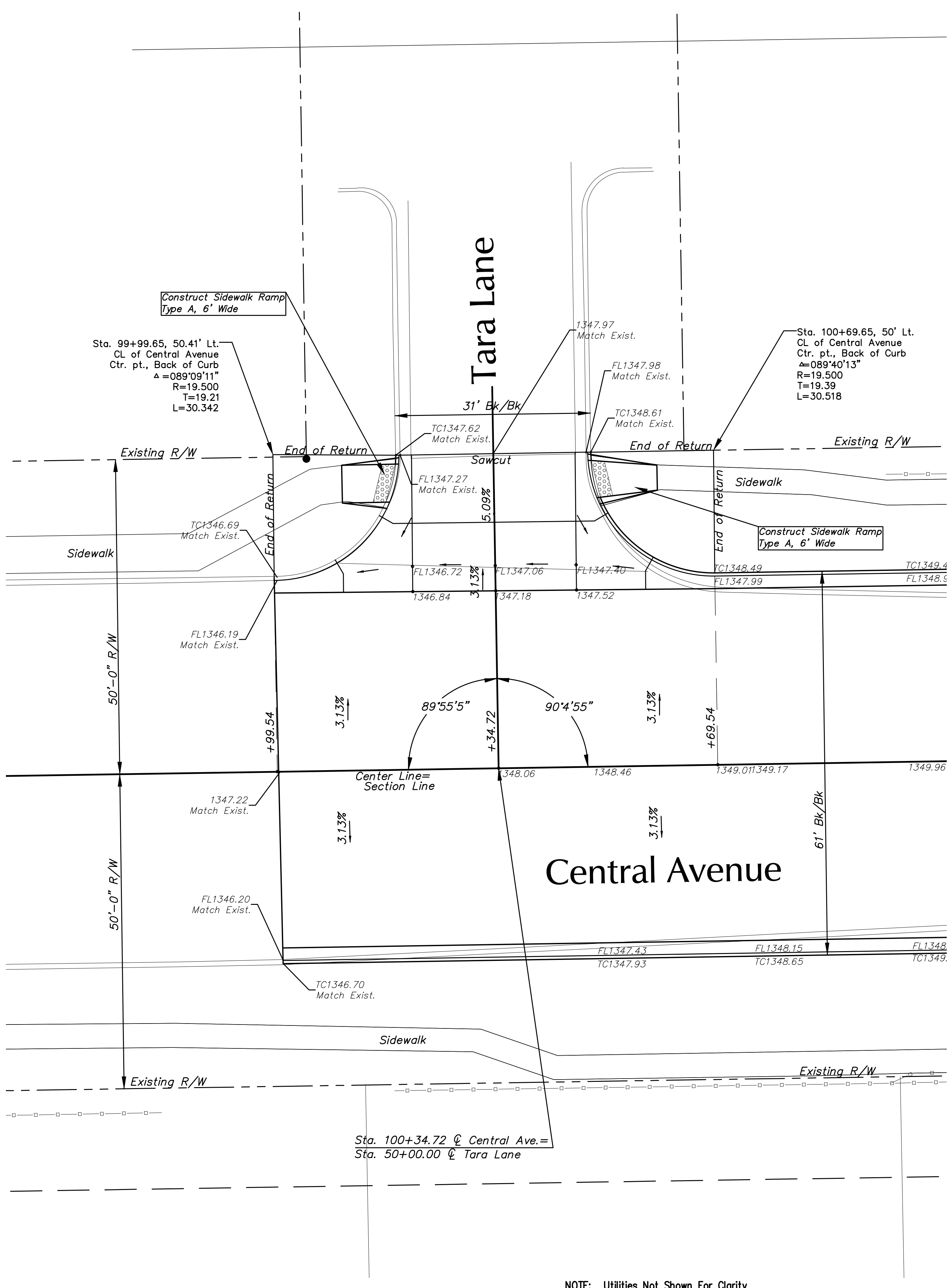
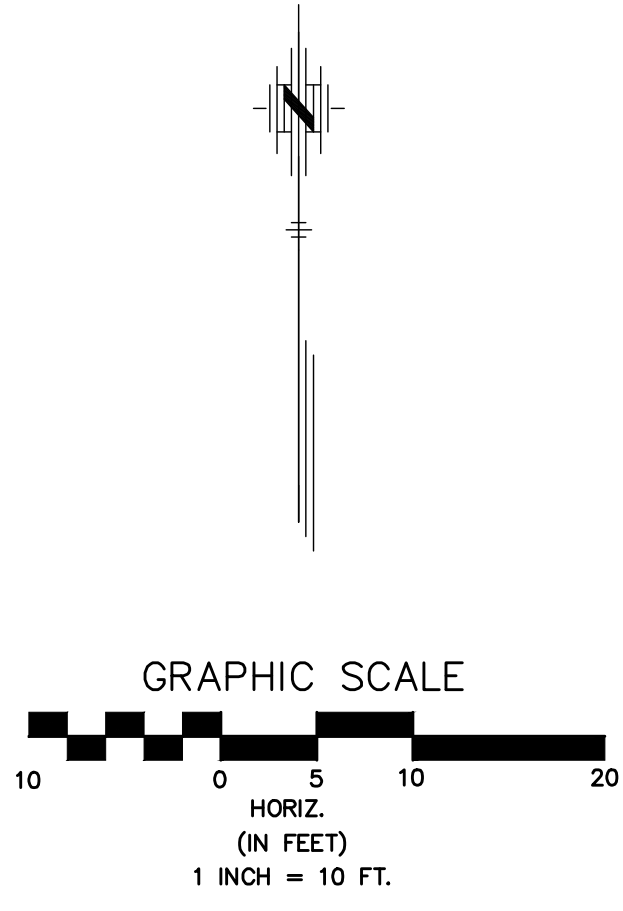
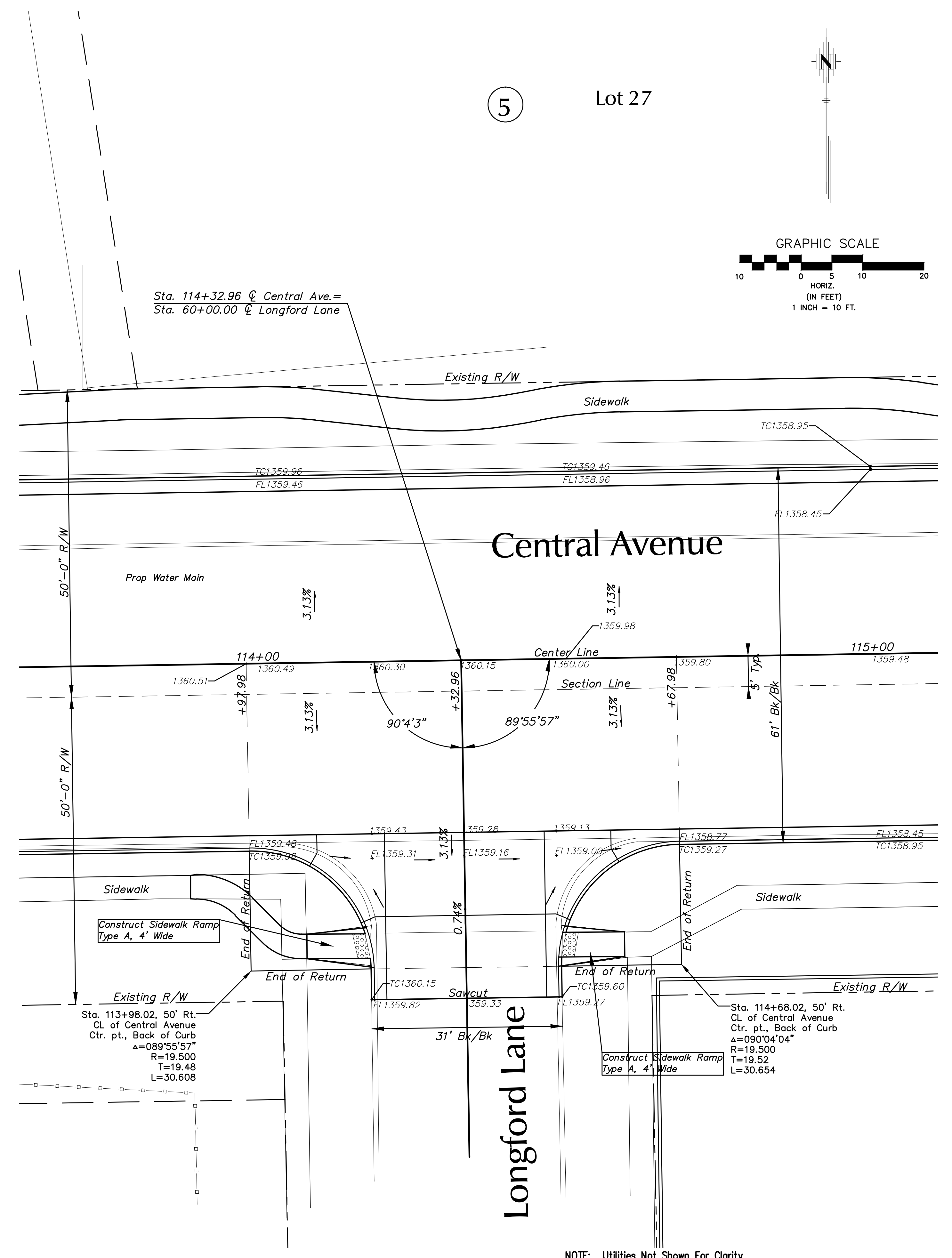


5

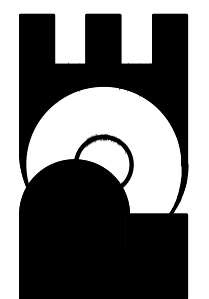
Lot 27



NOTE: Utilities Not Shown For Clarity



NOTE: Utilities Not Shown For Clarity

No.	Date	By	Approved	Revision
<b>CENTRAL AVENUE</b> ROCK ROAD TO WEBB ROAD INTERSECTIONS AT TARA LN. & LONGFORD LANE CITY OF WICHITA, KANSAS JAMES L. ARMOUR, P.E. - CITY ENGINEER				
<b>POE &amp; ASSOCIATES, INC.</b> CONSULTING ENGINEERS 5940 E. Central, Suite 200 • Wichita, KS 67208-4242 Phone 316/685-4114 • FAX 316/685-4444				
				
<b>FINAL</b>				
Engineer:	P. FERGUSON			
Designer:	P. FERGUSON/M. TUCKER			
Proj. Job No.:	1972			
Date:	MARCH 2011			
Sheet	7 of 69			