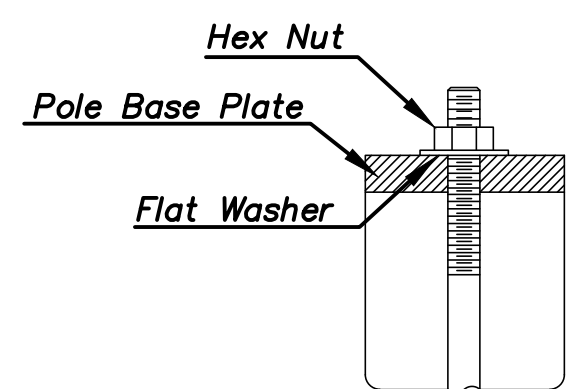
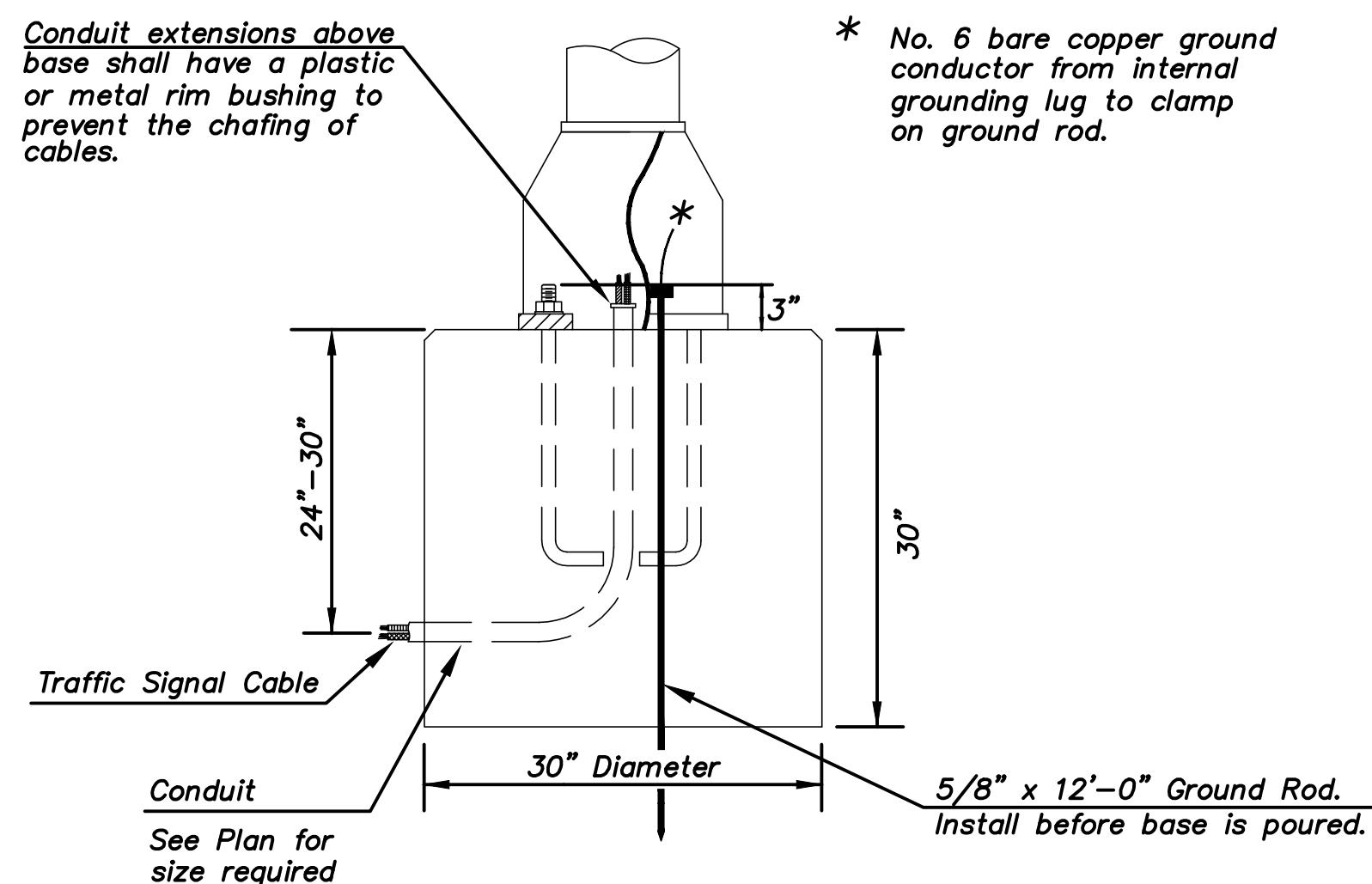
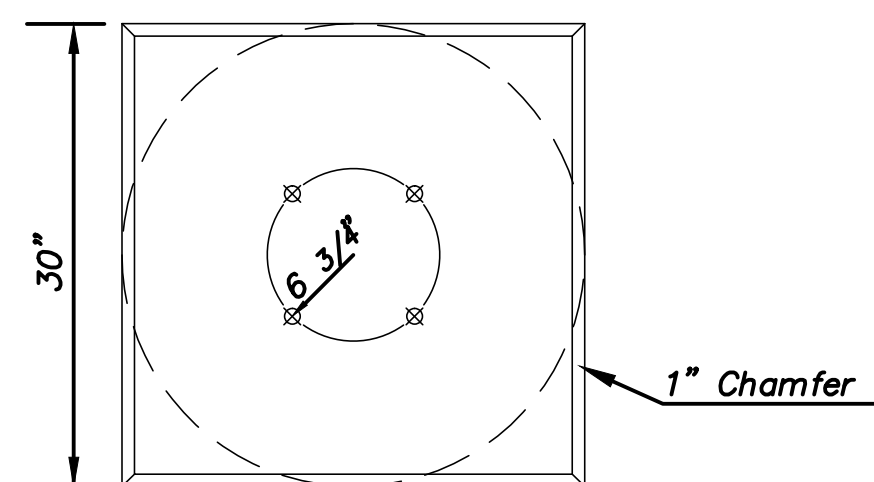


Use Keystone "No-Weld Number 1 Anti-Seize Compound" on all bolts & nuts.

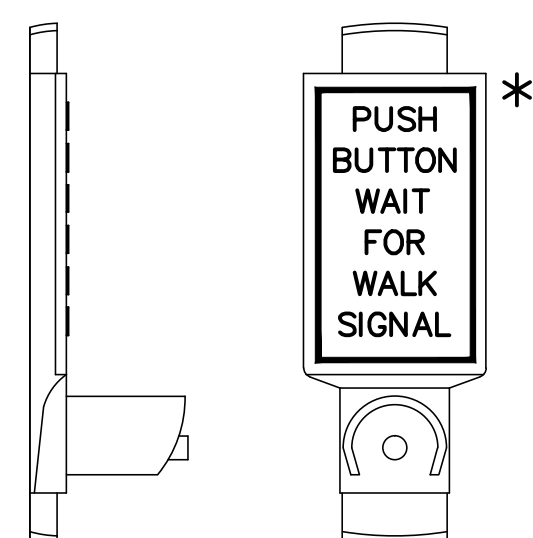


**ANCHOR BOLT  
DETAIL**



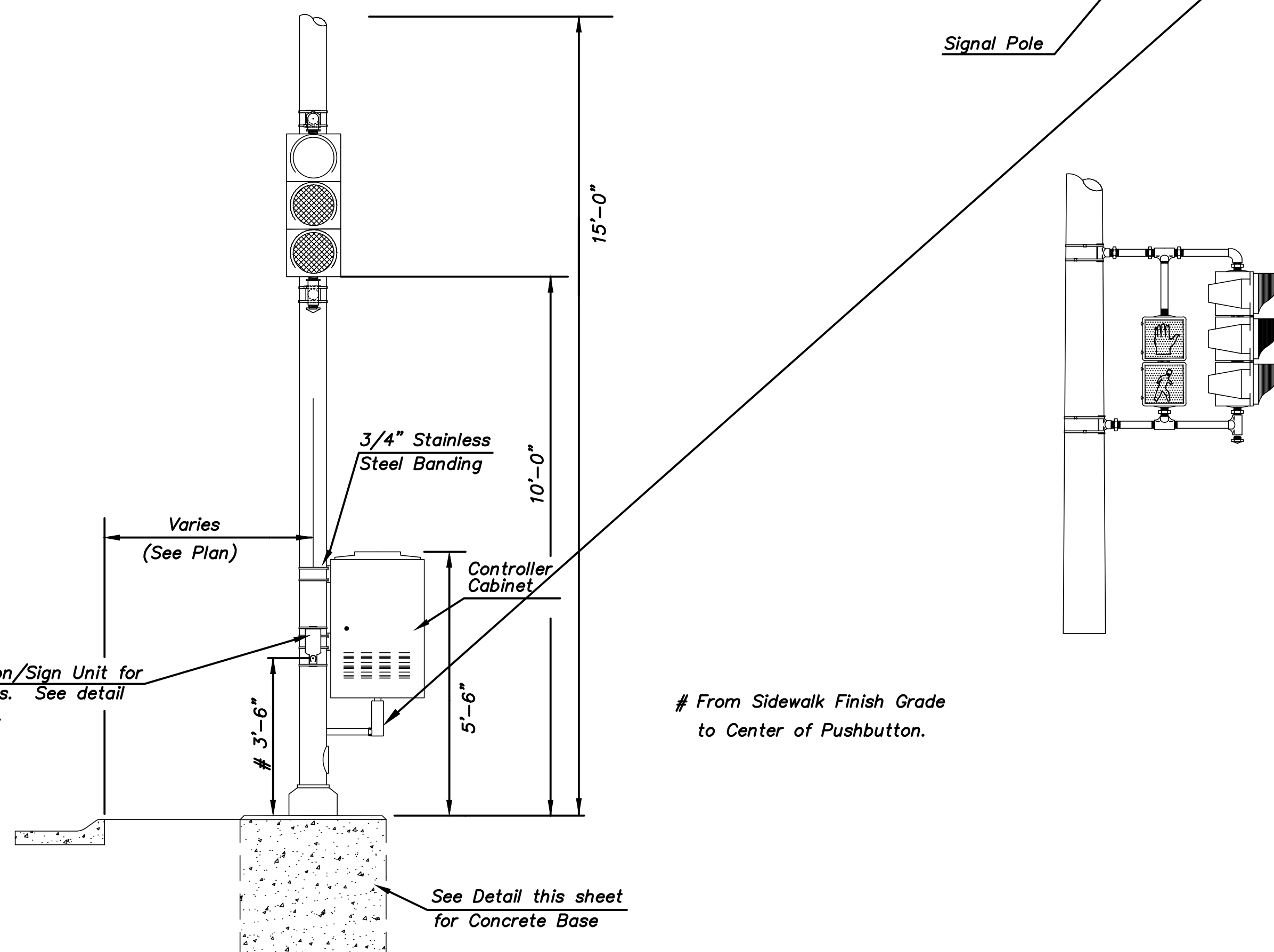
**CONCRETE BASE DETAIL**

\* NOTE: MESSAGE TO BE CAST WITH HOUSING (ONE PIECE)



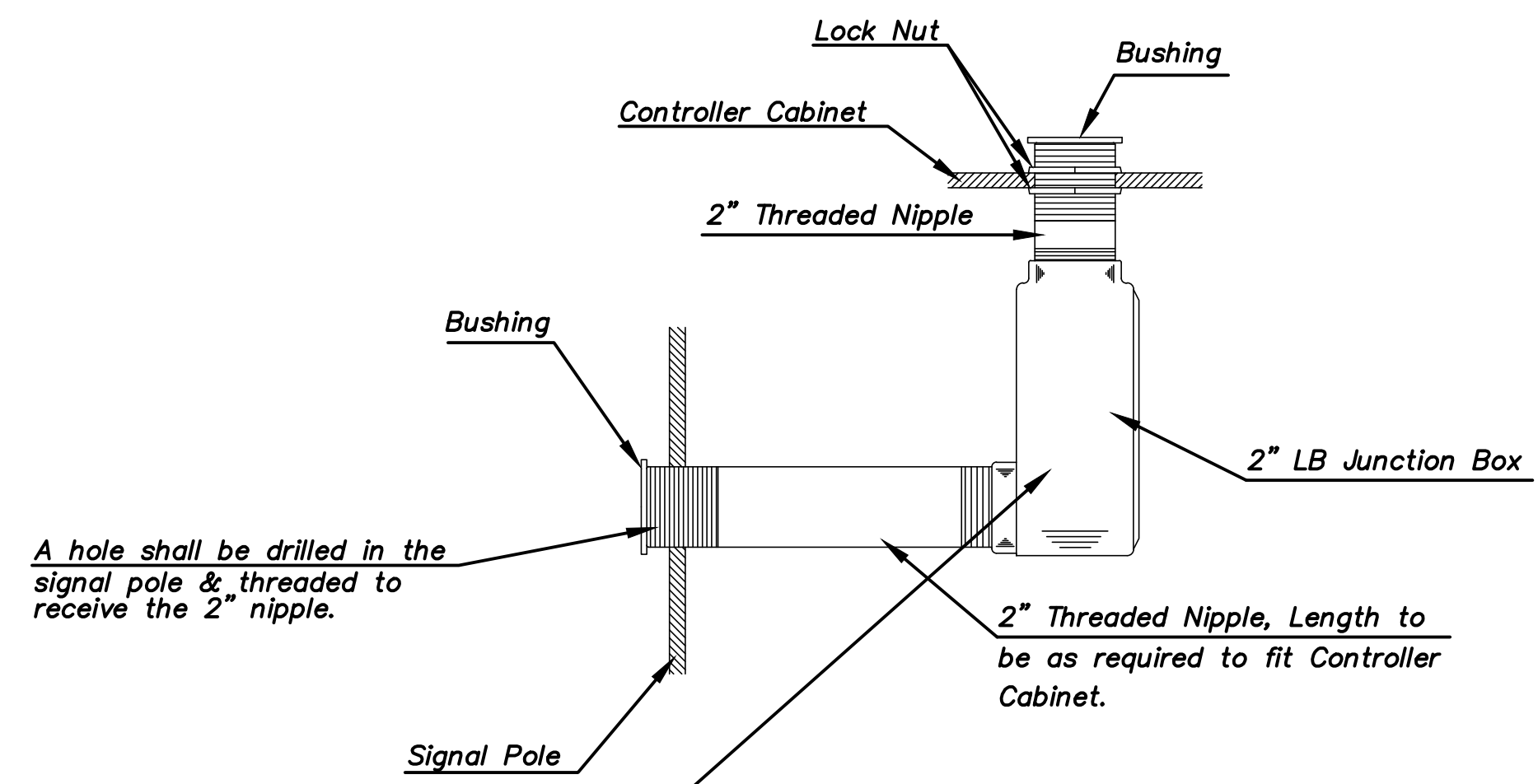
INSTALL PEDESTRIAN PUSHBUTTON UNDERNEATH CORRESPONDING PEDESTRIAN SIGNAL HEAD ON SIDE OF POLE NEAREST CROSSWALK. UNIT SHALL BE FIRMLY ATTACHED TO THE SIDE OF POLE WITH 3/4" STEEL BANDS. SHARP ENDS SHALL BE FOLDED UNDER TO PREVENT INJURY TO PEDESTRIANS.

**PEDESTRIAN PUSHBUTTON/SIGN  
UNIT DETAIL**



**TRAFFIC SIGNAL PEDESTAL**

# From Sidewalk Finish Grade to Center of Pushbutton.



PROJECT DESCRIPTION		
TRAFFIC SIGNAL PEDESTAL & CONCRETE BASE DETAIL SHEET		
PROJECT NUMBER		
DRAWN BY: T.M.	SCALE: NO SCALE	REVISED BY: L.R.B.
DATE: MAY 97		DATE: MAY 2004
CITY OF WICHITA DEPARTMENT OF PUBLIC WORKS		
ENGINEERING DIVISION PAUL GUNZELMAN, TRAFFIC ENGINEER		SHEET OF

No.	Date	By	Approved	Revision
CENTRAL AVENUE ROCK ROAD TO WEBB ROAD TRAFFIC SIGNAL PEDESTAL & CONCRETE BASE CITY OF WICHITA, KANSAS JAMES L. ARMOUR, P.E. - CITY ENGINEER				
POE & ASSOCIATES, INC. CONSULTING ENGINEERS 5940 E. Central, Suite 200 • Wichita, KS 67208-4242 Phone 316/685-4114 • FAX 316/685-4444				
ENGINEER: P. FERGUSON DESIGNER: P. FERGUSON/M. TUCKER P.O. Job No.: 1972 DATE: MARCH 2011				