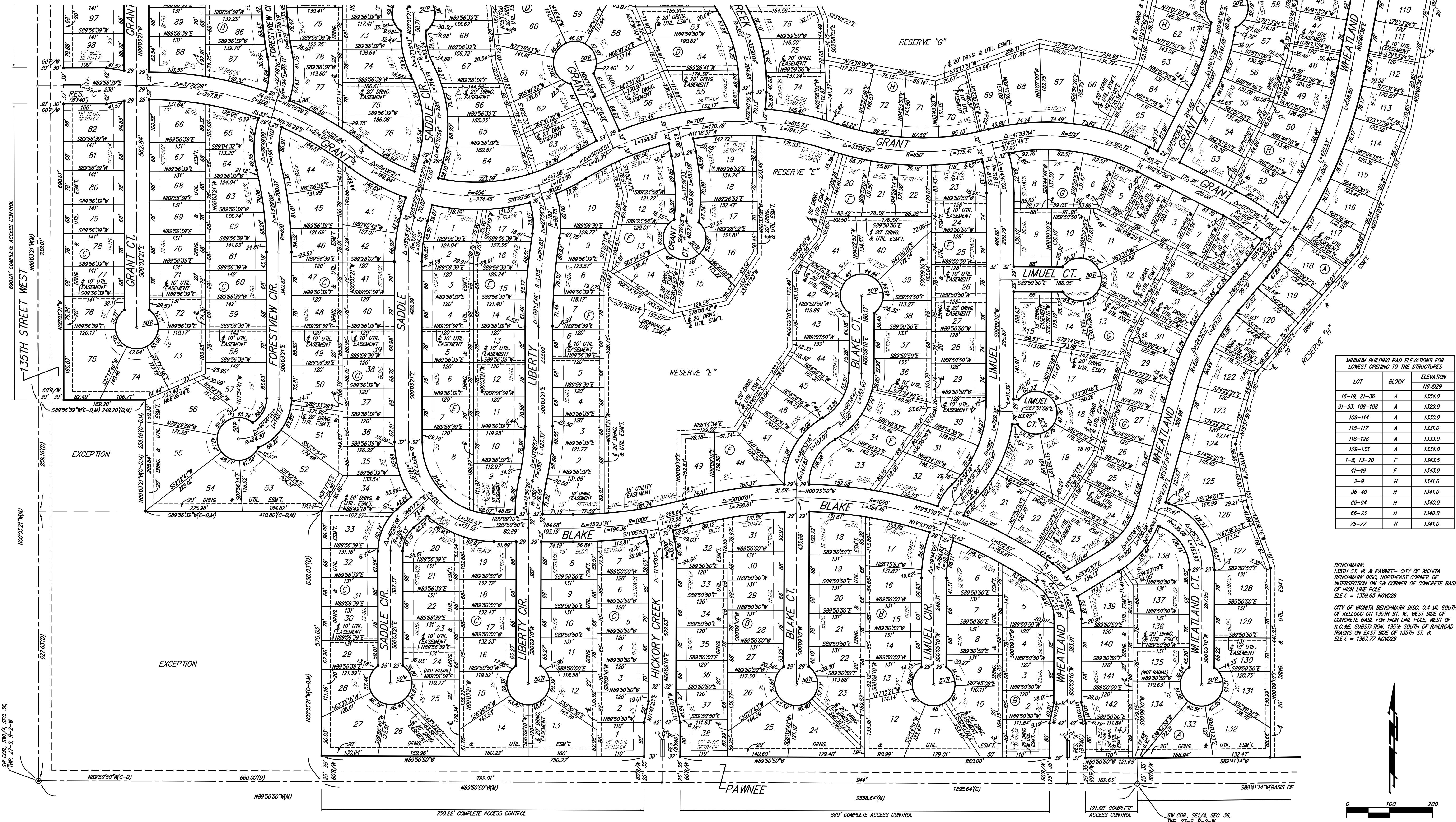


TURKEY CREEK 3RD ADDITION

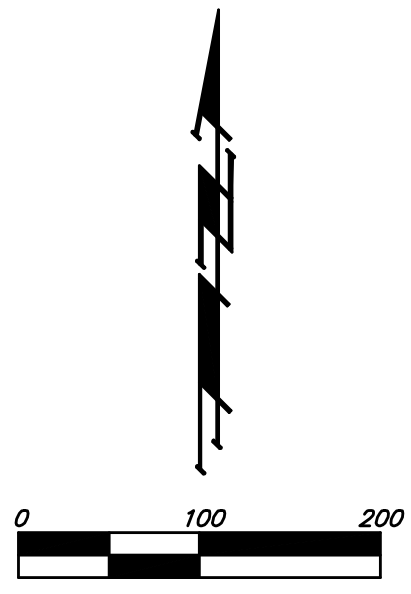
WICHITA, SEDGWICK COUNTY, KANSAS



LOT	BLOCK	ELEVATION
16-19, 21-36	A	1329.0
91-93, 106-108	A	1329.0
109-114	A	1330.0
115-117	A	1331.0
118-128	A	1333.0
129-133	A	1334.0
1-8, 13-20	F	1343.5
41-49	F	1343.0
2-9	H	1341.0
36-40	H	1341.0
60-64	H	1340.0
66-73	H	1340.0
75-77	H	1341.0

BENCHMARK:
135TH ST. W. & PANNÉE - CITY OF WICHITA
BENCHMARK DISC. NORTHEAST CORNER OF
INTERSECTION ON SW CORNER OF CONCRETE BASE
OF HIGH LINE POLE.
ELEV. = 1358.65 NVD29

CITY OF WICHITA BENCHMARK DISC. 0.4 MI. SOUTH
OF KELLOGG ON 135TH ST. W. WEST SIDE OF
CONCRETE BASE FOR HIGH LINE POLE, WEST OF
K.G.B.E. SUBSTATION, 135± SOUTH OF RAILROAD
TRACKS ON EAST SIDE OF 135TH ST. W.
ELEV. = 1367.77 NVD29



NOTE:
A master grading plan for drainage has been developed for this subdivision
and is on file with the City of Wichita, Kansas. All drainage easements,
right-of-ways, or reserves shall remain at established grades or as
modified with the approval of the City Engineer of the City of Wichita,
Kansas. No obstructions which impede the flow of this drainage system
shall be allowed.

- (M) = MEASURED
- (D) = DESCRIBED
- (P) = PLATTED
- (C) = CALCULATED
- (C-D) = CALCULATED PER DESCRIBED INFO.
- (C-P) = CALCULATED PER PLATTED INFO.
- ⊙ = #4 REBAR W/ "BAUGHMAN" CAP (SET)
- ⊚ = BOLT OVER STONE (FOUND)
- ⊚ = 1/2" IRON IN THIMBLE (FOUND)
- ⊚ = 1" IRON IN THIMBLE (FOUND)
- ⊚ = #5 REBAR IN THIMBLE (FOUND)
- ⊚ = 3/4" SQUARE PIN OVER STONE (FOUND)
- ⊚ = 3/4" IRON (FOUND)
- ⊚ = 1/2" IRON (FOUND)