

STATE	PROJECT NO.	YEAR	SHEET NO.	TOTAL SHEETS
KANSAS				

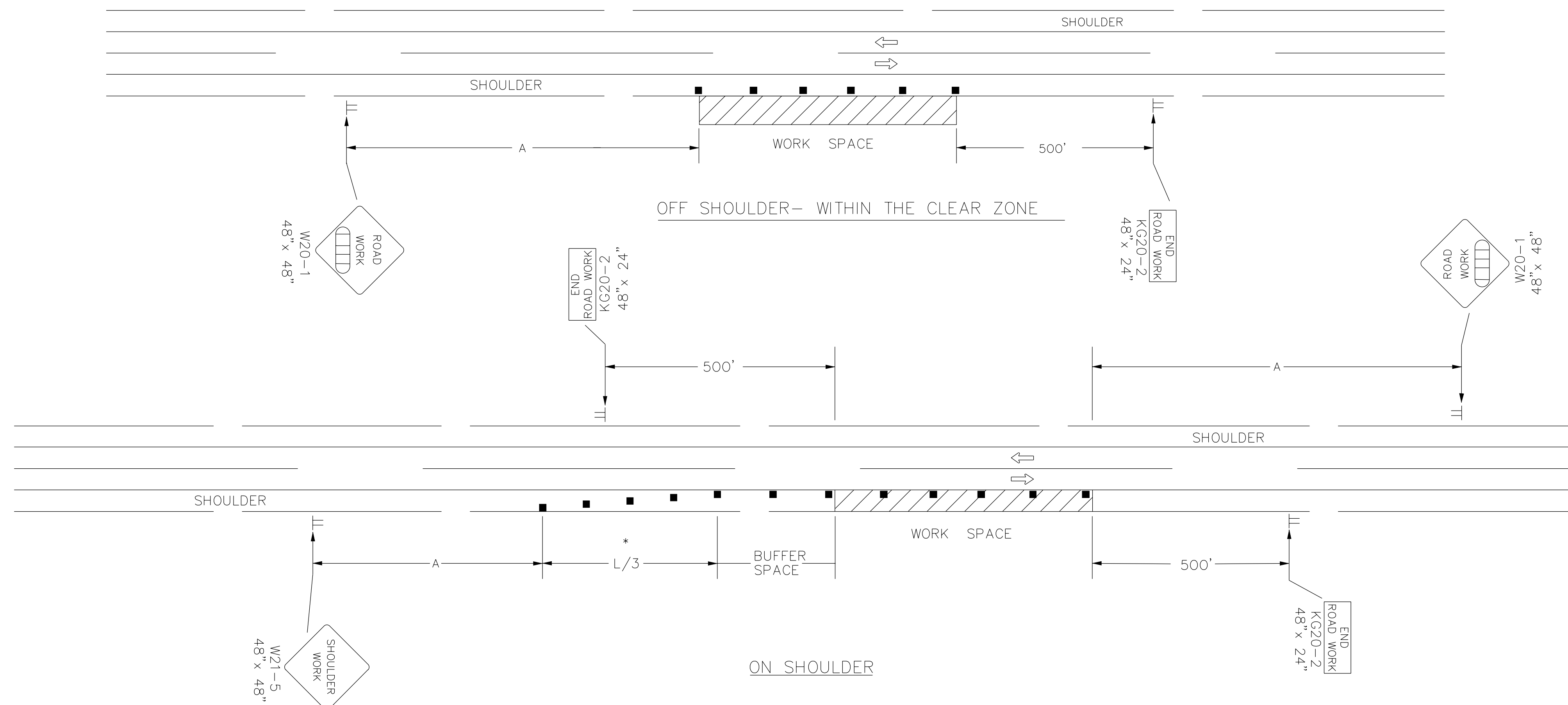
DATE	APPR
DESCRIPTION	MARK

REFER TO STD. TE710 FOR ADDITIONAL INFORMATION ON TEMPORARY TRAFFIC CONTROL SIGNS AND SIGN SPACING.  
REFER TO STD. TE702 FOR INFORMATION ON TAPERS AND CHANNELIZING DEVICES.  
REFER TO STD. TE700 FOR LENGTH OF BUFFER SPACE.

NOTE:

NO TRAFFIC CONTROL IS REQUIRED IF THE WORK SPACE IS LOCATED OUTSIDE OF THE CLEAR ZONE.

FOR OPERATIONS OF 60 MINUTES OR LESS, ALL SIGNS AND CHANNELIZING DEVICES MAY BE ELIMINATED IF A VEHICLE WITH HIGH-INTENSITY ROTATING, FLASHING, OSCILLATING, OR STROBE LIGHTS IS USED.



WHEN CONCRETE BARRIER SYSTEM IS USED, PORTABLE CHANNELIZING DEVICES ARE NOT NEEDED ALONG THE TANGENT BARRIER SECTION. DELINEATION ON THE BARRIER SYSTEM IS STILL REQUIRED. SEE RD622.

\* OMIT TAPER IF PAVED SHOULDER IS LESS THAN 8' WIDE.

■ Channelizing Device  
□□□□ AHEAD, 1500 FT, OR 1 MILE

NO.	DATE	REVISIONS	BY	APP'D
3	8-8-07	G20-2 CHANGED TO KG20-2	M.B.	A.A.A.
2	12-29-05	UPDATED END ROAD WORK SIGN DESIGNATION	M.B.	A.A.A.
1	11-19-03	CHANGED BORDER	B.H.	S.A.B.

DESIGNED BY: Larry Sample, PE				DATE: 5-20-2011
DWN BY: RES	CKD BY: LBK	APP BY: L. SAMPLE		
FILE NAME: 42_TRAFFIC CONTROL DETAILS AND NOTES.dgn				
AMEC PROJ. NO. 5-6150-0001				
TRAFFIC CONTROL DETAILS AND NOTES				
TC-7.04				
SHEET 42 OF 42				

**amec**  
AMEC Earth & Environmental, Inc.  
1129 SW Wensmaker  
Topeka, Kansas 66604  
Phone: (785) 272-6830  
Fax: (785) 272-6878



SYSTEMWIDE VEGETATION MAINTENANCE - PHASE 3  
WICHITA-VALLEY CENTER LOCAL  
FLOOD PROTECTION PROJECT  
WICHITA, KANSAS

PREPARED FOR  
THE CITY OF WICHITA, KANSAS  
465 N. Main  
Wichita, KS 67202



KANSAS DEPARTMENT OF TRANSPORTATION  
TYPICAL TRAFFIC CONTROL  
WORK ON OR NEAR THE SHOULDER  
UNDIVIDED HIGHWAY (2 OR 4 LANE)  
TE720 9/1/00