

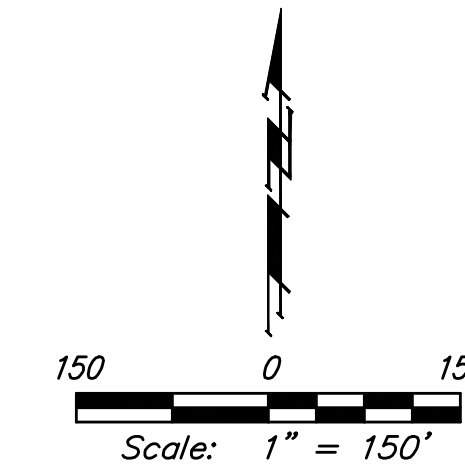
Lateral 13, Main 4, Northwest Interceptor Sewer
SANITARY SEWER IMPROVEMENTS
 to serve

SILVERTON ADDITION - PHASE IV
 CITY OF WICHITA, KANSAS

James L. Armour, P.E. City Engineer

Project Number
 468-84246
 O.C.A. Number
 744314

Nowak Construction - Contractor
 J. Terhune - City of Wichita, Field Project Engineer
 M. Sholander - City of Wichita, Inspector
 Stub and Risers
 As-built
 Release Date: 6/25/2011
 pdf: APRosas 7/19/2011



Sheet Index

Title Sheet	1
Line 1	2
Line 2 & Cleanouts 1 & 2	3
Line 4	4
Standard Manhole Detail	5
Ring & Cover Detail	6
8" Cleanout Riser Detail	7
Vertical Riser Detail	8
Erosion Control/Esmt. Grading Plan	9
Erosion Control Details	10-13
Coordinate Sheet	14-15
Copy of Plat	16-17

GENERAL NOTES:

- Contractor will be required to provide notice to utility companies a minimum of forty-eight (48) hours prior to any excavation, as follows:

Kansas One-Call	687-2470
-----------------	----------

The Contractor must notify the following in case of an emergency:

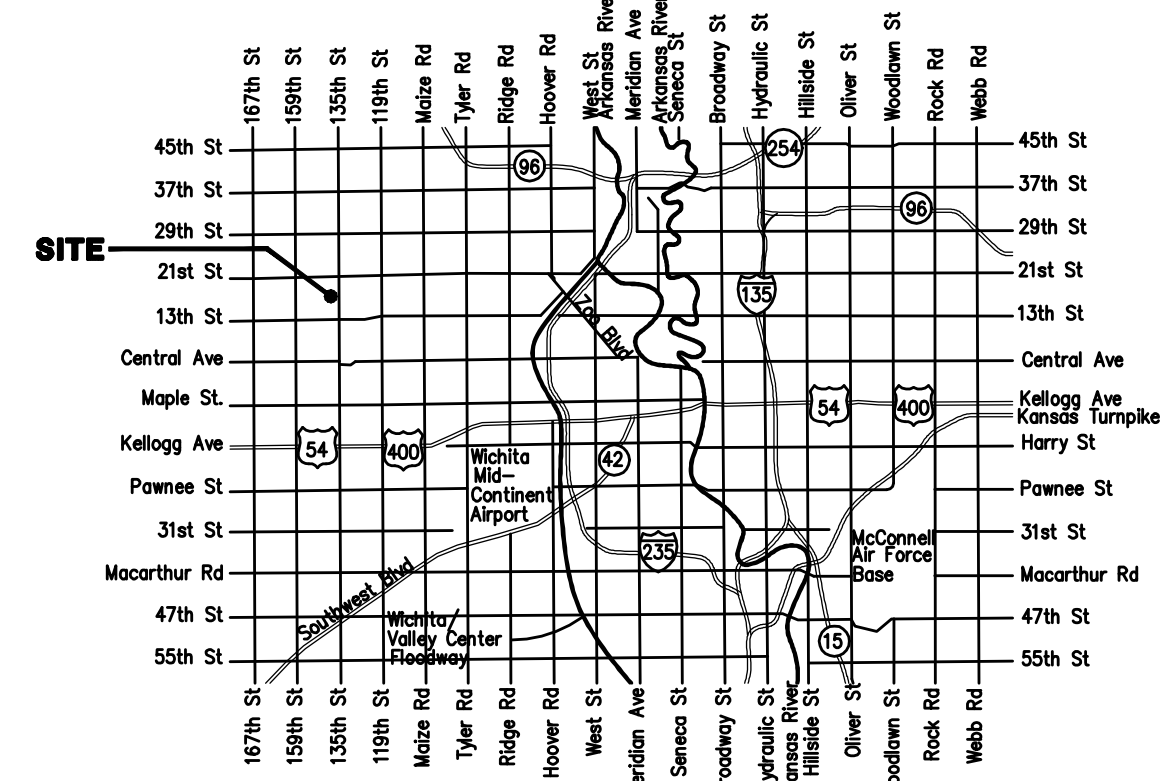
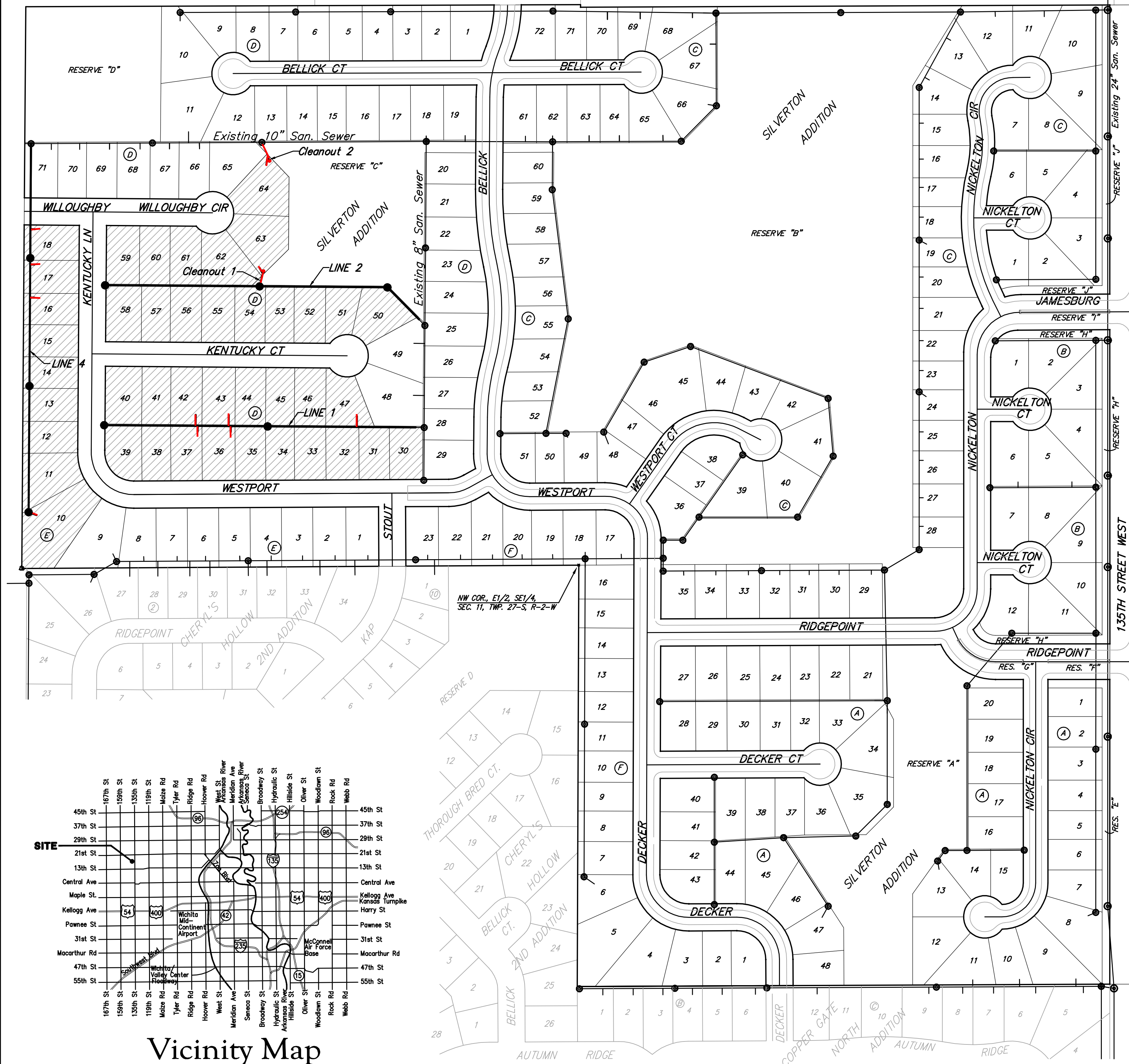
Cox Communications	262-4270
Kansas Gas Service	1-888-482-4950
Westar Energy	383-8650
Aquila Energy	1-800-303-0357
SBC	268-2245
City of Wichita Water Dept.	268-4563
City of Wichita Sewer Maint.	268-4024
City of Wichita Storm Sewer Maint.	268-4090
Conoco Phillips Pipeline Co.	268-4034
Southern Star Pipeline Co.	1-877-267-2290
Kinder-Morgan Pipeline Co.	529-6600
	1-888-844-5658
- All existing and proposed erosion control measures including silt fencing, erosion control mat, straw bales, inlet barriers, and const. entrance shall be maintained throughout construction by the contractor and until project is accepted by the City of Wichita. The on-site engineer shall complete weekly reports on the status of erosion control measures. The contractor shall be required to comply with maintenance and/or replacement of erosion control measures as determined by the on-site engineer until project is accepted by City of Wichita.
- The Contractor shall be responsible for maintaining continuous flow of sewage through construction. Contractor's proposed method for maintaining sewage flow shall be approved by the Engineer. Cost of maintaining flow of sewage through construction will not be paid for directly and this cost shall be considered as subsidiary to the other pay items of work.
- All areas disturbed during construction shall be seeded at 300 lbs./acre with Rye Grass immediately following construction in that area. Contractor shall prepare ground per City of Wichita Specifications. All costs associated with seeding shall be included in bid item "Project Seeding".
- Contractor of this project shall coordinate construction with Contractor of the Storm Water Drain project to facilitate construction of both projects.
- Excess excavation shall remain on site and be spread evenly on lots outside of easements and R/W's.
- Easements which have been previously graded by the Storm Water Drain Contractor shall be restored to proposed grade as indicated on the profile following San. Sewer installation.
- The developer for this project is Paul E. Kelsey and may be reached at (316) 722-1077.

Benchmarks

135th St. W. & 13th St. N.
 City of Wichita Disc at southwest corner of intersection, 30.00'± S. of C of 13th St. N. 35.00'± W. of C of 135th St. W.
 Elev. = 1355.65 MSL (NGVD 29)

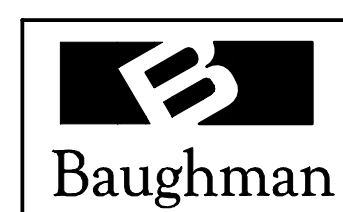
"□" Cut in top of curb north side of Westport adjacent to the southeast corner of Lot 30, Block D, Silverton Addition.
 Elev. = 1364.44 MSL (NGVD 29)

"□" Cut in curb inlet top at the west end of Bellick Ct. adjacent to Lot 10 & Lot 11, Block D, Silverton Addition.
 Elev. = 1364.12 MSL (NGVD 29)



Vicinity Map

Benefit District



Baughman Company, P.A. 315 Ella St. Wichita, KS 67211 P 316-262-7271 F 316-262-0145
 ENGINEERING | SURVEYING | PLANNING | LANDSCAPE ARCHITECTURE